

SEMICONDUCTORS

Allegro	Cypress	Intersil	Micro-Semi*	Rectron*	Sipex
Altera	Dallas	IR	NEC	Renesas	Skyworks
AMD / Spansion	Diodes Inc	IXYS	NJR*	REM	ST Micro
Analog Devices	Diotec*	KEC *	NSC	Rohm	Taiwan Semi*
Anpec*	EIC*	Lattice	NXP	Sanyo	TI
ASIX*	Fairchild	Linear Tech	On Semi	Semikron*	Toshiba
Atmel	Freescale	Marvell	Panjit*	Semtech	Vishay
CEL	FTDI*	Maxim*	Pericom	Shindengen*	Winbond
Chang Dian*	Hitachi	MCC*	PotatoSemi*	Silicon Link*	Xicor
Cirrus	IDT	Micrel	PI (Power Intergrations)*	Secos Semi*	Xilinx
Connexant	Infineon	Microchip	Realtek	Simcom	Zilog

OPTO ELECTRONICS

Adiva*	Dialight	Isocom*	Lite On	Para Light*
Avago	Everlight	Kingbright*	Lumex	Rohm
Chicago Miniature	Fairchild	LedTronics*	Optek*	Seoul Semi
Cree	Halo	Ligitek*	Osram	Stanley*

MEMORY PRODUCTS

Elpida	Infineon	ISSI	Numonyx	Sharp	TI
Hynix	Intel	Micron	Samsung	SST	

AC/DC CONVERTERS

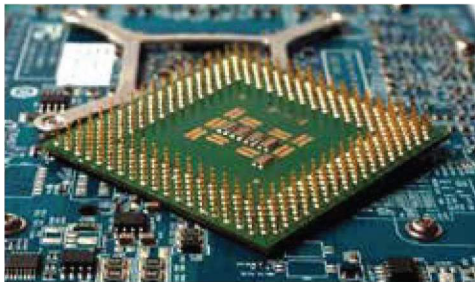
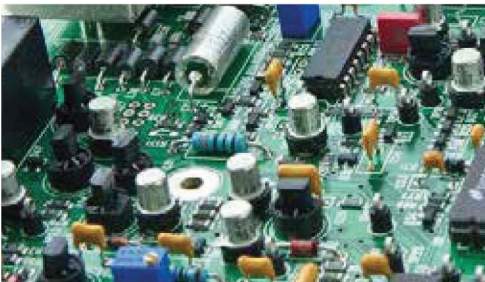
Astrodyne*	CUI*	Emerson	Recom	Shindengen*	Tamura*
------------	------	---------	-------	-------------	---------

SURGE ARRESTERS & VARISTORS

Bourns	Epcos	Iskra*	Sankosha*	World Products	Maida*
--------	-------	--------	-----------	----------------	--------

LCD PANELS MONITORS

NEC	Sharp
-----	-------



PASSIVE COMPONENTS

TRANSFORMERS

Elpida	Midcom	Pulse *	Tamura*	Würth Elektronik*	Tyco
Numonyx	Premo*	Sumida*	Triad-Magnetics	ETAL *	

CRYSTAL & OSCILLATORS

Abracon*	Citizen	Ecliptek	Fox Electronic*	HK Crystals*	River Electronics*
Adiva*	CQ Crystal*	ECS	Fronter Crystal*	NDK	Seiko Instrument
BeckElec*	Daishinku / KDS	Epson	Golledge*	Raltron	TEW*

FUSES

AEM*	Cooper Bussman	Fuzetec*	Littelfuse	Schurter
Bell Fuse	Ferraz Shawmut	Hollyland*	San-O	Sleek*

CAPACITORS

ASC Capacitors*	Cera-Mite*	Faratronic*	Koa*	Nichicon	Taiyo Yuden
Arcotronics*	CDE*	Fenghua*	Maida*	Novacap*	TDK
AVX	ECI*	Ge / Genteq*	Meritek*	Panasonic	United Chemi-Con
BC Components	Elna	Illinois Capacitor*	Murata*	RG Allen*	Vishay/Vitramon
Cal-Chip*	Epcos	Johanson*	Nemco*	Rubycon	Walsin/Kamaya*
Capax*	Evox-Rifa	Kemet	NIC Components	Stelco*	Wima*

RESISTORS

Alps	CTS	IBS Resistors*	Ohmite*	SEI*	Xicon*
Arcol	Dale / Vishay	IRC*	RCD*	Vishay Foil*	Yageo*
ASJ*	Fenghua*	KOA	RG Allen*	Vitrohm*	
BI Technologies	Hi-Tech Resistors*	Meritek*	Rohm*	Welwyn*	
Bourns	Honeywell	Micron*	Royal Ohm*	Walsin/Kamaya*	

RF COMPONENT & INDUCTORS

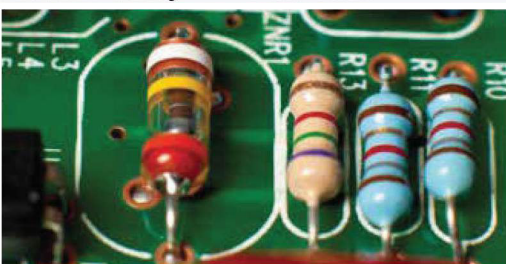
Adiva*	Coiltronics	Gowanda	Murata*	Tai-Tech*	Vitech
AEM*	Coil Master*	IBS Inductors*	Premo*	TDK	Walsin*
Cal-chip*	Dale / Vishay*	JW-Miller*	Protek	Toko	Würth Elektronik*
Central Tech	Etal/Profec*	Laird Tech *	Skyworks	Tokin	Yageo*
Coilcraft*	Fastron (Stetco)*	Mag Layers*	Sumida*	Triad-Magnetics	

THERMISTOR & THERMOSTAT

Ametherm*	Asahi *	Epcos	Honeywell	Microtherm	Selco*
Ampron*	Betathem*	GE-Sensing	Maida*	RTI*	Quality Thermistor*

BATTERIES

EEMB Battery*	Panasonic	Power Kingdom*	Rayovac	Renata*	Sanyo
---------------	-----------	----------------	---------	---------	-------



ELECTRO MECHANICAL COMPONENTS

SWITCHES

Alco Switch/Tyco	Arcoelectric	C&K / ITT	Comus*	E-Switch	
Alps	Amtek*	Canal*	Deca	Marquardt	
Apem*	Bourns	Cherry*	Diptronics*	Mini-Circuits	

HARDWARE

Abbatron*	Elpakco*	Kangyang*	Mountz*	RAF*	Southco*
Amatom*	H.H. Smith*	Keystone*	Mill-Max	Richco	SSS Helavia*
Avdel	Huffman	Mc Master*	Penn Engineering*	Schroff	Teknational*
Bivar*	ILSCO	Microplastic*	Piolax	Seastorm*	Zierick*

WIRE & TUBING

3M*	Cableco*	Icorally*	Manhattan/CDT*	Shenzhen Woer*	Sumitomo
Alpha	Carol	Kerrigan-Lewis*	Raychem	Showa Electric*	Wang Yip*
Belden	Dearborn*	Leoni*	Rubadue*	Sonic/Thermax*	Zeus*

CONNECTORS

2E*	Cui*	IBS*	Major League*	Shogyo*	Wago*
3M*	Cvilux	ITT-Cannon	Methode	Stewart	Weidmuller*
Almita*	Deutsch*	ITW-Pancon	Mill-Max/Preci-Dip	Stocko*	Wieland
Amphenol	Elco	JAE	Molex	Switcraft	Yamaichi
Amtek*	Elpakco*	JST	Neltron*	Taitek*	Yazaki*
American Denki	Erni	Junjia*	Neutrik	TE Connectivity	Yokowo*
Anytek*	FCI/Burndy*	Kycon	Oupiin*	Teka*	
AUK*	Harting*	L-Com*	Panduit*	Toby*	
Cinch	Heyco	Lemo	Pollman*	Tokyo Dip	
Comm-Con	Hirose	Lewden*	Samtec*	VOGT*	

CIRCUIT-BREAKERS RELAYS & DELAY LINE

Airpax/Sensata	Aromat/Panasonic	Coto*	Magnecraft*	Omron*	Sanyou*
ABB	AVX	Deltrol*	Meder*	P&B / Tyco	Schurter
American Zettler	Comus	Hager*	NEC	Phoenix	

THERMAL CONDUCTORS

Aavid thermalloy*	Coors Tek*	IERC / CTS	Wakefield
-------------------	------------	------------	-----------

OPTICAL FIBER CABLE

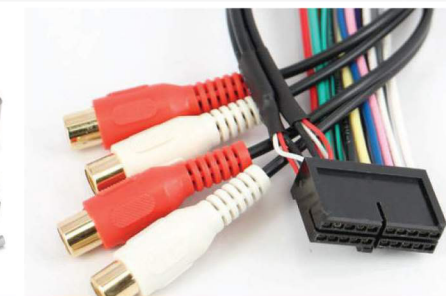
Showa Electric*	Tyco
-----------------	------

ELECTRICAL TAPES/INSULATIONS

3M*	Glastic Corp	Ginlian*	Mar-Bal	Nitto Denko*	Parmacel
-----	--------------	----------	---------	--------------	----------

FANS

Cooltron*	Comair / Rotron	EBM-Papst*	Gardtec	Sunon	U.S Toyo Fan*
-----------	-----------------	------------	---------	-------	---------------



MAGNETICS & FERRITE CORES AND BOBBINS

IBS Electronics Authorized*

AEM*	Fair-Rite*	Kashke GMBH	Mag-Inc	NEC-Tokin	TDK
Arnold Magnetics	Ferrocube	Kitagawa	Micro Metals	Sanco*	Toshiba*
Epcos	Honeywell	Laird Tech*	MMG/Neosid*	Tai-Tech*	

CHEMICAL PRODUCTS

IBS Electronics Authorized*

EPOXY, RESINS & PAINT

3M*	Emerson&Cumings*	GE	Lord*	Permabond
Cardinal*	Epoxy Set	Henkel*	Momentive*	Resin Tech*
Devcon	Epoxy Tech	ITW Polymers	Organic*	Super Glue
Dow Corning	Evobond*	Loctite*	Pacer Tech	

PRODUCTION EQUIPMENTS & SPARE PARTS

IBS Electronics Authorized*

Baldor Motors	Electrovert	Omega	Ultrasonic	Wahl	Weller
Duracool	Numatic				