

LEVINA

5377PIP125R05-22x45

EAN 4031582363081

Swivel castor with total lock, tail end of castor, housing and wheels made from high grade synthetic materials, double ball bearing swivel head, solid plug fitting. Wheel centre made of Polypropylene, Tread: solid rubber, grey non-marking, precision ball bearing
Hint: These castors are also with grey locking lever available.



BETTER MOBILITY. BETTER LIFE.



Picture may differ from original product

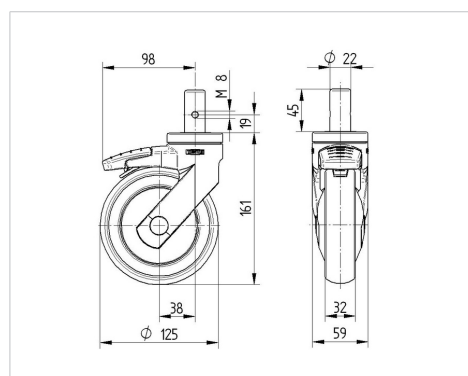
Technical Data

Wheel diameter	125 mm
Width of Tread	32 mm
Bolt-Ø	22 mm
Bolt length	45 mm
Offset	38 mm
Swivel Interference	201 mm
Overall height	161 mm
Temperature	- 10 / + 40 °C
Standard	EN 12530
Weight	0.721 kg
Swivel Radius	100.5 mm
Hardness of tread	Shore A 75
Load capacity	100 kg
Load capacity (static)	160 kg

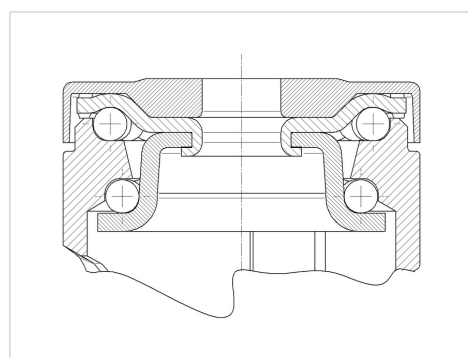
Advantages at a glance

Roll performance	● ● ● ○ ○
Movement noise	● ● ● ● ○
Attrition	● ● ● ○ ○
Corrosion resistance	● ● ● ● ○

Dimensions



Structure & Mounting



LEVINA

5377PIP125R05-22x45

EAN 4031582363081



BETTER MOBILITY. BETTER LIFE.

Structure & Mounting

