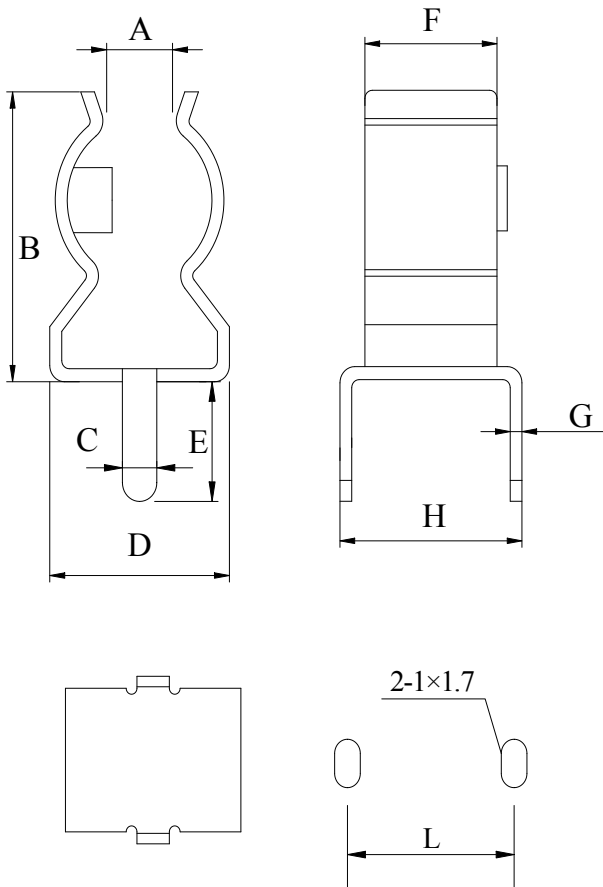


**Features**

The BC501 fuse clip is made of copper and nickel or tin plated surface. This clip shape is suited for use with the 5×20 fuse link series.

- Material: Copper H62, hard material
- Thickness: 0.35mm or 0.4mm
- Pb- and Halogen-free, RoHS compliant
- Smooth Surface
- Soldering temperature: 260±5°C
- Nickel plated models: BC501-035, BC501-035A, BC501-035B, BC501-040
- Tin plated models (bright): BC501-235 and BC501-240

**Dimensions**



Part No.	A (mm)	B (mm)	C (mm)	D (mm)	E (mm)
BC501-035	2.2±0.3	9.4±0.2	1.2±0.1	6.5±0.2	3.5±0.1
BC501-035A	2.3±0.3	9.5±0.2	1.2±0.1	6.5±0.2	3.5±0.1
BC501-035B	2.2±0.3	9.4±0.2	1.2±0.1	6.5±0.2	3.3±0.1
BC501-235	2.2±0.3	9.4±0.2	1.2±0.1	6.5±0.2	3.5±0.1
BC501-040	2.2±0.3	9.4±0.2	1.2±0.1	6.5±0.2	3.5±0.1
BC501-240	2.2±0.3	9.4±0.2	1.2±0.1	6.5±0.2	3.5±0.1

Part No.	F (mm)	G (mm)	H (mm)	L (mm)
BC501-035	4.8±0.1	0.35±0.03	5.5±0.2	5.15
BC501-035A	4.8±0.1	0.35±0.03	5.5±0.2	5.15
BC501-035B	4.8±0.1	0.35±0.03	5.9±0.2	5.55
BC501-235	4.8±0.1	0.35±0.03	5.5±0.2	5.15
BC501-040	4.8±0.1	0.4±0.03	5.5±0.2	5.1
BC501-240	4.8±0.1	0.4±0.03	5.5±0.2	5.1

**Ordering Information**

Series	Part No.	Packaging Code	Qty
BC501			