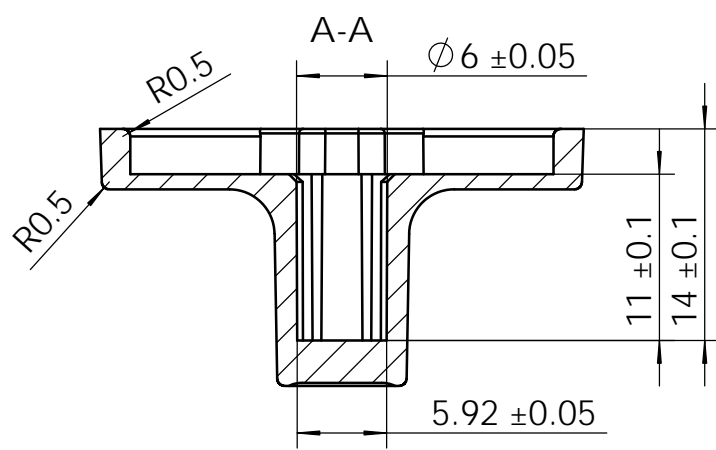
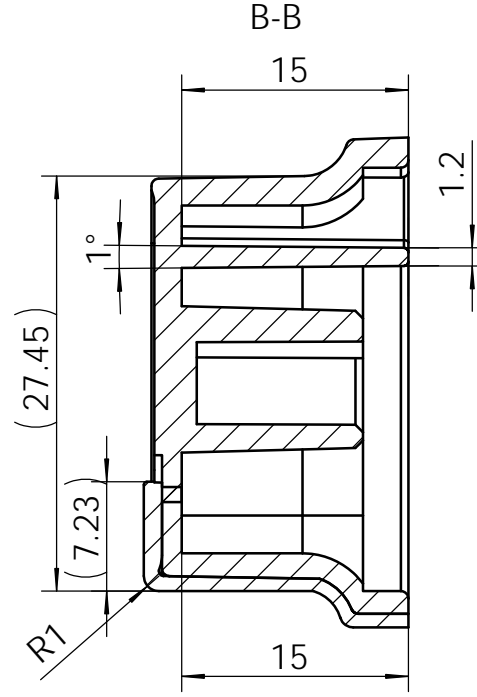
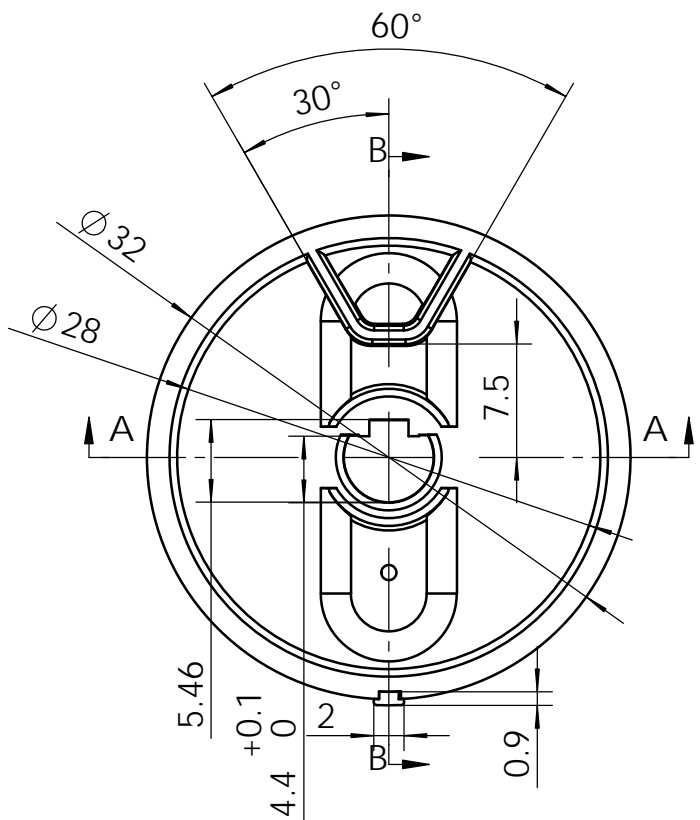
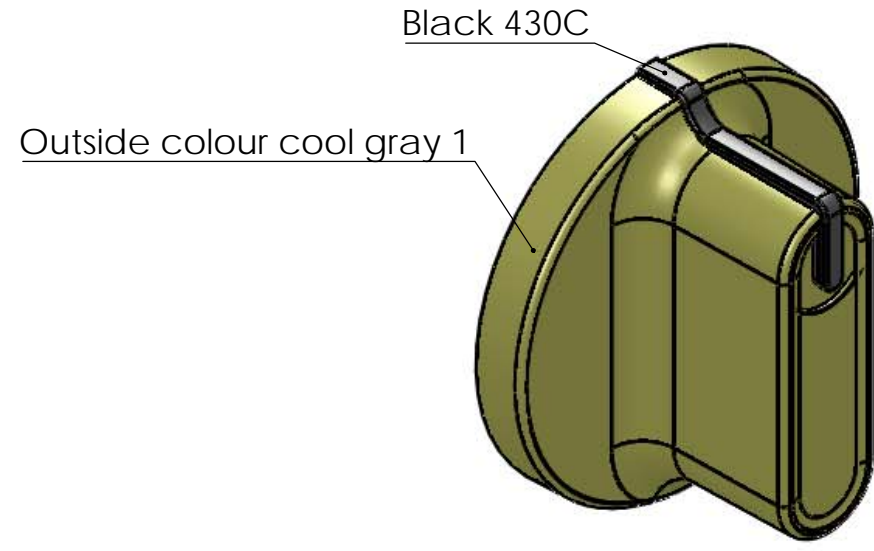
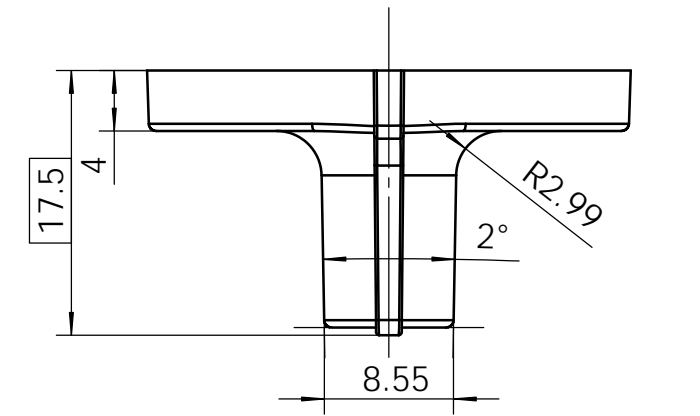


REVISIONS						
REV	DESCRIPTION	DRN	CHECKED	APPR	DATE	ECR#
02	Add a block rib	Sammy.sun	Andy.Wu	Panfeng	2016.01.27	G20160104605



Notes:

- MATERIAL: ABS (Chimei PA-757)
- REFERENCE DOCUMENTS:  
UL QMMY2 FABRICATED PLASTIC PARTS  
UL 94 TEST FOR FLAMMABILITY OF PLASTIC MATERIAL PARTS IN DEVICES AND APPLIANCES  
UL 746D STANDARD FOR POLYMERIC MATERIALS; FABRICATED PARTS  
ISO 11469 GENERIC IDENTIFICATION AND MARKING OF PLASTICS PRODUCTS  
ASME Y14.5M-1994 DIMENSIONING AND TOLERANCING
- THE MATERIALS AND MANUFACTURING PROCESSES USED FOR THIS PART OR ASSEMBLY MUST COMPLY WITH TFS ENVIRONMENTAL SPECIFICATION 267-185800.
- THIS DRAWING TO BE USED IN CONJUNCTION WITH 3D DATABASE TO MANUFACTURE AND INSPECT THE FABRICATED PART. ALL FEATURES NOT DIMENSIONED SHALL CONFORM TO 3D DATABASE. IN CASE OF CONFLICT BETWEEN 3D DATA AND DIMENSIONS ON THIS DRAWING, THE DIMENSION TAKE PRECEDENCE.
- UNLESS OTHERWISE SPECIFIED, SHOWN DIMENSIONS SHALL CONFORM TO TOLERANCE DEFINITION TABLE 1.0. ALL DIMENSIONS NOT SHOWN SHALL CONFORM TO THE SINGLE PLACE DECIMAL TOLERANCES IN TABLE 1.0.

TABLE 1.0 DEFAULT TOLERANCES  
DIMENSION RANGE TOLERANCE  
FOR PLASTIC One place decimals:X.X Two place decimals:X.XX

< 23.99	±0.2	±0.10
24.00 to 149.99	±0.3	±0.13
150.00 to 199.99	±0.5	±0.18
200.00 to 299.99	±0.5	±0.28
300.00 to 399.99	±0.8	±0.38
>400.00	±1.0	±0.50

ANGULAR ±1.0 DEGREE ±1.0 DEGREE

- ALL DRAFT ANGLES ARE PER THE 3D CAD MODEL. ALL DRAFT ANGLES LESS THAN 1 DEGREE UNLESS OTHERWISE SPECIFIED AND PER THERMO FISHER ENGINEERING APPROVAL
- FLASH NOT TO EXCEED 0.1mm.
- GATE LOCATION PER THERMO FISHER ENGINEERING APPROVAL GATE VESTIGE NOT TO EXCEED 0.13mm UNLESS OTHERWISE SPECIFIED.
- PARTING LINE MISMATCH NOT TO EXCEED 0.10mm

<b>Unless Otherwise Specified</b> 1.Linear Dimension Unit: mm 2.Tolerance: Linear&Angular: ISO 2768-1 m 3. General Requirement: Remove all burrs and Sharp Edges	Material: ABS		Title CIMAREC KNOB		
	Signature	Date	Dwg. No. CIC0000549		
	Drn. Felix, Tang	2014.07.20	Scale: 2:1	Size: A3	Sheet: 1/1
	Checked. Andy, Wu	2014.07.21	Ver. 01		
	Appr. William, Gu	2014.07.22	Rev. 02		

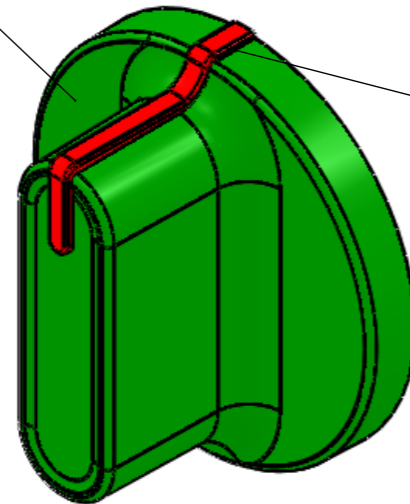
REVISIONS						
REV	DESCRIPTION	DRN	CHECKED	APPR	DATE	ECR#
02	Add a Black rib	Sammy.S	Andy.W	Panfeng.J		G20160104605

2.The color standard :

$\Delta I$ : 81.74

$\Delta a$ : -0.97

$\Delta b$ : 1.53



1.The color standard:

$\Delta I$ : 42.72

$\Delta a$ : -0.70

$\Delta b$ : -0.85

9. Plastic outer surface |<sup>2016.01.27</sup> ng specifications:  
ABS(Hard rubber):MT11010

10.Assembly hole depth of: 11 + / - 0.2 mm,  
Appearance of the draft Angle is 2.5 .

11.The hole diameter is 6 + / - 0.03.The hole for the  
draft Angle: 0.25 .

12.The final product appearance:double coloured  
plastic injection.

<b>Unless Otherwise Specified</b> 1.Linear Dimension Unit: mm 2.Tolerance: Linear&Angular: ISO 2768-1 m 3. General Requirement: Remove all burrs and Sharp Edges	Material: ABS		Title CIMAREC KNOB		
	Signature	Date	Dwg. No. CIC0000549		
	Drn. Felix,Tang	2014.12.08	Scale: 2:1	Size: A3	Sheet: 2/2
	Checked. Andy,WU	2014.12.08	Ver. 01		
	Appr. William,Gu	William,Gu	Rev. 02		