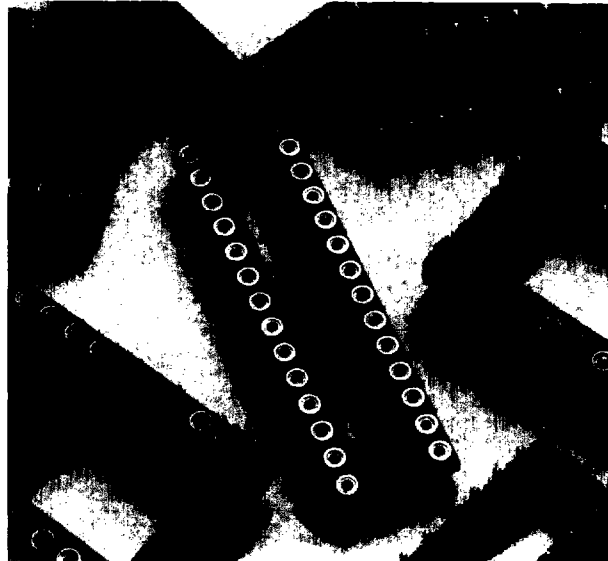


McKenzie Delivers Choices!!

- Largest selection of Contact Options
- Open or Closed frame
- Disposable Plastic Pin Carrier™ Option
- True Hi-Temp Options – IR and Vapor Phase compatible
- End-to-End and Side-to-Side stackable
- Wide variety of DIP Adaptors
- Precision Multi-Finger Hi-Rel Contacts
- No solder wicking or flux intrusion
- Integral DeCoupling Capacitors



Standard Insulator Materials

P/N	MATERIAL	DESCRIPTION	CONTINUOUS USE TEMP.
*	PBT	Glass Reinforced Polyester Thermoplastic, UL 94V-0	≤ 140°C

* Part number information specifying material is not necessary to select standard material

Hi-Temp alternatives suitable for IR and Vapor Phase soldering.

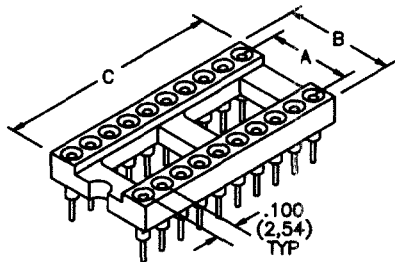
P/N	MATERIAL	DESCRIPTION	CONTINUOUS USE TEMP.
R	PPS	Glass Reinforced Polyphenylene Sulfide, UL 94V-0	≤220°C
F	FR4	Glass Reinforced Epoxy Laminate, UL 94V-0	≤140°C
H	Hi-3003	Glass Reinforced Polyimide Laminate, UL 94V-0	≤250°C



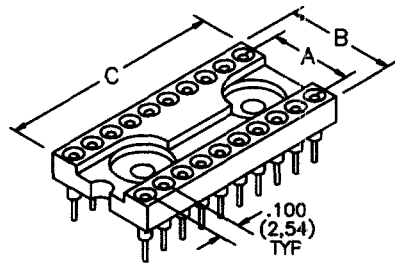
AVAILABLE

For complete material specifications see Section X.

Insulator Options



OPEN FRAME



CLOSED FRAME

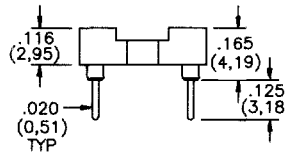
Insulators are
UL 94V-0 Rated
Thermoplastic



AVAILABLE

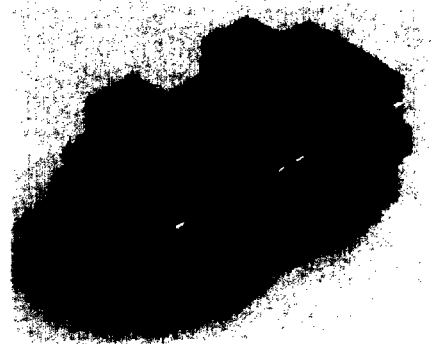
See page B1 for Hi-Temp Options

OUR MOST POPULAR CONTACT



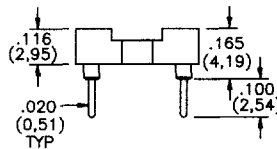
Specify	Contact/Shell
001B	30μ" Gold/200μ" Tin
002B	30μ" Gold/10μ" Gold
011B	10μ" Gold/200μ" Tin
014B	200μ" Tin/200μ" Tin
016B*	30μ" Gold/200μ" Tin
PTH =	.026 ± .003

*CLINCHABLE SOFT BRASS

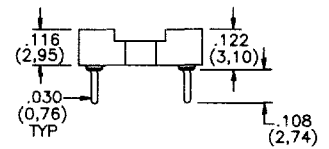


IC Retention DIP Clamps See Page B19

SHORTER SOLDER TAIL — NO TRIMMING

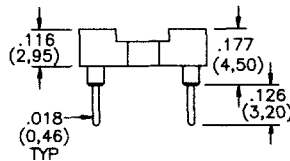


Specify	Contact/Shell
018B	200μ" Tin/200μ" Tin
PTH =	.026 ± .003

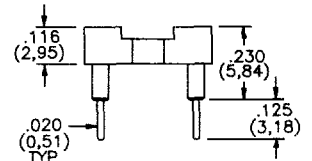


Specify	Contact/Shell
185B	30μ" Gold/200μ" Tin
PTH =	.036 ± .003

HIGHER PCB STANDOFF



Specify	Contact/Shell
248B	30μ" Gold/10μ" Gold
PTH =	.024 ± .003



Specify	Contact/Shell
040B	30μ" Gold/10μ" Gold
041B	30μ" Gold/200μ" Tin
PTH =	.026 ± .003

Contact/Shell:

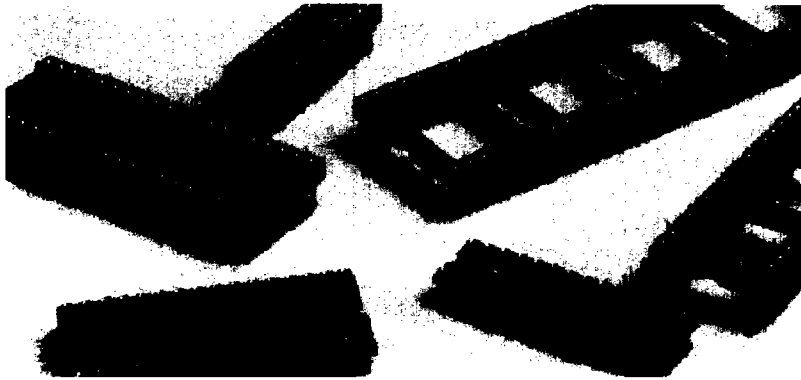
Inner Contact — Beryllium Copper
Outer Shell — 1/2 Hard Brass

Plating:

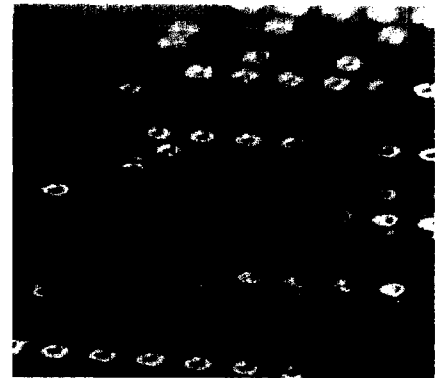
Outer Shell — Gold over 100μ" Nickel or Tin over 100μ" Nickel
Inner Contact — Gold over 50μ" Nickel or Tin over 100μ" Nickel

Other contact and plating styles available, see Section A or consult the factory

McKenzie Socket Division

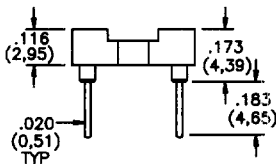


Open and Closed Frame DIP Sockets

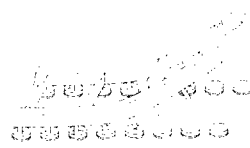


B

EXTRA LONG SOLDER TAILS



- Specify Contact/Shell**
- 091B** 30μ" Gold/10μ" Gold
 - 054B** 30μ" Gold/200μ" Tin
 - 057B** 200μ" Tin/200μ" Tin
- PTH = .026 ± .003**



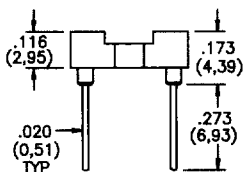
All contact styles are available in our Patented PPC™ Disposable Carrier System. Specify PPC in part number.

How To Order

PPC-DIP-320-011B-CF-R

For pins on a carrier strip begin the part number with "PPC" or "HPC" (option)*

Product Code	# of Contacts	Contact Style	Closed Frame (Option)	Hi-Temp Material Call Out (Option)**
Row-to-Row Spacing				



- Specify Contact/Shell**
- 067B** 30μ" Gold/200μ" Tin
 - 113B** 30μ" Gold/10μ" Gold
- PTH = .026 ± .003**

**Only add the "PPC" option to the front of the part number if a carrier system is required.*

***See page B1 for Material Call Outs. Open frame is standard and available for all sizes and row-to-row spacing. Closed frame available in sizes shaded in table below. Add "CF" to the end of the p/n.*

NO. OF CONTACTS	6	8	14	16	18	20	22	24	28	30	32	34	36	38	40	48	64	
A					.300 (7,62)					.400 (10,16)				.600 (15,24)			.900 (22,86)	
B					.400 (10,16)					.500 (12,70)				.700 (17,78)			1.000 (25,40)	
C	.300 (7,62)	.400 (10,16)	.700 (17,78)	.500 (12,70)	.900 (22,86)	1.000 (25,40)	1.100 (27,94)	1.200 (30,48)	1.400 (35,56)	1.000 (25,40)	1.100 (27,94)	1.200 (30,48)	1.200 (30,48)	1.400 (35,56)	1.600 (40,64)	2.000 (50,80)	2.400 (60,96)	3.200 (81,28)