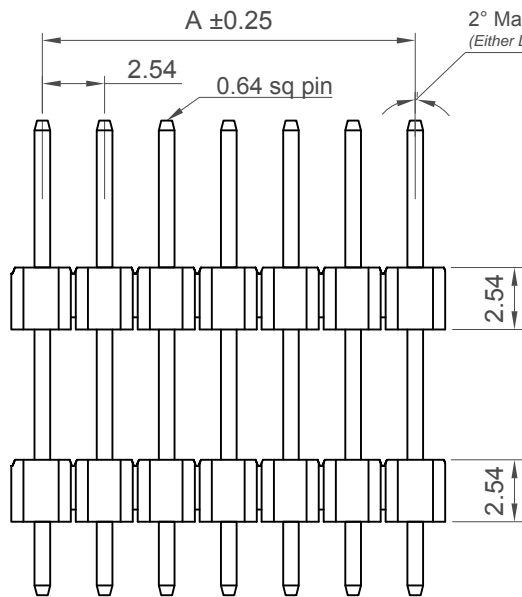
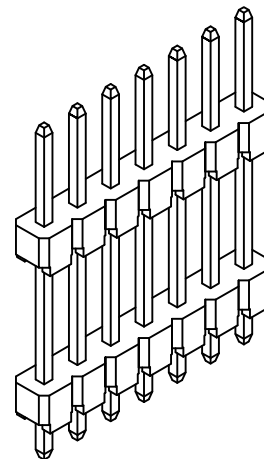
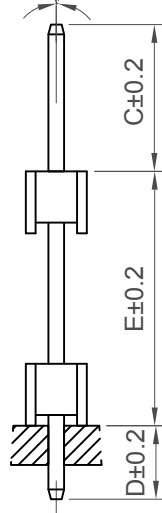


Recommended PCB Layout



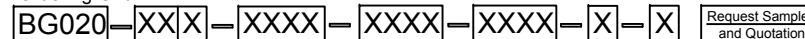
2° Max. Sway & Toe  
(Either Direction At The top)



Number of Contacts	Dimensions	
	A	B
2	2.54	5.08
3	5.08	7.62
4	7.62	10.16
5	10.16	12.70
6	12.70	15.24
7	15.24	17.78
8	17.78	20.32
9	20.32	22.86
10	22.86	25.40
11	25.40	27.94
12	27.94	30.48
13	30.48	33.02
14	33.02	35.56
15	35.56	38.10
16	38.10	40.64
17	40.64	43.18
18	43.18	45.72
19	45.72	48.26
20	48.26	50.80

Number of Contacts	Dimensions	
	A	B
21	50.80	53.34
22	53.34	55.88
23	55.88	58.42
24	58.42	60.96
25	60.96	63.50
26	63.50	66.04
27	66.04	68.58
28	68.58	71.12
29	71.12	73.66
30	73.66	76.20
31	76.20	78.74
32	78.74	81.28
33	81.28	83.82
34	83.82	86.36
35	86.36	88.90
36	88.90	91.44
37	91.44	93.98
38	93.98	96.52
39	96.52	99.06
40	99.06	101.60

Ordering Grid



No. of Contacts  
02 to 40

Contact Plating

- A = Gold Flash All Over (Standard)
- B = Selective Gold Flash Contact Area/Tin On Tail
- C = Tin All Over
- G = 10µ" Gold Contact Area/Tin On Tail
- I = 30µ" Gold Contact Area/Tin On Tail

Dimension C (1/100mm) (Post Height)

0640 = 6.40mm (Standard)  
Or specify Custom Post Height  
eg. 0250 = 2.50mm

Dimension D (1/100mm) (Tail Length)

0300 = 3.00mm (Standard)  
Or specify Custom Footprint Width  
eg. 0250 = 2.50mm

Request Samples and Quotation

Packing Options  
B = Plastic Box (Standard)  
D = Tube  
E = Tube with Cap

Insulator Material  
N = Nylon 6T (Standard)  
P = PBT  
L = LCP

Dimension E (1/100mm) (Stack Height)

1040 = 10.40mm (Standard)  
Or specify Dimension E  
eg. 0508 = 5.08mm (minimum)

If lower stacking heights required  
contact GCT for lower profile  
insulator options

Specifications 规格

Material 物料

Insulator 绝缘体:  
Standard 标准: Polyamide, Nylon 6T, UL94V-0  
Options 可选: Polyester, LCP, UL94V-0  
Polyester, PBT, UL94V-0  
Contact 接触: Copper Alloy

Plating 电镀

Contact 接触: See ordering grid

Electrical 电气

Current Rating 电流额定值: 3 Amp  
Contact Resistance 接触电阻值: 20 mΩ max.  
Insulation Resistance 绝缘电阻值: 1000 MΩ min.  
Dielectric Withstand Voltage 寒耐电压: 600 V AC

Mechanical & Environmental 机械 & 环境

Operating Temperature 工作温度: -40°C to +105°C  
Soldering Process 可焊性  
Nylon 6T (Standard标准物料)  
IR Reflow 回流焊: 260°C for 10 sec.  
Wave 波峰焊: 230°C for 5-10 sec  
Manual Solder 人工焊接: 350°C for 3-5 sec  
LCP (Option 可选物料)  
IR Reflow 回流焊: 260°C for 10 sec.  
Wave 波峰焊: 250°C for 5-10 sec.  
Manual Solder 人工焊接: 350°C for 3-5sec  
PBT (Option 可选物料)  
(not suitable for hi-temp process 不适合高温处理)  
Manual Solder 人工焊接: 330°C for 3-5sec

Mates with 配套之母座

(Subject to Pin Length 在端子长度适合的情况下)  
BG090 BG095 BG096 BG100 BG110  
BG115 BG125 BG130 BG135 BG145  
BG205

Part Number		Product Description	
BG020		2.54mm Pitch Elevated Pin Header, Single Row, Through-Hole, Vertical	
Drawing Date		30th October 2006	
By	AJO	Tolerances (Except as Noted)	Units: Metric (mm)
Detail	Minimum Dim. E Added	X. ± 0.30 X.X ± 0.20 X.XX ± 0.15 X.XXX ± 0.10	Angle X.° ± 5° X.X° ± 2° X.XX° ± 1° X.XXX° ± 0.5°
Revision	E1	3rd Angle Projection	
Date	16/01/15	RoHS COMPLIANT 2011/65/EU Deca-BDE	

This drawing is confidential and copyright of Global Connector Technology, Ltd (GCT). This drawing must not be copied or disclosed without written consent. E & OE

**GCT**  
Global Connector Technology  
www.gct.co

Not to Scale	Drawn By AJO	Sheet No. 1/1
--------------	--------------	---------------