



# J2SD882

## 主要参数 MAIN CHARACTERISTICS

$I_c$	3A
$V_{CEO}$	30V
$P_c$ (SOT-89)	500mW

### 用途

- 高频开关电源
- 高频功率变换
- 一般功率放大电路

### APPLICATIONS

- High frequency switching power supply
- High frequency power transform
- Commonly power amplifier circuit

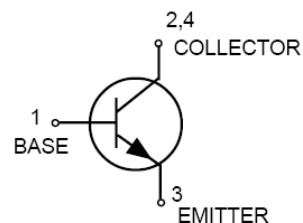
### 产品特性

- 硅外延
- 高开关速度
- 环保 (RoHS) 产品

### FEATURES

- Epitaxial silicon
- High switching speed
- RoHS product

## 封装 Package



## 订货信息 ORDER MESSAGE

Device	Marking	Shipping
J2SB882Q	82Q	2500/Tape&Reel
J2SB882P	82P	2500/Tape&Reel





绝对最大额定值 **ABSOLUTE RATINGS** ( $T_C=25^{\circ}\text{C}$ )

Parameter	Symbol	Limits	Unit
Collector-base voltage	$V_{CBO}$	40	V
Collector-emitter voltage	$V_{CEO}$	30	V
Emitter-base voltage	$V_{EBO}$	6	V
Peak Pulse Current	$I_{CM}$	3	A
Collector power dissipation	$P_C$	0.5	W
Junction temperature	$T_j$	150	$^{\circ}\text{C}$
Storage temperature	$T_{stg}$	-55 to 150	$^{\circ}\text{C}$

电特性 **ELECTRICAL CHARACTERISTIC** ( $T_A=25^{\circ}\text{C}$  unless otherwise noted)

Parameter	Symbol	Min.	Typ.	Max.	Unit
Collector-base breakdown voltage ( $I_C=100\text{mA}$ )	$BV_{CBO}$	40	-	-	V
Collector-emitter breakdown voltage ( $I_C=10\text{mA}$ )	$BV_{CEO}$	30	-	-	V
Emitter-base breakdown voltage ( $I_E=100\mu\text{A}$ )	$BV_{EBO}$	6	-	-	V
Collector cutoff current ( $V_{CB}=40\text{V}$ )	$I_{CBO}$	-	-	1	$\mu\text{A}$
Collector cutoff current ( $V_{CB}=30\text{V}$ )	$I_{CEO}$	-	-	10	$\mu\text{A}$
Emitter cutoff current ( $V_{EB}=6\text{V}$ )	$I_{EBO}$	-	-	1	$\mu\text{A}$
Collector-emitter saturation voltage ( $I_C/I_B=2\text{A}/0.2\text{A}$ )	$V_{CE}(\text{sat})$	-	-	0.5	V
Base-emitter saturation voltage ( $I_C/I_B=2\text{A}/0.2\text{A}$ )	$V_{BE}(\text{sat})$	-	-	1.5	V
DC current transfer ratio ( $V_{CE}=2\text{V}$ , $I_C=1\text{A}$ )	$h_{FE(1)}$	100	-	320	-
DC current transfer ratio ( $V_{CE}=2\text{V}$ , $I_C=100\text{mA}$ )	$h_{FE}$	32	-	-	-
Transition frequency ( $V_{CE}=5\text{V}$ , $I_E=0.1\text{A}$ , $f=10\text{MHz}$ )	$f_T$	50	-	-	MHz

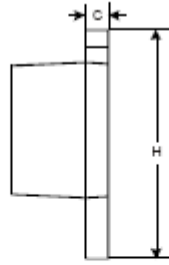
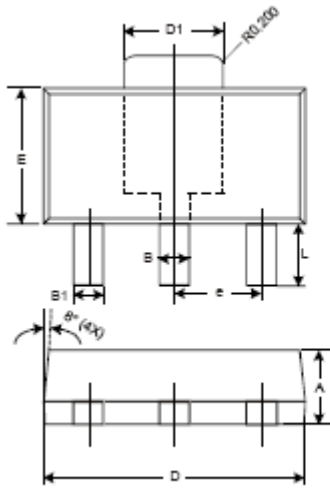
Note:

Item	Q	P
$h_{FE}$	100~200	160~320



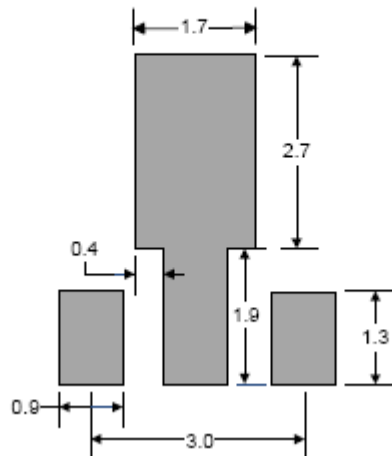


# 外形尺寸 PACKAGE MECHANICAL DATA



Unit: mm

SOT89-3L			
Dim	Min	Max	Typ
A	1.40	1.60	1.50
B	0.45	0.55	0.50
B1	0.37	0.47	0.42
C	0.35	0.43	0.38
D	4.40	4.60	4.50
D1	1.50	1.70	1.60
E	2.40	2.60	2.50
e	—	—	1.50
H	3.95	4.25	4.10
L	0.90	1.20	1.05
All Dimensions in mm			





### 注意事项

1. 吉林华微电子股份有限公司的产品销售分为直销和销售代理，无论哪种方式，订货时请与公司核实。
2. 购买时请认清公司商标，如有疑问请与公司本部联系。
3. 在电路设计时请不要超过器件的绝对最大额定值，否则会影响整机的可靠性。
4. 本说明书如有版本变更不另外告知。

### NOTE

1. Jilin Sino-microelectronics co., Ltd sales its product either through direct sales or sales agent , thus, for customers, when ordering , please check with our company.
2. We strongly recommend customers check carefully on the trademark when buying our product, if there is any question, please don't be hesitate to contact us.
3. Please do not exceed the absolute maximum ratings of the device when circuit designing.
4. Jilin Sino-microelectronics co., Ltd reserves the right to make changes in this. specification sheet and is subject to change without prior notice.

### 联系方式

#### 吉林华微电子股份有限公司

公司地址：吉林省吉林市深圳街 99 号

邮编：132013

总机：86-432-64678411

传真：86-432-64665812

网址：[www.hwdz.com.cn](http://www.hwdz.com.cn)

#### 销售业务部

地址：吉林省吉林市深圳街 99 号

邮编：132013

电话：86-432-64675588

64675688

64678411

传真：86-432-64671533

### CONTACT

#### JILIN SINO-MICROELECTRONICS CO., LTD.

ADD: No.99 Shenzhen Street, Jilin City, Jilin Province, China.

Post Code: 132013

Tel: 86-432-64678411

Fax: 86-432-64665812

Web Site: [www.hwdz.com.cn](http://www.hwdz.com.cn)

#### MARKET DEPARTMENT

ADD: No.99 Shenzhen Street, Jilin City, Jilin Province, China.

Post Code: 132013

Tel: 86-432-64675588

64675688

64678411

Fax: 86-432-64671533

### 附录 (Appendix) : 修订记录 (Revision History)

日期 Date	旧版本 Last Rev.	新版本 New Rev.	修订内容 Description of Changes

