

axial tapings

Straight Type Name	Taping Type Name	Lead ed (mm)	Packaging Style	Packaging & Q'ty (pcs)		Weight (g)		
				AMMO	Reel	AMMO	Reel	Net 1000pcs
MO1/2 ¹	MO1/2CT52	0.7	T52	2000	4000	1100	2070	480
MO1/2	MO1/2CL52	0.8	L52	2000	4000	1100	2070	480
MO1	MO1CT52	0.8	T52	1000	2000	910	1750	800
MO1	MO1CT521	0.8	T521	1000	—	910	—	800
MO1	MO1CL521	0.8	L521	1000	—	910	—	800
MO2	MO2CT521	0.8	T521	500	1000	775	1500	1350
MO2	MO2CT631	0.8	T631	1000	1000	1580	1600	1400
MO2	MO2CL631	0.8	L631	1000	1000	1580	1600	1400
MOS1/2 ²	MOS1/2CT26	0.6	T26	2000	—	350	—	140
MOS1/2	MOS1/2CT52	0.6	T52	2000	5000	590	1400	250
MOS1	MOS1CT52	0.6	T52	2000	4000	810	1550	350
MOS1	MOS1CT526	0.6	T52	2000	4000	810	1550	350
MOS1C8	MOS1CT526	0.8	T52	2000	4000	810	1550	350
MOS1	MOS1CL52	0.8	L52	2000	4000	810	1550	350
MOS2	MOS2CT52	0.8	T52	1000	2000	910	1750	800
MOS2	MOS2CT521	0.8	T521	1000	—	910	—	800
MOS2	MOS2CL521	0.8	L521	1000	1000	910	950	800
MOS3	MOS3CL521	0.8	L521	500	—	775	—	1350
MOS3	MOS3CT521	0.8	T521	500	1000	775	1500	1350
MOS3	MOS3CT631	0.8	T631	1000	1000	1580	1600	1400
MOS3	MOS3CL631	0.8	L631	1000	1000	1580	1600	1400
SPR1/4 ³	SPR1/4CT26	0.45	T26	2000	—	250	—	90
SPR1/4	SPR1/4CT52	0.45	T52	2000	5000	340	850	140
SPR1/2	SPR1/2CT26	0.6	T26	2000	—	350	—	140
SPR1/2	SPR1/2CT52	0.6	T52	2000	5000	590	1400	250
SPR1/2	SPR1/2CL52	0.65	L52	2000	5000	590	1400	250
SPR1	SPR1CT52	0.8	T52	2000	4000	1140	2150	500
SPR1	SPR1CL52	0.8	L52	2000	4000	1140	2150	500
SPR2	SPR2CT52	0.8	T52	1000	2000	910	1750	800
SPR2	SPR2CT521	0.8	T521	1000	—	910	—	800
SPR2	SPR2CL521	0.8	L521	1000	1000	910	950	800
SPR3	SPR3CT521	0.8	T521	500	1000	765	1500	1350
SPR3	SPR3CL521	0.8	T521	500	—	775	—	1350
SPR3	SPR3CT631	0.8	T631	1000	1000	1580	1600	1400
SPR3	SPR3CL631	0.8	L631	1000	1000	1580	1600	1400
LT1/6	LT1/6CT26	0.45	T26	3000	—	350	—	90
LT1/6	LT1/6CT52	0.45	T52	3000	5000	500	900	120
LT1/4	LT1/4CT26	0.6	T26	2000	—	360	—	160
LT1/4	LT1/4CT52	0.6	T52	2000	5000	500	1300	215
RF16	RF16CT26	0.45	T26	2000	—	220	—	90
RF16	RF16CT52	0.45	T52	2000	5000	340	800	150
RF25	RF25CT26	0.6	T26	2000	—	330	—	140
RF25	RF25CT52	0.6	T52	2000	5000	500	1300	230
RF50	RF50CT52	0.6	T52	2000	4000	660	1320	310
RF1	RF1CT52	0.8	T52	2000	4000	1080	2050	500
RF2	RF2CT521	0.8	T521	500	1000	700	1420	1300
RF2	RF2CT631	0.8	T631	1000	—	1410	—	1350
Z16	Z16CT26	0.45	T26	5000	—	615	—	110
Z16	Z16CT52	0.45	T52	3000	5000	530	920	150
Z25	Z25CT26	0.6	T26	2000	—	410	—	180
Z25	Z25CT52	0.6	T52	2000	5000	530	1400	240
J1/6Z	J1/6ZCT26	0.5	T26	2000	—	230	—	90
J1/6Z	J1/6ZCT52	0.5	T52	2000	5000	320	950	130
J1/4Z	J1/4ZCT26	0.6	T26	2000	—	320	—	130
J1/4Z	J1/4ZCT52	0.6	T52	2000	5000	460	1310	190
JL6	JL6CT26	0.6	T26	5000	—	515	—	100
JL6	JL6CT52	0.6	T52	5000	1000	815	—	160
LP1/8	LP1/8CT26	0.65	T26	2000	—	410	—	170
LP1/8	LP1/8CT52	0.65	T52	2000	—	580	—	260
LP1/16	LP1/16CT26	0.5	T26	4000	—	450	—	100
LP1/16	LP1/16CT52	0.5	T52	4000	—	630	—	150
SDT101A	SDT101AXCT26	0.4	T26	2000	—	350	—	75
SDT101A	SDT101AXCT52	0.4	T52	2000	—	470	—	105
SA05	SA05CT52	0.5	T52	2000	—	420	—	160
CFS1/4	CFS1/4 CT26	0.45	T26	5000	—	615	—	110
CFS1/4	CFS1/4 CT52	0.45	T52	3000	5000	530	920	150
CF1/4	CF1/4 CT26	0.6	T26	2000	—	410	—	180
CF1/4	CF1/4 CT52	0.6	T52	2000	5000	530	1400	240
CFB1/2	CFB1/2 CT52	0.7	T52	2000	4000	1110	2280	520
CFS1/2	CFS1/2 CT26	0.6	T26	2000	—	525	—	230

Packaging

(1) AMMO Pack
(Symbol: A) Standard



(2) Reel (Symbol: R)



*1: The same taping applicable also to MOX.

*2: The same taping applicable also to MOSX.

*3: The same taping applicable also to SPRX.

Specifications given herein may be changed at any time without prior notice. Please confirm technical specifications before you order and/or use. 11/23/14

axial tapings

Straight Type Name	Taping Type Name	Lead od (mm)	Packaging Style	Packaging & Q'ty (pcs)		Weight (g)		
				AMMO	Reel	AMMO	Reel	Net 1000pcs
CFS1/2	CFS1/2 CT52	0.6	T52	2000	4000	640	1500	290
CFPS1/4	CFPS1/4 CT26	0.45	T26	5000	—	615	—	100
CFPS1/4	CFPS1/4 CT52	0.45	T52	3000	—	530	—	150
CFP1/4	CFP1/4 CT26	0.6	T26	2000	—	410	—	180
CFP1/4	CFP1/4 CT52	0.6	T52	2000	5000	530	1400	240
CFP1/4	CFP1/4 CL52	0.65	L52	2000	—	530	—	240
CFPS1/2	CFPS1/2 CT26	0.6	T26	2000	—	525	—	230
CFPS1/2	CFPS1/2 CT52	0.6	T52	2000	4000	640	1500	290
MFS1/4*	MFS1/4oCT26	0.45	T26	3000	—	350	—	90
MFS1/4	MFS1/4oCT52	0.45	T52	3000	—	500	—	120
MFS1/2	MFS1/2oCT26	0.6	T26	2000	—	360	—	160
MFS1/2	MFS1/2oCT52	0.6	T52	5000	5000	500	1300	215
MF1/4	MF1/4oCT26	0.6	T26	2000	—	360	—	160
MF1/4	MF1/4oCT52	0.6	T52	5000	5000	500	1300	215
MF1/2	MF1/2oCT52	0.6	T52	2000	4000	900	2000	360
MFP1/4	MFP1/4oCT26	0.6	T26	2000	—	450	—	250
MFP1/4	MFP1/4oCT52	0.6	T52	2000	5000	470	1400	250
MFP1/2	MFP1/2oCT52	0.6	T52	2000	4000	950	2010	430
RNS1/4	RNS1/4oCT52	0.6	T52	2000	4000	600	1550	440
RNS1/8	RNS1/8oCT26	0.6	T26	2000	—	400	—	180
RNS1/8	RNS1/8oCT52	0.6	T52	2000	5000	600	1550	220
RNS1/2	RNS1/2oCT52	0.6	T52	2000	4000	1100	2150	500
RNS1	RNS1oCT521	0.8	T521	500	1000	750	2100	1500
RCR16	RCR16 CT26	0.45	T26	5000	—	500	—	100
RCR16	RCR16 CT52	0.45	T52	3000	—	450	—	150
RCR25	RCR25 CT26	0.6	T26	2000	—	390	—	180
RCR25	RCR25 CT52	0.6	T52	2000	—	520	—	240
RCR25EN	RCR25EN CT26	0.6	T26	2000	—	390	—	180
RCR25RN	RCR25EN CT52	0.6	T52	2000	—	520	—	240
RCR50 (+)	RCR50(+) CT52	0.7	T52	2000	3000	1050	1630	520
RCR50EN	RCR50ENCT52	0.7	T52	2000	3000	1050	1630	520
RCR60	RCR60 CT52	0.7	T52	2000	3000	1050	1630	520
RCR75	RCR75 CT52	0.8	T52	1000	—	830	—	800
RCR100	RCR100 CT521	0.8	T521	500	—	750	—	1400
RCR100	RCR100 CT631	0.8	T631	1000	—	1450	—	1400
RK1/4	RK1/4oCT26	0.6	T26	2000	—	360	—	250
RK1/4	RK1/4oCT52	0.6	T52	2000	5000	500	1300	250
RK1/2	RK1/2oCT52	0.6	T52	2000	4000	900	—	380
RK1	RK1oCT521	0.8	T521	500	—	700	—	1340
PCF1/2	PCF1/2 CT52	0.7	T52	—	2000	—	1140	450
PCF1	PCF1 CT631	0.8	T631	—	1000	—	1530	1270
PCF2	PCF2 CT631	0.8	T631	—	500	—	1340	2160
HPC1/2	HPC1/2 CT52	0.8	T52	1000	2000	800	1440	600
HPC1	HPC1 CT631	0.8	T631	—	1000	—	1440	1170
CW1/4	CW1/4 CT26	0.45	T26	2000	—	500	—	150
CW1/4	CW1/4 CT52	0.45	T52	3000	—	430	—	150
CW1/2	CW1/2 CT52	0.6	T52	2000	—	480	—	250
CW1*	CW1 CT52	0.8	T52	1000	—	600	—	650
CW2*	CW2 CT52	0.8	T52	1000	—	780	—	950
CW2*	CW2 CT521	0.8	T521	1000	—	800	—	950
CW3*	CW3 CT521	0.8	T521	500	—	750	—	1780
CW3*	CW3 CT631	0.8	T631	500	—	750	—	1780
CW1S	CW1S CT52	0.6	T52	2000	—	480	—	250

o T.C.R. * 4 The same taping applicable also to CW-P, CW-X and CW-H
** ±0.1% and ±0.25% not available in reel packaging

Packaging

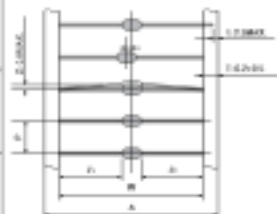
(1) AMMO Pack
(Symbol: A) Standard



(2) Reel (Symbol: R)



T-Type



L-Type



T-Type

Packaging Style	Dimensions (mm)				Accumulated Tolerance
	W	P	A	h ₁ -h ₂	
T26	26 ^{+0.2}	5.00±0.3	39±1.0	0.2Max.	250.0±3mm/Px50
	26 ^{-0.2}	5.00±0.3	39±1.0	1.0Max.	100.0±2mm/Px20
T52	52±1	5.08±0.38	65±1.0	1.0Max.	101.6±2mm/Px20
T521	52±1	10.16±0.80	65±1.0	1.0Max.	203.2±3mm/Px20
T631	63±1	10.16±0.80	—	1.0Max.	203.2±3mm/Px20

*5 Applied to CFS1/4 (CFPS1/4) T26 Only

L-Type

Type	Dimensions (mm)			
	H±1	W	d	h ₁ , h ₂
MO ¹	1/2oL52	25.5	1.20-1.45	0.8
	1 oL521	36.0		0.8
	2 oL631	42.5		0.8
MOS ²	1 oL52	25.5	1.20-1.45	0.8
	2 oL521	36.0		0.8
	3 oL631	42.5		0.8
SPR ³	1/2oL52	26.0	1.17-1.40	0.65
	1 oL52	25.5	1.20-1.45	0.8
	2 oL521	36.0		0.8
3 oL631	42.5	0.8		
CFP	1/4oL52	H: 24.5±1	1.17-1.4	0.65
CW	1/2oL52	26.0	1.05-1.35	0.8
CW	1 oL52	27.5	1.20-1.40	0.8

Specifications given herein may be changed at any time without prior notice. Please confirm technical specifications before you order and/or use.

11/23/14

radial tapings

(mm)

VT					VT					VTE				
Radial Type Name	Radial Lead od	AMMO (pcs)	Reel (pcs)	Weight g/AMMO	Radial Type Name	Radial Lead od	AMMO (pcs)	Reel (pcs)	Weight g/AMMO	Radial Type Name	Radial Lead od	AMMO (pcs)	Reel (pcs)	Weight g/AMMO
MFS1/2○CVT	0.6	2000	2500	750	MFS1/4○CVT	0.45	3000	3000	620	MFS1/2○CVTE	0.6	2000	2500	750
MF1/4○CVT	0.6	2000	2500	750	CFS1/4 CVT	0.45	3000	3000	720	MF1/4○CVTE	0.6	2000	2500	750
RNS1/8○CVT	0.6	2000	2500	750	SPR1/4 CVT	0.45	3000	3000	720	RNS1/8○CVTE	0.6	2000	2500	750
J1/4Z CVT*	0.6	2000	2500	670						MOS1/2 CVTE	0.6	2500	2500	930
CF1/4 CVT	0.6	2000	2500	720						SPR1/2 CVTE	0.6	2500	2500	930
CFS1/2 CVT	0.6	2000	2500	800						CF1/4 CVTE	0.6	2500	2500	900
CFP1/4 CVT	0.6	2000	2500	720						CFS1/2 CVTE	0.6	2500	2500	1000
CFPS1/2 CVT	0.6	2000	2500	800						RF25 CVTE	0.6	2000	2500	750
RF25 CVT	0.6	2000	2500	750										
VTP					VTP									
Radial Type Name	Radial Lead od	AMMO (pcs)	Reel (pcs)	Weight g/AMMO	Radial Type Name	Radial Lead od	AMMO (pcs)	Reel (pcs)	Weight g/AMMO	Radial Type Name	Radial Lead od	AMMO (pcs)	Reel (pcs)	Weight g/AMMO
MOS1/2 CVTP	0.6	2000	2500	740	MF1/4○CVTP	0.6	2000	2500	750	CW1/2 CVTP	0.6	2000	—	750
MOS1 CVTP	0.6	1500	—	1110	RNS1/8○CVTP	0.6	2000	2500	750	CW1 CVTP	0.8	1000	—	740
MOS2 CVTP	0.65	1000	—	1080	CF1/4 CVTP	0.6	2000	2500	740	CW2 CVTP	0.8	1000	—	1080
SPR1/2 CVTP	0.6	2000	2500	740	CFS1/2 CVTP	0.6	2000	2500	800	J1/4Z CVTP	0.6	2000	2500	670
SPR1 CVTP	0.6	1000	—	740	CFP1/4 CVTP	0.6	2000	2500	740					
SPR2 CVTP	0.65	1000	—	1080	CFPS1/2 CVTP	0.6	2000	2500	800					
MFS1/2○CVTP	0.6	2000	2500	750	RF25 CVTP	0.6	2000	2500	750					
MT					MHT					FT				
Radial Type Name	Radial Lead od	AMMO (pcs)	Reel (pcs)	Weight g/AMMO	Radial Type Name	Radial Lead od	AMMO (pcs)	Reel (pcs)	Weight g/AMMO	Radial Type Name	Radial Lead od	AMMO (pcs)	Reel (pcs)	Weight g/AMMO
MFS1/4○CMT	0.45	3000	—	620	CFS1/4 CMHT	0.45	3000	—	720	BPR26 CFT	0.6	500	—	790
CFPS1/4 CMT	0.45	3000	3000	720	CFPS1/4 CMHT	0.6	3000	—	720	BPR58 CFT	0.8	500	—	1940
CFPS1/4 CMT	0.45	3000	3000	720	RF16 CMHT	0.45	3000	—	240					
J1/6Z CMT	0.5	2000	—	450										

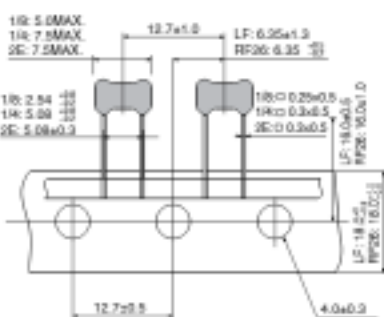
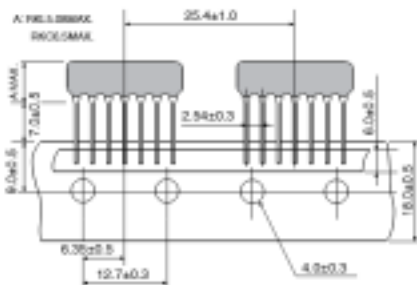
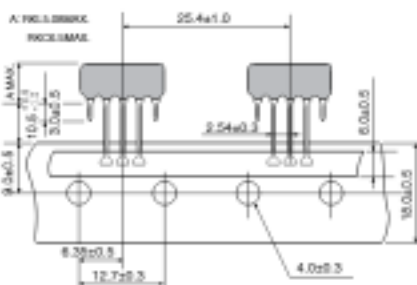
○T.C.R. * The insulated coating on the lead wire is not available.
Also for MOSX, SPRX types, radial taping in the same shape as MOS, SPR types is applicable.

Specifications given herein may be changed at any time without prior notice. Please confirm technical specifications before you order and/or use.

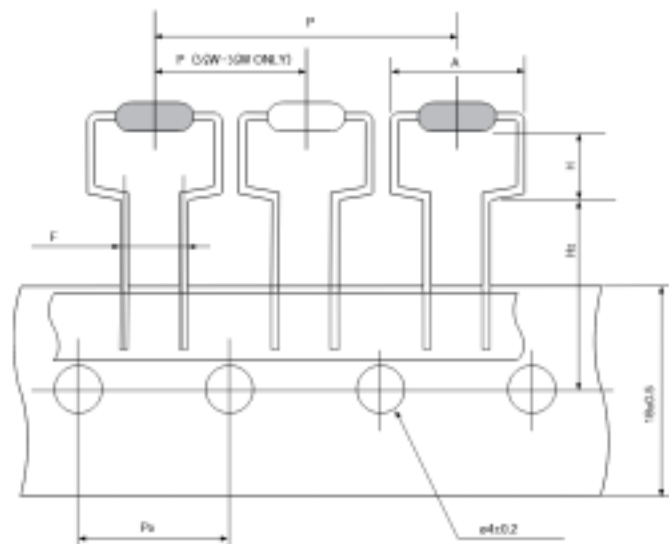
1/03/11

radial tapings

(mm)

T					TBA					TPA				
														
Radial Type Name	Radial Lead od	AMMO (pcs)	Reel (pcs)	Weight g/AMMO	Radial Type Name	Radial Lead od	AMMO (pcs)	Reel (pcs)	Weight g/AMMO	Radial Type Name	Radial Lead od	AMMO (pcs)	Reel (pcs)	Weight g/AMMO
LF1/8TT	—	2000	—	550	RKL TBA	—	1000	—	850(9Pin)	RKL TPA	—	1000	—	800(9Pin)
LF1/4TT	—	2000	—	580	RKC TBA	—	1000	—	850(9Pin)	RKC TPA	—	1000	—	800(9Pin)
RF26B 2ETT	—	2000	—	580										

GT



Radial Type Name	Radial Lead od	AMMO (pcs)	Weight g/AMMO	F	P	P ₀	H	H ₀	A _{Max.}
MOS1/2CGT	0.6	2000	740	5±0.5	12.7±1.0	12.7±0.3	6.5 ^{+0.2} _{-0.2}	16±0.5	12
MOS1CGT	0.8	1000	730	7.5 ^{+0.5} _{-0.2}	30±1.0	15±0.3	6.5 ^{+0.2} _{-0.2}	19±0.7	14.5
MOS1CGT4	0.8	1000	700				4.0 ^{+0.2} _{-0.2}		17.5
MOS2CGT	0.8	500	580				7.5 ^{+0.2} _{-0.2}		21
MOS2CGT4	0.8	500	580				4.0 ^{+0.2} _{-0.2}		
MOS3CGT	0.8	500	910				8.5 ^{+0.2} _{-0.2}		
SPR1/2CGT	0.6	2000	740	5±0.5	12.7±1.0	12.7±0.3	6.5 ^{+0.2} _{-0.2}	16±0.5	12
SPR1CGT	0.8	1000	770	7.5 ^{+0.5} _{-0.2}	30±1.0	15±0.3	6.5 ^{+0.2} _{-0.2}	19±0.7	14.5
SPR2CGT	0.8	500	540				7.5 ^{+0.2} _{-0.2}		17.5
SPR3CGT	0.8	500	910				8.5 ^{+0.2} _{-0.2}		21
CFP1/4CGT	0.65	2000	720				5±0.5		12.7±1.0
CFPS1/2CGT	0.8	1500	600	5±0.5	12.7±1.0	12.7±0.3	6.5 ^{+0.2} _{-0.2}	16±0.5	12
CW1HCGT	0.8	1000	920	7.5 ^{+0.5} _{-0.2}	30±1.0	15±0.3	6.5 ^{+0.2} _{-0.2}	19±0.7	14.5
RF50CGT	0.8	1000	730				8.5 ^{+0.2} _{-0.2}		21
RF1CGT	0.8	1000	770				7.5 ^{+0.2} _{-0.2}		17.5
RF2CGT	0.8	500	1820				8.5 ^{+0.2} _{-0.2}		21
CW2CGT	0.8	500	1080						
CW3CGT	0.8	500	1820						

© T.C.R.

Also for MOSX, SPRX types, radial taping in the same shape as MOS, SPR types is applicable.

Specifications given herein may be changed at any time without prior notice. Please confirm technical specifications before you order and/or use. 1/04/11

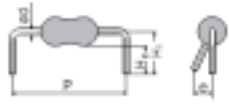
forming (not available taping)

Forming Style	Forming Type Name	Forming Dimension (mm)				Weight g/100pcs	Basic Unit (pcs)	Straight Type Name	
		P±1	H3±1orH5	H4±1orH6	d				
<p>L Forming</p>	CW1/2CL10A (CW1SCL10A)							CW1/2 (CW1S)	
	CW1CL12.5A (CW1PCL12.5A) (CW1HCL12.5A)	10.0	5.3	4.5±0.5	0.6	24	2000	CW1 (CW1P) (CW1H)	
	CW1CL15A (CW1PCL15A) (CW1HCL15A)	12.5	6.5	4.0±0.5	0.8	56	2000	CW1 (CW1P) (CW1H)	
	CW2CL20A (CW2PCL20A) (CW2HCL20A)	15.0	5.3	4.5±0.5	0.8	56	2000	CW2 (CW2P) (CW2H)	
	CW2CL15A (CW2PCL15A) (CW2HCL15A)	15.0	7.0	4.5±0.5	0.8	84	2000	CW2 (CW2P) (CW2H)	
	CW3CL20A (CW3PCL20A) (CW3HCL20A)	20.0	8.0	4.5±0.5	0.8	84	2000	CW3 (CW3P) (CW3H)	
	CW3CL25A (CW3PCL25A) (CW3HCL25A)	20.0	8.0	4.0±0.5	0.8	160	1000	CW3 (CW3P) (CW3H)	
	CW5CL30A	25.0	7.0	4.5±0.5	0.8	160	1000	CW5	
	CW5CL35A	30.0	8.5	4.5±0.5	0.8	524	500	CW5	
	CW5CL30A	35.0	5.5	4.5±0.5	0.8	524	500	CW5	
	MO1/2CL12.5A (MOX1/2CL12.5A)								MO1/2 (MOX1/2)
	MO1/2CL15A (MOX1/2CL15A)	12.5	6.5	4.0	0.8	52	2000	MO1/2 (MOX1/2)	
	MO1CL15A (MOX1CL15A)	15.0	5.3	4.0	0.8	52	2000	MO1 (MOX1)	
	MO1CL20A (MOX1CL20A)	15.0	7.0	4.0	0.8	69	2000	MO1 (MOX1)	
	MO2CL20A (MOX2CL20A)	20.0	4.8	4.0	0.8	69	2000	MO1 (MOX1)	
	MO2CL25A (MOX2CL25A)	20.0	8.0	4.0	0.8	142	1000	MO2 (MOX2)	
	MO3CL30A (MOX3CL30A)	25.0	7.0	4.0	0.8	142	1000	MO2 (MOX2)	
	MO3CL35A (MOX3CL35A)	30.0	8.5	4.0	0.8	480	500	MO2 (MOX2)	
	MO3CL30A	35.0	5.5	4.0	0.8	480	500	MO3 (MOX3)	
	MO3CL35A								MO3 (MOX3)
	MOS1/2CL10A (MOSX1/2CL10A)								MOS1/2 (MOSX1/2)
	MOS1CL12.5A (MOSX1CL12.5A)	10.0	5.3	4.0	0.6	23	2000	MOS1 (MOSX1)	
	MOS1CL15A (MOSX1CL15A)	12.5	7.0	4.0	0.8	31	2000	MOS1 (MOSX1)	
	MOS2CL15A (MOSX2CL15A)	15.0	6.5	4.0	0.8	31	2000	MOS1 (MOSX1)	
	MOS2CL20A (MOSX2CL20A)	15.0	7.0	4.0	0.8	71	2000	MOS2 (MOSX2)	
	MOS2CL20A (MOSX2CL20A)	20.0	9.0	4.0	0.8	71	2000	MOS2 (MOSX2)	
	MOS3CL20A (MOSX3CL20A)	20.0	8.0	4.0	0.8	146	1000	MOS2 (MOSX2)	
	MOS3CL25A (MOSX3CL25A)	20.0	8.0	4.0	0.8	146	1000	MOS3 (MOSX3)	
	MOS3CL25A (MOSX3CL25A)	25.0	7.0	4.0	0.8	146	1000	MOS3 (MOSX3)	
	MOS5CL30A (MOSX5CL30A)	30.0	8.5	4.0	0.8	524	500	MOS3 (MOSX3)	
	MOS5CL35A (MOSX5CL35A)	35.0	5.5	4.0	0.8	524	500	MOS5 (MOSX5)	
	MOS5CL35A								MOS5 (MOSX5)
SPR1/2CL10A (SPRX1/2CL10A)								SPR1/2 (SPRX1/2)	
SPR1CL12.5A (SPRX1CL12.5A)	10.0	5.3	4.0	0.6	23	2000	SPR1 (SPRX1)		
SPR1CL15A (SPRX1CL15A)	12.5	6.5	4.0	0.8	54	2000	SPR1 (SPRX1)		
SPR2CL15A (SPRX2CL15A)	15.0	5.3	4.0	0.8	54	2000	SPR1 (SPRX1)		
SPR2CL20A (SPRX2CL20A)	15.0	7.0	4.0	0.8	71	2000	SPR2 (SPRX2)		
SPR2CL20A (SPRX2CL20A)	20.0	9.0	4.0	0.8	71	2000	SPR2 (SPRX2)		
SPR3CL20A (SPRX3CL20A)	20.0	8.0	4.0	0.8	141	1000	SPR2 (SPRX2)		
SPR3CL25A (SPRX3CL25A)	20.0	7.0	4.0	0.8	141	1000	SPR3 (SPRX3)		
SPR3CL25A (SPRX3CL25A)	25.0	7.0	4.0	0.8	141	1000	SPR3 (SPRX3)		
SPR5CL30A (SPRX5CL30A)	30.0	8.5	4.0	0.8	456	500	SPR3 (SPRX3)		
SPR5CL35A (SPRX5CL35A)	35.0	5.5	4.0	0.8	456	500	SPR5 (SPRX5)		
SPR5CL35A								SPR5 (SPRX5)	
RCR50(+)-CL15A	15.0	5.3	4.5	0.7	34	2000	RCR50 (+)		
RCR50ENCL15A	15.0	5.3	4.5	0.7	34	2000	RCR50EN		
RCR60CL15A	15.0	5.3	4.5	0.7	34	2000	RCR60		
RCR75CL15A	15.0	7.0	4.5	0.8	69	2000	RCR75		
RCR100CL25A	25.0	7.0	4.0	0.8	142	1000	RCR100		
RK1/4CL10A	10.0	5.3	4.5	0.6	23	1000	RK1/4		
RK1/4CL20A	20.0	8.8	4.5	0.8	146	1000	RK1		
RF25CL10A	10.0	5.35	5.0	0.6	23	2000	RF25		
RF50CL12.5A	12.5	6.0	5.2	0.6	29	2000	RF50		
RF50CL15A	15.0	6.0	5.3	0.6	29	2000	RF50		
RF1CL12.5A	12.5	6.5	4.8	0.8	46	2000	RF1		
RF1CL15A	15.0	5.3	4.5	0.8	46	2000	RF1		
RF1CL20A	20.0	5.3	4.5	0.8	46	2000	RF1		
RF2CL20A	20.0	8.0	5.0	0.8	141	1000	RF2		
RF2CL25A	25.0	7.0	4.5	0.8	141	1000	RF2		
<p>U Forming</p>	MFS1/4CU	-	5.5Max.	15.0±1.0	0.45	14	2000	MFS1/4	
	CFS1/4CU	-	5.5Max.	15.0±1.0	0.45	12	2000	CFS1/4	
<p>U Forming</p>	MF1/4OCU	-	9.5Max.	28.0±3.0	0.6	23	2000	MF1/4	
	MFP1/4OCU	-	9.5Max.	28.0±3.0	0.6	23	2000	MFP1/4	
	RK1/4OCU	-	9.5Max.	30.0±3.0	0.6	23	1000	RK1/4	
	RK1/4OCUC-5	-	9.5Max.	5.0±1.0	0.6	23	1000	RK1/4	
	CF1/4CUC	-	10.0Max.	10.0±1.0	0.6	23	1000	CF1/4	
CFS1/2CU	-	9.5Max.	30.0±3.0	0.6	44	1000	CFS1/2		
LT1/4CU	-	9.5Max.	28.0±3.0	0.6	23	2000	LT1/4		
<p>U Forming</p>	MO1/2CU (MOX1/2CU)	-	19.5±3.0	15.0Min.	0.7	49	1000	MO1/2 (MOX1/2)	
	MO1CU (MOX1CU)	-	24.0±3.0	15.0Min.	0.8	69	1000	MO1 (MOX1)	
	MO2CU (MOX2CU)	-	25.0±3.0	15.0Min.	0.8	71	1000	MO2 (MOX2)	
	MOS1CU (MOSX1CU)	-	19.5±3.0	15.0Min.	0.8	23	1000	MOS1 (MOSX1)	
	MOS2CU (MOSX2CU)	-	22.0±3.0	15.0Min.	0.8	71	1000	MOS2 (MOSX2)	
	MOS3CU (MOSX3CU)	-	25.0±3.0	15.0Min.	0.8	146	1000	MOS3 (MOSX3)	
	SPR1CU (SPRX1CU)	-	19.5±3.0	15.0Min.	0.8	54	1000	SPR1 (SPRX1)	
	SPR2CU (SPRX2CU)	-	22.0±3.0	15.0Min.	0.8	93	1000	SPR2 (SPRX2)	
	SPR3CU (SPRX3CU)	-	25.0±3.0	15.0Min.	0.8	141	1000	SPR3 (SPRX3)	

Specifications given herein may be changed at any time without prior notice. Please confirm technical specifications before you order and/or use.

11/23/14

forming (not available taping)

Forming Style	Forming Type Name	Forming Dimension (mm)					Weight g/100pcs	Basic Unit (pcs)	Straight Type Name
		P±1	H1	H2	e Max.	d			
 <p>M Forming</p>	MFS1/40CM5F	5.0	-	5.0±1.0	2.0	0.45	14	2000	MFS1/4
	MFS1/40CM5R	5.0	10.0±1.0	-	2.0	0.45	14	2000	MFS1/4
	MFS1/40CM5W	5.0	-	15.0	2.0	0.45	14	2000	MFS1/4
	MFS1/20CM10R	10.0	-	5.0±1.0	2.0	0.6	23	2000	MFS1/2
	MF1/40CM10F	10.0	-	5.0±1.0	2.0	0.6	23	2000	MF1/4
	MF1/40CM12.5R	12.5	10.0±1.0	-	2.0	0.6	23	2000	MF1/4
	MF1/20CM12.5R	12.5	10.0±1.0	-	2.0	0.6	41	2000	MF1/2
	MF1/20CM15R	15.0	10.0±1.0	-	2.0	0.6	41	2000	MF1/2
	MFP1/40CM10F	10.0	-	5.0±1.0	1.7	0.6	24	2000	MFP1/4
	MFP1/40CM12.5R	12.5	10.0±1.0	-	1.7	0.6	24	2000	MFP1/4
	MFP1/20CM12.5R	12.5	10.0±1.0	-	2.0	0.6	41	2000	MFP1/2
	MFP1/20CM15R	15.0	10.0±1.0	-	2.0	0.6	41	2000	MFP1/2
	RCR16CM5F	5.0	-	5.0±1.0	2.0	0.45	14	2000	RCR16
	RCR25CM10F	10.0	-	5.0±1.0	2.0	0.6	23	2000	RCR25
	RCR25ENCM10F	10.0	-	5.0±1.0	2.0	0.6	23	2000	RCR25EN
	RCR50(+)-CM15F	15.0	-	5.0±1.0	2.0	0.7	40	2000	RCR50
	RCR50CM15F	15.0	-	5.0±1.0	2.0	0.7	40	2000	RCR50+
	RCR60CM15F	15.0	-	5.0±1.0	2.0	0.7	40	2000	RCR60
	RCR100CM20E	20.0	-	4.6±1.0	2.0	0.8	120	1000	RCR100
	RK1/40CM10F	10.0	-	5.0±1.0	1.7	0.6	21	1000	RK1/4
	RK1/40CM10R	10.0	-	10.0±1.0	1.7	0.6	21	1000	RK1/4
	RK1/40CM12.5R	12.5	-	10.0±1.0	1.7	0.6	23	1000	RK1/4
	RK1/20CM15F	15.0	-	5.0±1.0	2.0	0.6	40	1000	RK1/4
	RK1/20CM12.5F	12.5	-	5.0±1.0	2.0	0.6	37	1000	RK1/2
	RK1/20CM15R	15.0	-	10.0±1.0	2.0	0.6	37	1000	RK1/2
	CFS1/4CM5F	5.0	5.9±1.0	5.0±1.0	1.5	0.45	12	2000	CFS1/4
	CF1/4CM10H	10.0	6.0±1.0	4.8±1.0	1.7	0.6	23	1000	CF1/4
	CF1/4CM12.5H	12.5	6.0±1.0	4.8±1.0	1.7	0.6	23	1000	CF1/4
	CFB1/2CM12.5K	12.5	7.0±1.0	5.0±1.0	1.7	0.7	44	1000	CFB1/2
	CFS1/2CM10H	10.0	6.0±1.0	4.8±1.0	1.7	0.6	26	1000	CFS1/2
	CFPS1/4CM5F	5.0	5.9±1.0	5.0±1.0	1.5	0.45	12	2000	CFPS1/4
	CFP1/4CM10H	10.0	6.0±1.0	4.8±1.0	1.7	0.6	23	1000	CFP1/4
	CFPB1/2CM12.5K	12.5	7.0±1.0	5.0±1.0	2.0	0.7	44	1000	CFB1/2
	LT1/8CM5F	5.0	-	5.0±1.0	2.0	0.45	14	2000	LT1/8
	LT1/8CM5R	5.0	10.0±1.0	-	2.0	0.45	14	2000	LT1/8
	LT1/8CM5W	5.0	-	15.0	2.0	0.45	14	2000	LT1/8
	LT1/4CM10F	10.0	-	5.0±1.0	2.0	0.6	23	2000	LT1/4
	LT1/4CM10R	10.0	10.0±1.0	-	2.0	0.6	23	2000	LT1/4
	LT1/4CM12.5R	12.5	10.0±1.0	-	2.0	0.6	23	2000	LT1/4
	J1/8ZCM7.5H	7.5	-	5.0±1.0	1.5	0.5	5	1000	J1/8Z
	J1/4ZCM10H	10.0	-	5.0	1.5	0.6	9	1000	J1/4Z
	RF16CM5F	5.0	-	5.0±1.0	2.0	0.45	12	2000	RF16
	RF25CM10X	10.0	16.0±1.0	14.8±1.0	1.5	0.6	23	2000	RF25
	RF50CM12.5E	12.5	-	4.5±1.0	1.5	0.6	29	2000	RF50
	RF1CM15F	15.0	-	5.0±1.0	1.5	0.8	46	2000	RF1
MO1/2CM15F	15.0	-	5.0±1.0	2.0	0.7	40	2000	MO1/2	
MO1CM15S	15.0	-	11.5±1.5	2.0	0.8	75	2000	MO1	
MO2CM20E	20.0	-	4.6±1.0	2.0	0.8	120	1000	MO2	
MO2CM25C	25.0	-	3.5±1.0	2.0	0.8	120	1000	MO2	
MOX1/2CM15F	15.0	-	5.0±1.0	2.0	0.7	40	2000	MOX1/2	
MOX1CM15S	15.0	-	11.5±1.5	2.0	0.8	75	2000	MOX1	
MOX2CM20E	20.0	-	4.6±1.0	2.0	0.8	120	1000	MOX2	
MOX2CM25C	25.0	-	3.5±1.0	2.0	0.8	120	1000	MOX2	
MOS1/2CM10F	10.0	-	5.0±1.0	2.0	0.6	23	2000	MOS1/2	
MOS1CM12.5D	12.5	-	4.0±1.0	2.0	0.8	31	2000	MOS1	
MOS1CM15F	15.0	-	5.0±1.0	2.0	0.8	31	2000	MOS1	
MOS2CM15E	15.0	-	4.5±1.0	2.0	0.8	71	2000	MOS2	
MOS2CM20U	20.0	-	13.5±1.5	2.0	0.8	71	2000	MOS2	
MOS3CM20E	20.0	-	4.6±1.0	2.0	0.8	120	1000	MOS3	
MOSX1/2CM10F	10.0	-	5.0±1.0	2.0	0.6	23	2000	MOSX1/2	
MOSX1CM12.5D	12.5	-	4.0±1.0	2.0	0.8	31	2000	MOSX1	
MOSX1CM15F	15.0	-	5.0±1.0	2.0	0.8	31	2000	MOSX1	
MOSX2CM15E	15.0	-	4.5±1.0	2.0	0.8	71	2000	MOSX2	
MOSX2CM20U	20.0	-	13.5±1.5	2.0	0.8	71	2000	MOSX2	
MOSX3CM20E	20.0	-	4.6±1.0	2.0	0.8	120	1000	MOSX3	
SPR1/2CM10F	10.0	-	5.0±1.0	2.0	0.6	23	2000	SPR1/2	
SPR1CM12.5D	12.5	-	4.0±1.0	2.0	0.8	44	2000	SPR1	
SPR1CM15F	15.0	-	5.0±1.0	2.0	0.8	44	2000	SPR1	
SPR2CM15E	15.0	-	4.5±1.0	2.0	0.8	71	2000	SPR2	
SPR3CM20E	20.0	-	4.6±1.0	2.0	0.8	120	1000	SPR3	
SPRX1/2CM10F	10.0	-	5.0±1.0	2.0	0.6	23	2000	SPRX1/2	
SPRX1CM12.5D	12.5	-	4.0±1.0	2.0	0.8	44	2000	SPRX1	
SPRX1CM15F	15.0	-	5.0±1.0	2.0	0.8	44	2000	SPRX1	
SPRX2CM15E	15.0	-	4.5±1.0	2.0	0.8	71	2000	SPRX2	
SPRX3CM20E	20.0	-	4.6±1.0	2.0	0.8	120	1000	SPRX3	

© T.C.R.

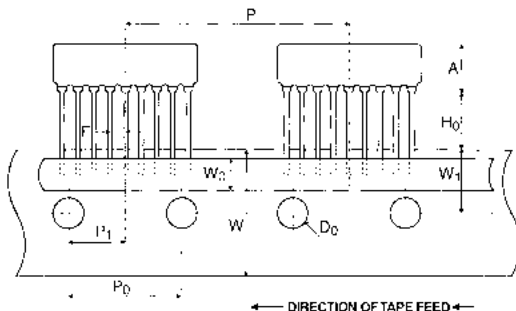
minimum ordered quantity

Type		Basic Unit/Bag	Quantity /Box	Taping
MRS	1/8-1/3	100	5000	—
SF	1/8	10	500	—
	1/4	10	500	—
	1/2	10	250	—
GS	1/4	—	500	—
	1/2	—	200	—
	1	—	150	—
	2	—	40	—
	3	—	30	—
	5	—	40	—
	7	—	20	—
	10	—	20	—
HPC	1/2	100	3000	O
	1	100	1000	O
	2	100	1000	—
	3	50	1000	—
	4, 5	25	500	—
LP	1/16	100	2000	O
	1/8	100	1000	O
SDT101	A	100	2500	O
	B	100	2500	—
SDT310		100	—	—
PSN•PV•PSO•PN•PWW•PAP		1	—	—
AFS		1	—	—
RW	1/2	20	1000	—
	1	20	1000	—
	2-7	20	500	—
	10	20	300	—
CR		100	1000	—
MRP	3 pin	100	3000	—
SA		200	1000	O

Please refer to product pages for taping quantities.

SIP resistor network taping—TBA style

For KOA type RKL & RKC networks with 4 to 9 pins



Leaded Resistors (TBA Style)

Type	Dimensions (mm)
A	RKL: 5.0 max.-RKC: 6.5 max.
P	25.4 ± 1.0
P ₀	12.7 ± 0.3
P ₁	6.35 ± 0.5
F	2.54 ± 0.3
W	18.0 ± 0.5
W ₀	6.0 ± 0.5
W ₁	9.0 ± 0.5
H ₀	7.0 ± 0.5
D ₀	4.0 ± 0.3

Discrete Components (continued)

Type	Basic Unit/Bag	Taping
PCF	1/2	0
	1	0
	2	0
RF	16~1	0
	2	0
RF25CC	2,000	0
MO (MOX)	1/2, 1	0
	2, 1/2U, 1U	0
	3	—
MOS (MOSX)	1/2~2	0
	3, 1U, 2U	0
	5	—
SPR (SPRX)	1/4	0
	1/2~2	0
	3, 1U, 2U	0
CW	5	—
	26	0
	28, 38	—
BPR	58	0
	108, 55, 77	—
	04~23	—
LR	BGR,BWR,BSR	WF
	5N	(1500) 500 (1500)
	7N	(700) 250 (700)
	10N	(800) 200 (800)
BGR,BWR,BSR (Straight type)	1	500 (700)
	2, 3	(1000)
	5	(700)
	7, 10	(500)
	15, 20	(100)
BGR, BSR (Lug terminal)	5~7, 10X, 10YS	200
	10Y, 10Z, 10H, 15~20	100
Z	16	2,000
	25	1,000
J1&Z, J1/4Z	1,000	0
JLT	—	0
RK92	1,000	—
RKL, RKC	3pin	1,000
	4~5pin	1,000
	6~9pin	1,000
	10pin	1,000
	11~17pin	1,000
	4~8pin	1,000
RKH	9pin	1,000
	10~13pin	1,000

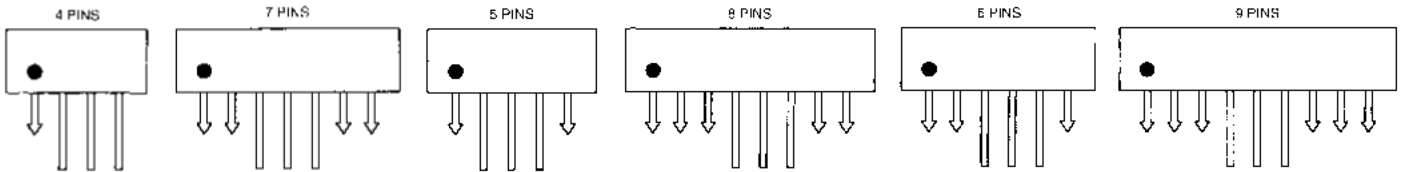
* () is flat container

Type	Basic Unit/Bag	Quantity /Box	Taping
MRS	1/8-1/3	100	5000
SF	1/8	10	500
	1/4	10	500
	1/2	10	250
GS	1/4	—	1000
	1/2	—	2000
	1	—	2000
	2	—	500
	3	—	500
	5	—	500
	7	—	250
LP	10	—	250
	12	—	250
	1/16	100	2000
SDT101	1/8	100	1000
	A	100	2500
SDT310	B	100	2500
	100	—	—
PSN+PV+PSC+PN+PWW+PAP	1	—	—
AFS	1	—	—
RW	1/2	20	1000
	1	20	1000
	2~7	20	500
	10	20	300
CR	100	1000	—
MRP	3 pin	100	3000
SA	200	1000	0

Please refer to product pages for taping quantities.

SIP resistor network taping—TPA style

For KOA TPA style taping



← DIRECTION OF TAPE FEED ←

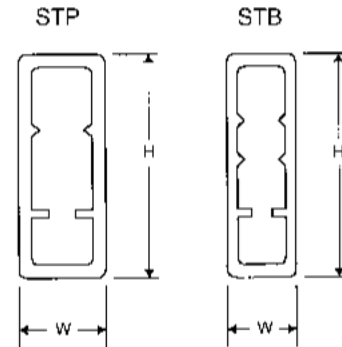
SIP resistor network packaging—STP & STB style packaging for stick (magazine) case

Resistor Networks - RKL & RKC

Type RKC, RKL	STP Pieces Per Stick		STB Pieces Per Stick		Sticks Per Box STP & STB
	RKC	RKL	RKC	RKL	
4 Pin	46	48	54	55	50
5 Pin	37	38	42	44	50
6 Pin	31	32	34	37	50
7 Pin	27	27	30	31	50
8 Pin	23	24	25	27	50
9 Pin	21	21	23	24	50
10 Pin	19	19	21	22	50
11 Pin	17	17	19	20	50
12 Pin	15	16	18	18	50
13 Pin	14	—	16	—	50
14 Pin	13	—	15	—	50

Dimensions - mm (Inches)

Type	Length	Width	Height	
			RKL	RKC
STP	508 (20.0)	5.0 (0.20)	11.0 (0.43)	13.4 (0.53)
STB	580 (22.8)	3.8 (0.15)	12.5 (0.49)	13.4 (0.53)



resistor networks

Resistor Color Code Chart

Color	Significant Figure	Multiplier	Tolerance
Silver	–	10 ⁻²	+10%
Gold	–	10 ⁻¹	+5%
Black	0	1	–
Brown	1	10	+1%
Red	2	10 ²	+2%
Orange	3	10 ³	–
Yellow	4	10 ⁴	–
Green	5	10 ⁵	+0.5%
Blue	6	10 ⁶	+0.25%
Violet	7	10 ⁷	+0.10%
Gray	8	10 ⁸	+0.05%
White	9	10 ⁹	–

* The 10⁻² Multiplier is not an "Industry Standard" Multiplier



NVD—metal oxide varistor disc type

Packaging Quantity Per Box

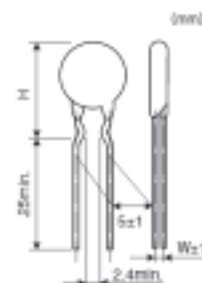
Type	Varistor Voltage (V)	Basic Unit/Bag	Box	
			Big	Small
D06U	022-470	200	—	2000
	022-470	100	—	2000
D10U	022-270	100	2000	—
	220-470	100	2000	—
	510-220	50	2000	—
D14U	810-1800	50	1000	—
	022-270	100	2000	—
	220-390	100	2000	—
	430-310	50	2000	—
D20U	620-780	50	1000	—
	820-1800	50	1000	—
	200-270	50	1000	—
	360-910	50	500	—

Type	Varistor Voltage (V)	Basic Unit/Bag	Box	
			Big	Small
NVF	220-650	50	2000	100

MH Style

Type	Varistor Voltage (V)	H Max. (mm)	Qty./bag (pcs)	Weight g/100pcs
NVDSUCDMH	18-470V	13.5	200	30-80
NVDFUCDMH	18-470V	14.5	100	90-140

Varistor Voltage (V)	W	Varistor Voltage (V)	W
22-55	1.7	240	1.2
60	1.9	270	1.5
82	1.9	330	1.7
100	1.8	360	1.9
130	1.8	390	2.0
150	2.1	430	2.2
200	1.9	470	2.4
220	1.1		

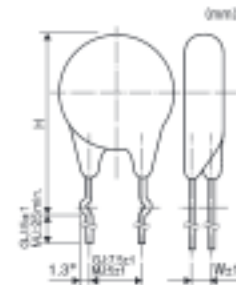


NVD—metal oxide varistor disc type (continued)

GJ, MJ Style

Type	Varistor Voltage (V)	H Max. (mm)	Qty./bag (pcs)	Weight g/100pcs
NVD19UCDGJ	22-470V	17.0	100	190-500
	22-390V	23.5	100	270-760
NVD14UCDGJ	430-470V	23.5	50	270-760
	22-470V	13.0	200	30-80
NVD67UCDMJ	22-470V	14.5	100	90-140
NVD19UCDMJ	22-270V	17.0	100	180-220

Varistor Voltage (V)	W (mm)				Varistor Voltage (V)	W (mm)			
	D05	D07	D10	D14		D05	D07	D10	D14
22-56	1.7	1.7	1.9	1.9	240	1.2	1.2	1.2	1.2
65	1.9	1.9	2.1	2.1	270	0.9	0.9	1.3	1.3
82	1.0	1.0	1.0	1.0	330	1.1	1.1	1.6	1.6
100	1.6	1.6	1.6	1.1	360	1.3	1.3	2.0	2.0
120	1.6	1.6	2.0	2.0	390	1.3	1.3	2.3	2.3
150	2.1	2.1	2.3	2.3	430	1.5	1.5	2.6	2.6
200	1.0	1.0	1.0	1.0	470	1.6	1.6	2.9	2.9
220	1.1	1.1	1.1	1.1					

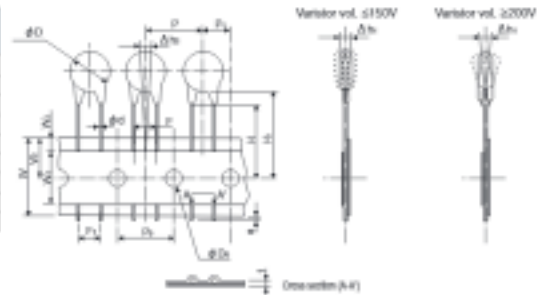


MT Style

Type	Varistor Voltage (V)	φ Dmax. (mm)	φ d (mm)	F (mm)	Pkg. AMMO (pcs)	Weight g/AMMO
NVD6UCDMT	22-47V	7.0	0.6	5±1	2000	1040-1640
	56, 85V	7.0	0.6	0±1	1500	1280
	82-150V	7.0	0.6	0±1	2000	1440
	200-470V	7.5	0.6	5±1	1000	790-960
NVD7UCDMT	22-47V	9.0	0.6	0±1	2000	2040-2440
	56, 85V	9.0	0.6	0±1	1500	1800
	82-150V	9.0	0.6	5±1	2000	2040
	200-470V	9.5	0.6	5±1	1000	1190-1590
NVD10UCDMT	22-150V	12.0	0.6	0±1	1000	1990-2390
	200, 270V	12.0	0.6	5±1	1000	2290
	240, 270V	12.0	0.6	5±1	500	1270

Type	Dimension	KOA Type	Dimension
φD	-	W ₂	3 Max.
ed	-	F	-
D ₀	4.0±0.2	F ₁	(5)
P	12.7±1.0	H	(17)
P ₀	12.7±0.3	H ₀	20 ⁽¹⁾
P ₁	6.35±1.3	Δh ₁	0±0.0
W	16.0 ⁽¹⁾	Δh ₀	0±1.3
W ₀	15	t	0.6±0.3
W ₁	9.0±0.5	e	less than 1.0

* Refer to the following lists for φD, outside dia. of product, ed, lead dia. and F, distance between leads.



GHT Style

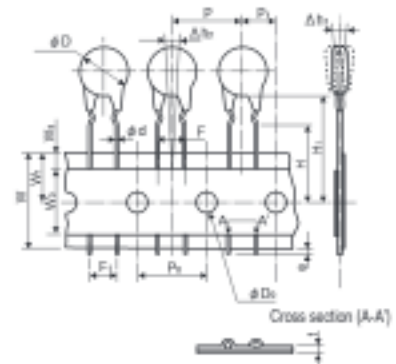
Type	Varistor Voltage (V)	φ Dmax. (mm)	φ d (mm)	F (mm)	Pkg. AMMO (pcs)	Weight g/AMMO
NVD10UCDGH	22-150V	12.0	0.8	7.5±1	2000	1980-2380
	200, 270V	12.0	0.8	7.5±1	1000	2280
	240, 270V	12.0	0.8	7.5±1	500	1260
	330-470V	12.5	0.8	7.5±1	500	1410-1660

MHT Style

Type	Varistor Voltage (V)	φ Dmax. (mm)	φ d (mm)	F (mm)	Pkg. AMMO (pcs)	Weight g/AMMO
NVD6UCDMHT	22-47V	7.0	0.6	5.0±1	1000	1270-1670
	56, 85V	7.0	0.6	5.0±1	1500	1380
	82-150V	7.0	0.6	0.0±1	2000	1470
	200-470V	7.5	0.6	0.0±1	1000	890-1900
NVD7UCDMHT	22-47V	9.0	0.6	5.0±1	2000	2070-2470
	56, 85V	9.0	0.6	0.0±1	1500	1800
	82-150V	9.0	0.6	0.0±1	2000	2070
	200-470V	9.5	0.6	5.0±1	1000	1260-1660
NVD10UCDMHT	22-220V	12.0	0.6	5.0±1	1000	2070-2470
	240, 270V	12.0	0.6	0.0±1	500	1280

Type	Dimension	KOA Type	Dimension
φD	-	W ₂	3 Max.
ed	0.6	F	0.0±1.0
D ₀	4.0±0.2	F ₁	(5)
P	12.7±1.0	H	16±0.5
P ₀	12.7±0.3	H ₀	(20)
P ₁	6.35±1.3	Δh ₁	0±0.0
W	16.0 ⁽¹⁾	Δh ₀	0±1.3
W ₀	15	t	0.6±0.3
W ₁	9.0±0.5	e	less than 1.0

* Refer to the following list for φD, outside dia.

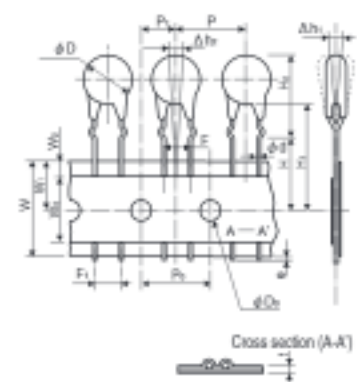


GJT, MJT Style

Type	Varistor Voltage (V)	φ Dmax. (mm)	φ d (mm)	F (mm)	H ₀ Max. (mm)	Pkg. AMMO (pcs)	Weight g/AMMO
NVD10UCDGJT	22-220V	12.0	0.8	7.5±1	—	1000	2070-2470
	240, 270V	12.0	0.8	7.5±1	—	500	1280
	330-470V	12.5	0.8	7.5±1	—	800	1420-1680
NVD6UCDMJT	22-47V	7.0	0.6	5±1	13.0	2000	1270-1670
	56, 85V	7.0	0.6	5±1	13.0	1500	1380
	100, 130V	7.0	0.6	5±1	13.0	2000	1470
	150V	7.5	0.6	5±1	13.0	2000	1470
	200-470V	7.5	0.6	5±1	13.0	1000	890-1900
NVD7UCDMJT	22-47V	9.0	0.6	5±1	14.5	2000	2070-2470
	56, 85V	9.0	0.6	5±1	14.5	1500	1800
	100, 130V	9.0	0.6	5±1	14.5	2000	2070
	150V	9.5	0.6	5±1	14.5	2000	2070
NVD10UCDMJT	200, 470V	9.5	0.6	5±1	14.5	1000	1260-1660
	22-220V	12.0	0.6	5±1	17.5	1000	2070-2470
NVD19UCDMJT	240-270V	12.0	0.6	5±1	17.5	500	1280

Type	Dimension	KOA Type	Dimension
φD	-	W ₂	3 Max.
ed	-	F	-
D ₀	4.0±0.2	F ₁	(5)
P	12.7±1.0	H	16±0.5
P ₀	12.7±0.3	H ₀	(20)
P ₁	6.35±1.3	Δh ₁	0±0.0
W	16.0 ⁽¹⁾	Δh ₀	0±1.3
W ₀	15	t	0.6±0.3
W ₁	9.0±0.5	e	less than 1.0

* Refer to the following list for φD, outside dia.

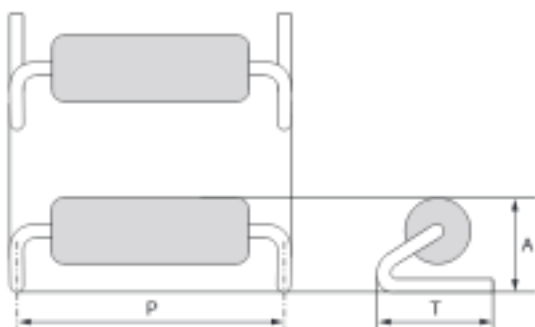


surface mounted device style lead forming

Ratings

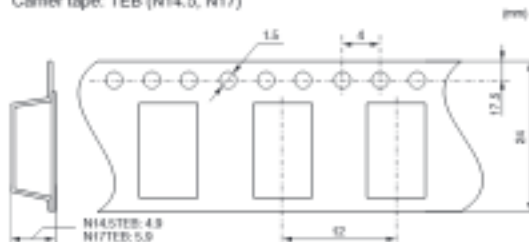
Type	Forming Type Name	Carrier Type	Forming Dimensions (mm)				Quantity/ Reel (pcs)	Weight (g)	
			P	T	A	d		Reel	NET/1000pcs
MOS (X) 1C	N14.5	TEB	14.5 ± 1	5.0 ± 0.5	4.2 ± 0.5	0.8	1000	700	350
MOS (X) 2C SPR(X) 2C RCR75C CW2C	N17	TEB	17.0 ± 1	6.0 ± 0.5	5.8 ± 0.5	0.8	1000	900	600
MOS (X) 3 SPR(X) 3 RCR100 CW3C	N20	TEG	20.0 ± 1	7.5 ± 1	6.5 ± 0.5	0.8	900	1,800	1,400

Forming Style

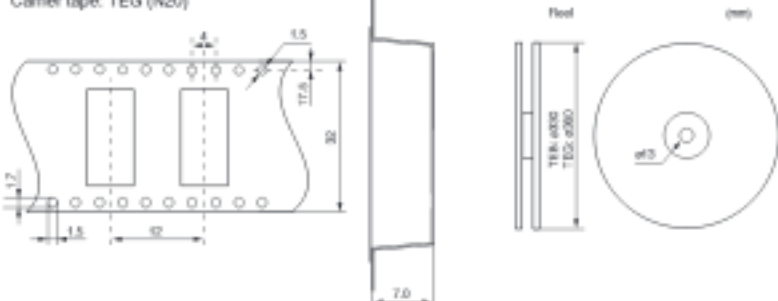


Packaging Specifications

Carrier tape: TEB (N14.5, N17)

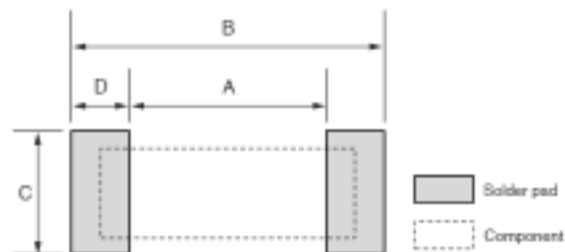


Carrier tape: TEG (N20)



Recommended Pad Dimensions

Type	Forming Type Name	Forming Dimensions (mm)			
		A	B	C	D
MOS (X) 1C	N14.5TEB	12.5	16.5	7.0	2.0
MOS (X) 2C SPR(X) 2C RCR75C CW2C	N17TEB	14.6	19.4	8.0	2.4
MOS (X) 3 SPR(X) 3 RCR100 CW3C	N20TEG	17.6	22.4	9.5	2.4



• Need a dedicated nozzle for automatic mounting. Please ask us before use.