

ROCKER SWITCH MR5 & MR5-R SERIES



RATING

- 6A 125VAC, 3A 250VAC (UL,CUL)
- 3A~250VAC μ T100/55 (VDE ENEC, CQC)
- 3A~250VAC T100/55 (KC)
- Initial contact resistance: 20m Ohms max
- Insulation resistance: 100M Ohms min. at 500VDC
- Dielectric strength: 1000 VAC (UL),3000VAC (VDE) 1min
- Electrical life: 6000 (UL); 10000 (VDE) cycles

FEATURES

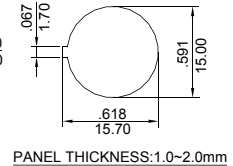
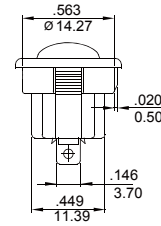
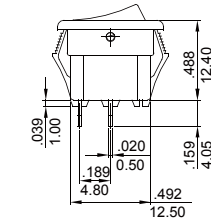
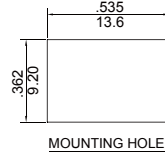
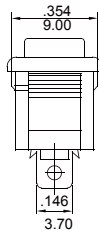
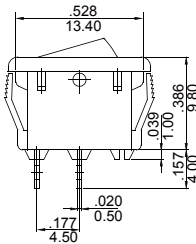
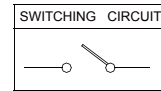
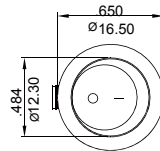
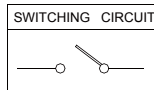
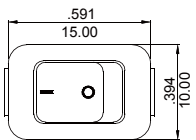
- Smallest AC rocker switch with highest rating in the market
- Appealing and patent outlook
- Safety approved internationally by UL&CUL in North America, VDE & ENEC in Europe, CQC & KC in Asia
- 9.2x13.6mm rectangle and dia.15mm round snap-in cutout size
- SPST, SPDT
- Meeting IEC60335-1 glow wire test ($750^{\circ}\text{C} \leq 2\text{SEC}$)

MR5 — 1 1 0 — F 2 — B B X

SERIES SYMBOL	POLE	FUNCTION	TERMINAL TYPE	ACTUATOR TYPE	MARKING TYPE	ILLUMINATED TYPE	BASE COLOR	ACTUATOR COLOR	SUFFIXES
MR5 SERIES	1 SINGLE POLE	1 ON-OFF 2 ON-ON 4 (ON)-OFF	0 SOLDER TAG	F FLAT R ROUND	1 HI LO 2 NO MARKING 3 ON OFF 4 ○ 5 ○ —	L ILLUMINATED N NO ILLUMINATED ROUND TYPE <input type="checkbox"/> NO ILLUMINATED TYPE	B BLACK W WHITE A GRAY	B BLACK A GRAY W WHITE *R RED *G GREEN	BLANK NUMBER OR LETTERS

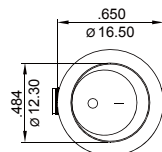
Note:

1. "*" can apply to PC material, illuminated type for round type and function ON-OFF only.
2. Suffixes (X): Custom code
3. The products options may be too many to be listed fully above, kindly consult our sales for further information.

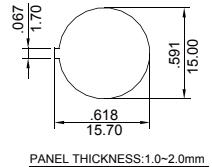
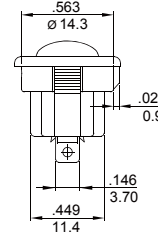
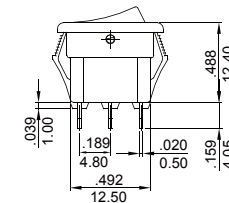


MR5-110-F5-XXX

MR5-110-R5N-XXX



SPST Pole on/off illuminated



MR5-110-R5L-XXX



ROCKER SWITCH MR5 SERIES (NEW)

RATING

- 6A 125VAC, 3A 250VAC μ T100/55 (UL, CUL, DEMKO, ENEC UL61058-1 TESTING)
- 6A DC30V MAX. μ T100/55 (UL, CUL, DEMKO, ENEC UL61058-1 TESTING)
- Initial contact resistance: 20m Ohms max
- Insulation resistance: 100M Ohms min. at 500VDC
- Dielectric strength: 3000VAC (UL61058-1) 1min
- Electrical life: 6000/10000 cycles

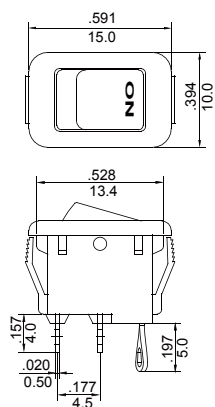
FEATURES

- New release: LED lamps type with rocker or paddle actuator; with laser craving icon or pc transparent actuator.
- Independent LED circuit
- Appealing and patent outlook
- 9.2x13.6mm rectangle
- SPST
- Safety approval testing

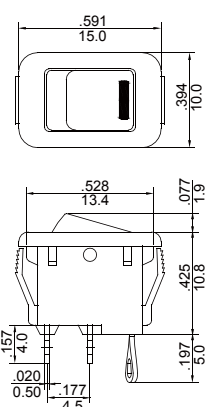
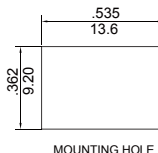
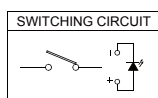
SERIES SYMBOL	POLE	FUNCTION	TERMINAL TYPE	ACTUATOR TYPE	MARKING TYPE	ILLUMINATED TYPE	BASE COLOR	ACTUATOR COLOR	SWITCH RATING & TEMPERATURE	SUFFIXES
MR5 SERIES	1 SINGLE POLE	1 ON-OFF	1 SOLDER TERMINAL 2 PC TERMINAL	F FLAT H HIGH	2 NO MARKING S SPECIAL	D DC ILLUMINATED N NO ILLUMINATED	B BLACK W WHITE A GRAY S SPECIAL (Other colors)	B BLACK W WHITE A GRAY S SPECIAL (Other colors)	A 6A-125V, 3A-250V T55 B 6A-125V, 3A-250V T100/55 C 6A DC30V T55 D 6A DC30V T100/55	BLANK NUMBER OR LETTERS

Note:

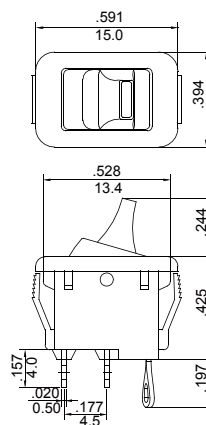
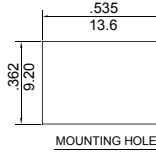
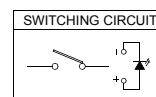
1. Illuminated type for function "ON-OFF" only.
2. LED Voltage 1.9~2.2V or Red, Orange, Yellow color; LED Voltage 2.8~3.2V for Blue, White, Green color.
3. The product options may be too many to be listed fully above, kindly consult our sales for further information.



MR5-111FSDBSB-006



MR5-111FSDBSB-008



MR5-111HSDBSB-001

