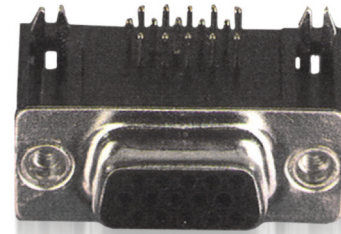


HIGH DENSITY DEE

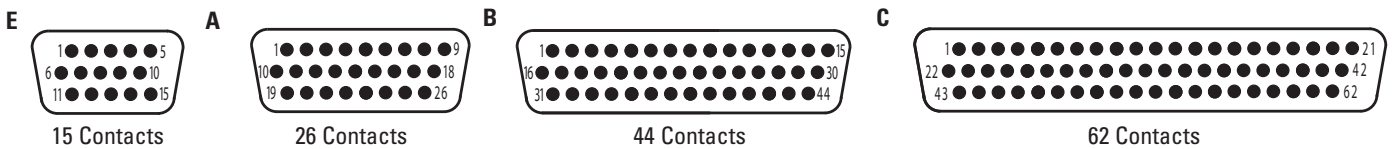
Increased contact density is provided in 4 industry standard shell sizes with a choice of 3 termination styles.

KEY FEATURES:

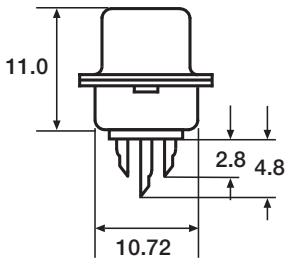
- Tinned and dimpled shell as standard - for enhanced electrical continuity and effective EMI/RFI shielding.
- Threaded inserts - enable quick assembly of mounting hardware to 90° p.c. versions.
- Solder bucket, straight p.c., 90°
- Optional screwlocks and boardlocks fitted to 90° p.c. versions - reduces assembly time.



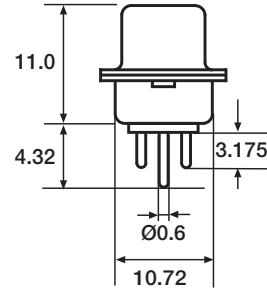
CONTACT ARRANGEMENT (VIEWED FROM MATING FACE OF MALE CONNECTOR)



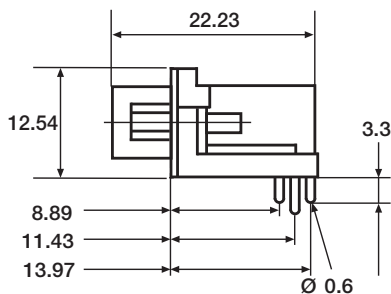
SOLDER BUCKET



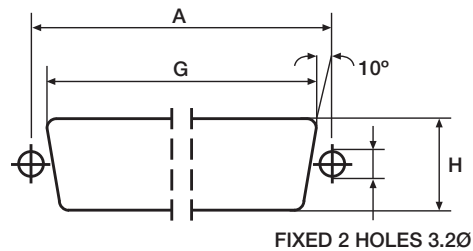
STRAIGHT P.C.



90° P.C.

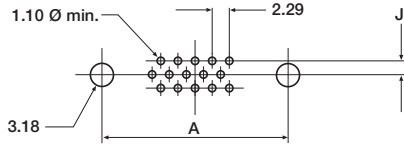


PANEL MOUNTING

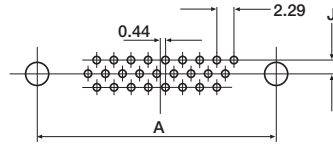


MOUNTING DETAIL

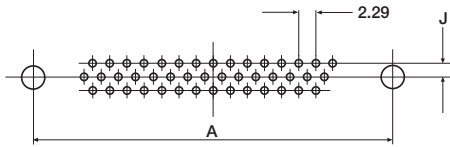
15 WAY



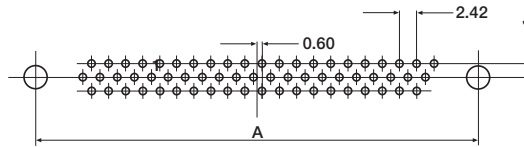
26 WAY



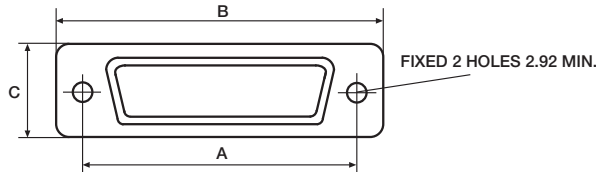
44 WAY



62 WAY

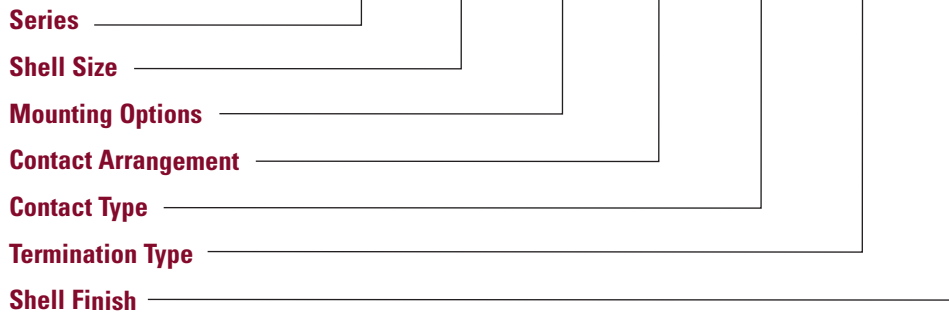


DIMENSIONS



Contact Arrangement	A crs.	B max.	C max.	G	H	Straight p.c.	90° p.c.
15	24.99	30.81	12.55	20.50	11.40	1.98	2.54
26	33.32	39.14	12.55	28.80	11.40	1.98	2.54
44	47.07	53.04	12.55	42.50	11.40	1.98	2.54
62	63.50	69.32	12.55	59.10	11.40	1.98	2.54

ORDERING INFORMATION:



Series

HD - High Density Dee

Shell Size

E, A, B, C

Mounting Options

No designator - All styles except 90° p.c.
X - Screwlocks fitted

Contact Arrangement

15, 26, 44, 62

Contact Type

P - Pin
S - Socket

Termination Type

No designator - Solder bucket
OL - Straight p.c.
N - 90° p.c. (board locks fitted as standard)

Shell Finish

T - Tin (socket only)
TD - Tinned & dimpled (plug only)

MECHANICAL / ELECTRICAL / CHARACTERISTICS:

Shell:

Steel plated tin

Insulator:

Glass filled thermoplastic rated UL94V-0

Contact:

Copper alloy plated hard acid gold

Mechanical operations:

100

Operating temperature:

-55°C to +105°C

Current - all contacts simultaneously:

at 70°C Tamb. 3A

Working voltage:

300Vd.c. or a.c. peak

Proof voltage:

1000Vd.c. or a.c. peak

Contact resistance:

10mΩmax.

Insulation resistance:

1000MΩmin.