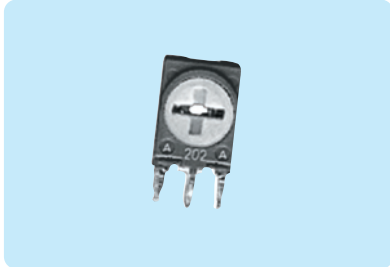


PIHER type N6 (6mm square)

A modern range of top or side adjust, single turn, carbon element trimming potentiometers in a range of values from 100Ω to 1MΩ. The devices feature cross slot adjustment from either side and a recessed rotor to eliminate accidental movement. Alternatively, a spindle actuator (available separately) permits finger adjustment. A polyester substrate provides enhanced stability and reliability, and is housed in an easy to handle rectangular dust proof enclosure with crimped terminals. With a wide variety of options also available, including taped and surface mount product, the N6 range offers an up-to-date approach to carbon trimmer design and installation.



- ◆ Carbon element
- ◆ Polyester substrate
- ◆ Easy to handle **dust proof enclosure**
- ◆ **Recessed cross slot rotor**
- ◆ Crimped terminals
- ◆ **Top or side adjust**, from either side
- ◆ **Single turn**
- ◆ Spindle actuator available

Specification

Electrical Characteristics

Resistance range	100Ω to 1MΩ
Resistance tolerance	±30%
End resistance	≤2% or 10Ω (whichever is greater)
Equivalent noise resistance	≤5%
Resolution	Infinite
Effective travel	245° ±25°

Environmental Characteristics

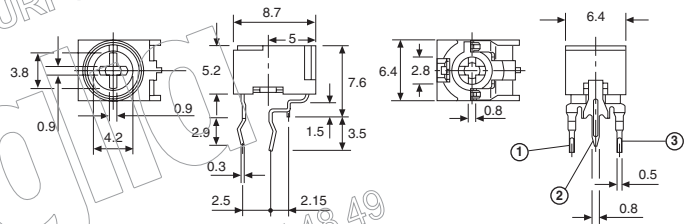
Power rating	0.1W at 50°C max.
Max. voltage	100Vdc
Temperature range	-25°C to +70°C
Temperature coefficient	±300ppm/°C
Humidity	95% RH 500 hours at 40°C
total resistance shift	5% max.
Vibration	20G 2 hours at 10Hz to 50Hz
total resistance shift	2% max.
Load life	1000 hours 0.1W at 50°C
total resistance shift	10% max.
contact resistance variation	10% max.
Rotational life	100 cycles (10-15 cycles/minute)
total resistance shift	3% max.
contact resistance variation	3% max.

Physical Characteristics

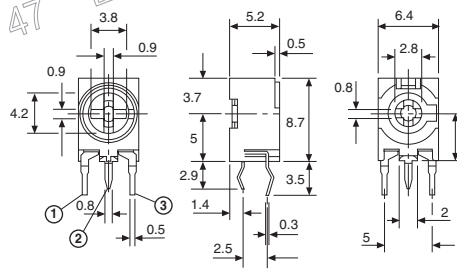
Operating torque	0.2 to 3Ncm
Stop torque	7.5Ncm min.
Wiper positioning	50% nominal
Flammability	UL94V-0

Dimensions (mm)

N6L25 - Top Adjust, Horizontal Mounting

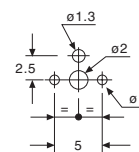


N6S25 - Side Adjust, Vertical Mounting

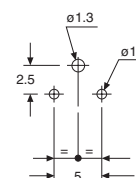


Footprint

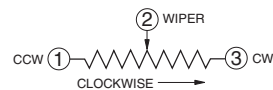
Top Adjust



Side Adjust



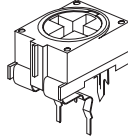
Circuit Diagram



For the very latest information and news on the full range of PIHER products available from Anglia, visit our website :
www.anglia.com/piher
 Alternatively, contact our Sales Desk to discuss your specific requirements.

PIHER type N6 (6mm square)

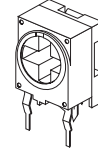
N6L25



Top Adjust, Horizontal Mounting

Value (Ω)	anglia Order Code	
	N6L25	
100R	030101L	
220R	030221L	
470R	030471L	
1K	030102L	
2K2	030222L	
4K7	030472L	
10K	030103L	
22K	030223L	
47K	030473L	
100K	030104L	
220K	030224L	
470K	030474L	
1M	030105L	

N6S25



Side Adjust, Vertical Mounting

Value (Ω)	anglia Order Code	
	N6S25	
100R	030101S	
220R	030221S	
470R	030471S	
1K	030102S	
2K2	030222S	
4K7	030472S	
10K	030103S	
22K	030223S	
47K	030473S	
100K	030104S	
220K	030224S	
470K	030474S	
1M	030105S	

TECHNICAL DATA
FOR REFERENCE PURPOSES ONLY

Anglia

01945 47 47 47 01945 47 48 49

Wide variety of options available :

- Taped product
- Other terminal styles, including SMD

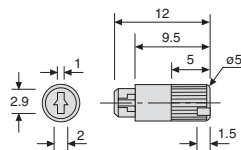
Please contact our Sales Desk for details

Spindle Actuator type 6133



Moulded actuator which fits into the above trimmers. Colour black.

Dimensions (mm)



Actuator Style	Type	anglia Order Code
		Black
Spindle (9.5mm length)	6133	030017

PIHER type PT6 (6mm round)

A range of top or side adjust, single turn, carbon element trimming potentiometers in a range of values from 220Ω to 4.7MΩ, with a power handling capability of 0.1W. The devices are manufactured with a polyester substrate for enhanced stability and reliability, housed in a 6mm round dust proof enclosure with crimped terminals. Adjustment may be made from either side via a cross slot rotor, by means of a screwdriver or a thumbwheel actuator (available separately).



- ◆ Carbon element
- ◆ Polyester substrate
- ◆ 6mm round dust proof enclosure
- ◆ Cross slot rotor
- ◆ Crimped terminals
- ◆ Top or side adjust, from either side
- ◆ Single turn
- ◆ Thumbwheel actuators available

Specification

Electrical Characteristics

Resistance range	220Ω to 4.7MΩ
Resistance tolerance	
220Ω to 1MΩ	±20%
>1MΩ	±30%
Equivalent noise resistance	≤3% or 3Ω (whichever is greater)
Resolution	Infinite
Effective travel	220° ±20°

Environmental Characteristics

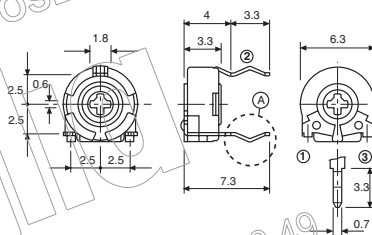
Power rating	0.1W at 40°C max.
Max voltage	100Vdc
Temperature range	-25°C to +70°C
Temperature coefficient	±300ppm/°C
Humidity	95% RH 500 hours at 40°C
total resistance shift	5% max.
Vibration	20G 2 hours at 10Hz to 50Hz
total resistance shift	2% max.
Load life	1000 hours 0.1W at 40°C
total resistance shift	5% max.
contact resistance variation	5% max.
Rotational life	200 cycles (10-15 cycles/minute)
total resistance shift	3% max.
contact resistance variation	3% max.

Physical Characteristics

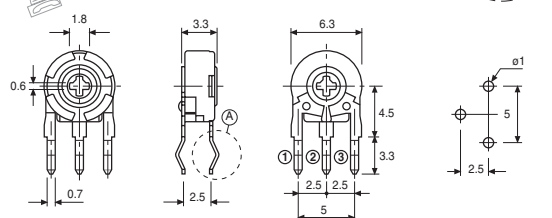
Operating torque	0.2 to 2Ncm
Stop torque	4Ncm min.
Wiper positioning	Set at CCW end
Flammability	UL94V-0

Dimensions (mm)

PT6KV - Top Adjust, Horizontal Mounting

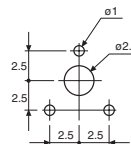


PT6KH - Side Adjust, Vertical Mounting

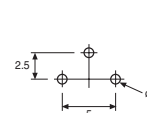


Footprint

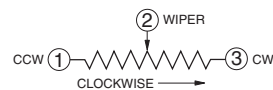
Top Adjust



Side Adjust



Circuit Diagram



For the very latest information and news on the full range of PIHER products available from Anglia, visit our website :

www.anglia.com/piher

Alternatively, contact our Sales Desk to discuss your specific requirements.

PIHER type PT6 (6mm round)
PT6KV

Top Adjust, Horizontal Mounting

Value (Ω)	anglia Order Code	
	PT6KV	
220R	034221Z	
470R	034471Z	
1K	034102Z	
2K2	034222Z	
4K7	034472Z	
10K	034103Z	
22K	034223Z	
47K	034473Z	
100K	034104Z	
220K	034224Z	
470K	034474Z	
1M	034105Z	
2M2	034225Z	
4M7	034475Z	

PT6KH

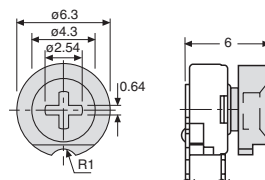
Side Adjust, Vertical Mounting

Value (Ω)	anglia Order Code	
	PT6KH	
220R	039221Z	
470R	039471Z	
1K	039102Z	
2K2	039222Z	
4K7	039472Z	
10K	039103Z	
22K	039223Z	
47K	039473Z	
100K	039104Z	
220K	039224Z	
470K	039474Z	
1M	039105Z	
2M2	039225Z	
4M7	039475Z	

PIHER • Other configurations available
Please contact our Sales Desk for details

Thumbwheel Actuators type 5155

Moulded actuators which fit into the above trimmers. Choice of colour.

Dimensions (mm)


Actuator Style	Type	anglia Order Code		
		White	Black	Red
Thumbwheel	5155	037043	037044	037045