

Feature

1. One hole rod type
2. Excellent heat resistance.
3. Available in various sizes & materials
4. High reliability.

Application

E.M.I. Suppression on round cable...

1. Computer and peripheral products
2. Consumer electronic products
3. Communication electronic products
4. Measuring instruments

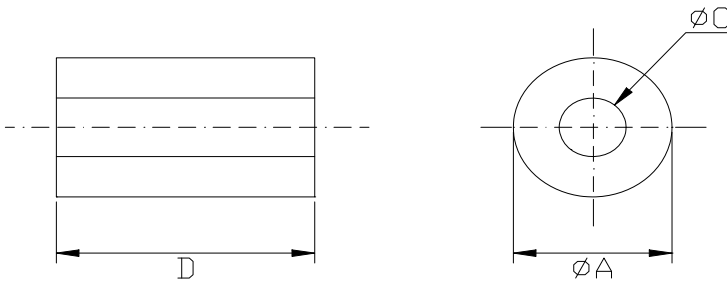


Product Identification

RH **10.5** x **20** x **5.5**
1 **2** **3** **4**

1. Series name.
2. Dia.A.
3. Dia.D.
4. Dia.C.

Configurations



Unit: mm

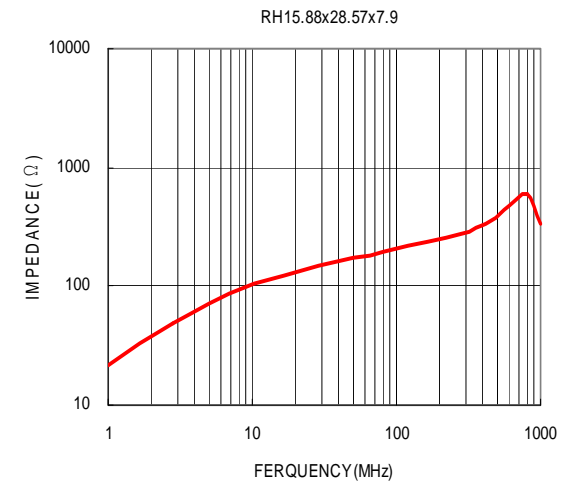
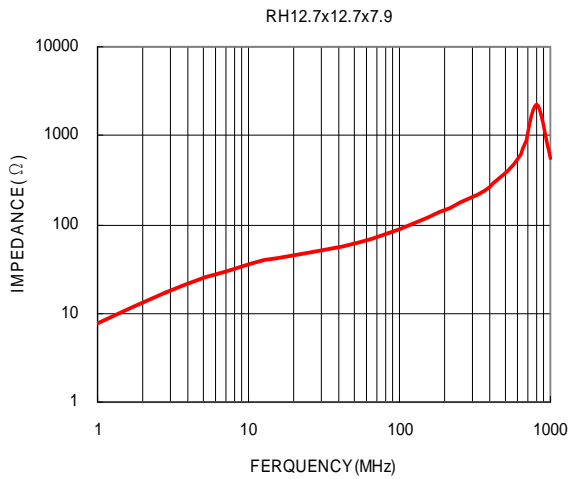
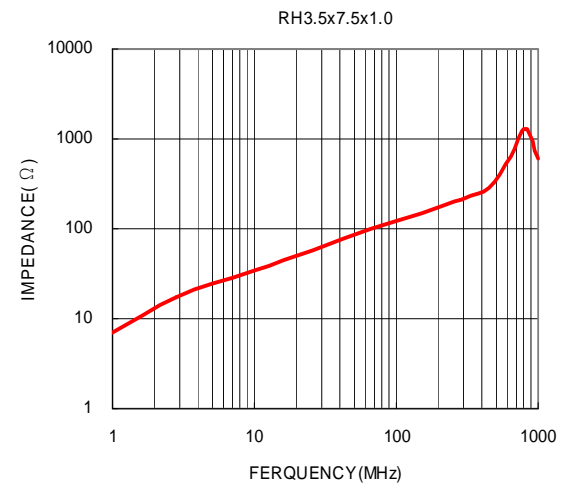
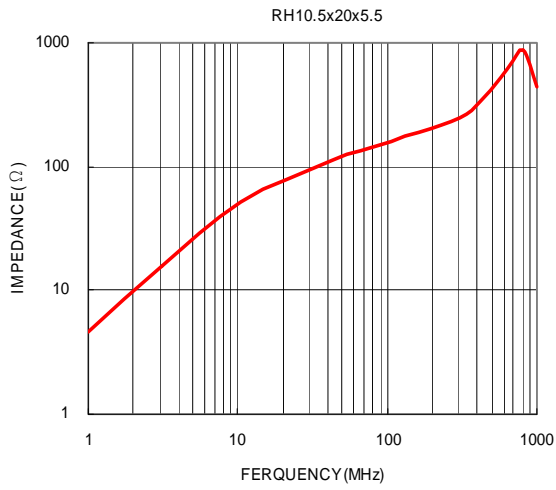
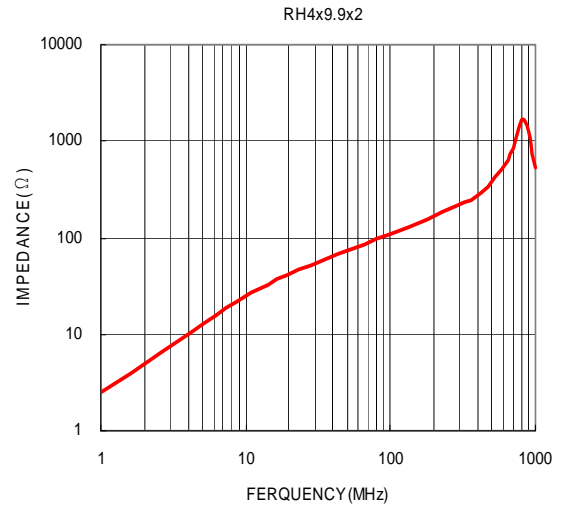
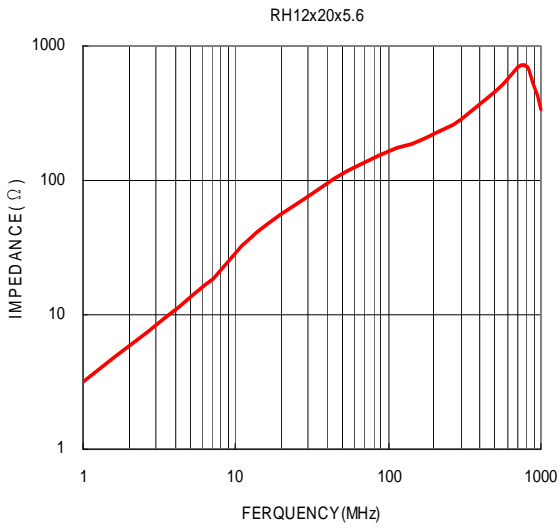
Electrical Characteristics / RH Series

Part Number	DIMENSIONS (UNIT : mm)			IMPEDANCE (Ω)	
	A	D	C	25MHZ	100MHZ
RH 4 x 5 x 2	4.00 ± 0.2	5.0 ± 0.3	2.00 ± 0.15	21	40
RH 4 x 9.9 x 2	4.00 ± 0.2	10.0 ± 0.4	2.00 ± 0.15	35	80
RH 5.08 x 6.4 x 2.4	5.08 ± 0.3	6.4 ± 0.3	2.40 ± 0.15	25	45
RH 6 x 6 x 3	6.0 ± 0.3	6.0 ± 0.3	3.0 ± 0.2	36	50
RH 6 x 10 x 3	6.0 ± 0.3	10.0 ± 0.4	3.0 ± 0.2	42	85

Electrical Characteristics / RH Series

Part Number	DIMENSIONS (UNIT : mm)			IMPEDANCE (Ω)	
	A	D	C	25MHZ	100MHZ
RH 7.52 x 7.54 x 2.39	7.52 ± 0.3	7.54 ± 0.3	2.39 ± 0.2	45	75
RH 7.8 x 12.5 x 4	7.8 ± 0.3	12.5 ± 0.4	4.0 ± 0.2	52	95
RH 8 x 19.2 x 3	8.0 ± 0.3	19.2 ± 0.5	3.0 ± 0.2	65	155
RH 8 x 20 x 3.5	8.0 ± 0.3	20.0 ± 0.5	3.5 ± 0.2	65	150
RH 9.5 x 9.5 x 5.2	9.5 ± 0.3	9.5 ± 0.4	5.2 ± 0.3	42	75
RH 9.53 x 12.7 x 4.75	9.53 ± 0.3	12.7 ± 0.4	4.75 ± 0.2	53	95
RH 10.5 x 20 x 5.5	10.5 ± 0.3	20.0 ± 0.5	5.5 ± 0.3	90	130
RH 12 x 15 x 7.3	12.0 ± 0.4	15.0 ± 0.4	7.3 ± 0.3	45	85
RH 12 x 15.5 x 5.6	12.0 ± 0.4	15.5 ± 0.4	5.6 ± 0.3	56	95
RH 12 x 20 x 5.6	12.0 ± 0.4	20.0 ± 0.5	5.6 ± 0.3	100	200
RH 12.7 x 12.7 x 7.9	12.7 ± 0.4	12.7 ± 0.4	7.9 ± 0.3	45	65
RH 12.7 x 15 x 7.9	12.7 ± 0.4	15.0 ± 0.4	7.9 ± 0.3	45	105
RH 14.22 x 15 x 6.35	14.22± 0.4	15.0 ± 0.4	6.35 ± 0.3	45	95
RH 14.22 x 28 x 6.35	14.22± 0.4	28.0 ± 1.0	6.35 ± 0.3	135	240
RH 14.22 x 23.5 x 8	14.22± 0.4	23.5 ± 0.8	8.0 ± 0.3	85	108
RH 15.24 x 28 x 8	15.24 ± 0.4	28.0 ± 1.0	8.0 ± 0.3	110	210
RH 15.65 x 28.5 x 7	15.65 ± 0.4	28.5 ± 1.0	7.0 ± 0.3	150	260
RH 16 x 17.5 x 4.3	16.0 ± 0.4	17.5 ± 0.5	4.3 ± 0.2	145	255
RH 16 x 17 x 9	16.0 ± 0.4	17.0 ± 0.5	9.0 ± 0.3	65	155
RH 17 x 28 x 9.5	17.0 ± 0.5	28.0 ± 1.0	9.5 ± 0.3	110	190
RH 17.5 x 12.7 x 9.5	17.5 ± 0.5	12.7 ± 0.4	9.5 ± 0.3	45	90
RH 17.5 x 13.5 x 9.5	17.5 ± 0.5	13.5 ± 0.4	9.5 ± 0.3	55	90
RH 17.5 x 28.5 x 9.5	17.5 ± 0.5	28.5 ± 1.0	9.5 ± 0.3	110	189
RH 17.5 x 35 x 9.5	17.5 ± 0.5	35.0 ± 1.0	9.5 ± 0.3	120	225
RH 17.5 x 28.5 x 10	17.5 ± 0.5	28.5 ± 1.0	10.0± 0.3	95	125
RH 17.5 x 28.5 x 10.7	17.5 ± 0.5	28.5 ± 1.0	10.7 ± 0.3	90	167
RH 18.5 x 28.5 x 11	18.5 ± 0.5	28.5 ± 1.0	11.0 ± 0.40	95	180
RH 21 x 11.9 x 13.2	21.0 ± 0.5	11.9 ± 0.4	13.2 ± 0.40	65	95

Electrical Curve / RH Series



Electrical Curve / RH Series

