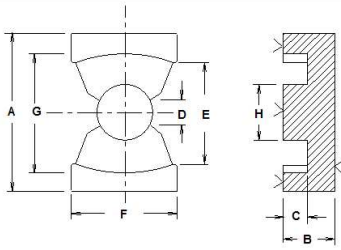


TSC Ferrite International



TSC FERRITE INTERNATIONAL PQ CORE DIMENSIONS

PART #	A		B		C		D		E		F		G		H		
	in	mm	in	mm	in	mm	in	mm	in	mm	in	mm	in	mm	in	mm	
PQ2016	20-16-00	0.837 +/-0.017	21.26 +/-0.43	0.319 +/-0.005	8.10 +/-0.13	0.203 +/-0.007	5.16 +/-0.19	0.158 MIN	4.01 MIN	0.472 MIN	11.99 MIN	0.551 +/-0.011	14.00 +/-0.28	0.709 +/-0.016	18.01 +/-0.41	0.348 +/-0.007	8.84 +/-0.18
PQ2020	20-20-00	0.837 +/-0.017	21.26 +/-0.43	0.398 +/-0.005	10.11 +/-0.13	0.282 +/-0.007	7.16 +/-0.19	0.258 MIN	6.55 MIN	0.472 MIN	11.99 MIN	0.551 +/-0.011	14.00 +/-0.28	0.709 +/-0.016	18.01 +/-0.41	0.348 +/-0.007	8.84 +/-0.18
PQ2620	26-20-00	1.073 +/-0.021	27.25 +/-0.55	0.397 +/-0.005	10.08 +/-0.13	0.226 +/-0.008	5.74 +/-0.21	0.236 MIN	5.99 MIN	0.610 MIN	15.49 MIN	0.748 +/-0.015	19.00 +/-0.38	0.886 +/-0.018	22.50 +/-0.45	0.472 +/-0.009	11.99 +/-0.24
PQ2625	26-25-00	1.073 +/-0.021	27.25 +/-0.55	0.487 +/-0.005	12.37 +/-0.13	0.317 +/-0.008	8.05 +/-0.21	0.236 MIN	5.99 MIN	0.610 MIN	15.49 MIN	0.748 +/-0.015	19.00 +/-0.38	0.886 +/-0.018	22.50 +/-0.45	0.472 +/-0.009	11.99 +/-0.24
PQ3220	32-20-00	1.300 +/-0.026	33.02 +/-0.66	0.405 +/-0.005	10.29 +/-0.13	0.226 +/-0.008	5.74 +/-0.22	0.216 MIN	5.49 MIN	0.748 MIN	19.00 MIN	0.866 +/-0.017	22.00 +/-0.44	1.083 +/-0.022	27.51 +/-0.55	0.53 +/-0.011	13.46 +/-0.27
PQ3230	32-30-00	1.3 +/-0.026	33.02 +/-0.66	0.597 +/-0.005	15.16 +/-0.13	0.419 +/-0.009	10.64 +/-0.22	0.216 MIN	5.49 MIN	0.748 MIN	19.00 MIN	0.866 +/-0.017	22.00 +/-0.44	1.083 +/-0.022	27.51 +/-0.55	0.53 +/-0.011	13.46 +/-0.27
PQ3535	35-35-00	1.422 +/-0.028	36.12 +/-0.72	0.684 +/-0.005	17.37 +/-0.13	0.492 +/-0.009	12.50 +/-0.22	0.235 MIN	5.97 MIN	0.925 MIN	23.50 MIN	1.024 +/-0.020	26.01 +/-0.52	1.26 +/-0.025	32.00 +/-0.64	0.565 +/-0.011	14.35 +/-0.29
PQ4040	40-40-00	1.633 +/-0.033	41.48 +/-0.83	0.782 +/-0.005	19.86 +/-0.13	0.581 +/-0.009	14.76 +/-0.23	0.250 MIN	6.35 MIN	1.102 MIN	27.99 MIN	1.102 +/-0.022	27.99 +/-0.56	1.457 +/-0.029	37.01 +/-0.74	0.587 +/-0.012	14.91 +/-0.30

TSC FERRITE INTERNATIONAL PQ CORE EFFECTIVE CORE SET PARAMETERS							INDUCTANCE INDEX AL nH/N ²		
PART #	MAGNETIC PATH LENGTH	EFFECTIVE CORE AREA	EFFECTIVE CORE VOLUME	WINDOW AREA	POWER HANDLING CAPABILITY INDEX	CORE SET WEIGHT	ASTM Material Type		
	Le cm	Ae cm ²	Ve cm ³	Wa cm ²	WaAe cm ⁴	GRAMS	ASTM P7099 ASTM P5099	ASTM P7070	ASTM P8040 ASTM F3000 P5025-100
20-16-00	3.74	0.62	2.31	0.47	0.29	14.1	TSF-BOOST TSF-7099 TSF-5099 +/-25%	TSF-7070 +/-20%	TSF-8040 TSF-50ALL Flat Line +/-25%
20-20-00	4.54	0.62	2.79	0.66	0.41	16.9	2,720	3,025	4,120
26-20-00	4.63	1.19	5.49	0.6	0.72	32.3	5,675	6,390	7,750
26-25-00	5.55	1.18	6.53	0.85	1	37.9	4,690	5,290	6,550
32-20-00	5.55	1.7	9.42	0.81	1.37	45.7	7,215	7,220	9,430
32-30-00	7.46	1.61	11.97	1.49	2.41	60.8	4,760	5,360	6,780
35-35-00	8.79	1.96	17.26	2.21	4.32	77.7	4,915	5,695	7,010
40-40-00	10.19	2.01	20.45	3.26	6.55	105.6	4,640	5,310	6,320