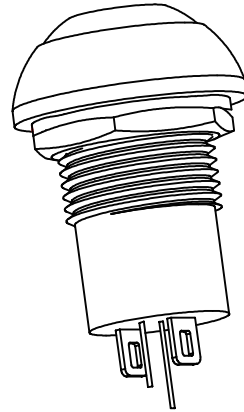
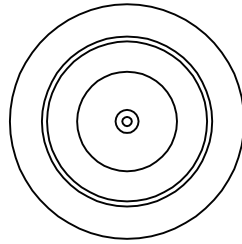
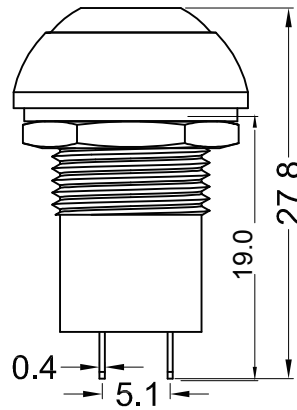
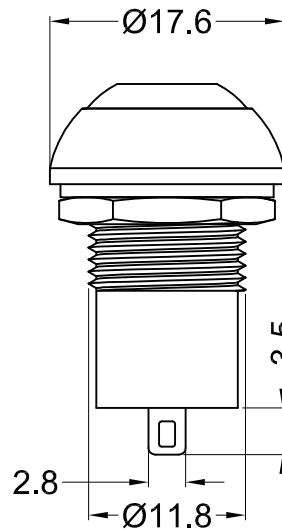


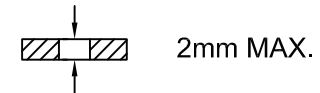
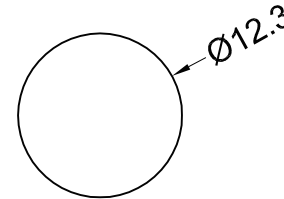
佳尼有限公司 CANAL COMPONENTS INC



Rating: 400mA 32VAC \ 100mA 50VDC
 125mA 125VAC
 Contact Resistance: 100mΩ MAX.
 Insulation Resistance: 1GΩmin.at 500VDC
 Dielectric Strength: 1000 VAC rms.
 Electrical life: 500,000 cycles
 Operating Temperature: -30°C~85°C
 Operating Pressure: 5.5N±1.5N
 Operating Stroke: 1.5~2.5mm
 Protection Grade: IP65
 Soldering: 300°C max. for 5 seconds
 Lamp Type: Point Lamp (LED)
 Lamp Life: 50000H
 Function: OFF-ON

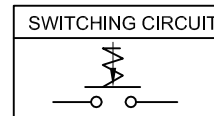


CUT-OUT



MATERIAL:

Cover: Nylon66, UL rated: 94V-2 min
 Base: Nylon66, UL rated: 94V-2 min
 Terminal: Brass,



N	Y	G	R	W	U	◆
无灯	黄色	绿色	红色	白色	蓝色	灯颜色
T	Y	G	R	W	A	■
透明	黄色	绿色	红色	白色	灰色	柄颜色

NOTE: TOLERANCES UNLESS OTHERWISE SPECIFIED : ± .012 (mm),
 0.3

REVISION	DESCRIPTION	REVISED BY	TOLERANCES .x .xx		ANGLE 1/2°	UNIT	mm	PART NAME	SPEC DRAWING	DWG NO
△			DRAWN BY	張俊雄	DESIGNED BY	王豐文	SCALE			WS2895A
△			CHECKED BY		APPROVED BY		DATE	2015.10.20	PART NO	
△	2015.10.20 首次出圖	張俊雄								