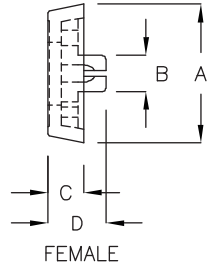


#### 腳墊 PLASTIC FOOT



MALE MATERIAL: NYLON 66(UL)  
 FEMALE MATERIAL: TPR(UL)  
 FLAME CLASS: 94V-0  
 COLOR: BLACK,GRAY  
 INCLUDE PIN  
 \*附 PIN

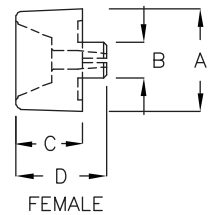


PART NO	CHASSIS THICKNESS	A	B HOLE IN CHASSIS	C	D	PACKAGE
GL-20M	0.8	∅20.0	∅5.3	5.2	8.4	500

#### 腳墊 PLASTIC FOOT



MALE MATERIAL: PP  
 FLAME MATERIAL: EVA  
 COLOR: BLACK,GRAY  
 INCLUDE PIN  
 \*附 PIN

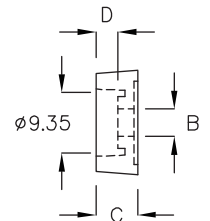


PART NO	CHASSIS THICKNESS	A	B HOLE IN CHASSIS	C	D	PACKAGE
GL-23D	0.8~1.6	∅23.0	∅8.2	15.0	20.5	200
GL-23F	0.8~1.6	∅23.0	∅8.0	23.0	28.5	

#### 腳墊 PLASTIC FOOT



MATERIAL: TPR(UL)  
 FLAME CLASS: 94V-0  
 COLOR: BLACK  
 MUST BE FASTENED BY M3 SCREW



PART NO	A	B	C	D	PACKAGE
GL-03	∅15.0	∅4.2	6.0	3.2	500