

TYPE 57P

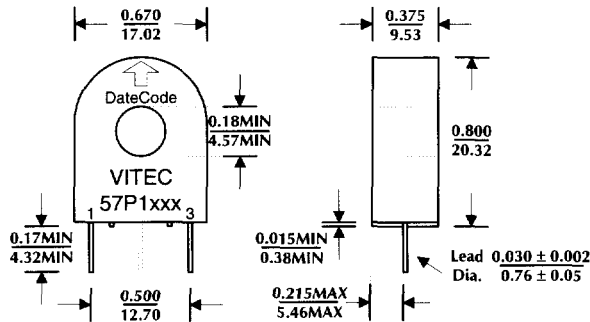
CURRENT SENSE INDUCTORS

FEATURES

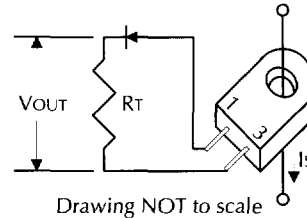
- Designed for use with switching power supplies
- Frequency range above 50 KHz
- Low cost epoxy encapsulated construction.
- Rated 20 Amp peak sense current
- Materials meet flammability requirement of UL94V-0.
- Manufactured to UL recognized 130 insulation system. UL file# E107307.
- Bauart approval, license# 9306 18725 007
- Certified to EN 60950/DIN VDE 0805



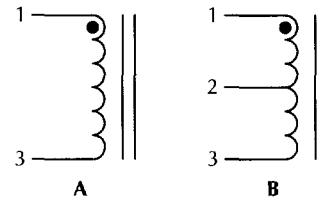
DRAWING



TYPICAL APPLICATION CIRCUIT



SCHEMATICS



ELECTRICAL CHARACTERISTICS @ +25°C

Part Number	Turns	Inductance (1-3)	Inductance Test Volts	DCR (1-3)	Terminating Resistance*	Unipolar Rating	Schematic
		mH MIN	Volt TYP	Ohm MAX	Ohm TYP	Amp rRsec MAX	
57P1686	50	5.00	0.50	0.70	50	150	A
57P1687	100	20.00	1.00	1.40	100	300	A
57P1688	200	80.00	2.00	4.50	200	600	A
57P1820	300	180.00	3.00	11.00	300	900	A
57P1821	400	300.00	4.00	20.00	400	1200	A
57P1717	50CT	5.00	0.50	0.70	50**	150	B
57P1718	100CT	20.00	1.00	1.40	100**	300	B
57P1719	200CT	80.00	2.00	4.50	200**	600	B
57P1920	300CT	180.00	3.00	11.00	300**	900	B
57P1921	400CT	300.00	4.00	20.00	400**	1200	B

Notes: *For Voltage Across Terminating Resistance of 1 Volt per Ampere
 **For Center Tapped Units, Terminating Resistance for Each Half of Winding is 1/2 the Listed Value
 Test Frequency 10 KHz Request TUV/VDE Certificates When Ordering