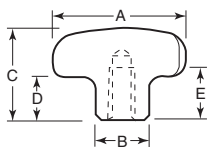




ANTIMICROBIAL KNOBS, HANDLES & HAND WHEELS

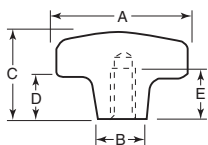
These knobs, handles and hand wheels are powder coated with an inorganic antimicrobial compound which helps prevent the spreading of bacteria, mold and mildew throughout the work environment. The compound combines silver with an inorganic ceramic that permits a continuous, controlled release of ionic silver over an extended time period. Cleaning is not eliminated with antimicrobial coating, but it does provide additional defense against microorganisms. Antimicrobial coating is activated by touch and will last 7-15 years depending on cleaning methods used. Designed for use in the medical, pharmaceutical, food industries and other areas subject to rigorous sanitation laws. Approved by the EPA, FDA and NSF. Coating color is white.

White Antimicrobial Lobed Knobs Stainless Steel Inch



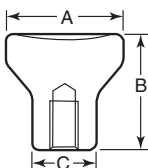
Item No.	A	B	C	D	E	Thread	Pack Qty.	Bulk Pack Qty.
AM-20	1.25	.47	.78	.39	.47	1/4-20	1	50
AM-21	1.57	.55	.98	.51	.59	5/16-18	1	50
AM-22	1.96	.71	1.25	.66	.71	3/8-16	1	50
AM-23	2.48	.78	1.57	.82	.86	1/2-13	1	50

White Antimicrobial Lobed Knobs Stainless Steel Inch



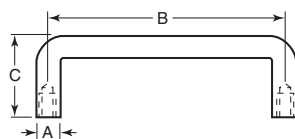
Item No.	A	B	C	D	E	Thread	Pack Qty.	Bulk Pack Qty.
AM-24	1.25	.47	.79	.39	.47	1/4-20	1	50
AM-25	1.57	.55	.98	.51	.59	5/16-18	1	50
AM-26	1.96	.71	1.26	.67	.71	3/8-16	1	50
AM-27	2.48	.79	1.65	.83	.87	1/2-13	1	50

White Antimicrobial Pull Knobs Stainless Steel Inch



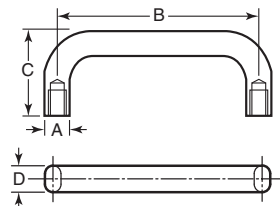
Item No.	A	B	C	Thread	Depth	Pack Qty.	Bulk Pack Qty.
AM-33	.827	.827	.47	10-24	.39	1	50
AM-34	.984	.984	.55	1/4-20	.39	1	50
AM-35	1.250	1.250	.71	5/16-18	.55	1	50

White Antimicrobial Pull Handles Stainless Steel Inch



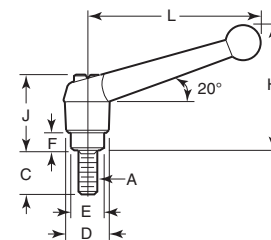
Item No.	A	B	C	Thread	Min. Depth	Pack Qty.	Bulk Pack Qty.
AM-36	5/16	3	1 1/2	10-32	3/8	1	50
AM-37	5/16	3 1/2	1 1/2	10-32	3/8	1	50
AM-38	5/16	5	1 1/2	10-32	3/8	1	50

White Antimicrobial Pull Handles Stainless Steel Inch



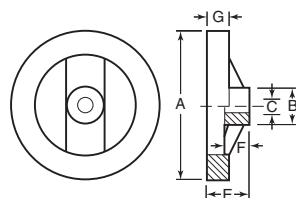
Item No.	A	B	C	D	Thread	Min. Depth	Pack Qty.	Bulk Pack Qty.
AM-39	3/8	3	1 1/2	5/8	10-32	3/8	1	50
AM-40	3/8	4	1 1/2	5/8	10-32	3/8	1	50
AM-41	3/8	5	1 1/2	5/8	10-32	3/8	1	50

White Antimicrobial Adjustable Handles Stainless Steel Inch



Item No.	A	C	D	E	F	H	J	L	Pack Qty.	Bulk Pack Qty.
AM-51	5/16-18	.78	.71	.53	.25	1.81	1.14	2.56	1	10
AM-54	5/16-18	2.36	.71	.53	.25	1.81	1.14	2.56	1	10
AM-56	3/8-16	1.54	.84	.62	.39	2.28	1.47	3.15	1	10

White Antimicrobial Hand Wheels Stainless Steel Inch



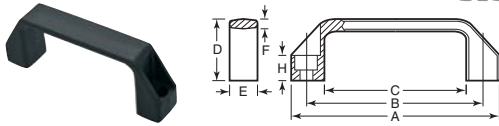
Item No.	A	B	C	E	F	G	Pack Qty.	Bulk Pack Qty.
AM-42	4	1.25	.375	1.77	.812	.750	1	10
AM-43	4	1.25	.500	1.77	.812	.750	1	10
AM-45	6	1.44	.625	2.05	1.00	.750	1	10



PULL HANDLES

Buy One or Buy Bulk & SAVE

Black Reinforced Plastic Inch



Bolts directly to doors and panels. Made of black high strength polycarbonate, corrosion resistant.

Item No.	A	B	C	D	E	F	Screw	H	Pack Qty.	Bulk Pack Qty.
KHO-5	4.21	3.681	2.91	1.42	.83	.236	1/4	.52	1	100
KHO-10	5.28	4.606	3.74	1.61	1.02	.276	5/16	.59	1	100
KHO-15	5.91	5.200	4.25	1.77	1.06	.276	5/16	.63	1	100
KHO-20	7.76	7.047	6.02	1.97	1.10	.315	5/16	.67	1	100
KHO-25	10.31	9.250	7.95	2.13	1.22	.350	5/8	.79	1	100

HBS Series Bridge Handles Black Nylon



Item No.	Fits Socket Head Screw
HBS0100A	1/4-20, 5/16-18, M6
HBS0110A	5/16-18, M8
HBS0120A	5/16-18, M8
HBS2000A	1/4-20, 5/16-18, M6

Colored Caps available. See HBSC Series below

Features:

- Round base with plain bore thru hole for use with specified socket head cap screw
- Made of impact and scratch resistant material
- Lightweight and versatile
- Caps are optional and available in 3 different colors (see HBSC Series) - Not available for HBS2000A

Item No.	Type	W	H	w	h	T	Pack Qty.	Bulk Pack Qty.					
HBS0100A	1	4.705	119.5	1.378	35.0	3.677	93.4	1.142	29.0	0.256	6.5	1	100
HBS0110A	1	5.709	145.0	1.575	40.0	4.606	117.0	1.339	34.0	0.335	8.5	1	100
HBS0120A	1	6.417	163.0	1.772	45.0	5.197	132.0	1.496	38.0	0.335	8.5	1	100
HBS2000A	2	5.512	140.0	1.575	40.0	4.804	122.0	1.260	32.0	0.984	25.0	1	25

HBSC Series Bridge Handle Caps Nylon



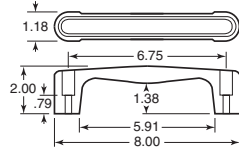
Used with Bridge Handles See HBS Series above

Features:

- Available for closure purposes or color-coding requirements
- Available in 2 sizes and 3 colors to fit HBS series Type 1 Handles

Item No.	Color	Used With	Pack Qty.	Bulk Pack Qty.
HBSC06A	BLACK	HBS0100A, HBS0110A	1	200
HBSC06B	BLUE	HBS0100A, HBS0110A	1	200
HBSC06C	RED	HBS0100A, HBS0110A	1	200
HBSC08A	BLACK	HBS0120A	1	200
HBSC08B	BLUE	HBS0120A	1	200
HBSC08C	RED	HBS0120A	1	200

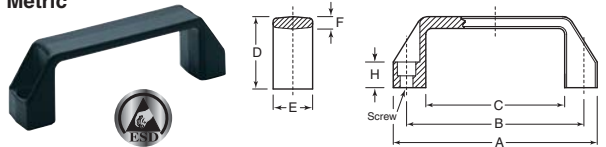
Black Plastic Large Grab Handle Inch



Blind hole mount includes zinc plated steel screws. Front mount accepts #10 or M5 screws, both type mounts have a removable snap in cover to conceal screw.

Item No.	Southco	Mounting	Pack Qty.	Bulk Pack Qty.
SC-181	B8-63	Front	1	100
SC-182	B8-66	Blind	1	100

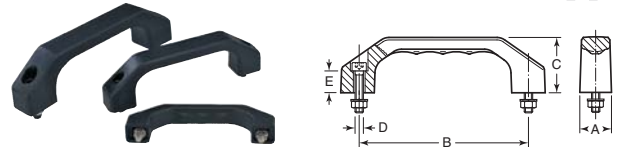
Black Plastic ESD-C (Electrostatic Discharge Conductive) Metric



The special conductive technopolymer ESD-C (Electrostatic Discharge Conductive) prevents the transfer of electrostatic discharge between bodies with different electric potential. These handles are suitable for ESD Protected Areas (EPA), where components are susceptible to electrostatic discharge, are to be handled with the minimum risk of damage. The indelibly printed mark (ESD-C) on the surface of the handle identifies the particular anti-static feature in accordance with EN 1000 15 / 1 and IEC 61340-5-1.

Item No.	A	B	C	D	E	F	H	Screw	Pack Qty.	Bulk Pack Qty.
ESP-735	109	93.5 mm +/- 0.5	74	38	21	6	13	6.5	1	100
ESP-736	137	117 mm +/- 1	93	41	26	7	15	8.5	1	100

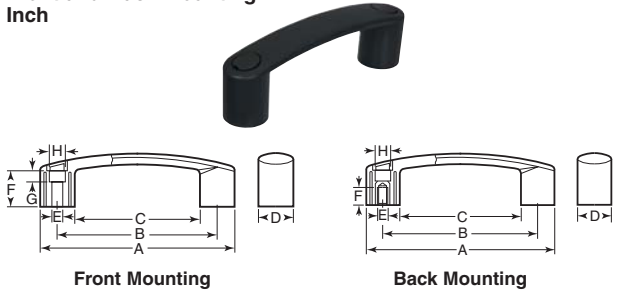
Black Thermoplastic Stirrup Shaped Thru Hole Metric



Item No.	A	B	C	Thread D	Screw Length	E	Pack Qty.	Bulk Pack Qty.
KPB-1342	19	100	33	M5 x .8	22	13	1	100
KPB-1343	23	120	39	M6 x 1	25	15	1	100
KPB-1344	27	140	45	M8 x 1.25	30	16	1	100
KPB-1345	31	160	52	M8 x 1.25	35	20	1	100
KPB-1346	35	180	58	M10 x 1.50	40	20	1	50

Note: Supplied with fastening screws.

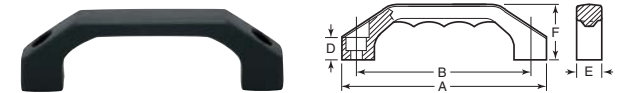
Black Plastic Front and Back Mounting Inch



Made of glass fiber reinforced technopolymer with black matte finish. Front mount has two through holes. Back mount has brass bushings with tapped blind holes. Both styles come with removable black caps to conceal holes.

Item No.	Mounting	A	B	C	D	E	F	G	H	Pack Qty.	Bulk Pack Qty.
ESP-122	Front	4.57	3.68	2.83	.87	.25	.92	.25	.41	1	100
ESP-123	Back	4.57	3.68	2.83	.87	1/4-20	.47	—	.41	1	100
ESP-110	Front	5.67	4.61	3.62	1.02	.33	1.04	.33	.53	1	100
ESP-115	Back	5.67	4.61	3.62	1.02	5/16-18	.51	—	.53	1	100
ESP-124	Front	7.01	5.91	4.80	1.10	.33	1.26	.55	.53	1	100
ESP-125	Back	7.01	5.91	4.80	1.10	5/16-18	.51	—	.53	1	100

Black Reinforced Nylon Inch



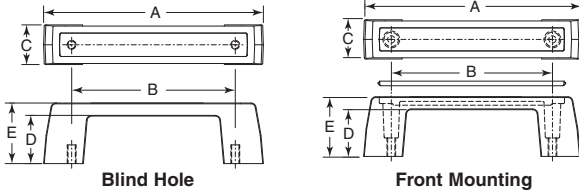
Item No.	A	B	Screw	D	E	F	Pack Qty.	Bulk Pack Qty.
DUH-50	4 ⁵ / ₁₆	3 ¹ / ₁₆	#12	3 ³ / ₁₆	3/4	1 ¹ / ₁₆	1	100
DUH-55	5 ³ / ₁₆	4 ² / ₁₆	1/4	1 ¹ / ₁₆	2 ³ / ₁₆	1 ¹ / ₁₆	1	100
DUH-60	6 ¹ / ₁₆	5 ³ / ₁₆	5/16	5/8	1 ¹ / ₁₆	1 ¹ / ₁₆	1	100
DUH-65	7 ¹ / ₁₆	6 ¹ / ₁₆	3/8	2 ³ / ₁₆	1 ¹ / ₁₆	2 ³ / ₁₆	1	100
DUH-70	8 ³ / ₁₆	7 ³ / ₁₆	1/2	2 ³ / ₁₆	1 ¹ / ₁₆	2 ³ / ₁₆	1	100



Black Plastic Small Grab Handle Inch



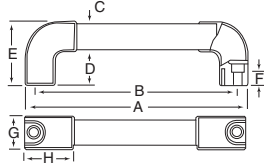
southco®



Blind hole includes zinc plated steel lockwashers and screws. Front mount accepts #10 or M5 screw and has removable snap-in cover to conceal screw heads.

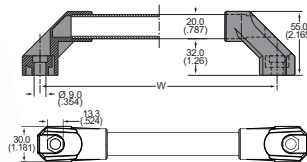
Item No.	Southco	Mounting	Insert	A	B	C	D	E	Pack Qty.	Bulk Pack Qty.
SC-185	B8-45	Blind	M6 x 1	5.88	4.38	1.07	1.27	1.62	1	100
SC-183	B8-43	Front	—	5.88	4.38	1.07	1.27	1.62	1	100

Anodized Aluminum Tube Black Thermoplastic Ends Bridge Inch



Item No.	A	B	C	D	E	F	G	H	Use Socket Head Screw	Pack Qty.	Bulk Pack Qty.
JCL-1700	8.66	7.87	.79	1.30	2.44	.45	1.18	1.97	8mm or 5/16"	1	25
JCL-1740	8.82	7.87	1.18	1.69	3.03	.67	1.57	2.36	10mm or 3/8"	1	25
JCL-1705	10.63	9.83	.79	1.30	2.44	.45	1.18	1.97	8mm or 5/16"	1	25
JCL-1745	10.79	9.83	1.18	1.69	3.03	.67	1.57	2.36	10mm or 3/8"	1	25
JCL-1710	12.60	11.81	.79	1.30	2.44	.45	1.18	1.97	8mm or 5/16"	1	25
JCL-1750	12.76	11.81	1.18	1.69	3.03	.67	1.57	2.36	10mm or 3/8"	1	25
JCL-1715	14.57	13.78	.79	1.30	2.44	.45	1.18	1.97	8mm or 5/16"	1	25
JCL-1755	14.72	13.78	1.18	1.69	3.03	.67	1.57	2.36	10mm or 3/8"	1	25
JCL-1720	16.54	15.75	.79	1.30	2.44	.45	1.18	1.97	8mm or 5/16"	1	25
JCL-1760	16.69	15.75	1.18	1.69	3.03	.67	1.57	2.36	10mm or 3/8"	1	100
JCL-1725	20.47	19.68	.79	1.30	2.44	.45	1.18	1.97	8mm or 5/16"	1	100
JCL-1765	20.63	19.68	1.18	1.69	3.03	.67	1.57	2.36	10mm or 3/8"	1	25
JCL-1730	24.41	23.62	.79	1.30	2.44	.45	1.18	1.97	8mm or 5/16"	1	25
JCL-1770	24.75	23.62	1.18	1.69	3.03	.67	1.57	2.36	10mm or 3/8"	1	100
JCL-1735	28.35	27.56	.79	1.30	2.44	.45	1.18	1.97	8mm or 5/16"	1	100
JCL-1775	28.50	27.56	1.18	1.69	3.03	.67	1.57	2.36	10mm or 3/8"	1	100

HRM Series Aluminum Machine Handles Glass Filled Nylon Ends

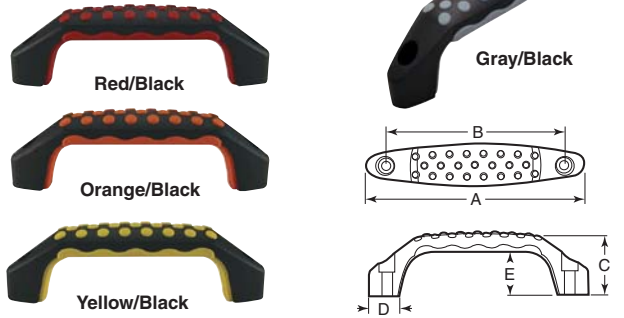


Features:

- Strong handles suitable for machine applications
- Tubes can be cut down to other sizes

Item No.	In	mm	Pack Qty.	Bulk Pack Qty.
HRM000A	-	-	1	20
HRM200A	7.870	199.9	1	50
HRM300A	11.810	300.0	1	50
HRM400A	15.750	400.1	1	20
HRM500A	19.690	500.1	1	20

Black Thermoplastic Soft Elastomer Grip Inch

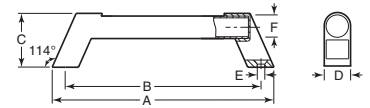


Black thermoplastic with soft, colored elastomer grip. Through hole mount, fits 1/4-20 or M6 socket head cap screw.

See page 766 for socket head cap screws.

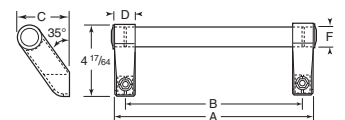
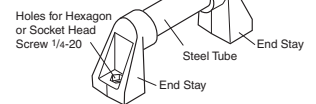
Item No.	Color	A	B	C	D	E	Pack Qty.	Bulk Pack Qty.
DK-1106	Gray/Black	5 ²⁵ / ₃₂	4 ²³ / ₃₂	1 ¹¹ / ₁₆	2 ²⁹ / ₃₂	1 ¹ / ₂	1	50
DK-1107	Red/Black	5 ²⁵ / ₃₂	4 ²³ / ₃₂	1 ¹¹ / ₁₆	2 ²⁹ / ₃₂	1 ¹ / ₂	1	50
DK-1108	Orange/Black	5 ²⁵ / ₃₂	4 ²³ / ₃₂	1 ¹¹ / ₁₆	2 ²⁹ / ₃₂	1 ¹ / ₂	1	50
DK-1109	Yellow/Black	5 ²⁵ / ₃₂	4 ²³ / ₃₂	1 ¹¹ / ₁₆	2 ²⁹ / ₃₂	1 ¹ / ₂	1	50

Anodized Aluminum Tube Black Thermoplastic Ends Bridge Inch



Item No.	A	B	C	D	E	F	Pack Qty.	Bulk Pack Qty.
RST-160	9.02	7.87	2.36	1.26	.33	.98	1	100
RST-161	10.98	9.83	2.36	1.26	.33	.98	1	100
RST-162	12.95	11.81	2.36	1.26	.33	.98	1	100
RST-163	14.92	13.78	2.36	1.26	.33	.98	1	100
RST-164	16.89	15.75	2.36	1.26	.33	.98	1	100
RST-165	20.83	19.68	2.36	1.26	.33	.98	1	50
RST-166	24.76	23.62	2.36	1.26	.33	.98	1	50
RST-167	28.70	27.56	2.36	1.26	.33	.98	1	50

Steel Tube with Black Plastic Coating Black Polyamide Ends Variable Length Bridge Inch



The 30mm (1.18") heavy duty steel tube with black plastic coating is cut to the lengths listed below to meet your application needs. End pieces are made from black polyamide. Each handle contains a tube and two ends.

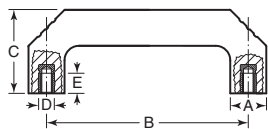
Item No.	A	B	C	D	F	Pack Qty.	Bulk Pack Qty.
90° Angle Bar Assembly							
ELH-109508	12.99	11.81	3.15	1.81	1.18	1	25
ELH-109509	16.93	15.75	3.15	1.81	1.18	1	25
ELH-109510	20.87	19.69	3.15	1.81	1.18	1	25
ELH-109511	24.81	23.63	3.15	1.81	1.18	1	25
ELH-109512	28.74	27.56	3.15	1.81	1.18	1	25
ELH-109513	32.68	31.50	3.15	1.81	1.18	1	25
35° Angle Bar Assembly							
ELH-109514	11.72	10.47	2.97	1.25	1.18	1	25
ELH-109515	15.66	14.41	2.97	1.25	1.18	1	25
ELH-109516	19.59	18.34	2.97	1.25	1.18	1	25
ELH-109517	23.53	22.28	2.97	1.25	1.18	1	25
ELH-109518	27.47	26.22	2.97	1.25	1.18	1	25
ELH-109519	31.40	30.15	2.97	1.25	1.18	1	25



PULL HANDLES

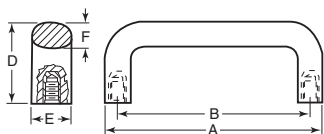
Buy One or Buy Bulk & SAVE

Black Phenolic Stirrup Shaped Metric



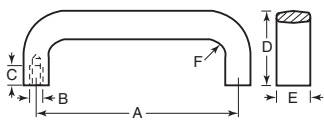
Item No.	A	B	C	Insert		Pack Qty.	Bulk Pack Qty.
				Thread D	E		
KPB-1334	25	140	58	M8 x 1.25	14	Brass	1 100
KPB-1335	25	140	58	M8 x 1.25	14	Steel	1 100

Black Plastic Brass Insert Inch



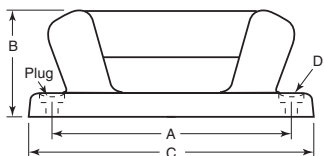
Item No.	A	B	D	E	F	Insert		Pack Qty.	Bulk Pack Qty.
						Thread	Depth		
KHO-50	3.94	3.38	1.73	.91	.55	1/4-20	0.47	1	100
KHO-55	5.20	4.61	1.89	.94	.59	3/16-18	0.51	1	100
KHO-60	7.72	7.05	2.24	1.06	.63	3/16-18	0.51	1	100

Black Polyurethane Foam Rubber with Steel Core Internal Metric Threads Inch



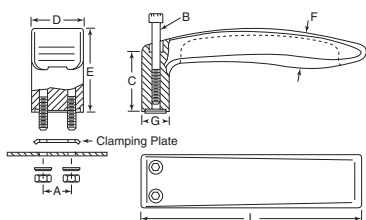
Item No.	A	B	C	D	E	F	Vertical Lifting Load (lbs.)	Pack Qty.	Bulk Pack Qty.
WCH-55	5.04	M6 x 1.0	.39	2.13	.98	.28	300	1	25
WCH-60	6.30	M6 x 1.0	.39	2.13	.98	.35	250	1	25

Black Polyurethane with Steel Core Hand-Hold Inch

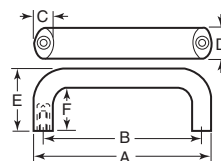


Item No.	A	B	C	D	Pack Qty.	Bulk Pack Qty.
WBH-15	5.91	2.60	6.89	.26	1	25

Black Thermoplastic One-Sided Inch



Black Thermoplastic Solid, Blind Hole Inch and Metric



Item No.	A	B	C	D	E	F	Insert		Pack Qty.	Bulk Pack Qty.
							Thread	Depth		
Inch										
JCL-1600	4.19	3.70	.49	.79	1.60	1.10	10-32	.285	1	100
JCL-1605	4.19	3.70	.49	.79	1.60	1.10	1/4-20	.375	1	100
JCL-1610	5.28	4.61	.63	.98	1.97	1.34	10-32	.285	1	100
JCL-1615	5.28	4.61	.63	.98	1.97	1.34	1/4-20	.375	1	100
JCL-1620	5.28	4.61	.63	.98	1.97	1.34	3/16-18	.469	1	100
JCL-1625	5.83	5.20	.63	.98	1.97	1.34	10-32	.285	1	100
JCL-1630	5.83	5.20	.63	.98	1.97	1.34	1/4-20	.375	1	100
JCL-1635	5.83	5.20	.63	.98	1.97	1.34	3/16-18	.469	1	100
JCL-1640	6.61	5.91	.71	1.14	2.28	1.58	1/4-20	.375	1	100
JCL-1645	6.61	5.91	.71	1.14	2.28	1.58	3/16-18	.469	1	100
JCL-1650	6.61	5.91	.71	1.14	2.28	1.58	3/16-18	.469	1	100
JCL-1655	7.76	7.05	.71	1.14	2.28	1.58	3/16-18	.469	1	100
JCL-1660	7.76	7.05	.71	1.14	2.28	1.58	3/16-18	.469	1	100
Metric										
JCL-5250	134	117	16	25	50	34	M6	9	1	100
JCL-5255	134	117	16	25	50	34	M8	14	1	100
JCL-5260	148	132	16	25	50	34	M6	9	1	100
JCL-5275	168	150	18	29	58	40	M8	14	1	100
JCL-5285	197	179	18	29	58	40	M8	14	1	100

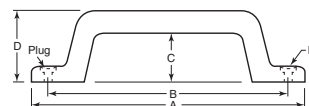
Black Polypropylene with Steel Core Inch



Molded polypropylene with integral snap-shut sections to conceal mounting holes. Semi gloss, textured finish. Strong, lightweight.

Item No.	Overall Length	Width	Height	Mounting Hole (Slotted)	Pack Qty.	Bulk Pack Qty.
WBH-30	6.81	.98	1.57	.31 x .20	1	25

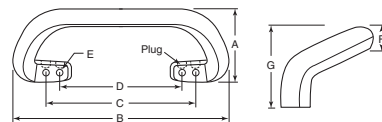
Black Polyurethane with Steel Core Grab-Handles Inch



Item No.	A	B	C	D	E	Pack Qty.	Bulk Pack Qty.
WBH-25	7.48	6.18	1.26	2.17	.31	1	25
WBH-20	11.02	9.96	1.45	2.17	.31	1	25

Made from black expanded polyurethane molded around a steel core. They are very strong, yet offer a soft padded feel. All are finished with a semi-gloss textured finish with snap-in plugs to cover countersunk mounting holes. Snap-in plugs work best with 1/4 inch or M6 pan head screws.

Black Polyurethane with Steel Core Grab-Rail Inch



No sharp corners for maximum safety.

Item No.	A	B	C	D	E	F	G	Pack Qty.	Bulk Pack Qty.
WBH-10	4.02	11.81	8.39	6.50	.28	.98	2.95	1	25

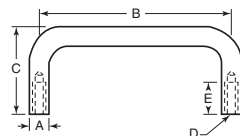


For use where one-sided fastening is desired. Made from black thermoplastic with matte finish. Supplied with socket head screws, nuts, washers and stainless clamping plate.

Item No.	A	L	B	C	D	E	F	G	Pack Qty.	Bulk Pack Qty.
TCH-30	.67	5.04	M5 x 45mm	1.30	1.18	1.89	.79	.71	1	50
TCH-33	.78	6.14	M6 x 55mm	1.58	1.42	2.28	.95	.87	1	50

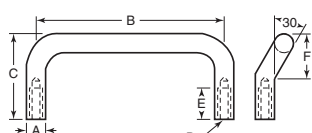


Aluminum, Brass or 303 Stainless Steel
Round Internal Threads
Inch



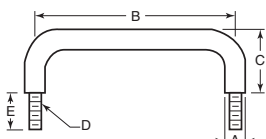
Item No.	A	B	C	Thread D	Min. E	Pack Qty.	Bulk Pack Qty.	Item No.	A	B	C	Thread D	Min. E	Pack Qty.	Bulk Pack Qty.	Item No.	A	B	C	Thread D	Min. E	Pack Qty.	Bulk Pack Qty.
Aluminum - Black Anodized								Aluminum - Black Anodized								303 Stainless Steel - Passivated, Dull Finish							
VPH-10	5/32	1	1	4-40	1/4	1	50	VPH-58	3/8	7	1 1/4	10-32	3/8	1	50	VPH-229	5/16	3	1 1/2	10-32	3/8	1	50
VPH-15	5/32	1 1/4	1	4-40	1/4	1	50	VPH-59	3/8	8	1 1/4	10-32	3/8	1	50	VPH-232	5/16	3 1/2	1 1/2	10-32	3/8	1	50
VPH-17	5/32	1 1/2	1	4-40	1/4	1	50	VPH-61	3/8	10	1 1/4	1/4-20	9/16	1	50	VPH-230	5/16	4	1 1/2	10-32	3/8	1	50
VPH-20	5/32	2	1	4-40	1/4	1	50	VPH-62	3/8	12	1 1/4	1/4-20	9/16	1	50	VPH-2465	5/16	4	3	10-32	3/8	1	50
VPH-22	5/32	2 1/2	1	4-40	1/4	1	50	VPH-63	1/2	3	1 1/8	10-32	3/8	1	50	VPH-237	5/16	4 1/2	1 1/2	10-32	3/8	1	50
VPH-25	5/32	3	1	4-40	1/4	1	50	VPH-2510	1/2	3	3	10-32	3/8	1	50	VPH-242	5/16	5	1 1/2	10-32	3/8	1	50
VPH-2315	1/4	2	1 1/2	8-32	5/16	1	50	VPH-60	1/2	4	1 1/8	10-32	3/8	1	50	VPH-2467	5/16	5	3	10-32	3/8	1	50
VPH-2320	1/4	2 1/2	1 1/2	8-32	5/16	1	50	VPH-2515	1/2	4	3	10-32	3/8	1	50	VPH-2460	5/16	5 1/2	1 1/2	10-32	3/8	1	50
VPH-2325	1/4	3	1 1/2	8-32	5/16	1	50	VPH-64	1/2	5	1 1/8	10-32	3/8	1	50	VPH-245	5/16	6	1 1/2	10-32	3/8	1	50
VPH-2330	1/4	3 1/2	1 1/2	8-32	5/16	1	50	VPH-2520	1/2	5	3	10-32	3/8	1	50	VPH-2469	5/16	6	3	10-32	3/8	1	50
VPH-2335	1/4	4	1 1/2	8-32	5/16	1	50	VPH-3090	1/2	5	4	10-32	3/8	1	50	VPH-2471	5/16	6 1/2	3	10-32	3/8	1	50
VPH-2340	1/4	4 1/2	1 1/2	8-32	5/16	1	50	VPH-65	1/2	6	1 1/8	1/4-20	9/16	1	50	VPH-246	5/16	7 1/2	1 1/2	10-32	3/8	1	50
VPH-2345	1/4	5	1 1/2	8-32	5/16	1	50	VPH-2540	1/2	6	3	1/4-20	9/16	1	50	VPH-247	5/16	8	1 1/2	10-32	3/8	1	50
VPH-2350	1/4	6	1 1/2	8-32	5/16	1	50	VPH-70	1/2	7	1 1/8	1/4-20	9/16	1	50	VPH-248	5/16	9	1 1/2	10-32	3/8	1	50
VPH-27	5/16	2	1 1/2	10-32	3/8	1	50	VPH-2545	1/2	7	3	1/4-20	9/16	1	50	VPH-250	3/8	3	1 1/4	10-32	3/8	1	50
VPH-28	5/16	2 1/2	1 1/2	10-32	3/8	1	50	VPH-75	1/2	8	1 1/8	1/4-20	9/16	1	50	VPH-255	3/8	4	1 1/4	10-32	3/8	1	50
VPH-30	5/16	3	1 1/2	10-32	3/8	1	50	VPH-2550	1/2	8	3	1/4-20	9/16	1	50	VPH-256	5	1	10-32	3/8	1	50	
VPH-32	5/16	3 1/2	1 1/2	10-32	3/8	1	50	VPH-80	1/2	10	1 1/8	5/16-18	9/16	1	50	VPH-257	6	1	10-32	3/8	1	50	
VPH-35	5/16	4	1 1/2	10-32	3/8	1	50	VPH-2570	1/2	10	3	5/16-18	9/16	1	50	VPH-258	7	1	10-32	3/8	1	50	
VPH-2365	5/16	4	3	10-32	3/8	1	50	VPH-85	1/2	12	1 1/8	5/16-18	9/16	1	50	VPH-259	8	1	10-32	3/8	1	50	
VPH-37	5/16	4 1/2	1 1/2	10-32	3/8	1	50	VPH-2575	1/2	12	3	5/16-18	9/16	1	50	VPH-262	12	1	1/4-20	9/16	1	50	
VPH-40	5/16	4 1/2	1 1/2	10-32	3/8	1	50	303 Stainless Steel - Passivated, Dull Finish								VPH-260	1/2	4	1 1/2	10-32	3/8	1	50
VPH-42	5/16	5	1 1/2	10-32	3/8	1	50	VPH-210	5/32	1	1	4-40	1/4	1	50	VPH-2530	1/2	4	3	10-32	3/8	1	50
VPH-2367	5/16	5	3	10-32	3/8	1	50	VPH-217	5/32	1 1/2	1	4-40	1/4	1	50	VPH-264	1/2	5	1 1/2	10-32	3/8	1	50
VPH-2360	5/16	5 1/2	1 1/2	10-32	3/8	1	50	VPH-220	5/32	2	1	4-40	1/4	1	50	VPH-2535	1/2	5	3	10-32	3/8	1	50
VPH-45	5/16	6	1 1/2	10-32	3/8	1	50	VPH-222	5/32	2 1/2	1	4-40	1/4	1	50	VPH-265	1/2	6	1 1/8	1/4-20	9/16	1	50
VPH-2369	5/16	6	3	10-32	3/8	1	50	VPH-225	5/32	3	1	4-40	1/4	1	50	VPH-2555	1/2	6	3	1/4-20	9/16	1	50
VPH-43	5/16	6 1/2	1 1/2	10-32	3/8	1	50	VPH-2410	1/4	1 1/2	1 1/2	8-32	5/16	1	50	VPH-2560	1/2	7	3	1/4-20	9/16	1	50
VPH-44	5/16	7	1 1/2	10-32	3/8	1	50	VPH-2415	1/4	2	1 1/2	8-32	5/16	1	50	VPH-275	1/2	8	1 1/8	1/4-20	9/16	1	50
VPH-2373	5/16	7	3	10-32	3/8	1	50	VPH-2420	1/4	2 1/2	1 1/2	8-32	5/16	1	50	VPH-2565	1/2	8	3	1/4-20	9/16	1	50
VPH-2375	5/16	7 1/2	3	10-32	3/8	1	50	VPH-2425	1/4	3	1 1/2	8-32	5/16	1	50	VPH-280	1/2	10	1 1/8	5/16-18	9/16	1	50
VPH-47	5/16	8	1 1/2	10-32	3/8	1	50	VPH-2430	1/4	3 1/2	1 1/2	8-32	5/16	1	50	VPH-2580	1/2	10	3	5/16-18	9/16	1	50
VPH-48	5/16	9	1 1/2	10-32	3/8	1	50	VPH-2435	1/4	4	1 1/2	8-32	5/16	1	50	VPH-285	1/2	12	1 1/8	5/16-18	9/16	1	50
VPH-49	5/16	10	1 1/2	10-32	3/8	1	50	VPH-2440	1/4	4 1/2	1 1/2	8-32	5/16	1	50	VPH-2585	1/2	12	3	5/16-18	9/16	1	50
VPH-50	3/8	3	1 1/4	10-32	3/8	1	50	VPH-2445	1/4	5	1 1/2	8-32	5/16	1	50	Brass - Zinc, Clear Chromate Plated Finish							
VPH-55	3/8	4	1 1/4	10-32	3/8	1	50	VPH-2450	1/4	6	1 1/2	8-32	5/16	1	50	VPH-410	5/16	4	1 1/2	10-32	3/8	1	50
VPH-56	3/8	5	1 1/4	10-32	3/8	1	50	VPH-227	5/16	2	1 1/2	10-32	3/8	1	50	VPH-415	5/16	4 1/2	1 1/2	10-32	3/8	1	50
VPH-57	3/8	6	1 1/4	10-32	3/8	1	50	VPH-228	5/16	2 1/2	1 1/2	10-32	3/8	1	50	VPH-425	3/8	4	1 1/2	10-32	3/8	1	50

Aluminum or Stainless Steel
Round Offset, Internal Threads
Inch



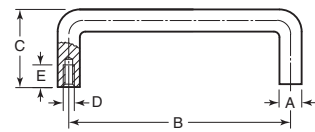
Item No.	A	B	C	Thread D	Min. E	F	Pack Qty.	Bulk Pack Qty.
Aluminum - Black Anodized Finish								
VPH-2610	5/16	3	1 1/2	10-32	3/8	7/8	1	50
VPH-2615	5/16	4	1 1/2	10-32	3/8	7/8	1	50
VPH-2620	5/16	4 1/2	1 1/2	10-32	3/8	7/8	1	50
VPH-2625	5/16	5	1 1/2	10-32	3/8	7/8	1	50
VPH-2635	5/16	6	1 1/2	10-32	3/8	7/8	1	50
VPH-2640	5/16	7	1 1/2	10-32	3/8	7/8	1	50
VPH-2645	5/16	8	1 1/2	10-32	3/8	7/8	1	50
VPH-2655	5/16	10	1 1/2	10-32	3/8	7/8	1	50
Stainless - Passivated, Dull Finish								
VPH-2660	5/16	3	1 1/2	10-32	3/8	7/8	1	50
VPH-2665	5/16	4	1 1/2	10-32	3/8	7/8	1	50
VPH-2670	5/16	4 1/2	1 1/2	10-32	3/8	7/8	1	50
VPH-2675	5/16	5	1 1/2	10-32	3/8	7/8	1	50
VPH-2685	5/16	6	1 1/2	10-32	3/8	7/8	1	50
VPH-2695	5/16	8	1 1/2	10-32	3/8	7/8	1	50
VPH-2705	5/16	10	1 1/2	10-32	3/8	7/8	1	50

Aluminum, Black Anodized or Dull Finish
Round with Shoulder, External Threads
Inch



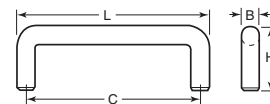
Item No.	A	B	C	Thread D	E	Pack Qty.	Bulk Pack Qty.
Aluminum - Black Anodized Finish							
VPH-1430	5/16	6	1 13/16	1/4-20	1/2	1	50
Aluminum - Passivated, Dull Finish							
VPH-1470	5/16	4	1 13/16	10-32	1/2	1	50
VPH-1480	5/16	6	1 13/16	1/4-20	1/2	1	50

Aluminum - Black or Clear Anodized
Round, Stirrup Shaped, Internal Threads
Metric



Item No.	A	B	C	Thread D	Min. E	Pack Qty.	Bulk Pack Qty.
Black Anodized							
KPB-1347	10	55	41	M5 x .80	10	1	100
KPB-1348	10	88	41	M5 x .80	10	1	100
KPB-1349	10	100	41	M5 x .80	10	1	100
KPB-1350	10	120	41	M5 x .80	10	1	100
KPB-1351	10	180	41	M5 x .80	10	1	100
Clear Anodized							
KPB-1355	10	55	41	M5 x .80	10	1	100
KPB-1356	10	88	41	M5 x .80	10	1	100
KPB-1357	10	100	41	M5 x .80	10	1	100
KPB-1358	10	120	41	M5 x .80	10	1	100
KPB-1359	10	180	41	M5 x .80	10	1	100

Stainless Steel - Type 316
Round
Inch



All handles are made from Type 316 stainless steel, with a satin finish. Supplied with stainless steel mounting screws.

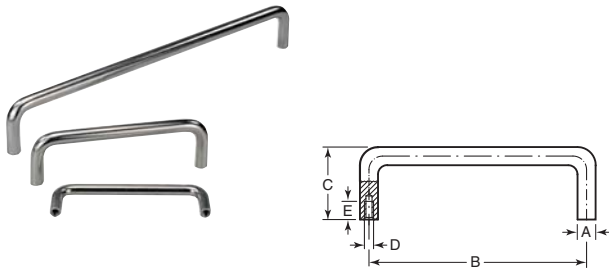
Item No.	L	C	H	B	Thread	Pack Qty.	Bulk Pack Qty.
SUG-105	4.37	4	1.378	.394	8-32	1	100
SUG-106	5.374	5	1.378	.394	8-32	1	100
SUG-107	6.378	6	1.378	.394	8-32	1	



PULL HANDLES

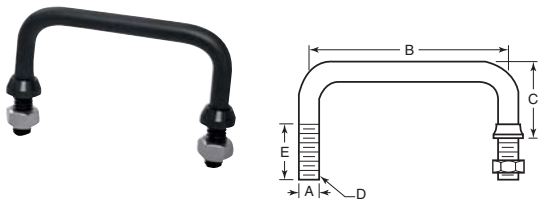
Buy One or Buy Bulk & SAVE

Stainless Steel - Type 303
Round, Bow Shaped
Metric



Item No.	A	B	C	Thread D	Min. E	Pack Qty.	Bulk Pack Qty.
KPB-1411	8	100	35	M5 x .80	10	1	100
KPB-1412	10	120	40	M5 x .80	10	1	100
KPB-1413	10	250	40	M5 x .80	10	1	100
KPB-1414	10	350	40	M5 x .80	10	1	50

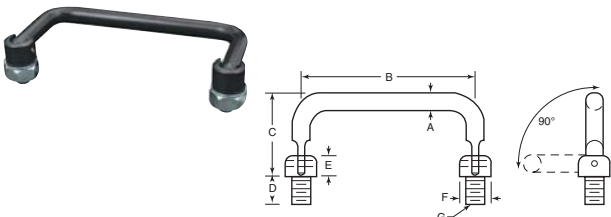
Aluminum or 303 / 304 Stainless Steel
Round, External Threads Without Shoulder
Inch



Supplied with nuts and ferrules to give a neat finished look.

Item No.	A	B	C	Thread D	E	Pack Qty.	Bulk Pack Qty.
Aluminum - Black Anodized Finish							
VPH-504	3/16	3	17/16	3/16-18	15/16	1	50
VPH-508	3/16	4	17/16	3/16-18	15/16	1	50
VPH-512	3/16	4 1/2	17/16	3/16-18	15/16	1	50
VPH-515	3/16	6	17/16	3/16-18	15/16	1	50
VPH-550	3/8	4	1 1/2	3/8-24	15/16	1	50
VPH-560	3/8	4 1/2	1 1/2	3/8-24	15/16	1	50
VPH-575	3/8	6	1 1/2	3/8-24	15/16	1	50
303/304 Stainless Steel - Passivated, Dull Finish							
VPH-704	3/16	3	17/16	3/16-18	15/16	1	50
VPH-706	3/16	3 3/4	17/16	3/16-18	15/16	1	50
VPH-708	3/16	4	17/16	3/16-18	15/16	1	50
VPH-710	3/16	4 1/4	17/16	3/16-18	15/16	1	50
VPH-712	3/16	4 1/2	17/16	3/16-18	15/16	1	50
VPH-714	3/16	5	17/16	3/16-18	15/16	1	50
VPH-715	3/16	6	17/16	3/16-18	15/16	1	50
VPH-750	3/8	4	1 1/2	3/8-24	15/16	1	50
VPH-760	3/8	4 1/2	1 1/2	3/8-24	15/16	1	50
VPH-770	3/8	5	1 1/2	3/8-24	15/16	1	50
VPH-775	3/8	6	1 1/2	3/8-24	15/16	1	50
VPH-780	3/8	9	1 1/2	3/8-24	15/16	1	50

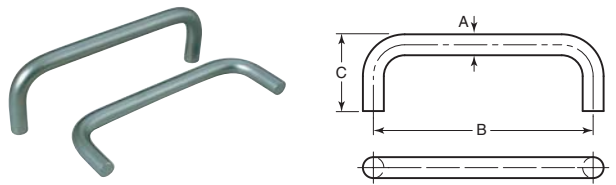
Aluminum
Folding
Round, External Threads, 90°, Free Fall
Inch



These folding handles fall freely when not in use. Supplied with washers and nuts.

Item No.	A	B	C	D	E	F	Thread G	Pack Qty.	Bulk Pack Qty.
Aluminum - Black Anodized Finish									
VPH-3760	1/4	3	1.46	3/8	3/16	7/16	1/4-28	1	50
VPH-3765	1/4	3 1/2	1.46	3/8	3/16	7/16	1/4-28	1	50
VPH-3770	1/4	4	1.46	3/8	3/16	7/16	1/4-28	1	50
VPH-3775	1/4	4 1/2	1.46	3/8	3/16	7/16	1/4-28	1	50

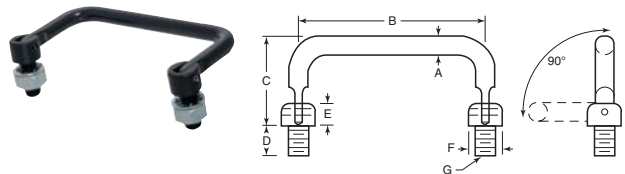
Stainless Steel - Type 300
Round Blank - No Mounting Threads
Metric



These U-Handles have no threads and are weldable. Can also be used on applications that require special threads or holes for mounting.

Item No.	A	B	C	Pack Qty.	Bulk Pack Qty.
WCH-705	10	125	43	1	25
WCH-710	10	160	43	1	25
WCH-715	12	125	51	1	25
WCH-720	12	160	51	1	25
WCH-725	12	200	51	1	25

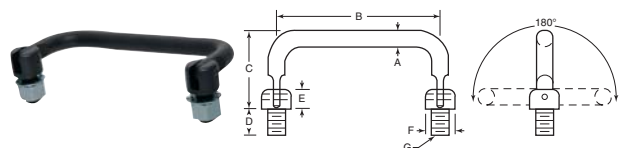
Aluminum, 303 Stainless Steel or Brass
Folding
Round, External Threads, 90°
Two Position, Spring Loaded Detents
Inch



These folding handles work in two positions. They are held secure in both the open and retracted position by spring loaded detents. Supplied with nuts.

Item No.	A	B	C	D	E	F	Thread G	Pack Qty.	Bulk Pack Qty.
Aluminum - Black Anodized Finish									
VPH-3800	1/4	3	1.46	3/16	5/16	7/16	1/4-28	1	50
VPH-3810	1/4	4	1.46	3/16	5/16	7/16	1/4-28	1	50
VPH-3815	1/4	5	1.46	3/16	5/16	7/16	1/4-28	1	50
VPH-910	3/8	4	1.85	3/8	1/2	5/8	3/8-24	1	50
VPH-912	3/8	4 1/2	1.85	3/8	1/2	5/8	3/8-24	1	50
VPH-915	3/8	5	1.85	3/8	1/2	5/8	3/8-24	1	50
VPH-916	3/8	6	1.85	3/8	1/2	5/8	3/8-24	1	50
VPH-918	3/8	8	1.85	3/8	1/2	5/8	3/8-24	1	50
303 Stainless Steel - Passivated, Dull Finish									
VPH-3780	1/4	4 1/2	1.43	3/16	5/16	7/16	1/4-28	1	50
VPH-3785	1/4	5	1.43	3/16	5/16	7/16	1/4-28	1	50
VPH-930	3/8	4	1.85	3/8	1/2	5/8	3/8-24	1	25
VPH-950	3/8	4 1/2	1.85	3/8	1/2	5/8	3/8-24	1	50
VPH-960	3/8	5	1.85	3/8	1/2	5/8	3/8-24	1	50
VPH-970	3/8	6	1.85	3/8	1/2	5/8	3/8-24	1	50
VPH-980	3/8	8	1.85	3/8	1/2	5/8	3/8-24	1	50
Brass - Zinc, Clear Chromate Plated Finish									
VPH-920	3/8	4	1.85	3/8	1/2	5/8	3/8-24	1	25

Aluminum or 303 Stainless Steel
Folding
Round, External Threads, 180°
Three Position, Spring Loaded Detents
Inch

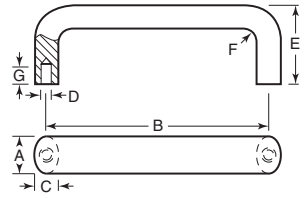


These folding handles work in three positions. They are held secure in the up, down and mid position by spring load detents. Supplied with nuts.

Item No.	A	B	C	D	E	F	Thread G	Pack Qty.	Bulk Pack Qty.
Aluminum - Black Anodized Finish									
VPH-1620	3/8	4	1.85	3/8	1/2	5/8	3/8-24	1	50
VPH-1630	3/8	4 1/2	1.85	3/8	1/2	5/8	3/8-24	1	50
VPH-1640	3/8	5	1.85	3/8	1/2	5/8	3/8-24	1	50
303 Stainless Steel - Passivated, Dull Finish									
VPH-1710	3/8	3	1.85	3/8	1/2	5/8	3/8-24	1	25
VPH-1740	3/8	5	1.85	3/8	1/2	5/8	3/8-24	1	25



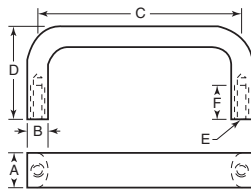
Aluminum, Brass or Stainless Steel
Oval, Internal Threads
Inch and Metric



See page 779 for fasteners.

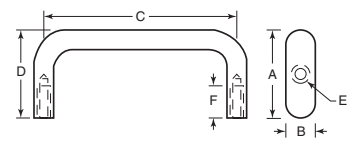
Item No.	A	B	C	D	E	F	Min. G	Vertical Lifting Load (lbs.)	Pack Qty.	Bulk Pack Qty.	Item No.	A	B	C	D	E	F	Min. G	Vertical Lifting Load (lbs.)	Pack Qty.	Bulk Pack Qty.
Aluminum - Black Epoxy Finish - Inch											Brass - Bright Nickel Plated Finish - Inch										
VPH-1050	5/8	3	3/32	10-32	1 1/2	1/2	3/8	—	1	50	VPH-1090	5/8	4 1/16	3/32	10-32	1 1/2	1/2	3/8	—	1	50
VPH-1052	5/8	3	3/32	10-32	1 1/2	1/2	3/8	—	1	50	VPH-1130	5/8	9	3/32	10-32	1 3/4	1/2	3/8	—	1	50
VPH-1070	5/8	4	3/32	10-32	1 1/2	1/2	3/8	—	1	50	Stainless - Passivated, Dull Finish - Inch										
VPH-1310	5/8	4	3/32	10-32	3	1/2	3/8	—	1	50	VPH-1010	7/16	3	3/32	10-32	1 1/2	1/2	3/8	—	1	50
VPH-1072	5/8	4 1/2	3/32	10-32	1 1/2	1/2	3/8	—	1	50	VPH-3710	7/16	3	3/32	10-32	1 1/2	3/8	5/16	—	1	50
VPH-1080	5/8	4 3/16	3/32	10-32	1 1/2	1/2	3/8	—	1	50	VPH-3715	7/16	4	3/32	10-32	1 1/2	3/8	5/16	—	1	50
VPH-1082	5/8	5	3/32	10-32	1 1/2	1/2	3/8	—	1	50	VPH-1020	7/16	4 3/16	3/32	10-32	1 1/2	1/2	3/8	—	1	50
VPH-3050	5/8	6	3/32	10-32	1 3/8	1/2	3/8	—	1	50	VPH-3720	7/16	5	3/32	10-32	1 1/2	3/8	5/16	—	1	50
VPH-1100	5/8	6	3/32	10-32	1 1/2	1/2	3/8	—	1	50	VPH-3725	7/16	6	3/32	10-32	1 1/2	3/8	5/16	—	1	50
VPH-1320	5/8	6	3/32	10-32	3	1/2	3/8	—	1	50	VPH-1030	7/16	9	3/32	10-32	1 3/4	1/2	3/8	—	1	50
VPH-1102	5/8	7	3/32	10-32	1 1/2	1/2	3/8	—	1	50	VPH-1011	5/8	3	3/32	10-32	1 1/2	1/2	3/8	—	1	50
VPH-1104	5/8	8	3/32	10-32	1 1/2	1/2	3/8	—	1	50	VPH-1012	5/8	4	3/32	10-32	1 1/2	1/2	3/8	—	1	50
VPH-1330	5/8	8	3/32	10-32	3	1/2	3/8	—	1	50	VPH-1022	5/8	4	3/32	10-32	3	1/2	3/8	—	1	50
VPH-1120	5/8	9	3/32	10-32	1 3/4	1/2	3/8	—	1	50	VPH-1013	5/8	4 1/2	3/32	10-32	1 1/2	1/2	3/8	—	1	50
VPH-1340	5/8	10	3/32	10-32	3	1/2	3/8	—	1	50	VPH-1014	5/8	4 3/16	3/32	10-32	1 1/2	1/2	3/8	—	1	50
VPH-1350	5/8	12	3/32	10-32	3	1/2	3/8	—	1	50	VPH-1015	5/8	5	3/32	10-32	1 1/2	1/2	3/8	—	1	50
Aluminum - Black Anodized Finish - Inch											VPH-1016										
VPH-3565	3/16	2	3/32	8-32	1 1/2	3/8	5/16	—	1	50	VPH-1023	5/8	6	3/32	10-32	3	1/2	3/8	—	1	50
VPH-3675	7/16	2 1/4	3/32	10-32	1 1/2	3/8	5/16	—	1	50	VPH-1017	5/8	7	3/32	10-32	1 1/2	1/2	3/8	—	1	50
VPH-3535	7/16	2 1/2	3/32	10-32	1	3/8	5/16	—	1	50	VPH-1018	5/8	8	3/32	10-32	1 1/2	1/2	3/8	—	1	50
VPH-3570	7/16	2 1/2	3/32	8-32	1 1/2	3/8	5/16	—	1	50	VPH-1024	5/8	8	3/32	10-32	3	1/2	3/8	—	1	50
VPH-3605	7/16	2 1/2	3/32	10-32	1 1/2	3/8	5/16	—	1	50	VPH-1019	5/8	10	3/32	10-32	1 1/2	1/2	3/8	—	1	50
VPH-3510	7/16	3	3/32	8-32	1	3/8	5/16	—	1	50	VPH-1021	5/8	12	3/32	10-32	1 1/2	1/2	3/8	—	1	50
VPH-3540	7/16	3	3/32	10-32	1	3/8	5/16	—	1	50	Aluminum - Tumbled Finish - Metric										
VPH-3640	7/16	3	3/32	8-32	1 1/2	3/8	5/16	—	1	50	WCH-200	.79	3.94	.51	M6 x 1.0	1.85	.51	.39	899	1	25
VPH-3610	7/16	3 1/2	3/32	10-32	1 1/2	3/8	5/16	—	1	50	WCH-220	.79	4.41	.51	M6 x 1.0	1.93	.51	.39	843	1	25
VPH-3685	7/16	3 1/2	3/32	10-32	1 1/2	3/8	5/16	—	1	50	WCH-240	.79	5.04	.51	M6 x 1.0	2.01	.51	.39	618	1	25
VPH-3515	7/16	4	3/32	8-32	1	3/8	5/16	—	1	50	WCH-260	.79	6.30	.51	M6 x 1.0	2.01	.51	.39	450	1	25
VPH-3545	7/16	4	3/32	10-32	1	3/8	5/16	—	1	50	WCH-280	1.02	4.41	.67	M8 x 1.25	2.09	.67	.47	1349	1	25
VPH-3645	7/16	4	3/32	8-32	1 1/2	3/8	5/16	—	1	50	WCH-300	1.02	5.04	.67	M8 x 1.25	2.17	.67	.47	1237	1	25
VPH-3690	7/16	4	3/32	10-32	1 1/2	3/8	5/16	—	1	50	WCH-320	1.02	6.30	.67	M8 x 1.25	2.24	.67	.47	1124	1	25
VPH-3695	7/16	4 1/4	3/32	10-32	1 1/2	3/8	5/16	—	1	50	WCH-340	1.02	7.56	.67	M8 x 1.25	2.24	.67	.47	899	1	25
VPH-3590	5/16	4 1/2	3/32	8-32	1 1/2	3/8	5/16	—	1	50	WCH-380	1.02	15.75	.67	M8 x 1.25	2.24	.67	.47	180	1	25
VPH-3620	7/16	4 1/2	3/32	10-32	1 1/2	3/8	5/16	—	1	50	Aluminum - Black Matte Plastic Finish - Inch										
VPH-3655	7/16	4 3/16	3/32	8-32	1 1/2	3/8	5/16	—	1	50	WCH-480	.79	4.41	.51	1/4-20	1.93	.51	.39	843	1	25
VPH-3550	7/16	5	3/32	10-32	1	3/8	5/16	—	1	50	WCH-490	.79	5.04	.51	1/4-20	2.01	.51	.39	618	1	25
VPH-3660	7/16	5	3/32	8-32	1 1/2	3/8	5/16	—	1	50	WCH-500	1.02	5.04	.67	5/16-18	2.17	.67	.47	1237	1	25
VPH-3700	7/16	5	3/32	10-32	1 1/2	3/8	5/16	—	1	50	WCH-510	1.02	6.30	.67	5/16-18	2.24	.67	.47	1124	1	25
VPH-3555	7/16	6	3/32	10-32	1	3/8	5/16	—	1	50	WCH-520	1.02	7.56	.67	5/16-18	2.24	.67	.47	899	1	25
VPH-3665	7/16	6	3/32	8-32	1 1/2	3/8	5/16	—	1	50	Aluminum - Black Matte Plastic Finish - Metric										
VPH-3705	7/16	6	3/32	10-32	1 1/2	3/8	5/16	—	1	50	WCH-210	.79	3.94	.51	M6 x 1.0	1.85	.51	.39	899	1	25
VPH-3035	5/8	3	3/32	10-32	1 1/2	1/2	3/8	—	1	50	WCH-230	.79	4.41	.51	M6 x 1.0	1.93	.51	.39	843	1	25
VPH-3060	5/8	4	3/32	10-32	1 1/2	1/2	3/8	—	1	50	WCH-250	.79	5.04	.51	M6 x 1.0	2.01	.51	.39	618	1	25
VPH-3065	5/8	4 3/16	3/32	10-32	1 1/2	1/2	3/8	—	1	50	WCH-270	.79	6.30	.51	M6 x 1.0	2.01	.51	.39	450	1	25
VPH-3075	5/8	4 3/16	3/32	10-24	1 1/2	1/2	3/8	—	1	50	WCH-290	1.02	4.41	.67	M8 x 1.25	2.09	.67	.47	1349	1	25
VPH-3055	5/8	6	3/32	10-32	1 3/8	1/2	3/8	—	1	50	WCH-310	1.02	5.04	.67	M8 x 1.25	2.17	.67	.47	1237	1	25
VPH-3085	5/8	9	3/32	10-24	1 3/4	1/2	3/8	—	1	50	WCH-330	1.02	6.30	.67	M8 x 1.25	2.24	.67	.47	1124	1	25
Aluminum - Clear Anodized Finish - Inch											WCH-350										
VPH-1140	5/8	3	3/8	10-32	1 1/2	1/2	3/8	—	1	50	WCH-370	1.02	11.81	.67	M8 x 1.25	2.24	.67	.47	337	1	25
VPH-1150	5/8	4	3/8	10-32	1 3/4	1/2	3/8	—	1	50	WCH-390	1.02	15.75	.67	M8 x 1.25	2.24	.67	.47	180	1	25
VPH-1160	5/8	8	3/8	10-32	2	1/2	3/8	—	1	50											

Aluminum, Black Anodized Finish
Half Round, Internal Threads
Inch



Item No.	A	B	C	D	E	Min. F	Pack Qty.	Bulk Pack Qty.
VPH-2010	5/8	3/16	3	1 1/2	10-32	3/8	1	50
VPH-2020	5/8	3/16	4	1 1/2	10-32	3/8	1	50
VPH-2030	5/8	3/16	5	1 1/2	10-32	3/8	1	50
VPH-2040	5/8	3/16	6	1 1/2	10-32	3/8	1	50

Aluminum, Black Anodized Finish
Rectangular, Internal Threads, Rounded Sides
Inch



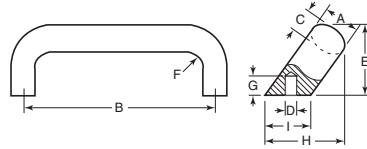
Item No.	A	B	C	D	Thread	Min. F	Pack Qty.	Bulk Pack Qty.
VPH-855	5/8	1/4	3	1 1/2	8-32	3/8	1	50
VPH-860	5/8	1/4	4	1 1/2	8-32	3/8	1	50
VPH-865	5/8	1/4	6	1 1/2	8-32	3/8	1	50
VPH-870	5/8	1/4	8	1 1/2	8-32	3/8	1	50



PULL HANDLES

Buy One or Buy Bulk & SAVE

Aluminum, Black Anodized or Plastic Coated Finish
Ledge and Angle Pulls
35° Angle, Internal Metric Threads
Inch

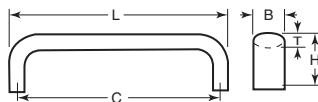


Item No.	A	B	C	D	E	F	G	H	I	Vertical Lifting Load (Lbs.)	Pack Qty.	Bulk Pack Qty.
Aluminum - Black Anodized Finish												
WCH-400	.79	4.41	.51	M6 x 1.0	1.89	.51	.39	1.97	.94	618	1	25
WCH-420	.79	5.04	.51	M6 x 1.0	1.89	.51	.39	1.97	.94	393	1	25
WCH-440	1.02	5.04	.67	M8 x 1.25	2.13	.67	.47	2.24	1.26	1012	1	25
WCH-460	1.02	6.30	.67	M8 x 1.25	2.13	.67	.47	2.24	1.26	731	1	25
Aluminum - Plastic Coated Black Matte Finish												
WCH-410	.79	4.41	.51	M6 x 1.0	1.89	.51	.39	1.97	.94	618	1	25
WCH-430	.79	5.04	.51	M6 x 1.0	1.89	.51	.39	1.97	.94	393	1	25
WCH-450	1.02	5.04	.67	M8 x 1.25	2.13	.67	.47	2.24	1.26	1012	1	25
WCH-470	1.02	6.30	.67	M8 x 1.25	2.13	.67	.47	2.24	1.26	731	1	25

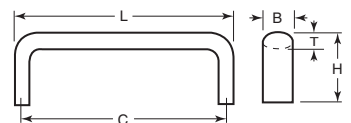
Pull Handles
Stainless Steel - Type 303
Oval, Mirror or Satin Finish
Inch



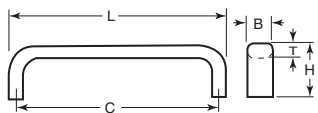
Type A



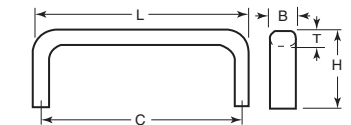
Type B



Type C



Type D

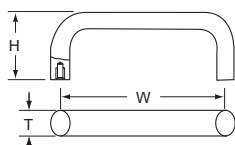


These stainless steel general use pull handles are available in a variety of sizes. They are also ideal for a wide range of applications. Handles are Type 303 stainless and are available with a mirror or satin finish. Handles are supplied with mounting screws.

Item No.	L	C	H	Finish	B	T	Thread		Pack Qty.	Bulk Pack Qty.	Item No.	L	C	H	Finish	B	T	Thread		Pack Qty.	Bulk Pack Qty.
							Size	Depth										Size	Depth		
Type A											Type C										
SUG-7	2.756	2 ³⁵ / ₆₄	.906	Mirror	.512	.236	M4 x .7	.394	1	100	SUG-25	3.937	3 ³ / ₈	1.260	Mirror	.551	.315	M5 x .8	.394	1	100
SUG-8	2.756	2 ³⁵ / ₆₄	.906	Satin	.512	.236	M4 x .7	.394	1	100	SUG-26	3.937	3 ³ / ₈	1.260	Satin	.551	.315	M5 x .8	.394	1	100
SUG-9	3.543	3 ³ / ₁₆	.925	Mirror	.512	.236	M4 x .7	.394	1	100	SUG-27	4.724	4 ¹³ / ₃₂	1.339	Mirror	.551	.315	M5 x .8	.472	1	50
SUG-10	3.543	3 ³ / ₁₆	.925	Satin	.512	.236	M4 x .7	.394	1	100	SUG-28	4.724	4 ¹³ / ₃₂	1.339	Satin	.551	.315	M5 x .8	.472	1	50
SUG-11	4.331	4 ³ / ₃₂	.945	Mirror	.512	.236	M4 x .7	.394	1	100	SUG-29	5.906	5 ¹ / ₂	1.417	Mirror	.551	.315	M5 x .8	.472	1	50
SUG-12	4.331	4 ³ / ₃₂	.945	Satin	.512	.236	M4 x .7	.394	1	100	SUG-30	5.906	5 ¹ / ₂	1.417	Satin	.551	.315	M5 x .8	.472	1	50
SUG-13	5.118	4 ⁷ / ₈	.965	Mirror	.512	.236	M4 x .7	.394	1	100	SUG-32	7.087	6 ²⁹ / ₃₂	1.457	Satin	.551	.315	M5 x .8	.472	1	50
SUG-14	5.118	4 ⁷ / ₈	.965	Satin	.512	.236	M4 x .7	.394	1	100	Type D										
SUG-16	5.906	5 ¹ / ₄	.984	Satin	.512	.236	M4 x .7	.394	1	100	SUG-38	3.268	2 ⁵ / ₆₄	1.575	Satin	.551	.315	M5 x .8	.433	1	50
Type B											SUG-40	4.252	3 ¹ / ₁₆	1.575	Satin	.551	.315	M5 x .8	.433	1	50
SUG-18	1.969	1 ²⁵ / ₃₂	.866	Satin	.394	.197	M3 x .5	.394	1	100	SUG-41	5.236	4 ⁵⁹ / ₆₄	1.575	Mirror	.551	.315	M5 x .8	.433	1	50
SUG-19	2.756	2 ¹ / ₁₆	.886	Mirror	.394	.197	M3 x .5	.394	1	100	SUG-42	5.236	4 ⁵⁹ / ₆₄	1.575	Satin	.551	.315	M5 x .8	.433	1	50
SUG-21	3.543	3 ¹ / ₃₂	.906	Mirror	.394	.197	M3 x .5	.394	1	100	SUG-43	6.220	5 ²⁷ / ₃₂	1.969	Mirror	.551	.315	M5 x .8	.433	1	50
SUG-22	3.543	3 ¹ / ₃₂	.906	Satin	.394	.197	M3 x .5	.394	1	100	SUG-44	8.189	7 ⁷ / ₈	1.969	Mirror	.551	.315	M5 x .8	.433	1	50
											SUG-45	10.157	9 ²⁷ / ₃₂	1.969	Mirror	.551	.315	M5 x .8	.433	1	50
											SUG-46	12.126	11 ¹³ / ₁₆	1.969	Mirror	.551	.315	M5 x .8	.433	1	50

Note: Part numbers SUG-7 through SUG-32 are NSF certified and meet the Food Equipment Industry Standards.

HALB Series
Aluminum Bridge Handles
Black
Oval, Internal Threads
Metric

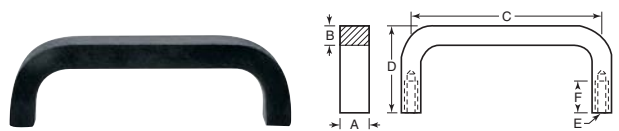


Features:

- Pretapped MS Mounting Holes

Item No.	W		H		T		Thread Size	Pack Qty.	Bulk Pack Qty.
	In	mm	In	mm	In	mm			
HALB100A	3.940	100.0	1.500	38.0	0.630	16.0	M5	1	50
HALB150A	5.910	150.0	1.500	38.0	0.630	16.0	M5	1	50

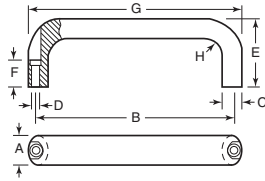
Aluminum, Black Anodized Finish
Rectangular, Internal Threads
Inch



Item No.	A	B	C	D	Thread E	Min. F	Pack Qty.	Bulk Pack Qty.
VPH-3730	1/2	3/16	3	1	10-32	3/16	1	50
VPH-3750	1/2	3/16	4	1 1/2	10-32	3/16	1	50
VPH-3735	1/2	3/16	5	1	10-32	3/16	1	50
VPH-3755	1/2	3/16	6	1 1/2	10-32	3/16	1	50
VPH-810	3/8	1/4	2	1 1/2	8-32	3/16	1	50
VPH-812	3/8	1/4	3	1 1/2	8-32	3/16	1	50
VPH-815	3/8	1/4	4	1 1/2	8-32	3/16	1	50
VPH-817	3/8	1/4	4 1/2	1 1/2	8-32	3/16	1	50
VPH-3025	3/8	1/4	6	1 1/2	8-32	3/16	1	50
VPH-825	3/8	1/4	6	1 1/2	8-32	3/16	1	50
VPH-3030	3/8	1/4	6 1/2	1 1/2	8-32	3/16	1	50
VPH-828	3/8	1/4	8	1 1/2	8-32	3/16	1	50



Aluminum, Tumbled and Black Plastic Finish
Oval, Counterbored
Inch

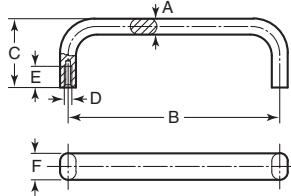


Counterbored so these handles can be fastened from the top using 1/4" or 6.3mm cap screws.

See page 779 for fasteners.

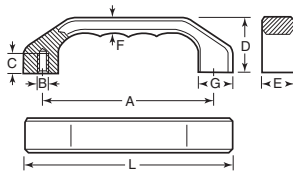
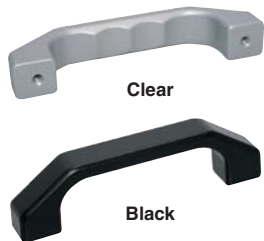
Item No.	A	B	C	D	E	F	G	H	Vertical Lifting Load (lbs.)	Pack Qty.	Bulk Pack Qty.
Aluminum - Tumbled											
WCH-100	1.02	4.57	.67	1/4	2.09	.67	5.12	.67	1349	1	25
WCH-120	1.02	5.20	.67	1/4	2.17	.67	5.75	.67	1012	1	25
WCH-140	1.02	6.46	.67	1/4	2.24	.67	7.01	.67	787	1	25
WCH-160	1.02	7.72	.67	1/4	2.24	.67	8.27	.67	618	1	25
Aluminum - Plastic Coated Black Matte Finish											
WCH-110	1.02	4.57	.67	1/4	2.09	.67	5.12	.67	1349	1	25
WCH-130	1.02	5.20	.67	1/4	2.17	.67	5.75	.67	1012	1	25
WCH-150	1.02	6.46	.67	1/4	2.24	.67	7.01	.67	787	1	25
WCH-170	1.02	7.72	.67	1/4	2.24	.67	8.27	.67	618	1	25

Aluminum - Black Powder Coated or Clear Anodized
Oval, Bow Shaped, Internal Threads
Metric



Item No.	A	B	C	Thread D	Min. E	F	Pack Qty.	Bulk Pack Qty.
Black Powder Coated								
KPB-1363	8	55	40	M5 x .8	10	12	1	100
KPB-1364	8	88	40	M5 x .8	10	12	1	100
KPB-1365	8	100	40	M5 x .8	10	12	1	100
KPB-1366	8	120	40	M5 x .8	10	12	1	100
KPB-1367	8	180	40	M5 x .8	10	12	1	100
KPB-1368	8	200	40	M5 x .8	10	12	1	100
KPB-1379	13	100	50	M6 x 1.0	12	20	1	100
KPB-1380	13	112	50	M6 x 1.0	12	20	1	100
KPB-1383	13	160	50	M6 x 1.0	12	20	1	100
KPB-1386	17	128	55	M8 x 1.25	14	26	1	100
KPB-1388	17	180	55	M8 x 1.25	14	26	1	100
Clear Anodized								
KPB-1374	8	120	40	M5 x .8	10	12	1	100
KPB-1392	13	112	50	M6 x 1.0	12	20	1	100
KPB-1394	13	128	50	M6 x 1.0	12	20	1	100
KPB-1395	13	160	50	M6 x 1.0	12	20	1	100
KPB-1400	17	180	55	M8 x 1.25	14	26	1	100
KPB-1402	17	350	55	M8 x 1.25	14	26	1	50

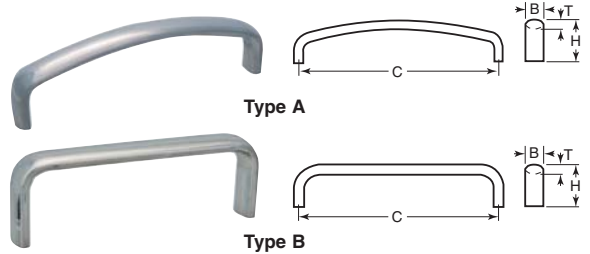
Aluminum - Black or Clear
Inch



Similar in design to the handles above, except made from solid aluminum anodized in either clear or black satin finish.

Clear Item No.	Black Item No.	A	L	B	C	D	E	F	G	Pack Qty.	Bulk Pack Qty.
TCH-48	TCH-51	4.72	5.75	M6	.47	1.54	.87	.41	.95	1	50
TCH-54	TCH-57	5.51	6.70	M8	.59	1.77	.98	.47	1.10	1	50
TCH-60	TCH-63	6.23	7.64	M8	.59	2.05	1.10	.53	1.26	1	50

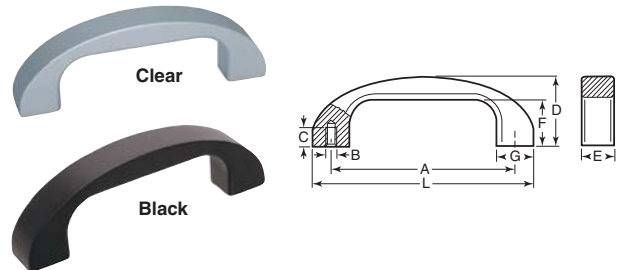
Stainless Steel - Type 316
Oval, Mirror or Satin Finish
Inch



These stainless steel pull handles are available in a variety of sizes. They are also ideal for a wide range of applications. Handles are Type 316 stainless, and are available with a mirror or satin finish. Handles are well suited for marine and chemical environments. Supplied with 304 stainless steel mounting screws.

Item No.	C	H	Finish	B	T	Thread		Pack Qty.	Bulk Pack Qty.
						Size	Depth		
Type A									
SUG-49	4	1.26	Mirror	.551	.276	8-32	3/8	1	100
SUG-52	5	1.26	Satin	.551	.276	8-32	3/8	1	100
SUG-54	6	1.26	Satin	.551	.276	8-32	3/8	1	100
SUG-58	4	1.181	Satin	.551	.197	6-32	3/8	1	100
Type B									
SUG-63	3 1/2	1.260	Mirror	.551	.276	8-32	3/8	1	100
SUG-65	4	1.260	Mirror	.551	.276	8-32	3/8	1	100
SUG-66	4	1.260	Satin	.551	.276	8-32	3/8	1	100
SUG-69	6	1.260	Mirror	.551	.276	8-32	3/8	1	100

Aluminum - Black or Clear
Bow-Handles
Inch



Made from aluminum and anodized with satin finish. Available in either clear or black colors.

Clear Item No.	Black Item No.	A	L	B	C	D	E	F	G	Pack Qty.	Bulk Pack Qty.
TCH-246	TCH-249	4.72	5.67	M6	.47	1.81	.87	1.22	.95	1	50
TCH-252	TCH-255	5.51	6.61	M8	.59	2.09	.98	1.42	1.10	1	50

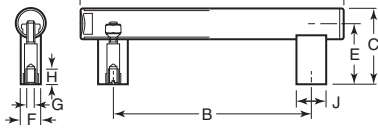


PULL HANDLES

Buy One or Buy Bulk & SAVE



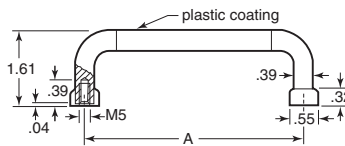
Aluminum Inch



The handle is made from 1.18" aluminum tubing with a polyurethane coat on an epoxy base that is highly resistant to wear, scratches and chemical agents. Metal flake graphite color. The handle supports and end caps are made from plastic and are graphite color. Blind hole mounting.

Item No.	A	+/- .040 B	C	E	F	G	H	J	Pack Qty.	Bulk Pack Qty.
ESP-500	12.40	9.84	2.95	2.36	.71	M8 x 1.25	.59	1.18	1	10
ESP-505	14.37	11.81	2.95	2.36	.71	M8 x 1.25	.59	1.18	1	10
ESP-510	18.31	15.75	2.95	2.36	.71	M8 x 1.25	.59	1.18	1	10
ESP-515	26.18	23.62	2.95	2.36	.71	M8 x 1.25	.59	1.18	1	10

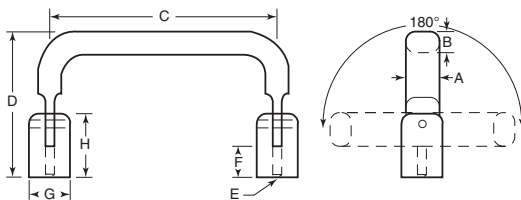
Pull Handles Steel with Plastic Covering Inch



High quality handles for front panels and similar applications. Made from round bar stock with matte gloss chromium plated finish. Smooth plastic covering provides a distinctive look and feel. Includes ferrules for nice clean finish. Fastens with M5 screws.

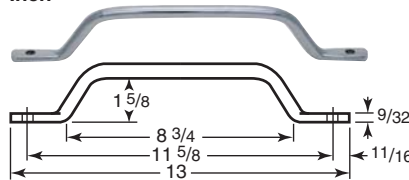
Item No.	A	Pack Qty.	Bulk Pack Qty.	Item No.	A	Pack Qty.	Bulk Pack Qty.
TCH-138	2.17	1	50	TCH-147	7.87	1	50
TCH-141	3.94	1	50	TCH-150	9.84	1	50
TCH-144	5.35	1	50				

Aluminum or 303 / 304 Stainless Steel Folding Oval, Internal Threads, 180°, Free Fall Inch

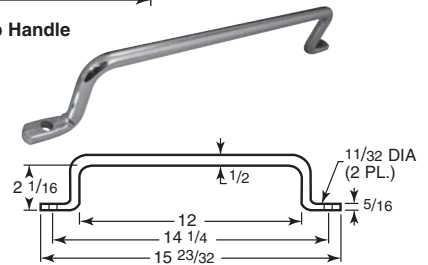


Item No.	A	B	C	D	E	F	G	H	Pack Qty.	Bulk Pack Qty.
Aluminum - Black Anodized Finish										
VPH-1820	5/8	3/32	4	2	10-32	7/16	5/8	1 1/16	1	25
VPH-1840	5/8	3/32	6	2	10-32	7/16	5/8	1 1/16	1	25
303 / 304 Stainless - Passivated, Dull Finish										
VPH-1920	5/8	3/32	4	2	10-32	7/16	5/8	1 1/16	1	25
VPH-1940	5/8	3/32	6	2	10-32	7/16	5/8	1 1/16	1	25

Chrome Plated 1/2" Diameter Rod Inch



Small Grab Handle

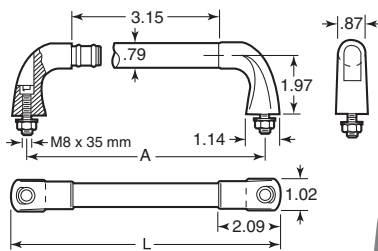


Long Grab Handle

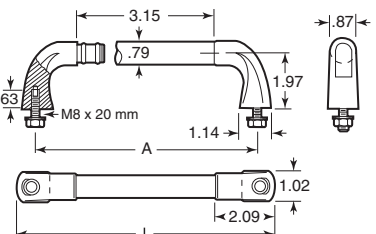
Item No.	Description	Pack Qty.	Bulk Pack Qty.
HH-102	Small Chrome Grab Handle	1	100
HH-103	Long Chrome Grab Handle	1	100



Stainless Steel - Type 316 Tubular Handles .79" Tubing Bar Handle Inch



Type A



Type B

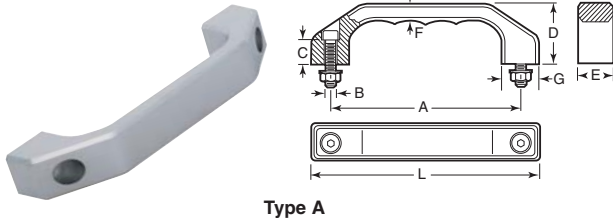
These high quality handles can be fastened from the front or back. The solid shanks are made from precision cast 316 type stainless and electropolished for a dull bright finish. The .093" thick stainless tubes are made from 302 type stainless and electroplated to a semi-matte finish. The shanks have two O-rings to hold and seal the tubing. Type A fastens from the front of the handle and includes M8 x 35mm socket head cap screws, nuts and washers. Type B fastens from the back of the handle and includes M8 x 20mm hex bolts and washers.

Type A Item No.	Type B Item No.	A	L	Pack Qty.	Bulk Pack Qty.
TCH-165	TCH-174	7.87	8.90	1	10
TCH-171	TCH-180	13.78	14.80	1	10

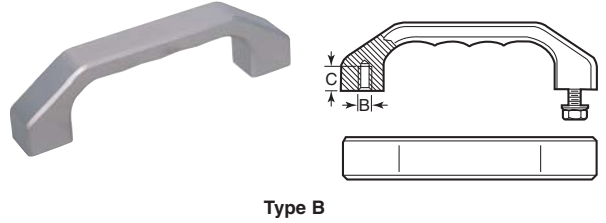


Rohde

**Stainless Steel - Type 304
Inch**



Type A

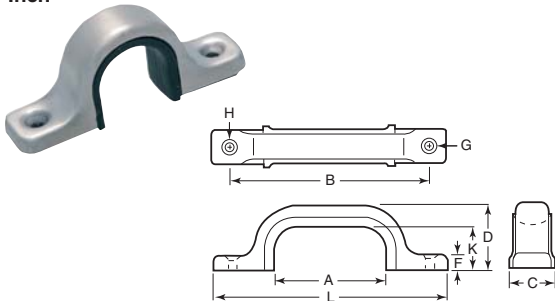


Type B

Made from 304 stainless casting. The surface is blasted and electroplated with a semi-matte finish. Type A has through holes for front mounting and is supplied with stainless socket screws, washers and nuts. Type B has blind holes and is supplied with stainless hex head screws and washers.

Item No.	A	L	B	C	D	E	F	G	Pack Qty.	Bulk Pack Qty.
Type A										
TCH-36	5.51	6.69	M8 x 30	.59	1.77	.98	.47	1.10	1	10
TCH-39	7.09	8.58	M10 x 40	.71	2.28	1.26	.59	1.42	1	10
Type B										
TCH-42	5.51	6.69	M8 x 18	.59	1.77	.98	.47	1.10	1	10
TCH-45	7.09	8.58	M10 x 20	.71	2.28	1.26	.59	1.42	1	10

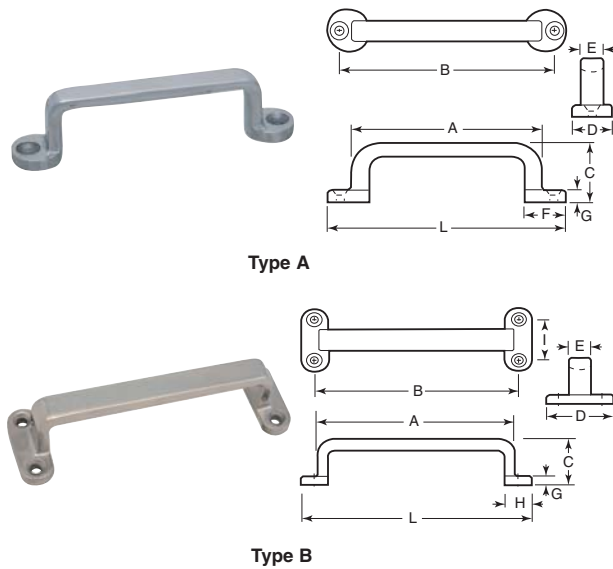
**Stainless Steel - Type 304
With Rubber Grips
Inch**



Handle has rubber grip for improved handling. Supplied with stainless steel screws.

Mirror Item No.	Satin Item No.	L	A	B	C	D	F	G	H	K	Screw Size	Pack Qty.	Bulk Pack Qty.
SUG-79	SUG-80	2.756	.787	2 1/8	.669	1.102	.217	.130	.260	.827	3.1 x 16	1	100
SUG-81	SUG-82	4.724	2.244	4 3/8	.748	1.260	.256	.150	.299	.827	3.5 x 20	1	100
SUG-83	SUG-84	6.299	3.465	5 3/8	.866	1.476	.295	.161	.319	.906	4.1 x 25	1	100

**Stainless Steel - Type 304
Inch**



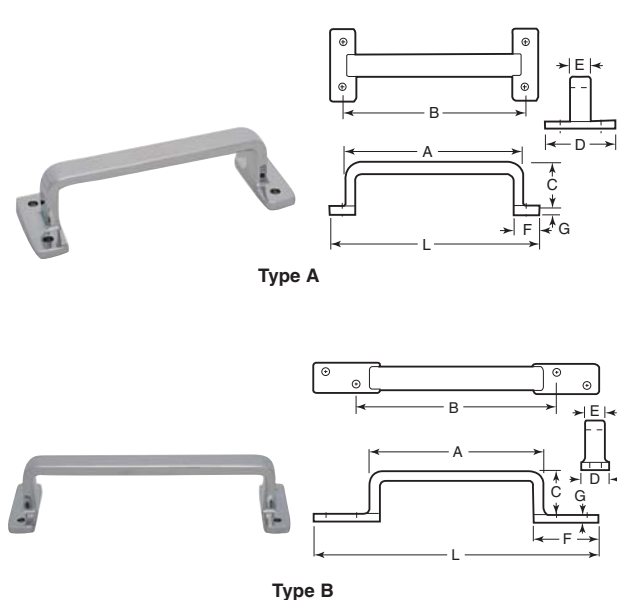
Type A

Type B

Handles are NSF certified and meet the Food Equipment Industry Standard. Mirror finish. Supplied with stainless steel mounting screws.

Item No.	Type	L	A	B	C	D	E	F	G	H	I	Pack Qty.	Bulk Pack Qty.
SUG-85	A	2.559	1.890	2 1/4	.630	.512	.276	—	.138	.512	—	1	100
SUG-86	A	3.150	2.520	2 5/8	.787	.551	.315	—	.157	.551	—	1	100
SUG-87	A	3.937	2.953	3 1/8	.984	.709	.394	—	.197	.709	—	1	50
SUG-88	B	4.724	4.016	4 3/8	1.063	1.417	.472	.551	.197	—	.944	1	50
SUG-89	B	5.906	4.961	5 1/8	1.299	1.772	.591	.709	.236	—	1.181	1	25

**Stainless Steel - Type 316
Inch**



Type A

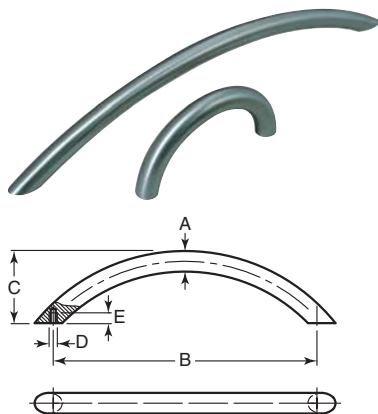
Type B

Handles are NSF certified, and meet the Food Industry Standard. Mirror finish. Supplied with stainless steel mounting screws.

Item No.	Type	L	A	B	C	D	E	F	G	Pack Qty.	Bulk Pack Qty.
SUG-90	A	7.874	6.693	6 5/8	1.969	2.756	.866	.984	.315	1	10
SUG-91	A	11.024	9.843	9 3/8	2.441	3.150	1.024	1.063	.394	1	10
SUG-92	B	11.031	6.693	7 3/8	1.969	1.181	.866	2.559	.315	1	10



Stainless Steel - Type 303
Arched
Tapped Type
Metric



Modern designed handle particularly suitable in the food, chemical or pharmaceutical industry.

Item No.	A	B	C	D	E Min.	Pack Qty.	Bulk Pack Qty.
WCH-600	10	64	35	M4 x 0.7	5	1	25
WCH-605	10	96	35	M4 x 0.7	5	1	25
WCH-610	10	128	35	M4 x 0.7	5	1	25
WCH-615	10	160	35	M4 x 0.7	5	1	25
WCH-620	10	192	35	M4 x 0.7	5	1	25

Solid Brass
Cabinet Hardware Pull Handles
Inch



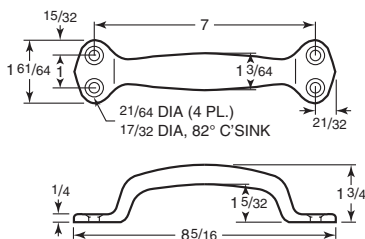
Has 8-32 mounting holes and is supplied with 1" long screw.

Item No.	Finish	Centers	Length	Width	Height	Pack Qty.	Bulk Pack Qty.
AN-121	Brushed Dull Chrome	3 1/2	3 13/16	5/16	1 1/4	1	100

Stainless Steel - Type 303 and 304
Cabinet Hardware
Inch



Black Die Cast
Grab Handle
Inch



Die cast with black powder coat.

Item No.	Description	Pack Qty.	Bulk Pack Qty.
HH-101	Black Die Cast Grab Handle	1	100

Die Cast Zinc
Cabinet Hardware Pull Handles
Inch



Style A



Style B



Style D

Has 8-32 mounting holes and is supplied with 1" long screw.

Item No.	Style	Finish	Centers	Length	Width	Height	Pack Qty.	Bulk Pack Qty.
AN-101	A	Bright Brass	2 3/4	3 1/16	3/4	1 5/16	1	100
AN-104	B	Bright Chrome	3	4	7/16	3/4	1	100
AN-106	D	Brushed Dull Chrome	4	4 1/16	1 1/32	3/4	1	100

Item No.	Hole Centers		Overall Length		Pack Qty.	Bulk Pack Qty.
	Inch	mm	Inch	mm		
AN-191	3.78	96	6.14	156	1	50
AN-192	7.56	192	9.84	250	1	50
AN-195	16.38	416	19.53	496	1	50
AN-199	30.24	768	33.39	848	1	50

Made of high quality Type 303 and 304 solid stainless steel. The vertical posts are 10mm in diameter. The horizontal bar is 12mm in diameter. Has 8-32 mounting holes and is supplied with 1" long screws.



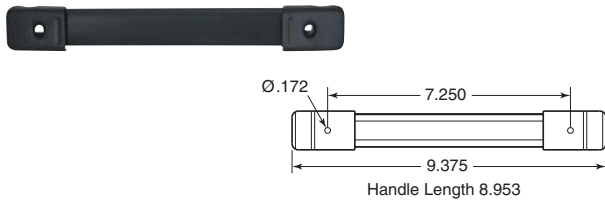
**Black Plastic
Chest, Box and Drawer Handles
Toolbox Handles
Inch**



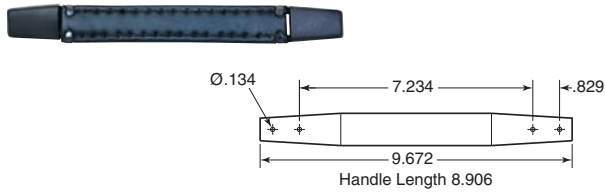
Toolbox handle is black injection molded polyethylene with nickel plated steel cleats.

Item No.	Description	Pack Qty.	Bulk Pack Qty.
AHC-5	Plastic Toolbox	1	50

**Vinyl
Chest, Box and Drawer Handles
Flat Handles
Inch**



General Purpose



Heavy Duty

AHC-2 is a general purpose vinyl handle with wide spring steel insert. AHC-1 is a heavy duty flat handle that has live rubber wrapped around spring steel inserts. Covered with black imitation leather and stitched. Hardware on both handles is black epoxy coat.

Item No.	Description	Pack Qty.	Bulk Pack Qty.
AHC-2	General Purpose Flat	1	50
AHC-1	Heavy Duty Flat	1	50

**DWP Series
Drawer Pulls
Black
Nylon or ABS**



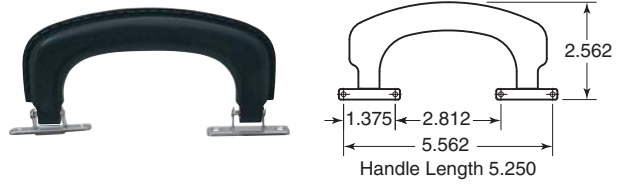
Style 1

Style 2

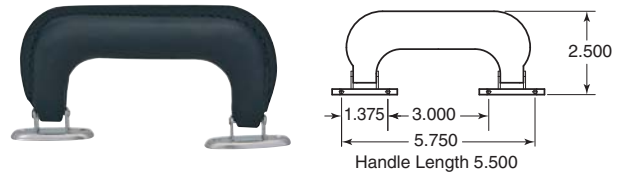
Style 3

Style 4

**Black Polyethylene
Chest, Box and Drawer Handles
Luggage Style Handles
Inch**



General Purpose

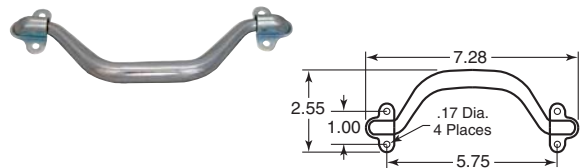


Heavy Duty

AHC-4 luggage style handle is black molded virgin polyethylene with leather-like appearance. AHC-3 heavy duty luggage style handle is all steel shell covered with black imitation leather and stitched. Hardware on both handles is rugged two piece construction nickel plated.

Item No.	Description	Pack Qty.	Bulk Pack Qty.
AHC-4	General Purpose Luggage-Style	1	50
AHC-3	Heavy Duty Luggage-Style	1	50

**Steel
Toolbox Handle
Inch**



Rugged steel, formed construction offering a very economical 180 degree swing handle for small box applications. Steel with zinc finish.

Item No.	Description	Pack Qty.	Bulk Pack Qty.
NSH-225	Steel Tool Box Handle	1	25

Item No.	Style	Distance Between Holes		Material	Color	Pack Qty.	Bulk Pack Qty.
		In	mm				
DWP1100A	1	4.000	101.6	Nylon	Black	1	1300
DWP1200A	2	4.000	101.6	ABS	Black	1	400
DWP1300A	3	4.000	101.6	ABS	Black	1	400
DWP1400A	4	3.750	95.3	ABS	Black	1	442
DWP1400E	4	3.750	95.3	ABS	Grey	1	442



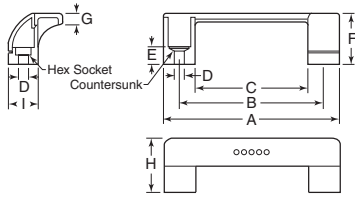
PULL HANDLES

Made of glass fiber reinforced plastic with black matte finish. Has a removable orange safety cover to protect fingers. Safety covers available separately below in other colors. Available in two thru hole mounting options for hex head socket screws or countersunk screws.

Black Plastic Handle with Orange Safety Covers Wing Style Inch



ERGOSTYLE®

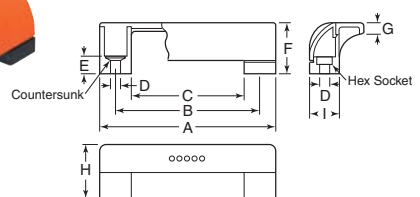


Item No.	Mounting	A	+/- .020 B	C	D	E	F	G	H	I	Pack Qty.	Bulk Pack Qty.
ESP-355	HH Socket	4.49	3.68	2.91	.26	.43	1.30	.28	1.38	.75	1	100
ESP-360	Countersunk	4.49	3.68	2.91	.26	.43	1.30	.28	1.38	.75	1	100

Black Plastic Guard Handles and Accessories Safety Style Inch



ERGOSTYLE®



Item No.	Mounting	A	+/- .020 B	C	D	E	F	G	H	I	Pack Qty.	Bulk Pack Qty.
ESP-345	HH Socket	4.49	3.68	2.91	.26	.43	1.30	.28	1.38	.75	1	100
ESP-350	Countersunk	4.49	3.68	2.91	.26	.43	1.30	.28	1.38	.75	1	100

Black or Yellow Plastic Guard Handles and Accessories Safety Covers Inch



ERGOSTYLE®



Item No.	Color	Pack Qty.	Bulk Pack Qty.
ESP-356	Black	1	100
ESP-358	Yellow	1	100

Black or Yellow Plastic Guard Handles and Accessories Safety Covers Inch



ERGOSTYLE®



Item No.	Color	Pack Qty.	Bulk Pack Qty.
ESP-346	Black	1	100
ESP-348	Yellow	1	100

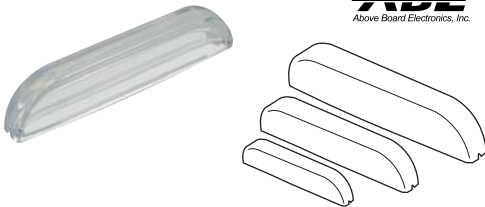
Clear Acrylic Inch



Request Info

1-800-453-1692

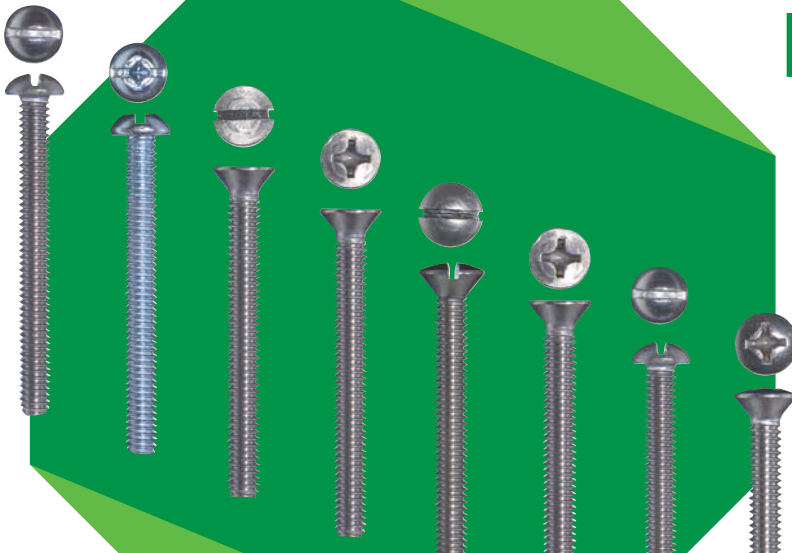
www.aboveboardelectronics.com



Can be used as pulls, handles, knobs or feet. Transparent. Solvent cementable.

Item No.	Length	Height	Pack Qty.	Bulk Pack Qty.
CR-5	2	3/8	1	250
CR-6	2 3/4	7/16	1	250
CR-7	3 1/2	1/2	1	250

MACHINE SCREWS



Pages 779 - 781

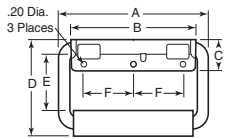


**Stainless Steel
1/2 Plate Style Handle
Inch**



Type A

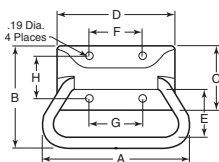
Type B



Reduced mounting plate area with three mounting holes for quick attachments. 90 degree stop. Stainless steel spring return and rubber grip. All components of NSH-120 are stainless steel, except the rubber grip.

Item No.	Type	A	B	C	D	E	F	Finish	Pack Qty.	Bulk Pack Qty.
NSH-100	A	5.12	4.20	1.09	3.09	1.70	1.69	Zinc	1	25
NSH-110	A	5.12	4.20	1.09	3.09	1.70	1.69	Black	1	25
NSH-120	A	5.12	4.20	1.09	3.09	1.70	1.69	Stainless	1	25
NSH-200	B	5.12	4.50	1.19	3.20	1.90	1.69	Zinc	1	25

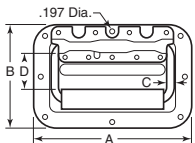
**Steel
Chest
Inch**



An economical handle that can lift up to 400 lbs. It has a 90 degree stop, no spring return. Made of steel.

Item No.	A	B	C	D	E	F	G	H	Finish	Pack Qty.	Bulk Pack Qty.
NSH-50	4.10	2.90	1.76	3.37	1.42	1.53	1.53	1.189	Zinc	1	25
NSH-60	4.10	2.90	1.76	3.37	1.42	1.53	1.53	1.189	Black	1	25
NSH-220	4.43	3.00	2.52	4.00	2.27	3.00	3.00	1.75	Zinc	1	25

**Recessed Dished Style Handle
Steel
Inch**

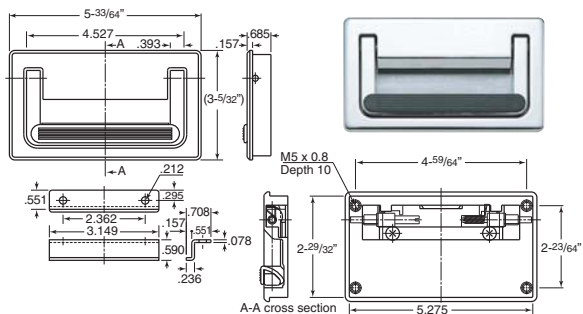


Provides compact flush mounting on containers and other enclosures. The handle includes a 90 degree stop for

lifting heavy loads and a durable stainless steel spring to assure that the handle bail returns to the recessed position when released. NSH-10 and NSH-20 mount into a 3.10" x 5.20" rectangular opening. NSH-30 and NSH-40 mount into 3.90" x 5.7". Dish and bail are made of steel.

Item No.	A	B	C	D	Finish	Pack Qty.	Bulk Pack Qty.
NSH-10	6 1/8	4	1/4	1 13/16	Zinc	1	25
NSH-20	6 1/8	4	1/4	1 13/16	Black	1	25
NSH-30	7	5	7/16	2 1/16	Zinc	1	25
NSH-40	7	5	7/16	2 1/16	Black	1	25

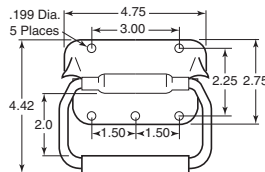
**Recessed
Zinc Alloy / Synthetic Rubber
Chrome Finish**



This spring loaded trunk handle is strong (66 lbs. load capacity). Body and handle are zinc alloy with chrome finish, grip is synthetic rubber. Spring, screw and bracket are steel with yellow zinc chromate finish. Durable construction. Rubber pad on handle for good grip.

Item No.	Max. Dead Load (lbs)	Pack Qty.	Bulk Pack Qty.
SUG-529	66	1	20

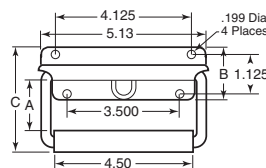
**Steel with Zinc Plated Finish
Heavy Duty Style Handle
Inch**



The rugged design makes these handles the mainstay on military containers and other applications where strength and durability are a must. It has a 90 degree stop and stainless steel spring return. A special aluminum sleeve located between the rubber grip and the bail assures the grip will not ride up on the bail during lifting. Made of steel with zinc plated finish.

Item No.	Description	Pack Qty.	Bulk Pack Qty.
NSH-70	Heavy Duty Spring Return	1	25

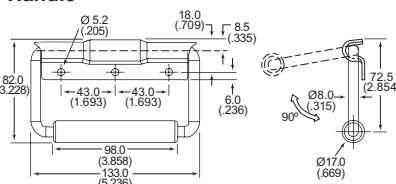
**Steel and Stainless
Chest, Box and Drawer Handles
Rectangular Bail Style Handle
Inch**



The rectangular bail gives this handle a clean appearance. 90 degree stop. All have a stainless steel double torsion spring for reliable return of the handle and a rubber grip. Steel models have a zinc plated steel bail and mounting plate. Stainless models have stainless bail and mounting plate.

Item No.	Type	A	B	C	Pack Qty.	Bulk Pack Qty.
NSH-130	Steel	1.50	1.56	3.25	1	25
NSH-140	Stainless	1.50	1.65	3.25	1	25
NSH-150	Steel	2.38	1.56	4.10	1	25
NSH-160	Stainless	2.38	1.65	4.10	1	25

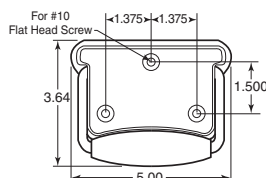
**HSL Series
Spring Loaded Hinged Handle
Chrome Plated Steel**



- Features:
- Rubber grip on handle
 - Spring loaded to keep flush

Item No.	Pack Qty.	Bulk Pack Qty.
HSL100A	1	5

**Steel with Zinc Plated Finish
Chest, Box and Drawer Handles
Barrel Grip Style Handle
Inch**



Bail stops at 90 degree when lifting and has two return springs to assure that the bail returns to the recessed position. Made from steel with zinc plated finish.

Item No.	Description	Pack Qty.	Bulk Pack Qty.
NSH-170	Barrel Grip Handles	1	25



Aluminum Angle Handles with Hand Grip Inch

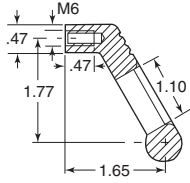
Rohde



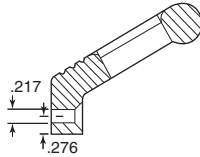
Clear



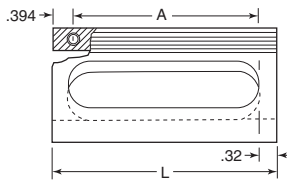
Black



Type A



Type B

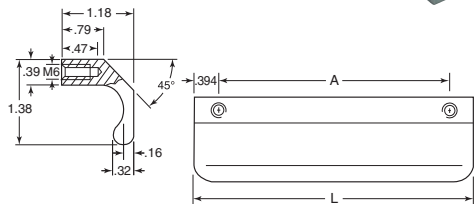


Made from profile aluminum ridges on the handle. Provide a distinctive look and feel. Type A has an internal M6 thread. Type B has a through hole M5 counter sunk screw for lateral assembly. Available in either clear or black anodized finish.

Clear Item No.	Black Item No.	A	L	Pack Qty.	Bulk Pack Qty.
Type A					
TCH-114	TCH-117	3.39	4.17	1	50
TCH-120	TCH-123	4.72	5.51	1	50
Type B					
TCH-126	TCH-129	3.39	4.17	1	50
TCH-132	TCH-135	4.72	5.51	1	50

Stainless Steel Ledge and Angle Pulls L-Handles Inch

Rohde

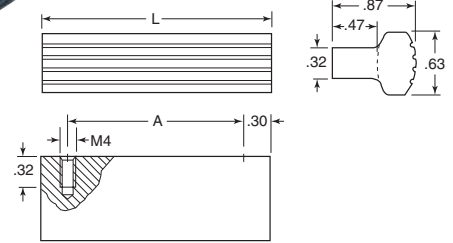


Made from Type 316 stainless steel. They have been blasted and electro polished with a semi-matte finish. Fastens with M6 screws.

Item No.	A	L	Pack Qty.	Bulk Pack Qty.
TCH-66	2.36	3.15	1	25
TCH-69	3.15	3.94	1	25

Aluminum T-Handle Inch

Rohde



Vibropolished and anodized to a matte finish. Ridges on the handle provide a distinctive look and feel. Fastens with M4 screws.

Clear Item No.	Black Item No.	A	L	Pack Qty.	Bulk Pack Qty.
TCH-78	TCH-81	1.18	1.77	1	50
TCH-84	TCH-87	2.76	3.35	1	50
TCH-90	TCH-93	4.13	4.72	1	50

Aluminum Ledge Handle Inch

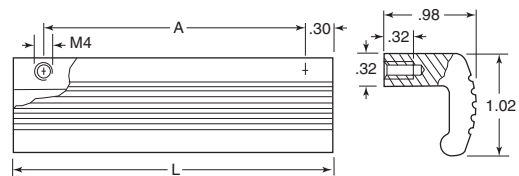
Rohde



Clear



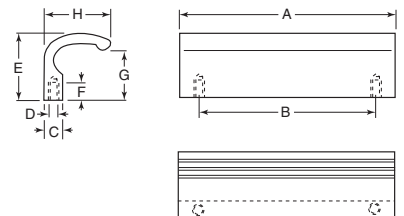
Black



Vibropolished and anodized to a matte finish. Ridges on the handle provide a distinctive look and feel. Fastens with M4 screw.

Clear Item No.	Black Item No.	A	L	Pack Qty.	Bulk Pack Qty.
TCH-102	TCH-105	2.76	3.35	1	50
TCH-108	TCH-111	4.13	4.72	1	50

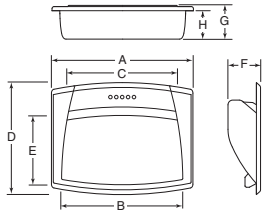
Black Coated Aluminum Blind Hole Inch



Item No.	A	B	C	D	E	F	G	H	Pack Qty.	Bulk Pack Qty.
WGH-1	4.33	3.54	.37	M6 x 1.0	1.26	.35	.94	1.30	1	25
WGH-2	4.92	4.13	.37	M6 x 1.0	1.26	.35	.94	1.30	1	25
WGH-3	5.51	4.72	.37	M6 x 1.0	1.26	.35	.94	1.30	1	25



Black Plastic Recessed Flush Mount Inch



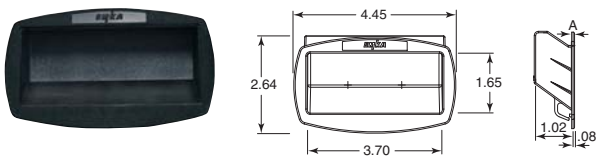
This special compact shape and the rounded lines offer a modern design. Made of glass fiber reinforced polyamide based technopolymer. Mounting choices are snap mounting or by two screws.

Available Colors: Black Orange Grey Yellow Blue Red

A	B	C	D	E	F	G	H
4.72	4.06	3.70	3.74	2.28	1.04	1.12	.94

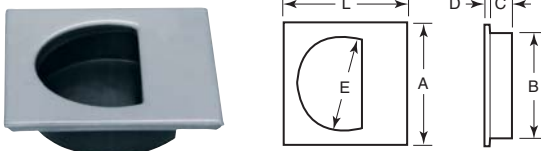
Item No.	Description	Pack Qty.	Bulk Pack Qty.
ESP-700	Flush Pull Handle Snap Mount	1	100
ESP-701	Screw Mounted Flush Pull Handle Black	1	100
ESP-702	Screw Mounted Flush Pull Handle Orange	1	100
ESP-703	Screw Mounted Flush Pull Handle Gray	1	100
ESP-704	Screw Mounted Flush Pull Handle Yellow	1	100
ESP-705	Screw Mounted Flush Pull Handle Blue	1	100
ESP-706	Screw Mounted Flush Pull Handle Red	1	100
ESP-707	Screw Mounted Flush Pull Handle With Flap Black	1	100
ESP-708	Screw Mounted Flush Pull Handle With Flap Orange	1	100
ESP-709	Screw Mounted Flush Pull Handle With Flap Gray	1	100
ESP-710	Screw Mounted Flush Pull Handle With Flap Yellow	1	100
ESP-711	Screw Mounted Flush Pull Handle With Flap Blue	1	100
ESP-712	Screw Mounted Flush Pull Handle With Flap Red	1	100

Flush Mount Recessed Black Inch



Item No.	Description	A	Pack Qty.	Bulk Pack Qty.
ELH-1144	Drawer Pull	.05 - .06	1	25
ELH-1145	Drawer Pull	.07 - .09	1	25

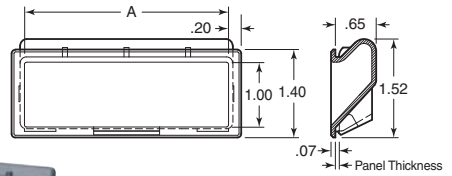
Stainless Steel - Type 304 Recessed Half Moon Inch



Recessed style is low profile. There are no protruding pieces to get work pieces, etc., caught on. Made from Type 304 stainless steel. Satin finish. Pull handles are NSF certified to meet the Food Equipment Industry Standard.

Item No.	L	A	B (Dia.)	C	D	E	Pack Qty.	Bulk Pack Qty.
SUG-99	1 ¹⁷ / ₆₄	1.732	1.382	.386	.087	1.220	1	100
SUG-102	2 ¹ / ₄	2.244	1.913	.406	.087	1.732	1	100

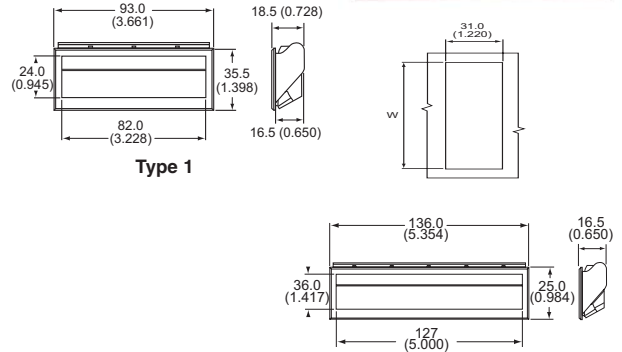
Black ABS Recessed Flush Mount Inch



For lifting or pulling. Snap-in design for fast efficient installation. One piece design in ABS low gloss black.

Item No.	Southco	Panel Thickness	A	Installation Hole .06 Radius Corners Length	Width	Pack Qty.	Bulk Pack Qty.
SC-1241	P2-41	.040 to .055	3.25	3.45	1.21	1	100
SC-1242	P2-42	.055 to .070	3.25	3.45	1.21	1	100
SC-1243	P2-43	.070 to .085	3.25	3.45	1.21	1	100
SC-1244	P2-44	.085 to .100	3.25	3.45	1.21	1	100
SC-1251	P2-51	.040 to .055	5.00	5.20	1.21	1	100
SC-1252	P2-52	.055 to .070	5.00	5.20	1.21	1	100
SC-1253	P2-53	.070 to .085	5.00	5.20	1.21	1	100
SC-1254	P2-54	.085 to .100	5.00	5.20	1.21	1	100

Black ABS HFP Series Flush Pull Handle Inch

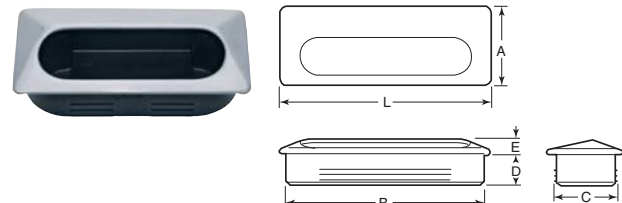


Features:

- Fits panel thicknesses from 1.00 - 2.50 mm (0.040" - 0.100")

Item No.	Type	W In	W mm	Pack Qty.	Bulk Pack Qty.
493584	1	3	88.0	1	20
493585	2	5	135.0	1	20

Stainless Steel Recessed Rectangular Inch

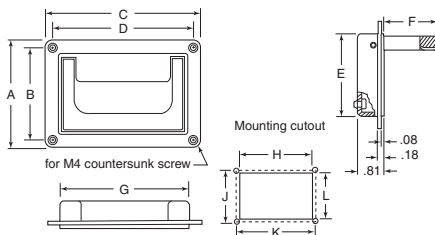


Recessed style is low profile. There are no protruding pieces to get work pieces, etc., caught on. Made from Type 304 stainless steel, with a satin finish. Pull handles are NSF certified to meet the Food Equipment Industry Standard.

Item No.	L	A	B	C	D	E	Pack Qty.	Bulk Pack Qty.
SUG-97	2 ⁵ / ₆₄	1.417	2.795	1.213	.610	.276	1	100
SUG-98	4 ¹ / ₄	1.575	3.898	1.280	.610	.295	1	100



Aluminum Recessed Collapsible Tray Handles Inch

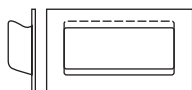


Rohde

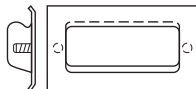
These contemporary tray handles can be used where durability and appearance are important. Mountable in front or behind the housing wall with the same cutout. The handle is spring loaded to retract when not in use.

Item No.	Cut Out											Pack Qty.	Bulk Pack Qty.
	A	B	C	D	E	F	G	H	J	K	L		
TCH-153	3.58	3.11	5.12	4.64	2.72	1.89	4.29	4.33	3.11	4.65	2.78	1	50
TCH-159	3.15	1.97	7.80	7.24	2.84	2.00	6.69	6.73	1.97	7.24	2.87	1	50

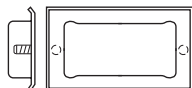
Steel and Stainless Recessed Flush Door or Drawer Pulls Inch



HG-92, 98



HG-93, 99

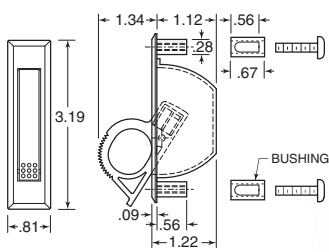


HG-97

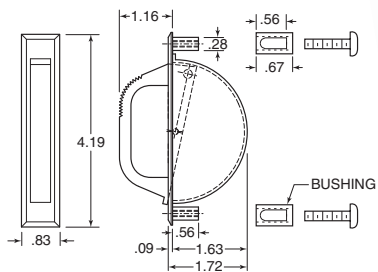
Flush pulls are available with either mounting studs or plain for spot welding. Steel is barrel zinc with clear chromate finish. Stainless steel has a brushed satin finish top side only.

w/ Studs		w/o Studs		Stud Center to Center	Plate Size	Pack Qty.	Bulk Pack Qty.
Item No.	Item No.	Thread					
Steel							
HG-93	HG-92	10-32	4	4.75 x 2.42	1	100	
Stainless							
HG-99	HG-98	10-32	4	4.75 x 2.42	1	100	
HG-97	—	10-32	4	4.75 x 2.42	1	100	

Black Plastic Recessed Pull Handles Concealed Pulls Inch



SC-670



SC-675

A pull when you need it, a flush surface when you don't. Completely enclosed housing. Black non-corrosive plastic materials, stainless steel screws and pin. Bushings and M4.2 x 1.4 screws supplied. Maximum panel thickness .25" with screws supplied.

Item No.	Southco	Installation Hole Size	Pack Qty.	Bulk Pack Qty.
SC-670	67-10	3.00 x .62	1	100
SC-675	67-25	3.94 x .62	1	100

Stainless Steel - Type 304 Recessed Flush Drawer Pull Inch



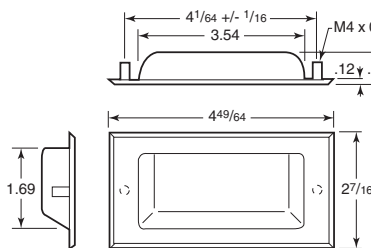
Flush Pull Handle with Male Studs



Flush Pull Handle with Female Studs



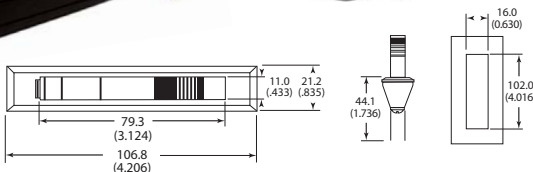
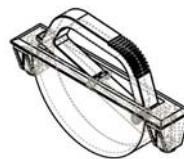
Weld On Flush Pull Handle



Stainless flush pulls are available with either male or female threaded mounting studs, or as a weld on mount. All are 304 stainless with a satin finish.

Item No.	Screw Size	Description	Pack Qty.	Bulk Pack Qty.
SUG-94	10-32	Flush Pull Handle with Male Studs	1	100
SUG-95	M4 x 25	Flush Pull Handle with Female Studs	1	100
SUG-96	—	Weld On Flush Pull Handle	1	100

HSCP Series Surface Mount Concealed Pull Handle Black Powder Coated Metal Handle Black Polyoxymethylene Body



Features:

- Supplied with screws
- Maximum hinge rotation of 168°

Item No.	Pack Qty.	Bulk Pack Qty.
HSCP100A	1	20