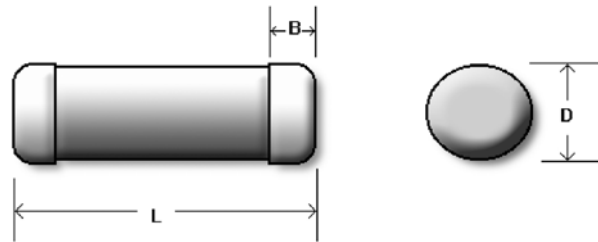


# SRS105 Spark-Noise Reduction Slug Resistor

## Features

Dedicatedly designed for high-voltage spark ignition systems. Proprietary conductive film withstands high-voltage surge impacts with long-term stability. One of few sources in the world capable of manufacturing such type of resistor.



## Dimensions

Body Length (L)	Body Diameter (D)	Cap Length (B)	Net Weight Per 1000 pcs
10.5 ±1 mm	3.8 ±0.5 mm	2.2 ±0.3 mm	390 grams

## General Specifications

Power Rating	Max Working Voltage	Max. Surge Load	Resistance Range Min.	Resistance Range Max.	Resistance Tolerance	Standard Resistance Value
1/2W	350V	20KV / 10nS	10Ω	22KΩ	±20% ~ 5%	E-24

## Performance Specifications

Characteristics	Limits
Dielectric Withstanding Voltage, VAC or DC	500
Temperature Coefficient, PPM / °C	±1200
Operating Temperature Range, °C	-55~+155
Insulation Resistance, MΩ	10 <sup>4</sup>

Tests Characteristics	Test Conditions	Limit
Short Time Overload	IEC 60115-1 4.13 5 seconds 2.5x rated voltage (not over max. overload voltage)	±(1%+0.05R)
Load Life In Humidity	IEC 60115-1 4.24 56 days at 40°C and 93% relative humidity	±(5%+0.05R)
Load Life 1,000 hours	IEC 60115-1 4.25.1 Rated load 1.5 hours ON, 0.5 hours OFF, at 70°C	±(5%+0.05R)
Vibration	MIL-STD-202 Method 204 Six hours in each parallel and axial direction w/ a simple harmonic motion having an amplitude of 1.52mm and 10 to 20,000 Hz.	±(1%+0.05R)
Terminal Endurance	IEC 60115-1 4.25.3 1000 hours at 155°C without load	±(1%+0.05R)
Thermal Shock	IEC 60115-1 4.19 -55°C 30minutes, +155°C 30minutes, 5 cycles	±(1%+0.05R)

*Special sizes, values, and specifications not listed available on special order.*

Apr. 08, 2001

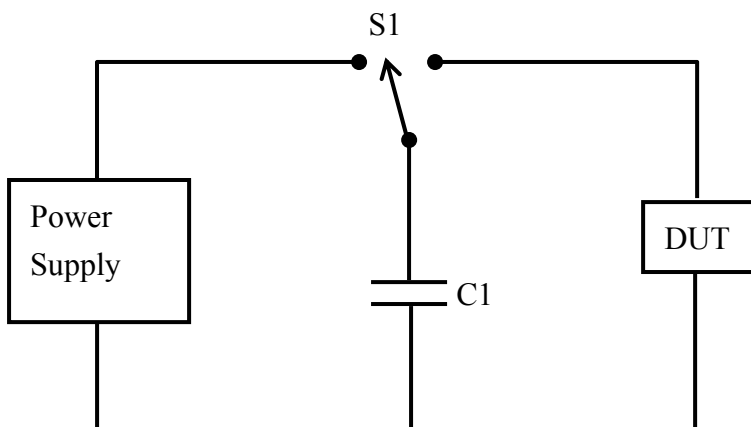
# SRS-105 Spark-Noise Reduction Slug Resistor

## Ordering Information

Type	Tolerance	Temperature Coefficient	Resistance Value	Packaging	Special Request (Optional)
SRS105	J (5%)	TK1200	10K	B	LV (Low value)

## Surge Test

Surge test circuit of 20KV / 20nS load / 500mS period / 200,000 surges:



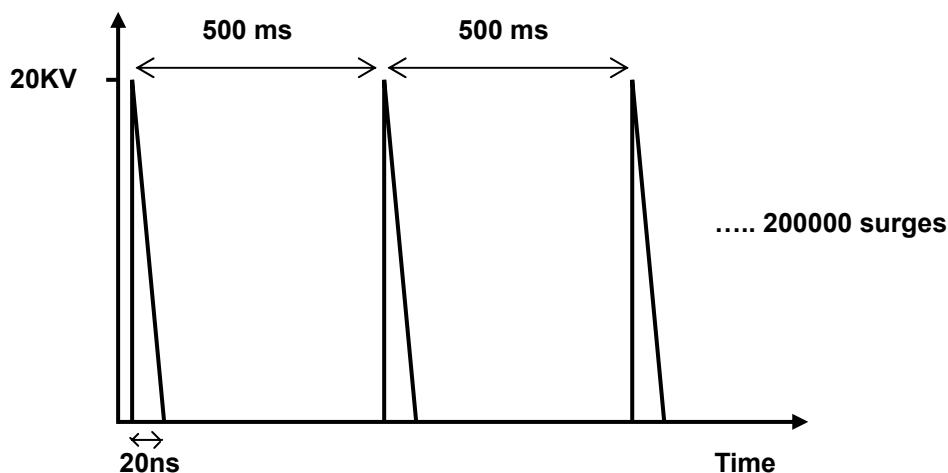
**S1:** High-voltage insulated two-throw switch

**C1:** High-voltage variable capacitor

**Power supply:** Variable 0 ~ 50KV DC

**DUT:** Device Under Test. SRS105 herein.

Surge diagram:



Apr. 08, 2001