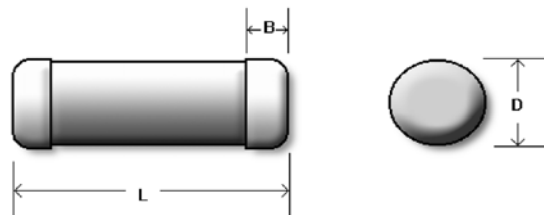


SRS400 Spark-Noise Reduction Slug Resistor

Features

Dedicatedly designed for high-voltage spark ignition systems. Proprietary conductive film withstands high-voltage surge impacts with long-term stability. One of few sources in the world capable of manufacturing such type of resistor.



Dimensions

Body Length (L)	Body Diameter (D)	Cap Length (B)	Net Weight Per 1000 pcs
16 ±1 mm	4.5 ±0.3 mm	2.2 ±0.2 mm	700 grams

General Specifications

Power Rating	Max Working Voltage	Max. Surge Load	Resistance Range Min.	Resistance Range Max.	Resistance Tolerance	Standard Resistance Value
3W	400V	50KV / 20nS	1KΩ	10KΩ	±20% ~ 5%	E-24

Performance Specifications

Characteristics	Limits
Dielectric Withstanding Voltage, VAC or DC	500
Temperature Coefficient, PPM / °C	±1200
Operating Temperature Range, °C	-55~+155
Insulation Resistance, MΩ	10 ⁴

Tests Characteristics	Test Conditions	Limit
Short Time Overload	IEC 60115-1 4.13 5 seconds 2.5x rated voltage (not over max. overload voltage)	±(2%+0.05R)
Load Life In Humidity	IEC 60115-1 4.24 56 days at 40°C and 93% relative humidity	±(5%+0.05R)
Load Life 1,000 hours	IEC 60115-1 4.25.1 Rated load 1.5 hours ON, 0.5 hours OFF, at 70°C	±(5%+0.05R)
Vibration	MIL-STD-202 Method 204 Six hours in each parallel and axial direction w/ a simple harmonic motion having an amplitude of 1.52mm and 10 to 20,000 Hz.	±(3%+0.05R)
Terminal Endurance	IEC 60115-1 4.25.3 1000 hours at 155°C without load	±(3%+0.05R)
Thermal Shock	IEC 60115-1 4.19 -55°C 30minutes, +155°C 30minutes, 5 cycles	±(3%+0.05R)

Special sizes, values, and specifications not listed available on special order.

Feb. 08, 2001

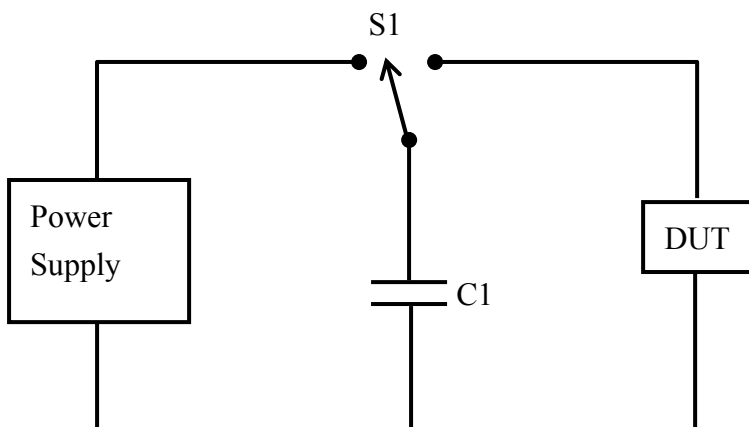
SRS-400 Spark-Noise Reduction Slug Resistor

Ordering Information

Type	Tolerance	Temperature Coefficient	Resistance Value	Packaging	Special Request (Optional)
SRS400	J (5%)	TK1200	10K	B	LV (Low value)

Surge Test

Surge test circuit of 50KV / 30nS load / 500mS period / 200,000 surges:



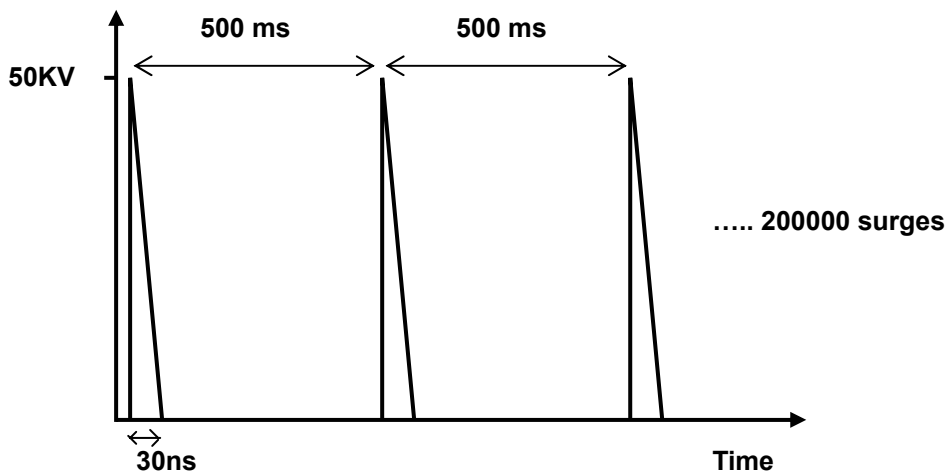
S1: High-voltage insulated two-throw switch

C1: High-voltage variable capacitor

Power supply: Variable 0 ~ 50KV DC

DUT: Device Under Test. SRS400 herein.

Surge diagram:



Feb. 08, 2001