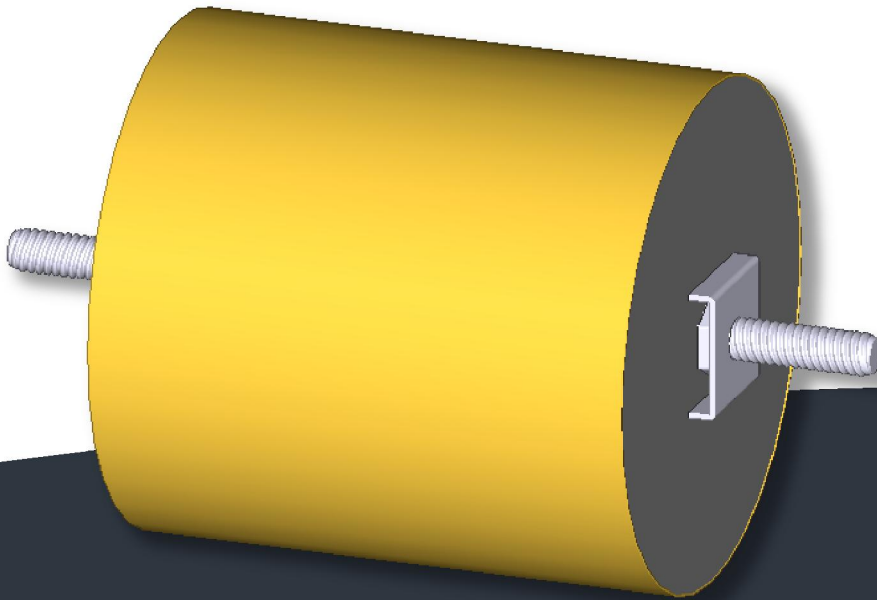


THD SERIES

TRANSIENT/HARMONIC DAMPENER



APPLICATION

- ✓ AC FILTERING

CHARACTERISTICS

- ✓ LOW ESR
- ✓ DRY CONSTRUCTION, NO LEAKING FLUIDS
- ✓ EXCELLENT VIBRATION HANDLING
- ✓ LARGE CAPACITANCE VALUES
- ✓ HIGH RMS CURRENT HANDLING

CHARACTERISTICS TABLE

CAPACITANCE (μ F)*	VAC	IRMS @ 25C	IRMS @ 65C	IRMS @85C	ESR MAX (100KHZ)	"D" MAX	"FL" +/-0.040	"L" +/-0.078
250	135	42	35	17	9.0	2.80	2.59	2.25
450	135	56	46	23	8.0	3.20	3.59	3.25
625	135	70	55	30	6.0	3.20	4.40	4.00
100	250	43	37	18	8.0	2.80	2.59	2.25
230	250	62	53	25	6.0	3.20	3.59	3.25
275	250	75	60	30	5.0	3.20	4.40	4.00
25	500	44	32	18	8.0	2.80	2.59	2.25
45	500	58	47	25	6.0	2.95	3.59	3.25
85	500	75	62	33	5.0	3.50	4.40	4.00

*OTHER VALUES AVAILABLE ON REQUEST

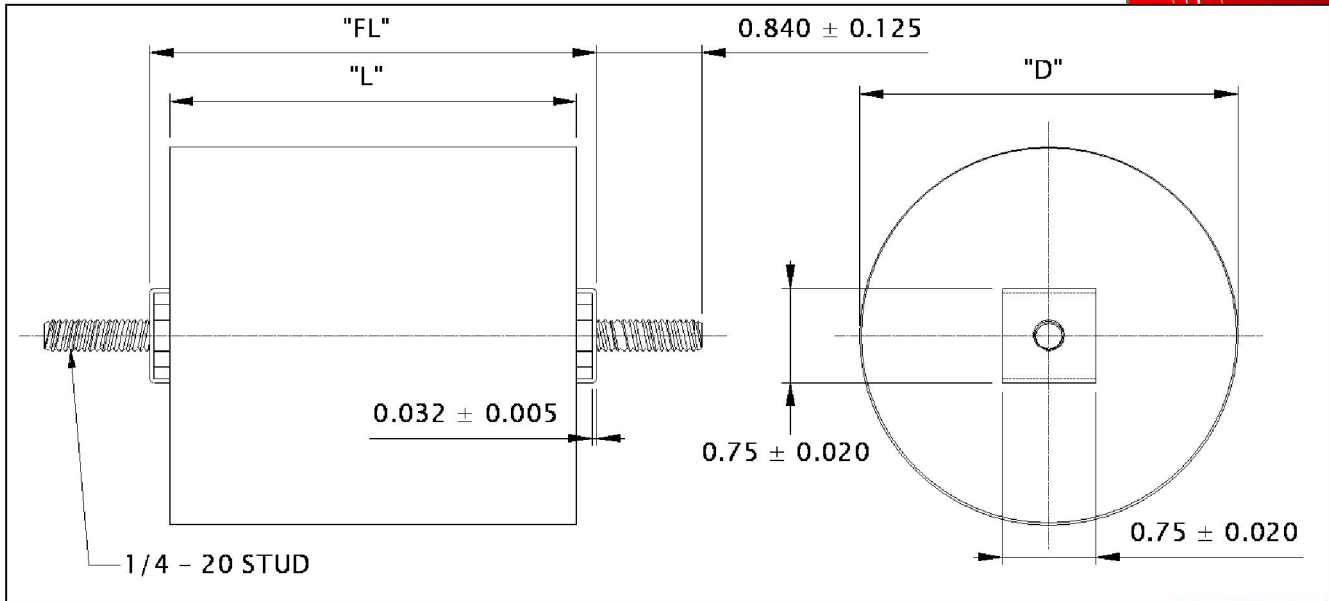
CONSTRUCTION

ELECTRODE: METALLIZED POLYPROPYLENE
CASE: FLAME RETARDANT TAPE
POTTING: URETHANE OR EPOXY (UL94-V0)
TERMINALS: ROHS COMPLIANT TIN PLATED BRASS

ELECTRICAL CHARACTERISTICS

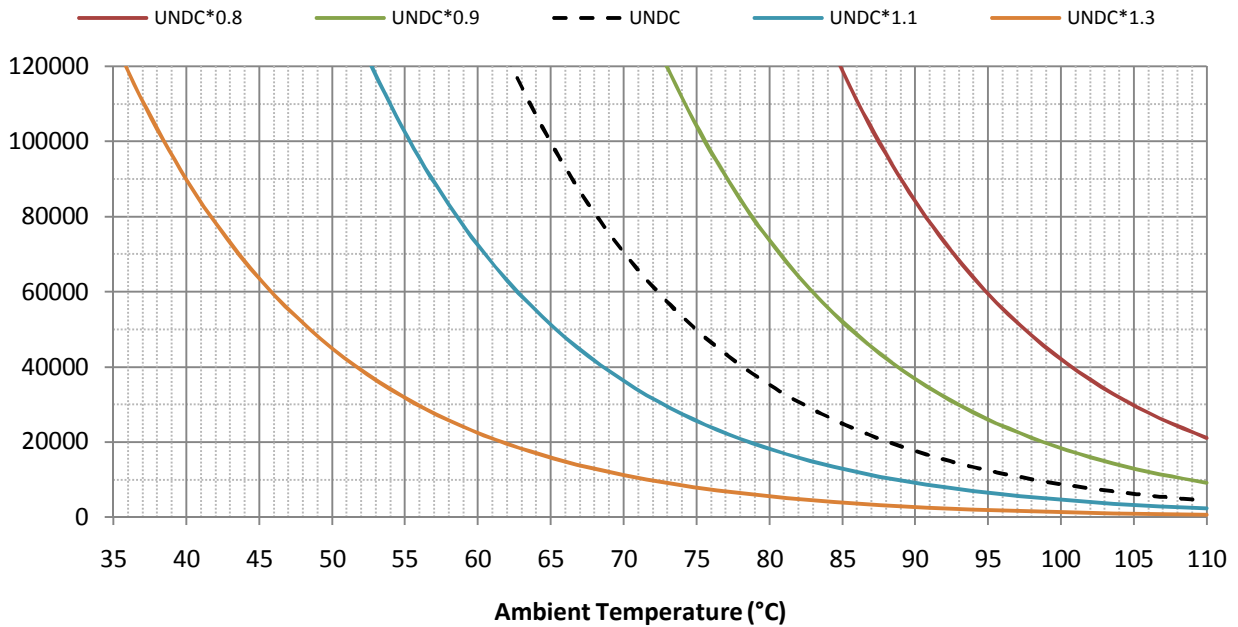
CAP: PER TABLE \pm (STANDARD TOLERANCE OF 5% AND 10%) WHEN MEASURED OR REFERRED TO AT $1k \pm 10$ Hz AND $25 \pm 5^\circ$ C.
DF: SHALL NOT BE GREATER THAN 0.8% WHEN MEASURED AT OR REFERRED TO $1k \pm 10$ Hz AND $25 \pm 5^\circ$ C.
IR: $10,000 M\Omega * \mu$ F MEASURED AT 100VDC AND $25 \pm 5^\circ$ C.
DIELECTRIC STRENGTH:
 TERMINAL TO TERMINAL (U_T OR T-T): $1.5 * U_{NDC}$ FOR 10 SECONDS
OPERATING TEMPERATURE: -40° C TO $+85^\circ$ C
RATED CURRENT: PER TABLE BASED ON 5KHZ OPERATION FREQUENCY
LIFE: 100,000 HOURS @ 65° C AND FULL RATED VOLTAGE AND CURRENT
STANDARD: IEC61071

DIMENSIONAL CHARACTERISTICS



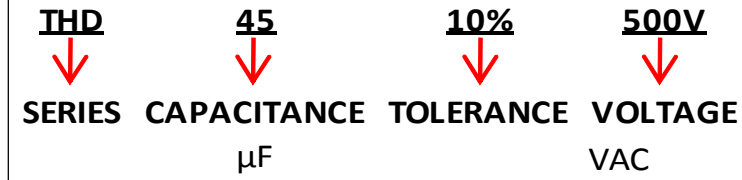
LIFE CHARACTERISTICS

Capacitor Life (hours) vs. Ambient Temperature



ORDERING INSTRUCTIONS

EXAMPLE - *THD 45 10% 500V*



RECOMMENDED TORQUE SETTINGS

*These settings are suggested to hold two parts together with such a force that is greater than any external force that could separate the two objects, yet still maintain strength of the bolt and its bond to the internal buss structure of the capacitor.

BOLT SIZE	TYPICAL (IN/LBS)	MAX (IN/LBS)
M6	41	59
¼-20	43	62
M8	89	127
3/8 – 16	134	192
M10	172	246
7/16-14	222	317
M12	265	379
½-13	295	422

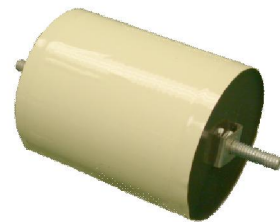
VISIT WWW.ASCAPACITOR.COM TO VIEW RELATED POWER CAPACITORS



X382 STYLE



IFP STYLE



THD STYLE

ASCAPACITORS

AMERICAN SHIZUKI CORPORATION
301 WEST "O" STREET OGALLALA, NE 69153
PHONE: 308.284.3611
FAX: 308.284.2708

SALES@ASCAPACITOR.COM WWW.ASCAPACITOR.COM