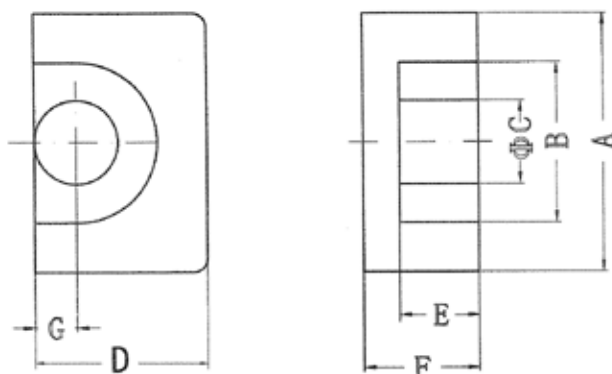


EP CORES



		EP7	EP10	EP13	EP17	EP20	EP30
DIMENSIONS (mm)	A	9.2 ± 0.2	11.5 ± 0.3	12.5 ± 0.3	18.0 ± 0.4	24.0 ± 0.5	31.0 ± 0.5
	B	7.4 ± 0.2	9.4 ± 0.2	10.0 ± 0.3	12.0 ± 0.4	16.5 ± 0.4	24.0 ± 0.4
	C	3.3 ± 0.1	3.3 ± 0.15	4.35 ± 0.15	5.68 ± 0.18	8.75 ± 0.25	14.55 ± 0.25
	D	6.35 ± 0.15	7.65 ± 0.2	8.8 ± 0.2	11.0 ± 0.25	14.95 ± 0.35	23.1 ± 0.5
	2E	5.2 ± 0.2	7.4 ± 0.2	9.2 ± 0.2	11.3 ± 0.3	14.3 ± 0.3	23.6 ± 0.4
	2F	7.4 ± 0.1	10.2 ± 0.2	12.85 ± 0.15	16.7 ± 0.3	21.4 ± 0.2	30.0 ± 0.15
	G	1.7	1.8	2.4	3.25	4.5	7.6
CORE FACTOR	$C_t(\text{mm}^{-1})$	1.5	1.7	1.24	0.84	0.51	0.35
EFFECTIVE LENGTH	$l_e(\text{mm})$	15.7	19.2	24.2	28.5	39.8	62.6
EFFECTIVE AREA	$A_e(\text{mm}^2)$	10.3	11.3	19.5	33.9	78	179
EFFECTIVE VOLUME	$V_e(\text{mm}^3)$	162	217	472	966	3100	11200
APPROX WEIGHT/set	W(g)	1.4	2.8	5	14	30	75
A_L VALUE ($nH \pm 25\%$)	JP4A	1100	1000	1460	2200	3900	6500
	JH5	2700	2600	3500	5500	9000	13000
	JH7	4000	3600	5000	8000	13500	18000
	JH10			5600	9500	1700	