

RM CORES

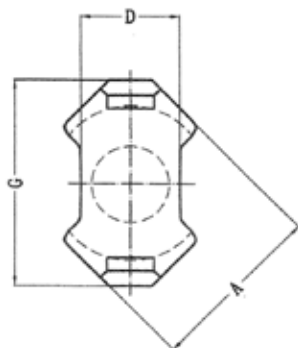


Fig1

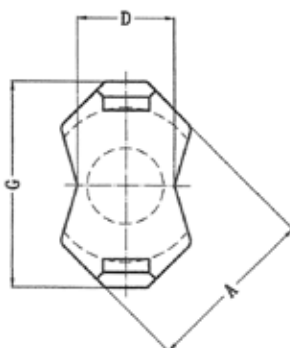
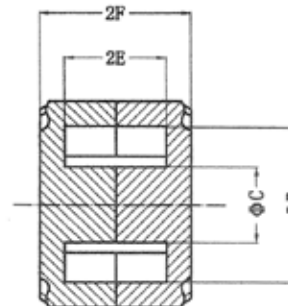


Fig2



TYPE		RM4	RM5	RM6	RM7	RM8	RM10	RM12	RM14
Fig		1	1	2	2	1	1	1	1
DIMENSIONS (mm)	A	9.6 ± 0.2	12.05 ± 0.25	14.4 ± 0.3	16.85 ± 0.35	19.3 ± 0.4	24.2 ± 0.5	29.2 ± 0.6	34.1 ± 0.6
	B	8.15 ± 0.2	10.4 ± 0.2	12.65 ± 0.25	15.4max	17.3 ± 0.3	20.7 ± 0.5	25.5 ± 0.5	29.6 ± 0.6
	C	3.8 ± 0.1	4.8 ± 0.1	6.3 ± 0.1	7.1 ± 0.15	8.4 ± 0.15	10.7 ± 0.2	12.6 ± 0.2	14.7 ± 0.3
	D	4.5 ± 0.1	6.6 ± 0.2	8.0 ± 0.2		10.75 ± 0.25	13.25 ± 0.25	15.85 ± 0.25	18.7 ± 0.3
	2E	7.2 ± 0.2	6.5 ± 0.2	8.2 ± 0.2	8.15 ± 0.25	11 ± 0.2	12.1 ± 0.3	17.1 ± 0.3	21.1 ± 0.3
	2F	10.4 ± 0.1	10.4 ± 0.1	12.4 ± 0.1	13.4 ± 0.1	16.4 ± 0.1	18.6 ± 0.1	24.5 ± 0.1	30.1 ± 0.1
	G	10.75 ± 0.25	14.3 ± 0.3	17.55 ± 0.35	19.9 ± 0.4	22.75 ± 0.45	27.8 ± 0.7	36.7 ± 0.7	41.5 ± 0.7
CORE FACTOR	$C_1(\text{mm}^{-1})$	1.69	0.935	0.784	0.68	0.604	0.462	0.388	0.353
EFFECTIVE LENGTH	$l_e(\text{mm})$	23.3	23.2	29.2	30	38.4	44.6	56.6	70
EFFECTIVE AREA	$A_e(\text{mm}^2)$	13.8	24.8	37.0	44.1	63	96.6	146	198
EFFECTIVE VOLUME	$V_e(\text{mm}^3)$	322	574	1090	1325	2440	4310	8340	13900
APPROX WEIGHT/set	$W(\text{g})$	1.7	3.3	5.2	7.7	13	23	45	74
A_L VALUE (nH ± 25%)	JP4A	950	1800	2350	2700	3250	4400	5500	6250
	JH5	2500	4500	5750			11000	13300	
	JH7			600		8000			
	JH10	3500	6700	8600	6600	12500	16000		