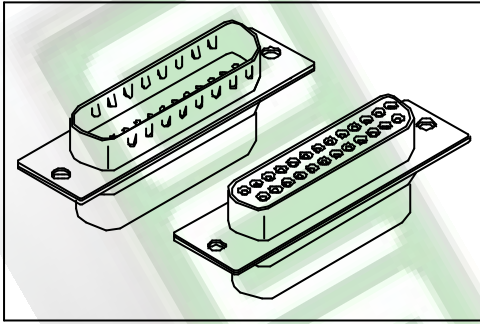


7908 Series

D-SUB Crimp Type



Material:

Housing: 30% Glass filled PBT UL94V-0.

Contacts: Brass.

Terminal Plating: Selective plated.

Recommend Wire: 24AWG to 28AWG.

Electrical Characteristics:

Current Rating: 1 AMP.

Insulator Resistance: 5000M Ω min. at DC 500V.

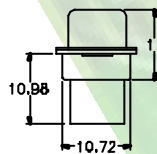
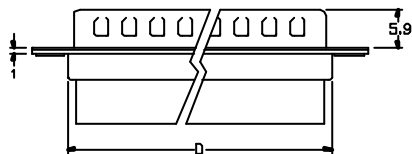
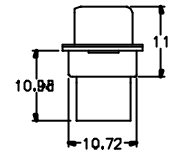
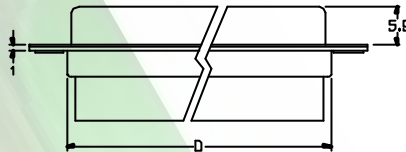
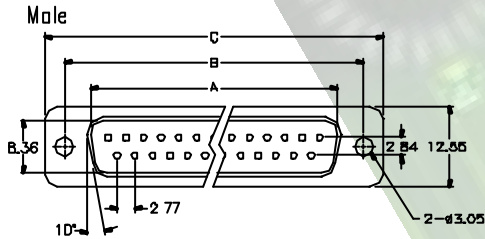
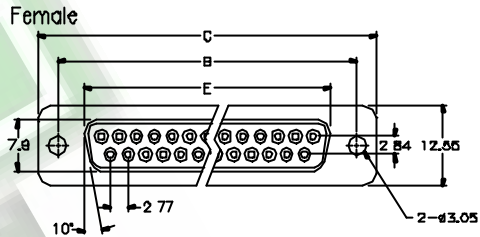
Contact Resistance: 20m Ω max. at DC 100mA.

Operating Temperature: -55°C ~ +105°C.

Features:

* UL cUL Listing.

Mates with: 7902, 7905, 7906, 7926, 7938



Position	Dimension				
	A	B	C	D	E
9	16.92	24.89	30.81	19.28	16.33
15	25.25	33.32	39.14	27.51	24.66
25	38.06	47.04	53.04	41.30	38.38
37	55.42	63.50	69.32	57.71	54.84
50	52.86	61.11	66.90	55.30	52.34

Ordering information

7908- 50 M I
 Series Position M: Male T: Tin Shell
 F: Female E: Zinc Shell

N1
 Blank: Standard Type
 N1: See Page B52

7908- PIN- M
 Series 5K Pins Per Reel M: Male
 F: Female