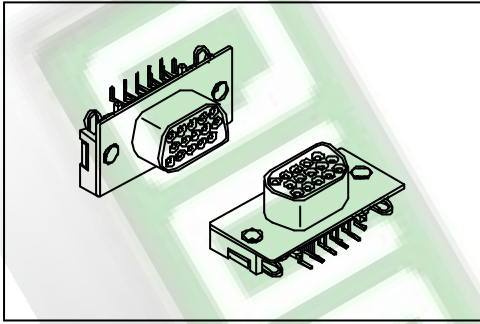


7912 Series

Slim H.D. D-SUB Right Angle Type



Material:

Housing: High temperature housing UL94V-0 withstands IR and VPR soldering methods.

Contacts: Phosphor Bronze.

Plating: Selective Gold plated.

Electrical Characteristics:

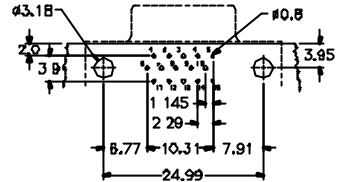
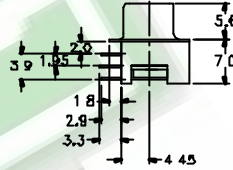
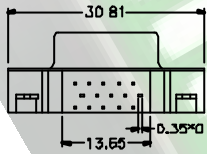
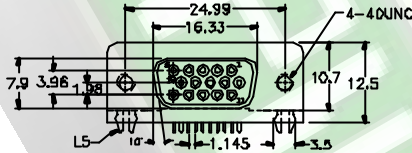
Current Rating: 1 AMP.

Insulator Resistance: 5000MΩmin. at DC 500V.

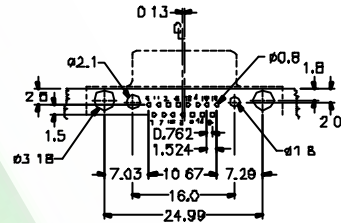
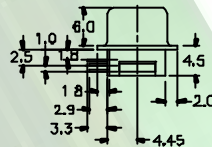
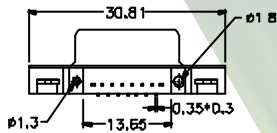
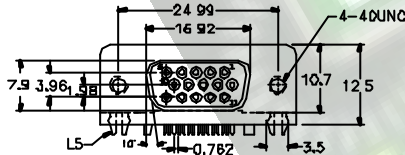
Contact Resistance: 20mΩmax. at DC 100mA.

Operating Temperature: -65°C ~ +125°C

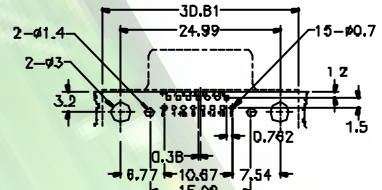
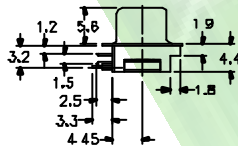
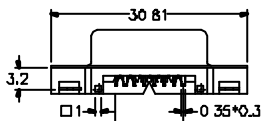
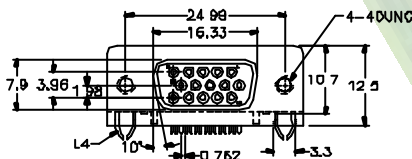
Max Processing Temperature: 230°C for 30~60 seconds.



Footprint 1 P.C. Board Layout
7912-15FCR1/L5



Footprint 2 P.C. Board Layout
7912-15FCR2/L5



Footprint 3 P.C. Board Layout
7912-15FCR3/L4

Ordering information

7912-	15	F	C	R	1	/L4
Series	Position	Female	C: Selective Gold Plated	R: Right Angle	1: Footprint 1	Lock Type See Above
					2: Footprint 2	
					3: Footprint 3	