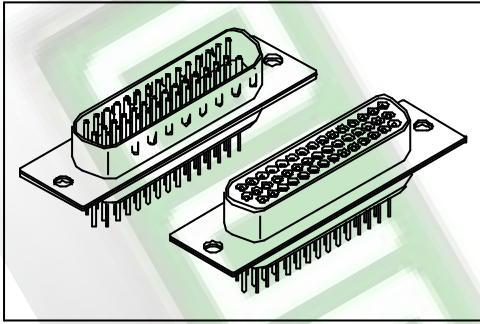


# 7915 Series

## H.D. D-SUB Straight Type



### Material:

**Housing:** 30% Glass filled PBT UL94V-0.

**Contacts:** Brass.

**Plating:** Gold plated.

### Electrical Characteristics:

**Current Rating:** 1 AMP.

**Insulator Resistance:** 5000MΩmin. at DC 500V.

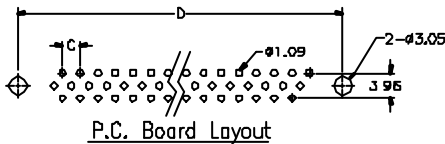
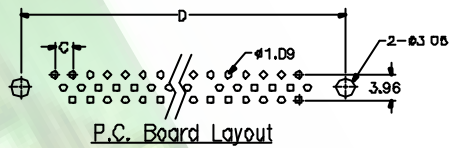
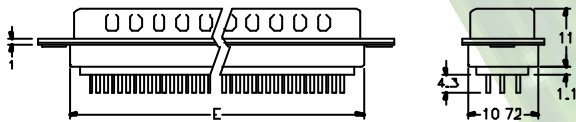
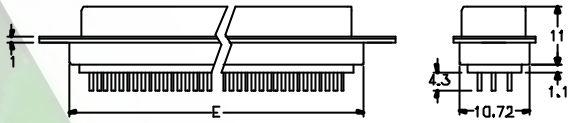
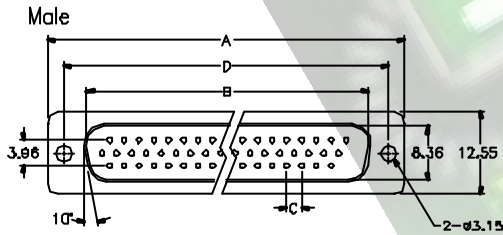
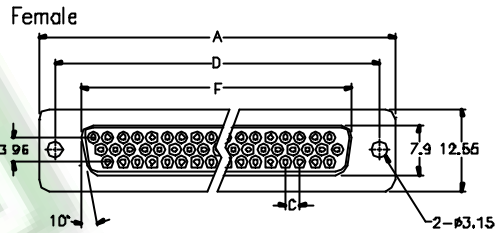
**Contact Resistance:** 20mΩmax. at DC 100mA.

**Operating Temperature:** -55°C ~ +105°C.

### Features:

\* UL cUL Listing.

Mates with: 7917, 7918.



Position	Dimension					
	A	B	C	D	E	F
15	30.8	16.9	2.29	24.89	19.3	16.3
26	39.1	25.3	2.29	33.32	27.5	24.7
44	53.0	40.1	2.29	47.04	41.3	38.4
62	69.3	56.8	2.41	63.50	57.7	54.8

## Ordering information

7915- 62 M I  
 Series Position M. Male T. Tin Shell  
 F. Female E. Zinc Shell

B C  
 B: Black C. Selective Gold Plated  
 U: Blue  
 W: White

N1  
 Blank: Standard Type  
 N1. See Page B52