

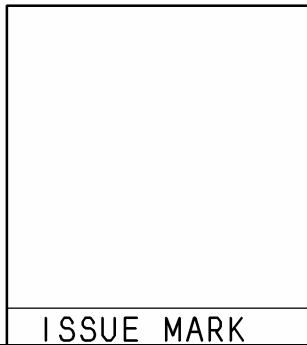
③ YAZAKI PART NO. AND CH. CODE	COLOR
② 7123-7564	NATURAL
7123-7564-30	BLACK
7123-7564-40	GRAY

③ 注記

1. かん合相手品番 : 7222-7564,
7222-7564-30,
7222-7564-40

③ NOTE

1. MATING PART NO. : 7222-7564,
7222-7564-30,
7222-7564-40



④	10.11.15	CHANGED PART NAME	C10-ZA99	R. B						MATL. SPEC. ③PBT		TREAT. & FIN.			
③	09.06.15	DELETED VIEWS, ETC.	C09-Z446	T. K	CUSTOMER					CUSTOMER PART NO.		CUSTOMER DWG NO.			
②	91.07.12	ADDED PART NO.	C91-L555	T. T											
①	90.10.10	CHANGED FORM	C90-M057	K. S	OFFICE					TRIAL PART NO.		NAME ④ SWP-TYPE HOUSING			
	88.02.16	NEW	8MC-0231	S. K	VENDOR							16P FEMALE			
LET	DATE	REVISION RECORD	NO.	CHKD	VENDOR NO.										
③ GENERAL TOLERANCE										PART NO. 7123-7564 ETC.					
	10MAX	50MAX	100MAX	250MAX	2500VR	ANGLE	ECCENT	DWG TYPE	DWG SOURCE	DWG DATE	UNIT	SCL	ANGLE	CH. CODE	SET DWG NO.
A	±0.15	±0.2	±0.3	±0.5	±0.75	±30'	0.1	R	NEW	88.02.16	mm	③ 2:1	3		
B	±0.2	±0.3	±0.55	±0.95	±1.4	±30'	0.1	APPROVED	CHECKED	CHECKED	DESIGN	DRAWN	DWG NO. ④ 7123-7564:R		
©	±0.3	±0.5	±0.8	±1.4	±2	±30'	0.15	S. MIZUSE		R. CABANGAL	S. KODAMA	R. BUDIAO	YAZAKI CORPORATION		
SPECIFIED					MASS										
					10.11.15										

1

2

3

