

FEATURES AND SPECIFICATIONS

Features and Benefits

- Sizes 4 to 50 circuits
- Dual beam contact design ensures reliable electrical performance
- Molded-in void locations offered for polarization to mating connector
- Can be used as either a top or bottom entry receptacle
- Pegs offer press-fit retention to PC board

Reference Information

Product Specification: PS-79107

Packaging: Tube or tape and reel

UL File No.: E29179

CSA File No.: LR19980

Mates With: 0.50mm square pin headers [87049](#), [87089](#) and [87267](#)

Designed In: Millimeters

Electrical

Voltage: 125V

Current: 1.0A

Contact Resistance: 25mΩ max.

Dielectric Withstanding Voltage: 1250V

Insulation Resistance: 1000 MΩ min.

Mechanical

Mating Force: 8 oz max.

Unmating Force: 1.5 oz min.

Normal Force: 100g

Durability: 15μ" Gold contacts—50 cycles min.

30μ" Gold contacts—100 cycles min.

Physical

Housing: Black glass-filled LCP, UL 94V-0

Contact: Phosphor Bronze

Plating: See Table

Operating Temperature: -55 to +105°C



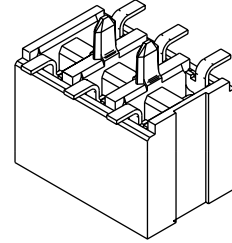
2.00mm (.079") Pitch

Milli-Grid™

Board-to-Board Receptacle

79109

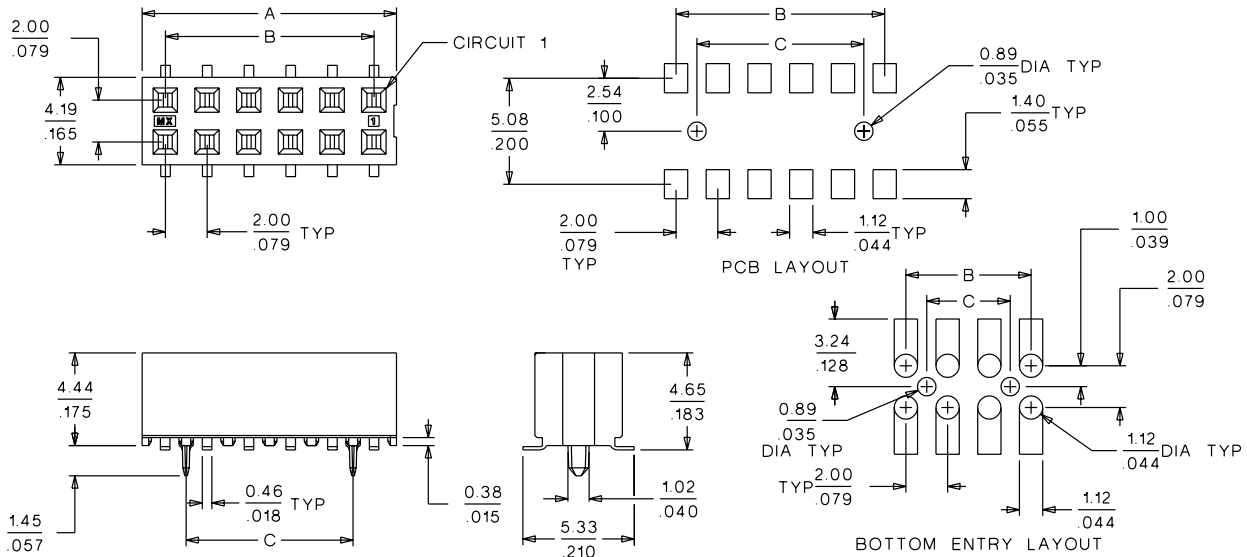
Vertical, Dual Row, Top/ Bottom Entry, SMT, with Pegs



B

2.00 to 2.50mm (.079 to .098") Pitch

CATALOG DRAWING (FOR REFERENCE ONLY)



ORDERING INFORMATION AND DIMENSIONS

Circuits	Order No.				Dimension		
	15μ" Gold		30μ" Gold		A	B	C
	Tube	Tape and Reel	Tube	Tape and Reel			
4	79109-0201	*	79109-0251	*	4.19 (.165)	2.00 (.079)	
6	79109-0202	79109-8202	79109-0252	79109-8252	6.19 (.244)	4.00 (.157)	2.00 (.079)
8	79109-0203	79109-8203	79109-0253	79109-8253	8.19 (.322)	6.00 (.236)	4.00 (.157)
10	79109-0204	79109-8204	79109-0254	79109-8254	10.19 (.401)	8.00 (.315)	6.00 (.236)
12	79109-0205	79109-8205	79109-0255	79109-8255	12.19 (.480)	10.00 (.394)	8.00 (.315)
14	79109-0206	79109-8206	79109-0256	79109-8256	14.19 (.559)	12.00 (.472)	10.00 (.394)
16	79109-0207	79109-8207	79109-0257	79109-8257	16.19 (.637)	14.00 (.551)	12.00 (.472)
18	79109-0208	79109-8208	79109-0258	79109-8258	18.19 (.716)	16.00 (.630)	14.00 (.551)
20	79109-0209	79109-8209	79109-0259	79109-8259	20.19 (.795)	18.00 (.709)	16.00 (.630)
22	79109-0210	79109-8210	79109-0260	79109-8260	22.19 (.874)	20.00 (.787)	18.00 (.709)
24	79109-0211	79109-8211	79109-0261	79109-8261	24.19 (.952)	22.00 (.866)	20.00 (.787)
26	79109-0212	79109-8212	79109-0262	79109-8262	26.19 (1.031)	24.00 (.945)	22.00 (.866)
28	79109-0213	79109-8213	79109-0263	79109-8263	28.19 (1.110)	26.00 (1.024)	24.00 (.945)
30	79109-0214	79109-8214	79109-0264	79109-8264	30.19 (1.188)	28.00 (1.102)	26.00 (1.024)
32	79109-0215	79109-8215	79109-0265	79109-8265	32.19 (1.267)	30.00 (1.181)	28.00 (1.102)
34	79109-0216	79109-8216	79109-0266	79109-8266	34.19 (1.346)	32.00 (1.260)	30.00 (1.181)
36	79109-0217	79109-8217	79109-0267	79109-8267	36.19 (1.425)	34.00 (1.338)	32.00 (1.260)
38	79109-0218	79109-8218	79109-0268	79109-8268	38.19 (1.504)	36.00 (1.417)	34.00 (1.338)
40	79109-0219	79109-8219	79109-0269	79109-8269	40.19 (1.582)	38.00 (1.496)	36.00 (1.417)
42	79109-0220	79109-8220	79109-0270	79109-8270	42.19 (1.661)	40.00 (1.575)	38.00 (1.496)
44	79109-0221	79109-8221	79109-0271	79109-8271	44.19 (1.740)	42.00 (1.654)	40.00 (1.575)
46	79109-0222	79109-8222	79109-0272	79109-8272	46.19 (1.818)	44.00 (1.732)	42.00 (1.654)
48	79109-0223	79109-8223	79109-0273	79109-8273	48.19 (1.897)	46.00 (1.811)	44.00 (1.732)
50	79109-0224	79109-8224	79109-0274	79109-8274	50.19 (1.976)	48.00 (1.890)	46.00 (1.811)

* Contact Molex