



WE'RE MOVING LIGHT

LED INDICATION



We're Moving Light

LIGHT PIPES

The Light Pipe Leader

Bivar has been in the Light Pipe Business since 1996 and has pioneered the technology around the world.

Bivar has the top selling core offering in the product category.

Types of Light Pipes



Rigid Polycarbonate

- BIVAR uses only the highest quality, optical grade polycarbonate in our Rigid Light Pipes.
- All BIVAR Light Pipe material is UL94V-0 Flame rated.



Flexible Optical Fiber

- BIVAR uses only the highest quality plastic optical fiber (POF) and UL94V-0 PVC Alloy in our Flexible Light Pipes.
- BIVAR LEDs are used as the LED light source.

Light Pipes

Rigid

Vertical Press Fit Mount



PLP1



PLP2



PLP5



PLW5

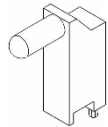


PLPC

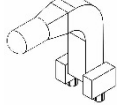


PLPQ

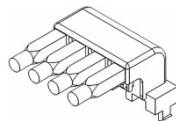
Right Angle Board Mount



SLP



LP



RLP

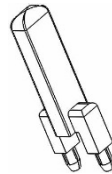


PBLP

Vertical Board Mount



VLP



VLPR

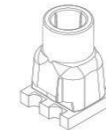
Flexible

Surface Mount LED



SMD LED System

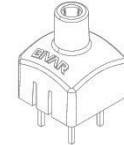
SMFLP



Built-In SMD LED System

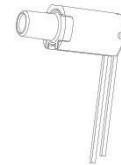
SMTV01

Through-Hole LED



Built-In Superflux LED System

ORFLP



Built-In Through Hole LED System

FLP

We're Moving Light

LED

LEDs and Light Pipes

Bivar entered the LED business in the mid-90's, shortly after the formation of the LED Indication Product Group.

Initially through-hole 3mm and 5mm styles, the offering quickly expanded to surface mounts and continues to evolve with technology.

Bivar LEDs are manufactured to Bivar specifications.

LEDs and Light Pipes

Selecting the Right LED

LEDs with narrow viewing angles should be selected to focus a maximum amount of light into the light pipe while minimizing bleed to adjacent light pipes or the surrounding area.

Bivar Through-Hole and Surface Mount LEDs are ideal for Light Pipe applications.



LEDs

The Bivar LED offering is structured to provide a wide range of options for use with **Light Pipes**, and additional visible and non-visible types for **application-specific requirements**.

Through-Hole



Surface Mount



Ultraviolet



Infrared



LED
Replacement Lamps



LEDs

Through-Hole



1.8mm



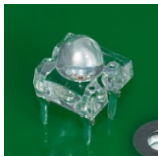
3mm



5mm



Rectangular

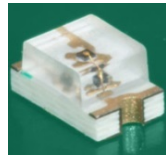


Superflux

Surface Mount



0603



0805



1204



1206



1210



PLCC



Mid-Power

NEW

Ultraviolet



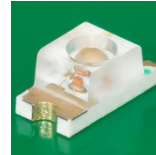
3mm



5mm



0603



1206

Infrared



5mm

LED Replacement Lamp



BA15D Bayonet Cap



T1 3/4 Midget Groove



T1 3/4 Midget Flange



T3 1/4 BA9s Cap Midget Flange



T5.5 Telephone Slide Base

We're Moving Light

BOARD MOUNT LED ASSEMBLIES

Board Mount LED Assemblies

LED circuit board indicators available in single and multiple levels and color combinations

Right Angle LED Assemblies



Vertical LED Assemblies

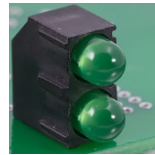


Board Mount LED Assemblies

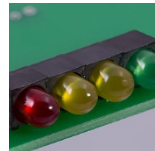
Right Angle LED Assemblies



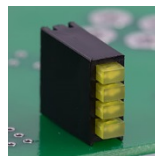
1.8mm



3mm



5mm



Rectangular

Vertical LED Assemblies



3mm



5mm



Rectangular

We're Moving Light

PANEL MOUNT LED ASSEMBLIES

Panel Mount LED Assemblies

A sub-assembly that includes an LED plus a housing with a lens covering designed to mount directly at the point of indication. Located where point of indication is not in close proximity to the PCB.

Panel Mount LED Indicators



Panel Mount LED Indicators with Wires



Panel Mount LED Assemblies

Panel Mount
LED Indicators

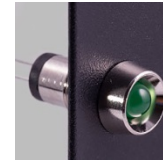


Metal



Plastic

Panel Mount
LED Indicators with Wires



Metal



Plastic

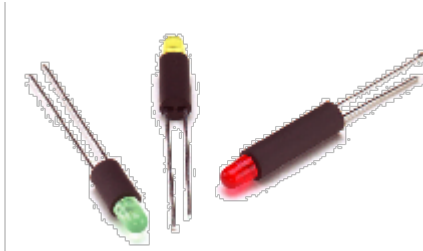
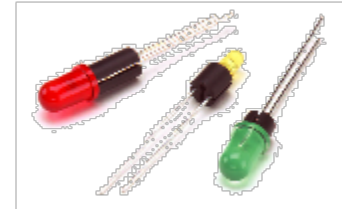
We're Moving Light

LED MOUNTS AND HOLDERS

LED Mounts & Holders



Bivar invented the LED mount and the LED holder and still has the largest selection and highest quality!



We're Moving Light

LED Mounts & Holders

Clips & Rings



Panel Mount Clips



Panel Mount Clips & Rings

LED Mounts



Extruded Self-Retaining

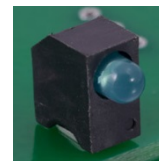


Molded Self-Retaining



Molded Individual

LED Holders



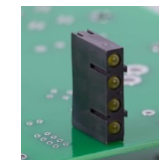
Single Level



Double Level



Triple Level



Quadruple Level

Thank You!

