

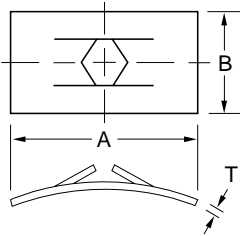
# PUSH-ON TYPE Fasteners (round studs)

**MATERIAL:** All parts are SPRING STEEL, heat treated, unless otherwise specified. The only variations available are those shown with suffix letters in the manufacturer's number:

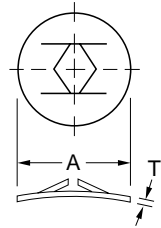
SS - Stainless Steel  
P - Phosphor Bronze

BE - Beryllium Copper  
S - Low Carbon Steel

**DESIGN VARIATIONS:** Parts shown as standard or with design variations are available only in that particular design.  
**FINISH:** See Page C75 for available finishes.

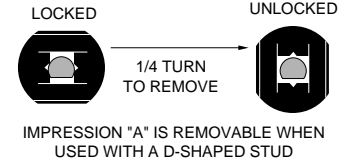
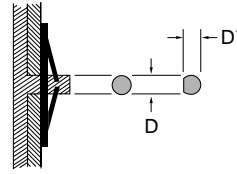


STANDARD RECTANGULAR



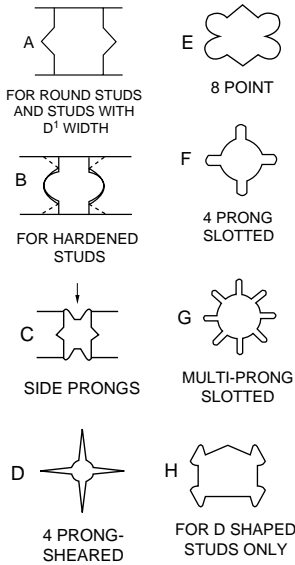
STANDARD ROUND

### STUD DETAILS

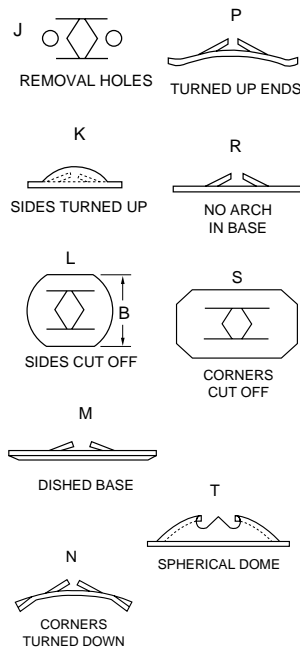


The INCH dimensions of the listed parts are reference dimensions only. For complete design information, please request a blueprint.

### IMPRESSION VARIATIONS



### SHAPE VARIATIONS



SPAENAUR No.	Manufacturer's No.	Stud Size		Type	Design Variation	A Length or Dia.	B Width	T Mat'rl. Thick.
		D Dia.	D' Width					
—	C09850-017	.100-.106	—	Rect.	Std.	1.31	1.31	.017
—	C00720SS-012	.101-.104	—	Round	Std.	.28	—	.012
—	C00720-012	—	—	Round	Std.	.28	—	.012
—	C11975-010	.104-.108	—	Round	Std.	.28	—	.010
<b>202-118</b>	C13000-012-4	.106	—	Rect.	Std.	.58	.38	.012
—	C09779SS-010	.108-.112	—	Round	Std.	.28	—	.010
—	C09779-010	—	—	Round	Std.	.28	—	.010
—	C07333-012	.112-.120	—	Round	L	.38	.34	.012
—	C06809-012	.115	—	Rect.	Std.	.58	.31	.012
—	C14763-012	.117-.123	—	Round	L	.38	.34	.012
—	C14763-017	—	—	Round	L	.38	.34	.017
—	C08750-012	.118-.120	—	Round	Std.	.28	—	.012
—	C10985-012	.119-.125	—	Round	M	.63	—	.012
<b>TN-35</b>	C01128-012-27	.120-.125	—	Rect.	P	.80	.31	.012
—	C01128-017	—	—	Rect.	P	.80	.31	.017
—	C17571-012	.121	—	Round	DR	.38	—	.012
—	C70833-010	.122-.128	—	Round	G	.26	—	.010
—	C01037-010	.124-.126	—	Round	L	.38	.34	.010
<b>◆TN-167</b>	C12042-017-4	—	—	Round	L	.38	.34	.017
<b>TN-167ZP</b>	C12042-017-3B	—	—	Round	L	.38	.34	.017
—	C00637-010	.125	—	Rect.	Std.	.30	.25	.010
—	C00637-012	—	—	Rect.	Std.	.30	.25	.012
<b>TN-52</b>	C00637-014-27	—	—	Rect.	Std.	.30	.25	.014
—	C18234-125	—	—	Round	FM	.56	—	.011
—	C09098-012	—	—	Rect.	Std.	.58	.25	.012
—	C09098-014	—	—	Rect.	Std.	.58	.25	.014
—	C08623-020	.085	Rect.	A	Std.	.58	.25	.020
—	C07809-010	—	Rect.	Std.	Std.	.58	.31	.010
—	C07809-012	—	Rect.	Std.	Std.	.58	.31	.012
<b>1897</b>	C00109-012-27	.085	Rect.	A	Std.	.58	.31	.012
—	C00109-014	.085	Rect.	A	Std.	.58	.31	.014
—	C08151-014	.100	Rect.	A	Std.	.58	.31	.014
<b>◆202-031</b>	C12003-012-4	.100	Rect.	A	Std.	.58	.31	.012

Continued... ◆Not necessarily Tinnerman® brand.

CATALOG 13