

Female Header

pitch 1.27mm (0.05") | Dual row | R/A

CSEB202 Series

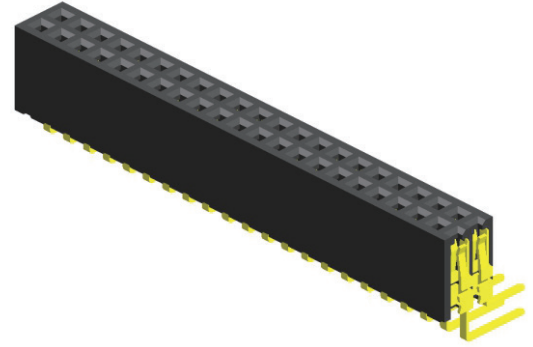
Specifications

Current Rating : 1.0 Ampere
 Insulation Resistance : 1000 MΩ Min
 Dielectric Withstanding : 300V AC
 Contact Resistance : 20 mΩ Max
 Operating Temperature : -40°C to +105°C

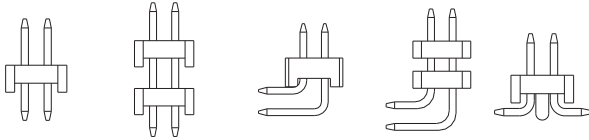
Materials

Contact Material : Phosphor Bronze
 Insulation Material : High Temperature Thermoplastic, 94V-0 LCP

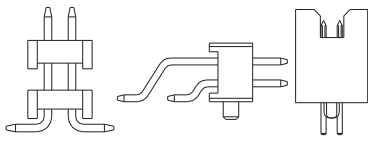
All materials must meet Greenconn's requirements for environmental protection.



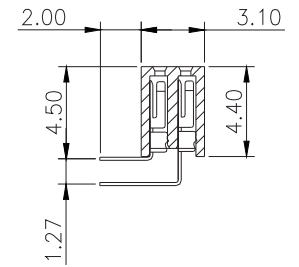
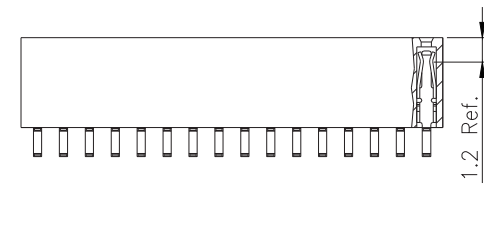
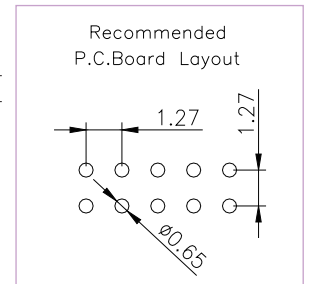
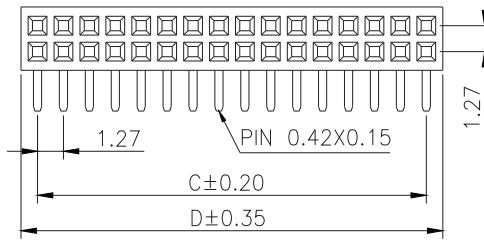
Mating with



C17 C19 C21 C22 C24



C25 C27 K01



P.S. : Suggested mating pin length : 2.0 ~ 4.2 mm

* For Coded Dimension Not Inside The Table, Please Refer To "Ordering Information"

No. of Pins/Row	Dimension Information		No. of Pins/Row	Dimension Information		No. of Pins/Row	Dimension Information		No. of Pins/Row	Dimension Information	
	C	D		C	D		C	D		C	D
03	2.54	4.16	14	16.51	18.13	27	33.02	34.64	40	49.53	51.15
04	3.81	5.43	15	17.78	19.40	28	34.29	35.91	41	50.80	52.42
05	5.08	6.70	16	19.05	20.67	29	35.56	37.18	42	52.07	53.69
06	6.35	7.97	17	20.32	21.94	30	36.83	38.45	43	53.34	54.96
07	7.62	9.24	18	21.59	23.21	31	38.10	39.72	44	54.61	56.23
08	8.89	10.51	19	22.86	24.48	32	39.37	40.99	45	55.88	57.50
09	10.16	11.78	20	24.13	25.75	33	40.64	42.26	46	57.15	58.77
10	11.43	13.05	21	25.40	27.02	34	41.91	43.53	47	57.42	60.04
11	12.70	14.32	22	26.67	28.29	35	43.18	44.80	48	59.69	61.31
12	13.97	15.59	23	27.94	29.56	36	44.45	46.07	49	60.96	62.58
13	15.24	16.86	24	29.21	30.83	37	45.72	47.34	50	62.23	63.85
			25	30.48	32.10	38	46.99	48.61			
			26	31.75	33.37	39	48.26	49.88			

Ordering Information

Standard Packaging : Tube

CSEB2 - A001C1AC
 Height Option (H)
 No. of Pins per Row
 Standard Plating : Tin
 : Gold Flash
 Selective Plating : Gold Flash / Tin