

Female Header

pitch 1.27mm (0.05") | Dual row | S.M.T.

CSEC208 Series

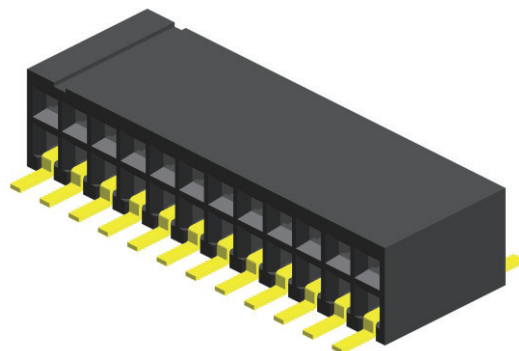
Specifications

Current Rating :	1.0 Ampere
Insulation Resistance :	1000 MΩ Min
Dielectric Withstanding :	300V AC
Contact Resistance :	20 mΩ Max
Operating Temperature :	-40°C to +105°C

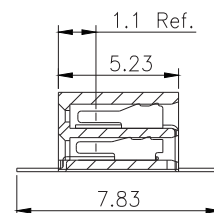
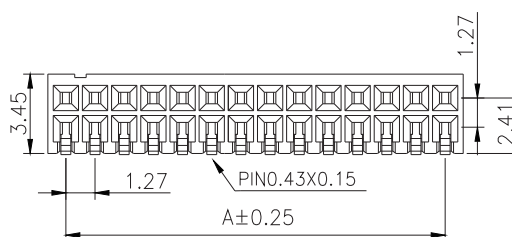
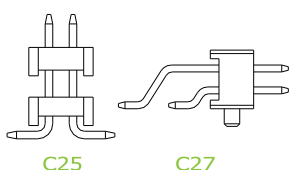
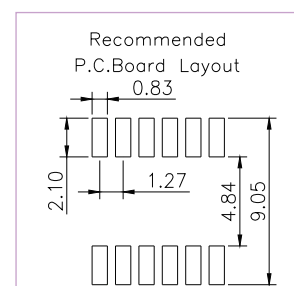
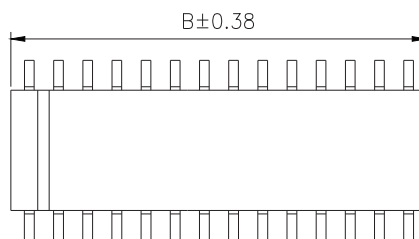
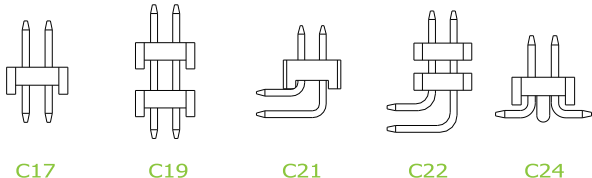
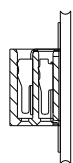
Materials

Contact Material :	Phosphor Bronze
Insulation Material :	High Temperature Thermoplastic, 94V-0 LCP

All materials must meet Greenconn's requirements for environmental protection.



Mating with



P.S. : Suggested mating pin length : 2.0 ~ 5.0 mm

* For Coded Dimension Not Inside The Table, Please Refer To "Ordering Information"

No. of Pins/Row	Dimension Information		No. of Pins/Row	Dimension Information		No. of Pins/Row	Dimension Information		No. of Pins/Row	Dimension Information	
	A	B		A	B		A	B		A	B
02	1.27	2.84	11	12.70	14.27	21	25.40	26.97	31	38.10	39.67
03	2.54	4.11	12	13.97	15.54	22	26.67	28.24	32	39.37	40.94
04	3.81	5.38	13	15.24	16.81	23	27.94	29.51	33	40.64	42.21
05	5.08	6.65	14	16.51	18.08	24	29.21	30.78	34	41.91	43.48
06	6.35	7.92	15	17.78	19.35	25	30.48	32.05	35	43.18	44.75
07	7.62	9.19	16	19.05	20.62	26	31.75	33.32	36	44.45	46.02
08	8.89	10.46	17	20.32	21.89	27	33.02	34.59	37	45.72	47.29
09	10.16	11.73	18	21.59	23.16	28	34.29	35.86	38	46.99	48.56
10	11.43	13.00	19	22.86	24.43	29	35.56	37.13	39	48.26	49.83
			20	24.13	25.70	30	36.83	38.40	40	49.53	51.10

Ordering Information

Standard Packaging : Tube

CSEC2

Height Option (H)

-

No. of Pins per Row

↓

Standard Plating

: Gold Flash

Selective Plating

: Tin

: Gold Flash / Tin

A001C1AC