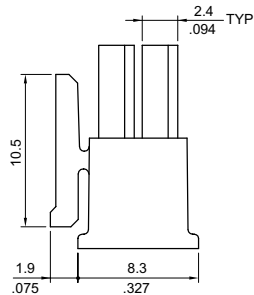
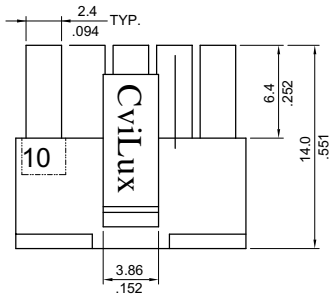
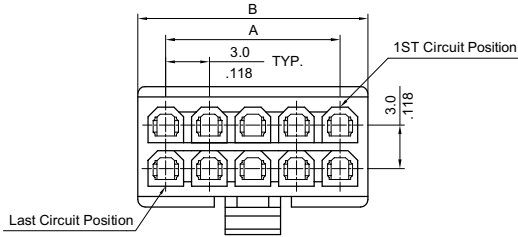


CP35 Series Receptacle Connectors

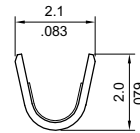
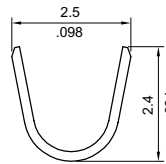
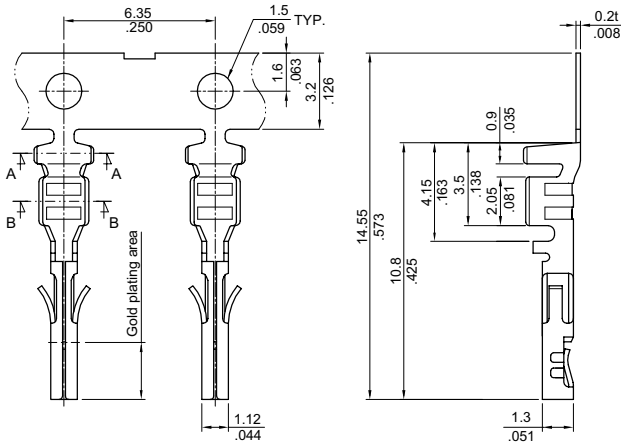
- With locking latch
- Available in 2 through 24 circuits
- Can be used CP35 Crimp terminal
- Thermal Plastics UL 94V-0, Color Black
- Terminal accommodated AWG #20 ~ #24



:E159616



| Circuits | Dimension | |
|----------|-------------|-------------|
| | A | B |
| 2 | — | 3.9(.154) |
| 4 | 3.0(.118) | 6.9(.272) |
| 6 | 6.0(.236) | 9.9(.390) |
| 8 | 9.0(.354) | 12.9(.508) |
| 10 | 12.0(.472) | 15.9(.626) |
| 12 | 15.0(.591) | 18.9(.744) |
| 14 | 18.0(.709) | 21.9(.862) |
| 16 | 21.0(.827) | 24.9(.980) |
| 18 | 24.0(.945) | 27.9(1.098) |
| 20 | 27.0(1.063) | 30.9(1.217) |
| 22 | 30.0(1.181) | 33.9(1.335) |
| 24 | 33.0(1.299) | 36.9(1.453) |



| Part No. | Wire Gauge | Insulation Diameter | Finish | Reel QTY |
|-------------|-------------|---------------------|---|------------|
| CP35TN21PES | AWG #20-#24 | 2.50 (.098) MAX. | Tin-lead over Nickel | 12,000 PCS |
| CP35TN2APES | AWG #20-#24 | 2.50 (.098) MAX. | Selective Gold flash over Nickel | 12,000 PCS |
| CP35TN2BPES | AWG #20-#24 | 2.50 (.098) MAX. | Selective 15µin Gold plated over Nickel | 12,000 PCS |
| CP35TN2CPES | AWG #20-#24 | 2.50 (.098) MAX. | Selective 30µin Gold plated over Nickel | 12,000 PCS |

Ordering Code

1 CP35 **2** 24 **3** S **4** 001 **5** 0

- 1 Series No.
- 2 Connector: 02 to 24
- 3 Contact type: S=Receptacle
- 4 Color: 001= Color Black
- 5 Other options:
0= Standard
*Special option consult manufacturer

1 CP35 **2** TN2 **3** 1 **4** P **5** E **6** S

- 1 Series No.
- 2 Accept wire gage:
TN2 for AWG #20 ~ #24
- 3 Plating code:
1= Tin-lead over Nickel
A= Selective 1.2 µin Gold plated over Nickel
B= Selective 15 µin Gold plated over Nickel
- 4 Material:
P= Phosphor Bronze
- 5 Plating method: E= Pre-tinned
- 6 Style: S = Receptacle terminal

C= Selective 30 µin Gold plated over Nickel