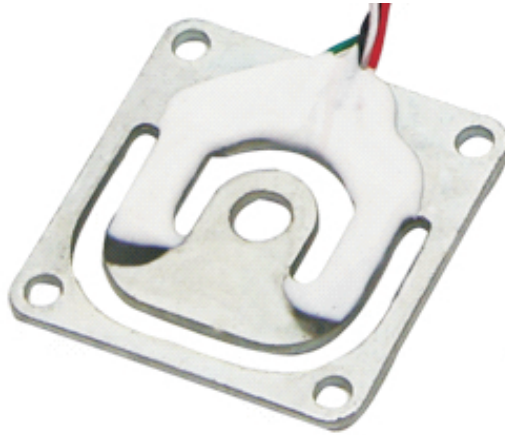


Micro load cell GML670

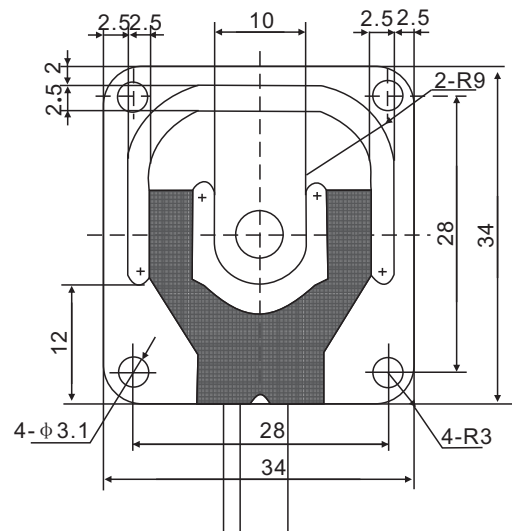
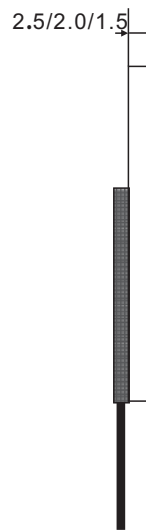
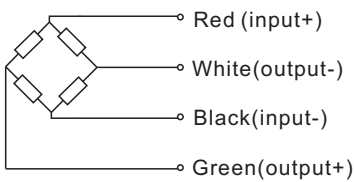


Installation size (mm):

Features

- Material: alloy steel
- Application: hand scale, kitchen scale, microforce test equipment

Wiring Schematic Diagram



Technical Specification

Rated capacity	10,30,50kg	Temp. effect on span	0.1%F.S/10°C
Rated output-FULL BRIDGE	1.5±0.2mV/V (50kg) 1.5±0.2mV/V (30kg) 1.0±0.2mV/V (10kg)	Temp. effect on zero	0.1%F.S/10°C
Rated output-HALF BRIDGE	0.8±0.15mV/V	Input resistance	1000±20Ω
Comprehensive error	0.05%F.S	Output resistance	1000±20Ω
Non-linearity	0.05%F.S	Insulation resistance	≥2000MΩ
Repeatability	0.05%F.S	Excitation voltage	3 ~ 10VDC
Hysteresis error	0.05%F.S	Compensated temp.range	-10 ~ +40°C
Creep	0.05%F.S/3min	Defend grade	IP66
Zero output	±0.3mV/V		