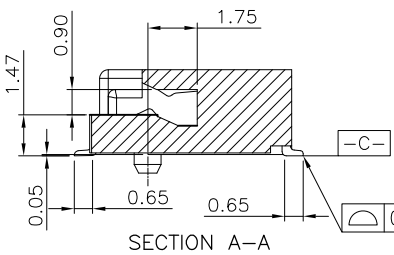
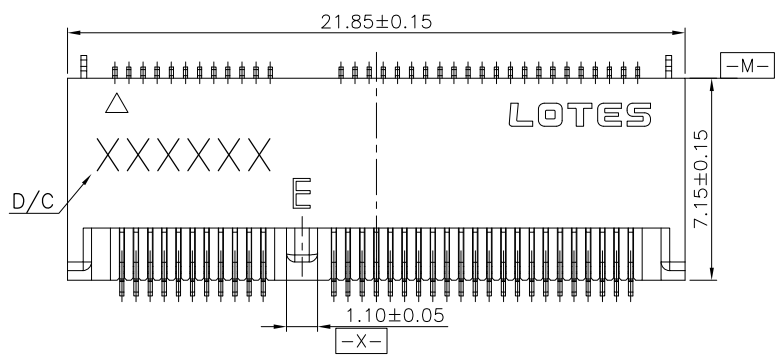
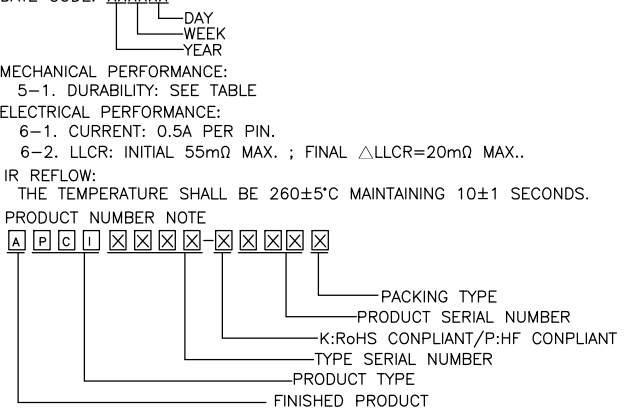


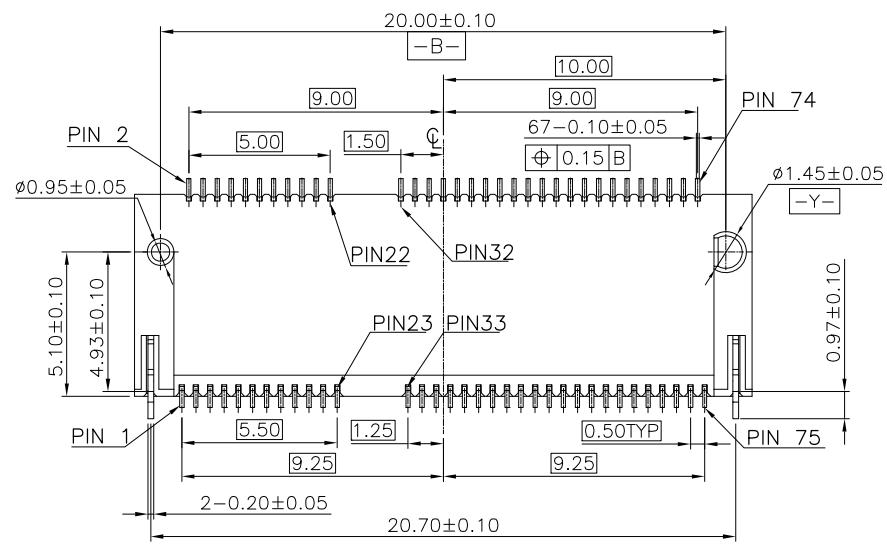
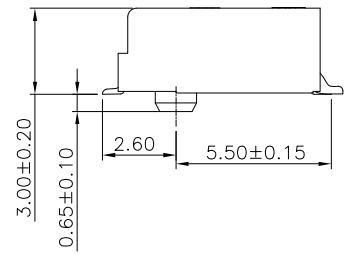
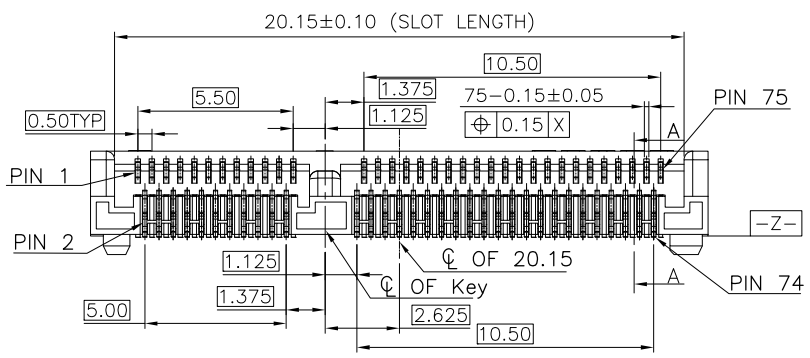
REV.	ECR/N NO./DESCRIPTION	DATE	DRAWN	CHECKED	APPROVE
1	SN14040	05/06'14	Jinjin.Tu	Vito	Barney



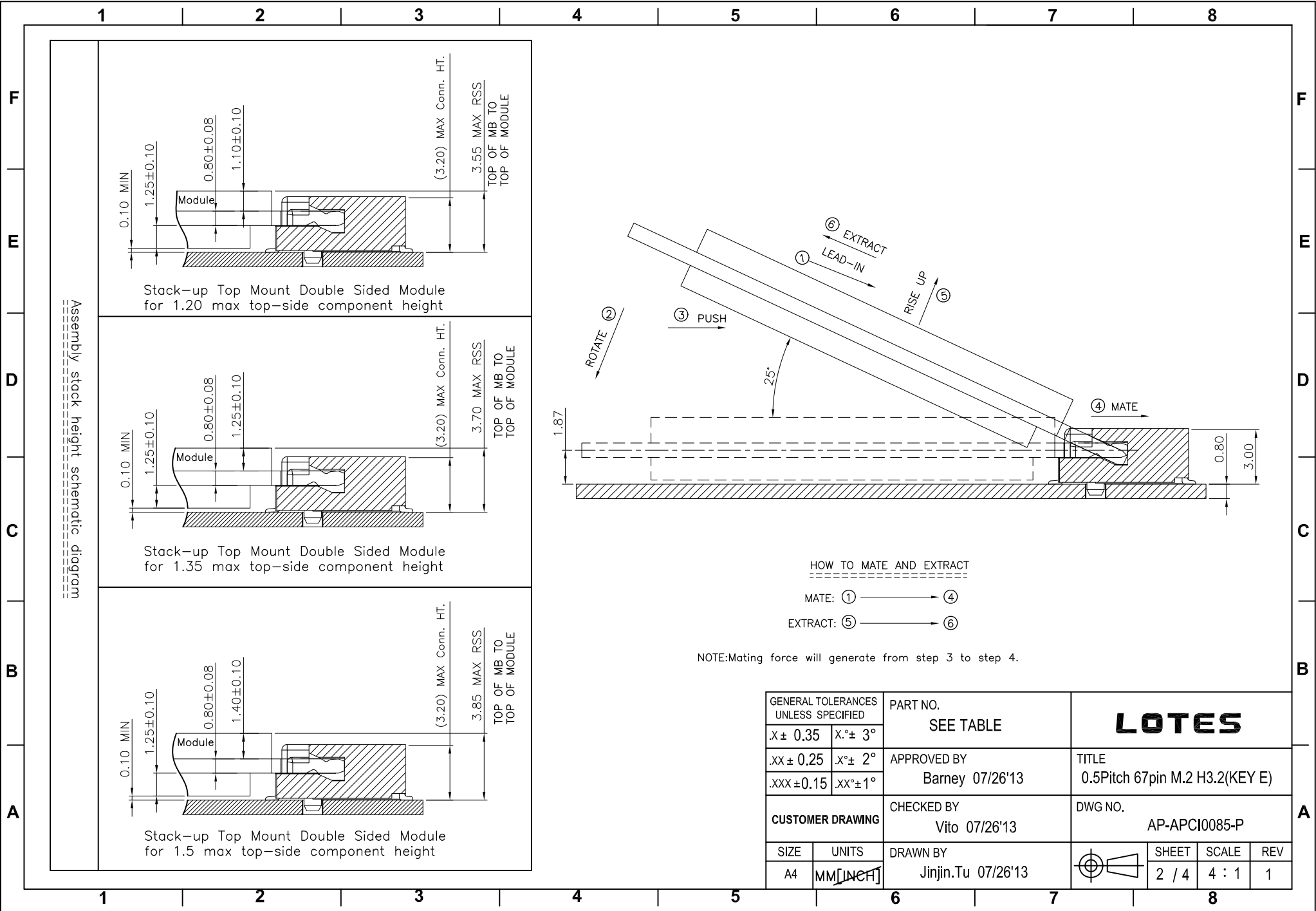
- NOTES:
- MATERIAL SPECIFICATION:
 - 1-1. HOUSING: LCP+40%GF, UL94V-0, COLOR: BLACK.
 - 1-2. CONTACT: COPPER ALLOY.
 - 1-3. SMT TAB: S50C.
 - PLATING SPECIFICATION:
 - 2-1. CONTACT:
 - 50u" MIN. NICKEL UNDER PLATING OVER ALL.
 - G/F PLATING ON SOLDER AREA.
 - GOLD PLATING ON CONTACT AREA: SEE TABLE
 - 2-2. SMT TAB:
 - 50u" MIN. NICKEL UNDER PLATING OVER ALL.
 - 80u" MIN. MATTE TIN PLATING ON SOLDER AREA.
 - HF COMPLIANT, ROHS COMPLIANT.
 - DATE CODE: XXXXXX
 - DAY
 - WEEK
 - YEAR
 - MECHANICAL PERFORMANCE:
 - 5-1. DURABILITY: SEE TABLE
 - ELECTRICAL PERFORMANCE:
 - 6-1. CURRENT: 0.5A PER PIN.
 - 6-2. LLCR: INITIAL 55mΩ MAX. ; FINAL ΔLLCR=20mΩ MAX..
 - IR REFLOW:
 - THE TEMPERATURE SHALL BE 260±5°C MAINTAINING 10±1 SECONDS.
 - PRODUCT NUMBER NOTE



PART NO.	CONTACT PLATING	DURABILITY
APCI085-P001A	30u" MIN. GOLD	60 CYCLES.
APCI085-P002A	1~3u" MIN. GOLD	25 CYCLES.
APCI085-P003A	10u" MIN. GOLD	25 CYCLES.
APCI085-P008A	5u" MIN. GOLD	25 CYCLES.



GENERAL TOLERANCES UNLESS SPECIFIED		PART NO. SEE TABLE	LOTES		
X ± 0.35	X° ± 3°				
.XX ± 0.25	X° ± 2°		APPROVED BY Barney 07/26'13	TITLE 0.5Pitch 67pin M.2 H3.2(KEY E)	
.XXX ± 0.15	.XX° ± 1°	CHECKED BY Vito 07/26'13	DWG NO. AP-APCI0085-P		
CUSTOMER DRAWING		DRAWN BY Jinjin.Tu 07/26'13	SHEET 1 / 4	SCALE 4 : 1	REV 1
SIZE A4	UNITS MM [INCH]				



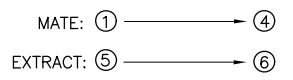
Assembly stack height schematic diagram

Stack-up Top Mount Double Sided Module for 1.20 max top-side component height

Stack-up Top Mount Double Sided Module for 1.35 max top-side component height

Stack-up Top Mount Double Sided Module for 1.5 max top-side component height

HOW TO MATE AND EXTRACT



NOTE: Mating force will generate from step 3 to step 4.

GENERAL TOLERANCES UNLESS SPECIFIED		PART NO. SEE TABLE	LOTES			
X ± 0.35	X° ± 3°					
.XX ± 0.25	X° ± 2°	APPROVED BY Barney 07/26'13	TITLE 0.5Pitch 67pin M.2 H3.2(KEY E)			
.XXX ± 0.15	.XX° ± 1°	CHECKED BY Vito 07/26'13	DWG NO. AP-APCI0085-P			
SIZE A4	UNITS MM [INCH]	DRAWN BY Jinjin.Tu 07/26'13		SHEET 2 / 4	SCALE 4 : 1	REV 1
CUSTOMER DRAWING						

