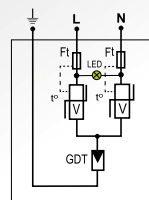
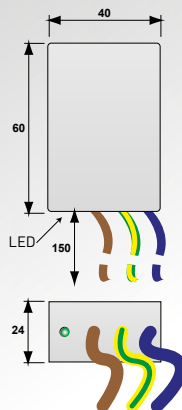
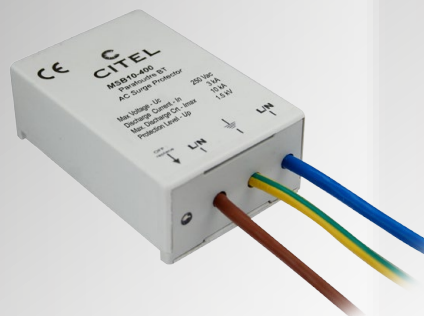


## Hard-wired AC Surge Protectors MSB10 series



V : Varistor  
Ft : Thermal fuse  
t° : Thermal system disconnection  
LED : Disconnection indicator  
GDT : Gas Discharge Tube

- Compact Type 2 and 3 surge protectors
- Wall mounting and hard wired connection
- Status indicators
- EN 61643-11, IEC 61643-11 and UL1449 4ed. compliance

## Characteristics

CITEL Model	MSB10-400	MSB10-120
Description	Compact Type 2 hard wired surge protector	
Network	230 V single phase	120 V single phase
AC system	TT-TN	TT/TN
Protection mode(s)	CM/DM	CM/DM
Max. AC operating voltage	Uc 255 Vac	150 Vac
Max. Load current (if connection serie)	IL -	-
Residual current - Leakage current at Uc	Ic None	None
Temporary Over Voltage (TOV) Characteristics - 5 sec.	UT 335 Vac withstand	180 Vac withstand
Temporary Over Voltage (TOV) Characteristics - 120 mn	UT 440 Vac disconnection	230 Vac disconnection
Nominal discharge current	In 3 kA	3 kA
Max. discharge current -max. withstand @ 8/20 µs by pole	I <sub>max</sub> 10 kA	10 kA
Withstand on Combination waveform - Class III test	Uoc 6 kV	6 kV
Withstand on overvoltages IEEE C62.41.1	10 kV/10 kA	10 kV/10 kA
Protection level CM/DM @ln (8/20µs) and @ 6kV (1.2/50µs)	Up 1.5 kV/1.5 kV	1 kV/1 kV
Admissible short-circuit current	I <sub>sc</sub> 10 000 A	10 000 A
<b>Associated disconnectors</b>		
Thermal disconnector	internal	
Installation ground fault breaker	Type «S» or delayed	
<b>Mechanical characteristics</b>		
Dimensions	see diagram	
Connection to Network	wires	
Voltage/operating indicator	Green led ON	
Failsafe behavior	Disconnection	
Disconnection indicator	Green led OFF	
Mounting	Wall or plate	
Operating temperature	-40/+85°C	
Protection rating	IP65	
Housing material	Thermoplastic UL94-V0	
Standards compliance	IEC 61643-11 / EN 61643-11 / NF EN 61643-11 / UL1449 ed.4	
Certification	UL / GOST / TUV	GOST
<b>Part number</b>	561201	561601

