



Micro-D Metal Shell MWDM Solder Cup Connectors

B



Micro-D Solder Cup Termination—These connectors feature gold-plated TwistPin contacts for best performance. Use with #26 or smaller stranded or solid wire. Specify nickel-plated shells or cadmium plated shells for best availability.

Now Available With #24 Gage Contacts—AWG 24 wire offers increased mechanical strength and lower voltage drop. Glenair Micro-D solder cup connectors are now compatible with 24 gage stranded or solid wire. Specify “N” for 24 gage pin contacts, or “T” for 24 gage socket contacts.

HOW TO ORDER METAL SHELL SOLDER CUP MICRO-D CONNECTORS

Series	Shell Material and Finish	Insulator Material	Contact Layout	Contact Type	Termination Type	Hardware
MWDM	Aluminum Shell	L – LCP 30% Glass-Filled Liquid Crystal Polymer	9	Size #26 Solder Cup Contacts (Standard)	S – Solder Cup	B
			15			P
			21			M
			25	P – Pin		M1
			31	S – Socket		S
			37	Size #24 Solder Cup Contacts		S1
	51	L				
	51-2	K				
	Stainless Steel Shell	3 – Passivated		67	N – Pin	F
				69	T – Socket	R
				100		H
						See Micro-D Mounting Hardware Options Below
	Sample Part Number					
MWDM	2	L –	37	S	S	B

MOUNTING HARDWARE

B	P	M	M1	S	S1	L	K	F	R	H
Thru-Hole	Jackpost	Hex Head Jackscrew	Hex Head Jackscrew, Extended	Slot Head Jackscrew	Slot Head Jackscrew, Extended	Hex Head Jackscrew Non-Removable	Slot Head Jackscrew Non-Removable Extended	Float Mount For Front Panel Mounting	Float Mount For Rear Panel Mounting	Threaded Insert

Micro-D Metal Shell MWDM Solder Cup Connectors

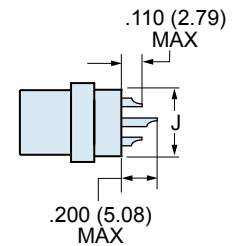
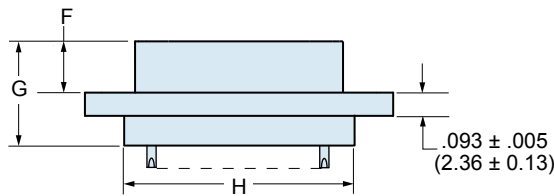
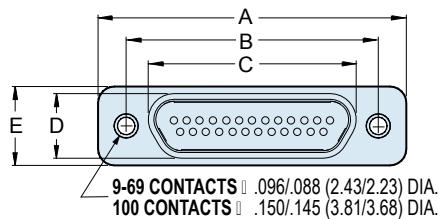


PERFORMANCE SPECIFICATIONS

Current Rating	3 AMP
DWV	600 VAC Sea level
Insulation Resistance	5000 Megohms Minimum
Contact Resistance	8 Milliohms Maximum
Low Level Contact Resist.	32 Milliohms Maximum
Magnetic Permeability	2 μ Maximum
Operating Temperature	-55° C. to +150° C.
Shock, Vibration	50 g., 20g.
Mating Force	(10 Ounces) X (# of Contacts)

MATERIALS AND FINISHES

Connector Shell	Aluminum Alloy 6061 or Stainless Steel, 300 Series, passivated. See Ordering Info for Plating Options
Insulator	Liquid Crystal Polymer (LCP)
Interfacial Seal	Fluorosilicone Rubber, Blue
Pin Contact	Beryllium Copper Gold over Nickel Plating
Socket Contact	Copper Alloy Gold Over Nickel Plating
Hardware	300 Series Stainless Steel
Encapsulant	Epoxy Resin Hysol EE4215



DIMENSIONS

Layout	A Max.		B		C Max.		D Max.		E Max.		F		G Max.		H Max.		J Max.	
	In.	mm.	In. ±.003	mm. ±0.08	In.	mm.	In.	mm.	In.	mm.	In. ±.003	mm. ±0.08	In.	mm.	In.	mm.	In.	mm.
9P	.785	19.94	.565	14.35	.333	8.46	.184	4.67	.308	7.82	.183	4.65	.416	10.57	.400	10.16	.270	6.86
9S	.785	19.94	.565	14.35	.400	10.16	.250	6.35	.308	7.82	.195	4.95	.429	10.90	.400	10.16	.270	6.86
15P	.935	23.75	.715	18.16	.483	12.27	.184	4.67	.308	7.82	.183	4.65	.416	10.57	.550	13.97	.270	6.86
15S	.935	23.75	.715	18.16	.551	14.00	.250	6.35	.308	7.82	.195	4.95	.429	10.90	.550	13.97	.270	6.86
21P	1.085	27.56	.865	21.97	.633	16.08	.184	4.67	.308	7.82	.183	4.65	.416	10.57	.700	17.78	.270	6.86
21S	1.085	27.56	.865	21.97	.701	17.81	.250	6.35	.308	7.82	.195	4.95	.429	10.90	.700	17.78	.270	6.86
25P	1.185	30.01	.965	24.51	.733	18.62	.184	4.67	.308	7.82	.183	4.65	.416	10.57	.800	20.32	.270	6.86
25S	1.185	30.01	.965	24.51	.801	20.35	.250	6.35	.308	7.82	.195	4.95	.429	10.90	.800	20.32	.270	6.86
31P	1.335	33.91	1.115	28.32	.883	22.43	.184	4.67	.308	7.82	.183	4.65	.416	10.57	.950	24.13	.270	6.86
31S	1.335	33.91	1.115	28.32	.951	24.16	.250	6.35	.308	7.82	.195	4.95	.429	10.90	.950	24.13	.270	6.86
37P	1.485	37.72	1.265	32.13	1.033	26.24	.184	4.67	.308	7.82	.183	4.65	.416	10.57	1.100	27.94	.270	6.86
37S	1.485	37.72	1.265	32.13	1.101	27.96	.250	6.35	.308	7.82	.195	4.95	.429	10.90	1.100	27.94	.270	6.86
51P	1.435	36.45	1.215	30.86	.983	24.97	.228	5.79	.351	8.92	.183	4.65	.416	10.57	1.050	26.67	.310	7.87
51S	1.435	36.45	1.215	30.86	1.051	26.70	.296	7.52	.351	8.92	.195	4.95	.429	10.90	1.050	26.67	.310	7.87
51-2P	1.835	46.61	1.615	41.02	1.384	35.15	.184	4.67	.310	7.87	.183	4.65	.416	10.57	1.450	36.83	.270	6.86
51-2S	1.835	46.61	1.615	41.02	1.450	36.83	.250	6.35	.310	7.87	.195	4.95	.429	10.90	1.450	36.83	.270	6.86
67P	2.235	56.77	2.015	51.18	1.784	45.31	.184	4.67	.310	7.87	.183	4.65	.416	10.57	1.850	36.83	.270	6.86
67S	2.235	56.77	2.015	51.18	1.850	46.99	.250	6.35	.310	7.87	.195	4.95	.429	10.90	1.850	36.83	.270	6.86
69P	1.735	44.07	1.515	38.48	1.284	32.61	.228	5.79	.351	8.92	.183	4.65	.416	10.57	1.350	34.29	.310	7.87
69S	1.735	44.07	1.515	38.48	1.350	34.29	.296	7.52	.351	8.92	.195	4.95	.429	10.90	1.350	34.29	.310	7.87
100P	2.170	55.12	1.800	45.72	1.383	35.13	.270	6.86	.394	10.01	.183	4.65	.416	10.57	1.442	36.63	.360	9.14
100S	2.170	55.12	1.800	45.72	1.451	36.86	.333	8.46	.394	10.01	.195	4.95	.429	10.90	1.442	36.63	.360	9.14

Mouser Electronics

Authorized Distributor

Click to View Pricing, Inventory, Delivery & Lifecycle Information:

Glenair:

[MWDM1L-25NSM1](#) [MWDM1L-37TSM1](#) [MWDM1L-100PSB](#) [MWDM1L-100SSB](#) [MWDM1L-15PSS1](#) [MWDM1L-25PSF](#) [MWDM1L-25SSF](#) [MWDM1L-51NSF](#) [MWDM1L-51TSB](#) [MWDM1L-9PSF](#) [MWDM2L-25NSB](#) [MWDM2L-25PSB](#) [MWDM2L-31PSS](#) [MWDM2L-31TSB](#) [MWDM2L-37PSP](#) [MWDM2L-37SSP](#) [MWDM2L-51SSB](#) [MWDM2L-9SSS](#) [MWDM2L-15SSL](#) [MWDM2L-37SSB](#) [MWDM1L-37PSB](#) [MWDM2L-9NSS](#) [MWDM2L-31PSS1](#) [MWDM2L-51PSS1](#) [MWDM1L-21NSM](#) [MWDM1L-21PSB](#) [MWDM1L-21PSF](#) [MWDM1L-21PSK](#) [MWDM1L-21PSL](#) [MWDM1L-21PSM](#) [MWDM1L-21PSM1](#) [MWDM1L-21PSP](#) [MWDM1L-21PSS](#) [MWDM1L-21PSS1](#) [MWDM1L-21SSB](#) [MWDM1L-21SSF](#) [MWDM1L-21SSK](#) [MWDM1L-21SSL](#) [MWDM1L-21SSP](#) [MWDM1L-21SSR](#) [MWDM1L-21SSS](#) [MWDM1L-21TSB](#) [MWDM1L-21TSM](#) [MWDM1L-25NSB](#) [MWDM1L-25NSL](#) [MWDM1L-25PSB](#) [MWDM1L-25PSK](#) [MWDM1L-25PSL](#) [MWDM1L-25PSM](#) [MWDM1L-25PSM1](#) [MWDM1L-25PSP](#) [MWDM1L-25PSS](#) [MWDM1L-25PSS1](#) [MWDM1L-25SSB](#) [MWDM1L-25SSK](#) [MWDM1L-25SSL](#) [MWDM1L-25SSM1](#) [MWDM1L-25SSP](#) [MWDM1L-25SSS](#) [MWDM1L-25SSS1](#) [MWDM1L-25TSB](#) [MWDM1L-25TSS](#) [MWDM1L-31NSB](#) [MWDM1L-31NSM](#) [MWDM1L-31PSB](#) [MWDM1L-31PSF](#) [MWDM1L-31PSK](#) [MWDM1L-31PSL](#) [MWDM1L-31PSM](#) [MWDM1L-31PSM1](#) [MWDM1L-31PSP](#) [MWDM1L-31PSR](#) [MWDM1L-31PSS](#) [MWDM1L-31PSS1](#) [MWDM1L-31SSB](#) [MWDM1L-31SSK](#) [MWDM1L-31SSL](#) [MWDM1L-31SSM](#) [MWDM1L-31SSM1](#) [MWDM1L-31SSP](#) [MWDM1L-31SSS](#) [MWDM1L-31SSS1](#) [MWDM1L-31TSB](#) [MWDM1L-31TSP](#) [MWDM1L-37NSB](#) [MWDM1L-37PSF](#) [MWDM1L-37PSK](#) [MWDM1L-37PSL](#) [MWDM1L-37PSM](#) [MWDM1L-37PSM1](#) [MWDM1L-37PSP](#) [MWDM1L-37PSS](#) [MWDM1L-37PSS1](#) [MWDM1L-37SSB](#) [MWDM1L-37SSF](#) [MWDM1L-37SSK](#) [MWDM1L-37SSL](#) [MWDM1L-37SSM](#) [MWDM1L-37SSM1](#) [MWDM1L-37SSP](#)