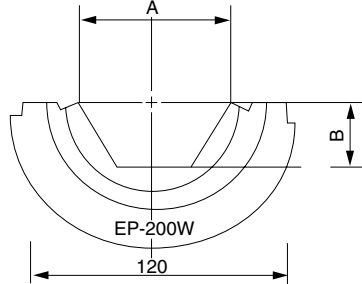
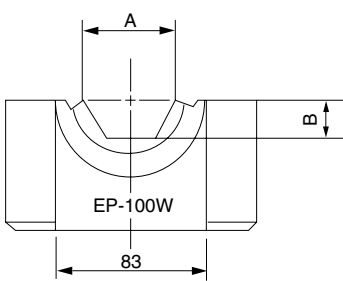


### EP-100W/EP-200W DIES



#### FOR STEEL SLEEVES

C : Die Width

DIE NO.	A	B	C (100/200)
S8.5	8.5	3.7	50 -
S10	10	4.3	45 -
S12	12	5.2	40 -
S16	16	6.9	40 -
S18	18	7.8	35 -
S20	20	8.7	35 -
S22	22	9.5	35/70
S23	23	10.0	30 -
S24	24	10.4	30/60
S26	26	11.3	30/60
S28	28	12.1	28/60
S30	30	12.99	25 -
S32	32	13.9	25 -
S44	44	19.1	- 35
S50	50	21.7	- 30

#### FOR COPPER LUGS

DIE NO.	A	B	C (100/200)
C14	14	6.1	60 -
C17	17	7.4	60 -
C19	19	8.2	60 -
C23	23	10.0	60 -
C26	26	11.3	60 -
C29	29	12.6	60 -
C32	32	13.9	60 -
C36	36	15.6	55 -
C38	38	16.5	55 -
C42	42	18.2	55 -
C47	47	20.4	50 -
C50	50	21.7	50 -
C51	51	22.0	50 -
C54	54	23.4	50 -
C56	56	24.3	40 -
C57	57	24.7	40 -
C63	63	27.3	- 70
C64	64	27.7	35 -
C68	68	29.4	- 70
C73	73	31.6	- 65
C78	78	33.8	- 64
C85	85	36.8	- 60
C86	86	37.23	- 60

#### FOR ALUMINUM SLEEVES

DIE NO.	A	B	C (100/200)
A22	22	9.5	75/128
A26	26	11.3	75/128
A30	30	12.5	75/128
A34	34	14.2	75/128
A38	38	16.0	75/128
A42	42	18.2	75/128
A44	44	18.6	75/128
A48	48	20.8	75/128
A52	52	22.5	75/128
A60	60	26.0	75/128
A65	65	28.2	75/128
A68	68	29.4	75/128
A71	71	30.7	75/128
A76	76	32.9	- 128
A90	90	39.0	- 128
A100	100	43.3	- 128

