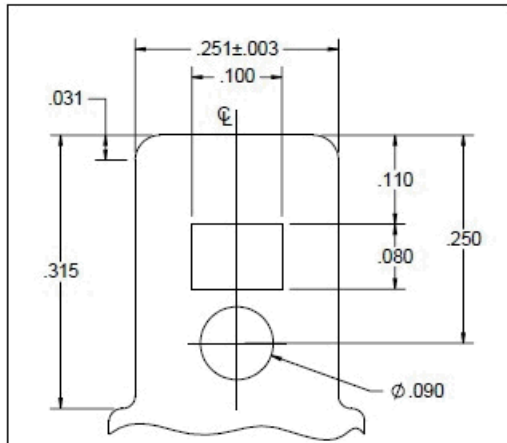
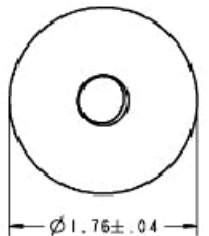


BOTTOM STUD
M8x1.25P-6G THREAD
FULL THREAD



BLADE DETAILS

SCALE 8.000



SCALE 1.500

SPECIFICATIONS :

" GEM-III CAPACITORS ARE MANUFACTURED WITH HIGH GRADE METALLIZED POLYPROPYLENE FILM"

MAIN CAPACITANCE	: 30.00µF ± 1.5%
SECONDARY CAPACITANCE	: NIL
VOLTS	: 370AC
LEAKAGE CURRENT	: 30µA MAX
FREQUENCY	: 50/60 HZ
OPERATING TEMPERATURE	: -40°C TO 90°C
STORAGE TEMPERATURE	: -40°C TO 90°C
OPERATIVE LIFE	: 60,000 HRS WITH 94% SURVIVAL
DISSIPATION FACTOR	: 0.1 % MAX.
CASE MATERIAL	: ALUMINUM
COVER MATERIAL	: STEEL TIN PLATED
TERMINALS	: 0.250" x0.031" QUICK CONNECT BLADES
DIELECTRIC FLUID	: DIELEKTROL VI
INTERNAL PROTECTION	: UL RECOGNIZED PRESSURE SENSITIVE INTERRUPTER

DRAWING REVISION A	REVISION BY APPROVED BY	DATE
ECO ECO-0122585		
ECO DESCRIPTION INITIAL RELEASE TO IDS		
<small>COPYRIGHT REGAL BELOIT AMERICA, INC. ALL RIGHTS RESERVED. PROPRIETARY AND CONFIDENTIAL INFORMATION - THIS DOCUMENT IS THE PROPERTY OF REGAL BELOIT AMERICA, INC. (OWNER) AND CONTAINS OWNER'S PROPRIETARY INFORMATION. ANY PERSON, CORPORATION OR OTHER FIRM RECEIVING IT IS DEEMED BY RECEIVING IT, TO AGREE THAT IT, AND/OR ANY PART OF IT, SHALL NOT BE DISCLOSED TO ANY PERSON, CORPORATION OR OTHER ENTITY, DUPLICATED, AND/OR USED, EXCEPT AS EXPRESSLY APPROVED IN WRITING IN ADVANCE BY OWNER. THIS DOCUMENT SHALL BE RETURNED TO OWNER UPON REQUEST. IT MAY BE SUBJECT TO CERTAIN RESTRICTIONS UNDER APPLICABLE EXPORT CONTROL LAWS AND REGULATIONS.</small>		

UNLESS OTHERWISE SPECIFIED
DIMENSIONS ARE IN INCHES

TOLERANCE ON:
 1 PL DECIMALS +/- 0.1
 2 PL DECIMALS +/- 0.01
 3 PL DECIMALS +/- 0.001
 ANGLES +/- 0.5
 FRACTIONS +/- 0.5
 FINISH ✓

DRAWN BY KEP	DATE 4/28/2017
APPROVED BY ALEJANDRA. R	DATE 4/28/2017
REFERENCE	
THIRD ANGLE PROJECTION	

Regal Beloit America, Inc.	
DESCRIPTION CAPACITOR	
GEM III CAPACITOR OUTLINE DRAWING	
MATERIAL	PROCESS/FINISH
SIZE B	DRAWING NUMBER 27L459
SHEET 1 OF 1	