

Specifications:

Current Rating: 1.5A AC/DC
 Voltage Rating: 125V AC/DC
 Contact Resistance: 20m ohm Max.
 Insulation Resistance: 500 ohm Min.
 Withstanding Voltage: 1,000/minute
 Temperature range: -40°C to +85°C

MATERIAL:

Insulator: Standard material: glass filled P.B.T
 UL94V-0, Standard color: Black

Contact: 0.45mm phosphor bronze

FINISH:

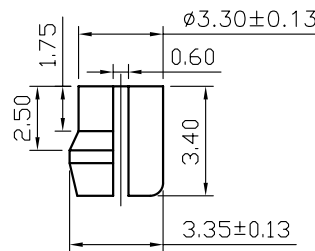
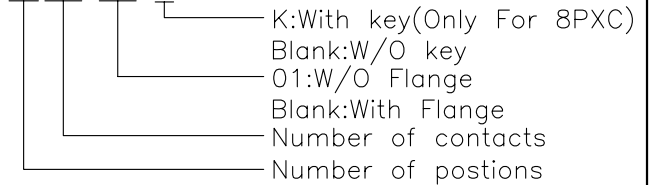
Contact: Gold Plating

MECHANICAL:

Durability: 1,000 mating cycles

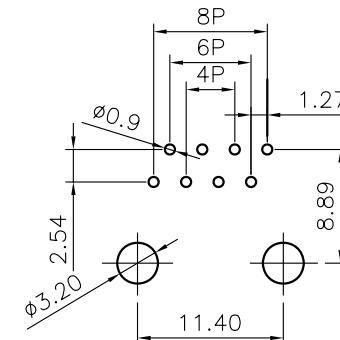
How To Order

7006-XPXC-XX-X



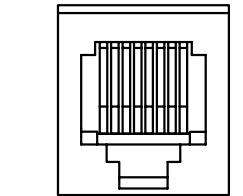
DETAIL X

No. Of Position	No. Of Contacts	Dimension		
		A	B	C
4	4	13.8	11.43	7.62
6	4/6	15.9	13.46	10.16
8	6/8	17.9	15.5	11.43

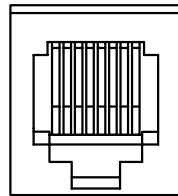


PC Board Layout

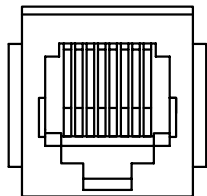
RoHS Compliant



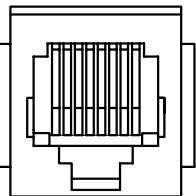
W/O Flange&Key



W/O Flange&With Key



With Flange&Key



With Flange&W/O Key

DRAWN:
 CEL KING
 CHECKED:
 Jeremy Liu
 APPROVAL:
 Mike Wu

GENERAL TOLERANCE:
 .X = ±0.2
 .XX = ±0.15

UNIT: MM
 SCALE:
 SHEET: 1 / 1
 PROJECTION:



繼德工業股份有限公司
 Neltron Industrial Co., Ltd.

DESCRIPTION:
 180° (SPLIT PEGS) TOP ENTRY PCB JACK

PART NO:
 7006-XPXC-XX-X

SIZE

A4

REV	DATE	FILE	BY
E			
D	29-Apr-2008	ECN-CN080436	P.D.J
C	14-Jun-2007	(P0330)	P.D.J