

1

2

3

4

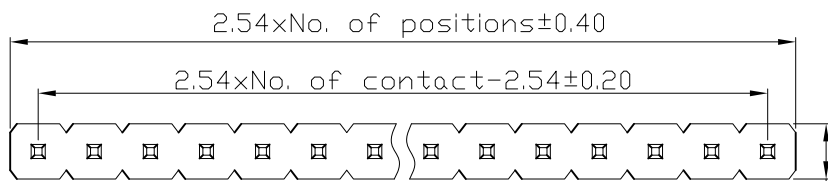
5

6

7

A

A



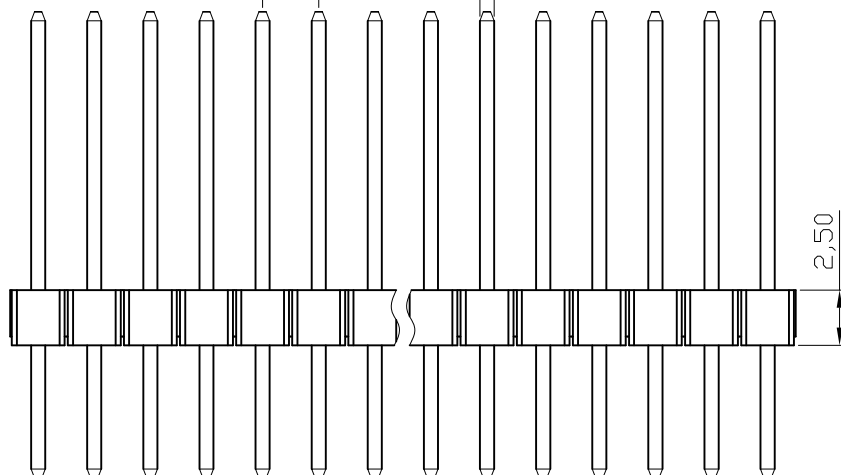
B

B



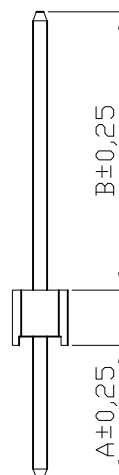
C

C



D

D



E

E

NOTES:**MATERIAL**

1. Insulator Material: PBT+30%GF(UL94V-0), Black
2. Contact Material : Brass
3. Contact Plating : Au or Tin over 50u"Ni

ELECTRICAL

1. Current Rating : 3.0Amps/contact max
2. Withstand Voltage : 1000V AC/minute
3. Contact Resistance : 20mΩ/contact max
4. Insulation Resistance: 1000MΩ min at Voltage=100V

ENVIRONMENTAL

1. Operation Temperature: -40°C to +105°C
2. Mechanical life cycle: min.200

Packing: PE bag

③ Order code: AW140-EG-XXX Y

Contact plating

G: 1u" Au

Z: Tin

No. of contacts

Y	Dimension	
	A	B
D	3.0	5.7
A	3.8	6.1
B	3.0	6.1
C1	2.3	8.8
C2	5	6.1
E	6	12.6
F	3	3.7

F

F



P.C.B. LAYOUT

G

G

RoHS compliant

Unit: mm

Scale	Free					Date	Name	Customer-No.
TOLERANCE						Drawn	03.02.2009	Dean
X.X	±0.30					Approved	03.09.2013	Amy
X.XX	±0.20							
X.XXX	±0.10	③	Add new P/N for Tin version	03.09.2013	Amy			ASSMANN WSW-No. AW140-EG-GXXY ③ AW140-EG-ZXXY
DIM	TOL	②	Change of plant	27.09.2012	Amy			Drawing-No.
		①	Drawn	03.02.2009	Dean			ASS 3350 CO
Angle	±5°	Id.	Modification	Date	Name			rev03

Replace

Sheet

H

H

1

2

3

4

5

6

7