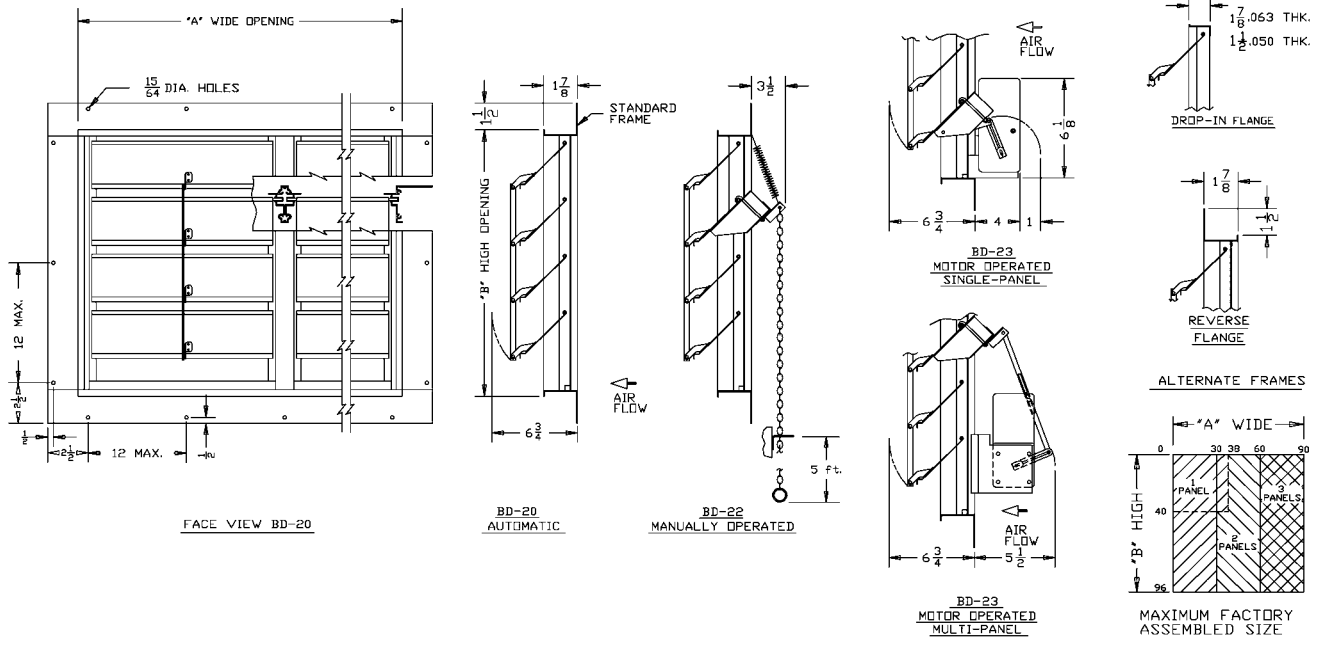


BACKDRAFT DAMPER, SINGLE THICKNESS BLADES, ALUMINUM / STEEL CONSTRUCTION



AWV ITEM No.	QUANTITY	MODEL No.	"A" WIDE	"B" HIGH	OPTIONS	COMMENTS
					REVERSE FLANGE FRAME DROP-IN FRAME MOTOR VOLTAGE	

STANDARD SPECIFICATIONS

FRAME: STANDARD AND REVERSE FLANGE: .063" 6063-T6 EXTRUDED ALUMINUM ALLOY.
 DROP-IN: .050" 6063-T6 EXTRUDED ALUMINUM ALLOY THRU 16 SQ. FT. & .063" 6063-T6 EXTRUDED ALUMINUM ALLOY ABOVE 16 SQ. FT.

BLADES: 24 GAUGE ALUMINUM WITH A SINGLE STIFFENING BRAKE THRU 30' WIDE PANELS.
 22 GAUGE ALUMINUM WITH DOUBLE STIFFENING BRAKES ABOVE 30' WIDE PANELS.

AXLES: 3/16" DIAMETER FULL LENGTH PLATED STEEL ROD.

BEARINGS: SELF-LUBRICATING HEAVY DUTY NYLON.

LINKAGE: PLATED STEEL BRACKETS, STAINLESS STEEL SHOULDER RIVETS AND ALUMINUM LINKAGE BARS. PANELS UP TO BUT NOT INCLUDING 20"W x 20"H HAVE SINGLE LINKAGE. ALL OTHERS HAVE DOUBLE LINKAGE.

SEALS: POLYURETHANE SPONGE ON THE SILL AND FELT ON ADJACENT BLADES.

FINISH: MILL.

ACTUATOR OPTIONS: MANUAL: SPRING CLOSING CHAIN ACTUATOR.
 ELECTRIC: SPRING RETURN ACTUATOR AVAILABLE IN 24, 110/220, 440 OR 550 VOLT, SINGLE PHASE 60 HZ. WHEN DAMPER EXCEEDS TWO PANELS WIDE, MULTIPLE ACTUATORS WILL BE SUPPLIED. ACTUATORS MAY BE LINE VOLTAGE OR FURNISHED WITH A TRANSFORMER.

NOTES

- DESIGN CRITERIA:
 MAXIMUM VELOCITY: 2500 fpm/13 m/s.
 MAXIMUM DIFFERENTIAL PRESSURE: 1" w.g./250 Pa.
 MAX. TEMP: 200°F/95°C WITHOUT ELECTRIC ACTUATOR.
 130°F/55°C WITH FACTORY SUPPLIED STD. ELECTRIC ACTUATOR.
- MAXIMUM PANEL SIZES - SEE SIZING CHART.
 MINIMUM PANEL SIZE - 6"W x 6"H.
- "A" AND "B" DIMENSIONS ARE EXACT FRAME DIMENSIONS. WHEN DAMPERS ARE SUPPLIED WITH ALTERNATE FRAMES, THEY WILL BE FABRICATED WITH THE OUTSIDE FRAME DIMENSIONS APPROXIMATELY 1/8" UNDERSIZE.
- ANY VARIATIONS TO THE ABOVE STANDARD SPECIFICATIONS MUST BE FACTORY APPROVED IN ADVANCE.
- DRAWINGS ARE SUBJECT TO CHANGE WITHOUT NOTICE. SPECIFIC INFORMATION FOR ANY COMPONENT OR CONSTRUCTION DETAIL WILL BE FURNISHED UPON REQUEST.
- DAMPERS ARE FOR VERTICAL MOUNT, HORIZONTAL AIR FLOW ONLY.
- USE OF OTHER THAN STANDARD ELECTRIC ACTUATOR MAY EFFECT MAXIMUM TEMPERATURE.
- DAMPER SHOULD BE MOUNTED A MINIMUM OF 1/3 FAN DIAMETER FROM FAN HOUSING.

REV.	DESCRIPTION	DATE	BY

DATE :
 AWV PROD. No. :
 CUSTOMER:
 CUSTOMER ORDER No. :
 AGENT:
 AGENT ORDER No. :

awv american warming and ventilating
 A MESTEK COMPANY
 7301 INTERNATIONAL DRIVE HOLLAND, OHIO

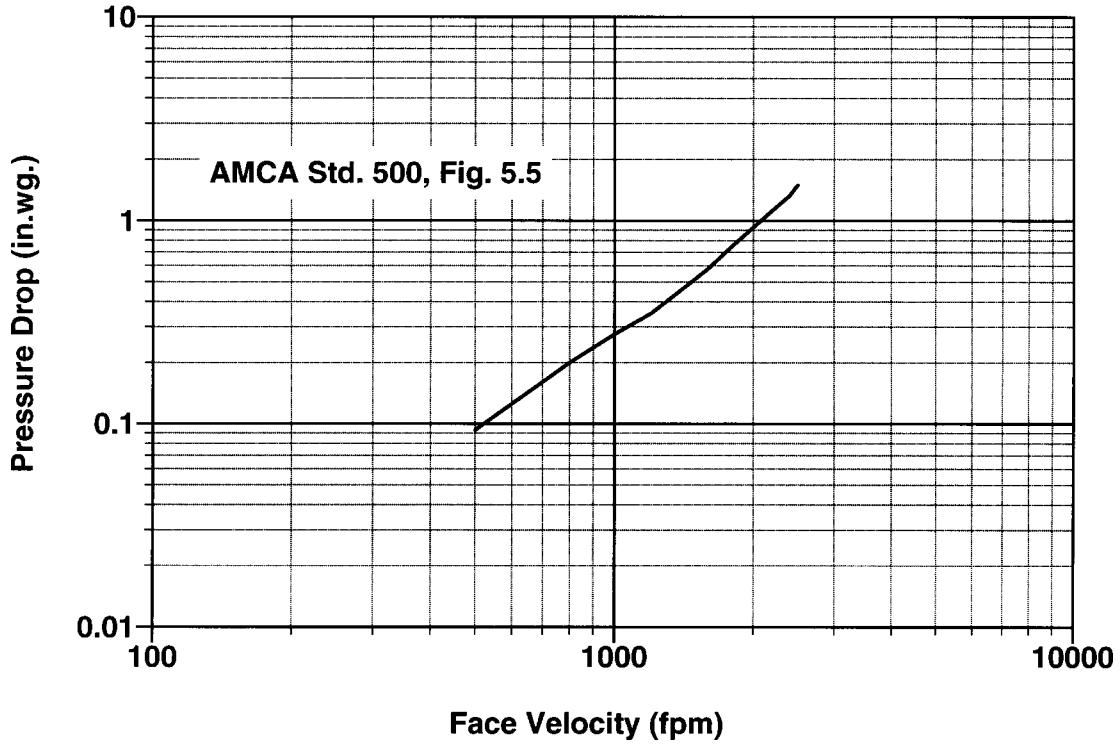
BD-20, 22, 23 BACKDRAFT DAMPER

DRN. BY	SJA	DWG. NO.	BD-20-1	REV.
DATE	3-27-01			

PERFORMANCE DATA FOR MODEL BD-20

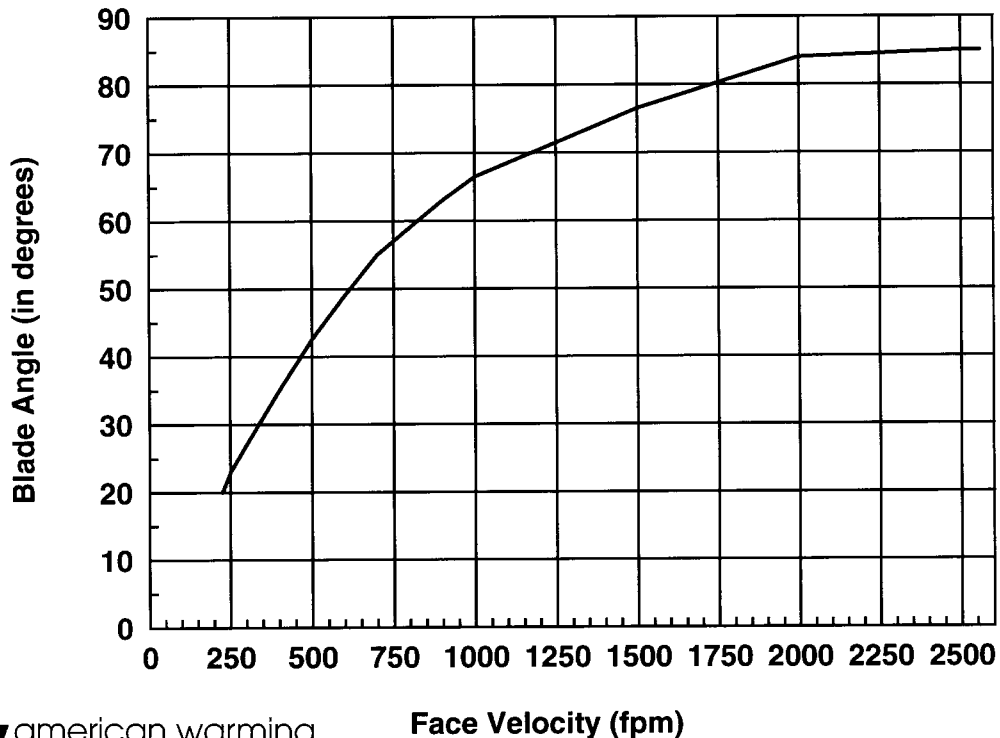
PRESSURE DROP CURVE

(SIZE TESTED 24" X 24")



BLADE ANGLE CURVE

(SIZE TESTED 24" X 24")



awv american warming
and ventilating

A Mestek Company

7301 International Drive • Holland, OH 43528 • Phone: (419) 865-5000 • Fax: (419) 865-1375 • www.awv.com

Face Velocity (fpm)