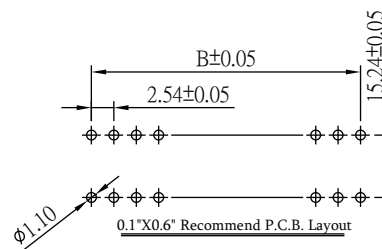
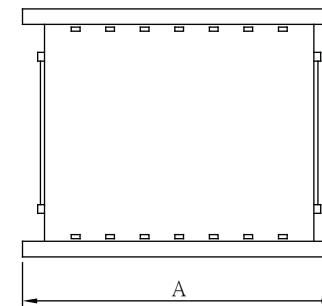
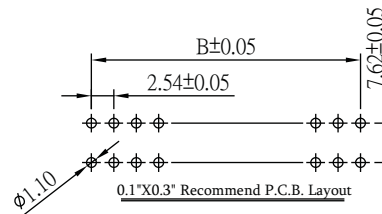
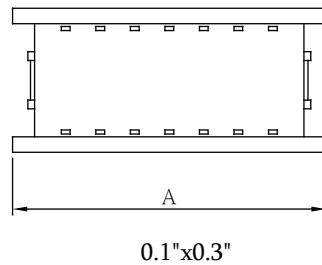
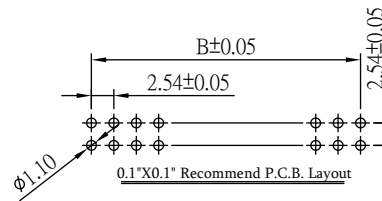
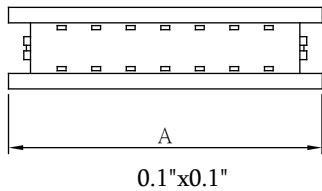
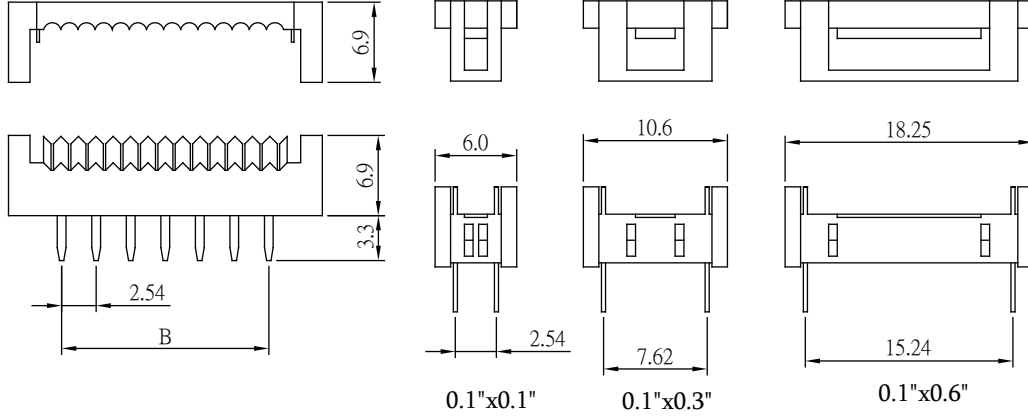
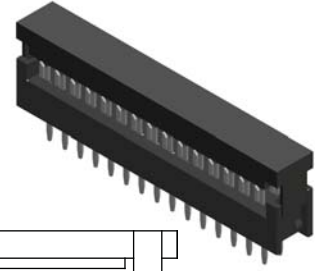


Dip Plug 2.54mm

Specifications
 Current Rate: 1 AMP
 Insulation Resistance: 1000MΩ Min
 Contact Resistance: 30mΩ Max
 Dielectric Voltage: 500V AC for one minute
 Operation Temperature: -40°C to +105°C

Material
 Insulator: Polyester, UL 94V-0
 Standard: PBT
 Terminal: Copper Alloy
 Plating: Tin Plated



◎ Mate flat cable 1.27 mm

No. of Contacts	Dim. A	Dim. B	
10	17.76	10.16	0.1"= 2.54
14	22.84	15.24	
16	25.38	17.78	
20	30.46	22.86	
26	38.08	30.48	
30	43.16	35.56	
34	48.24	40.64	
40	55.86	48.26	
50	68.56	60.96	
60	81.26	73.66	
No. of Contacts	Dim. A	Dim. B	
8	15.44	7.62	0.3"= 7.62
10	17.98	10.16	
14	23.06	15.24	
16	25.60	17.78	
18	28.14	20.32	
20	30.68	22.86	
24	35.76	27.94	
28	40.84	33.02	
No. of Contacts	Dim. A	Dim. B	
24	35.76	27.94	0.6"= 15.24
28	40.84	33.02	
32	45.92	38.10	
36	51.00	43.18	
40	56.08	48.26	

ORDER INFORMATION

