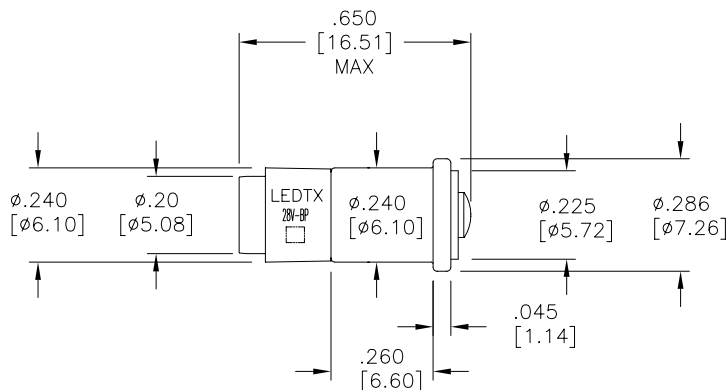
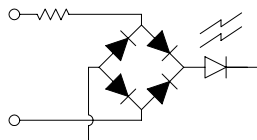


LTR	REVISION	DATE	APPD
-	RELEASED	03-27-09	



**NOTES:**

1. SLEEVE MATERIAL: RYNITE FR530
2. BASE MATERIAL: SHELL, NICKEL PLATED BRASS
3. RIVET CAP MATERIAL: BRASS, GRADE B, .0005 THK.  
FINISH: NICKEL PLATE PER MIL SPEC MIL-C-26074
4. PARTS WITH (\*) ARE RoHS CERTIFIED.

FF200-0AG-028B*	AQUA GREEN	28	15	518	*
FF200-0BG-028B	BLUE GREEN	28	15	505	
FF200-0CW-028B*	COOL WHITE	28	15	8000K	*
FF200-0ER-028B	SUPER RED	28	20	637	
FF200-0IW-028B*	WARM WHITE	28	15	3000K	*
FF200-0PB-028B*	SUPER BLUE	28	15	462	*
FF200-0UG-028B*	SUPER GREEN	28	15	573	*
FF200-0UO-028B*	SUPER ORANGE	28	20	612	*
FF200-0UR-028B*	ULTRA RED	28	20	652	*
FF200-0UY-028B*	SUPER YELLOW	28	20	599	*
FF200-1AG-028B	AQUA GREEN	28	15	521	
FF200-1CW-028B	COOL WHITE	28	15	8000K	
FF200-1PB-028B	ULTRA BLUE	28	15	430	
FF200-2IW-028B*	INCAND. WHITE	28	15	4500K	*



REVISION NOTIFICATION	
<input type="checkbox"/>	PMA
<input type="checkbox"/>	UL
<input type="checkbox"/>	CUSTOMER _____
<input type="checkbox"/>	OTHER

LEDTRONICS PART NO.	COLOR EMITTED	VOLTS	mA typ.	λP nm
ELECTRICAL TEST				



**-PROPRIETARY-**  
This document contains Proprietary information of LEDTRONICS, INC. It may not be copied, used or disclosed for any purpose without the prior express written consent of LEDTRONICS, INC.

.XXX ± .010 TOLERANCE PER ANSI-Y14.5  
.XX ± .025 (UNLESS OTHERWISE STATED)  
ANGLES ± 0°,30'  
FRACT. ± 1/32

TITLE					
<b>FF200-XXX-028B</b>					
DWG NO	SCALE	SHEET	DATE		
FF200-28V-BP-2	2:1	1 OF 1	03-27-09		
CODE IDENT NO.	DWG BY	CHK BY	QA	MNFG	CUSTOMER
8Z410	GP	PL	03-27-09		