

## TYPES KA-U, KKA-U

A-24

### UNIVERSAL TERMINAL

(One Conductor) For Aluminum and Copper Conductors

These dual-rated one-conductor lugs are constructed from high strength aluminum alloy and electro tin-plated to provide low contact resistance.



AL9CU

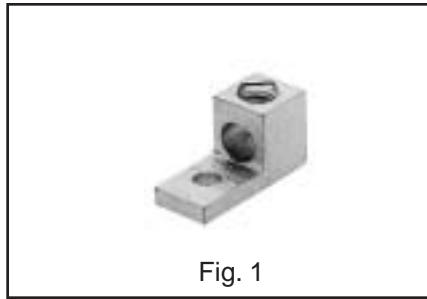


Fig. 1

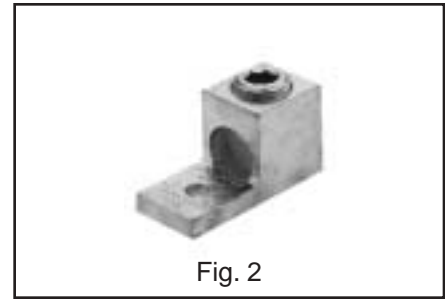


Fig. 2

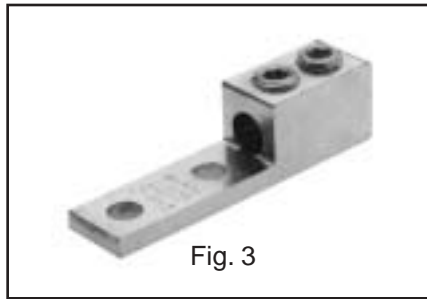


Fig. 3

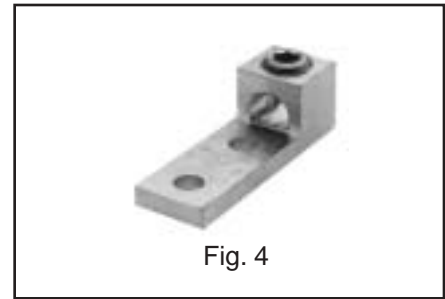
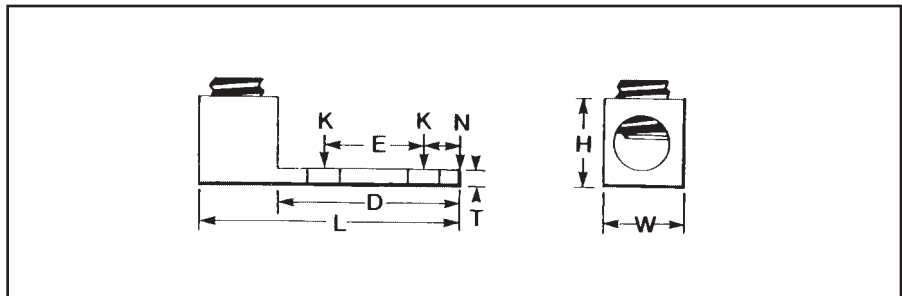


Fig. 4



CATALOG NUMBER*	FIG. NO.	WIRE RANGE ALUMINUM OR COPPER	STUD HOLE SIZE	DIMENSIONS							RECOMMENDED TIGHTENING ▲ TORQUE in-lb
				D	L	N	** W	E	T	** H	
KA6U	1	14 STR. - 6 STR.	1/4	.63	1.06	.25	.50	—	.09	.50	45
KA2U	1	14 STR. - 2 STR.		.63	1.16	.31	.50	—	.10	.55	50
KA25U	1	14 STR. - 1/0 STR.		.81	1.50	.44	.63	—	.19	.80	50
KA26U	2	6 STR. - 2/0 STR.		.81	1.47	.47	.63	—	.19	.80	120
KA29U	2	6 STR. - 250	5/16	.94	2.00	.50	1.00	—	.25	1.13	275
KA30U	2	6 STR. - 300		.94	2.00	.50	1.00	—	.25	1.12	275
KA31U	2	6 STR. - 350	3/8	1.03	2.25	.88	1.13	—	.25	1.25	375
KA34U	2	4 STR. - 500		1.50	2.81	.88	1.51	—	.31	1.58	500
KA36U	2	2 STR. - 600		1.72	3.19	.78	1.50	—	.44	1.56	500
KA40U	2	300 - 800	1/2	1.69	3.38	.88	1.75	—	.50	1.94	500
KA44U	2	500 - 1000		1.69	3.38	.88	1.75	—	.50	1.94	600
KKA31U-2N	3	6 STR. - 350	1/2	3.16	5.50	.63	1.25	1.75	.38	1.50	375
KA36U-2N	4	2 STR. - 600		3.22	4.69	.63	1.50	1.75	.44	1.57	500
KA40U-2N	4	300 - 800		3.03	4.75	.63	1.75	1.75	.50	1.94	500
KA44U-2N	4	500 - 1000		3.03	4.75	.63	1.75	1.75	.50	1.94	600

\* "N" indicates NEMA standard stud holes.

▲ Listed torque values are for maximum conductor sizes accommodated. Consult UL486 Tables 7-4, 7-5, 7-6 for smaller conductor sizes.

\*\* Maximum dimension.