

CUSTOMER

PRASIMAX

**SPECIFICATION FOR APPROVAL
AC/DC ADAPTOR**

CUSTOMER SPEC: INPUT: 100-240V AC 50/60Hz OUTPUT: 5.0VDC1500mA

CUSTOMER DWG./PART NO. _____

PART NO. KSAS7R50500150HE(PAHS REACH ROHS)

SAMPLE NO: S66576

REV.: B ISSUE

DATE: 2013-08-15

Unit Color: Black



White



APPROVED SIGNATURES

APPROVED BY

CHECKED BY:

TESTED BY:

SEANEN ELECTRONICS CO., LTD

ADD: Rooms 1318-20 Hollywood Plaza 610 Nathan Road Mongkok KI HK
Tel: 852-27108200 Fax: 852-27108266

SHENZHEN SEANEN ELECTRONICS CO., LTD

ADD: 209B 4th Building, Bolun Industry Park, Zhuguang West Road,
Xili Town, Nanshan District, Shenzhen, Guangdong, China 518055
Tel: 86-755-86230375 Fax: 86-755-26940976
Email: sales@seanen.com Http://www.seanen.com

Switching Power Supply Specification

Project Modify List

<i>Item</i>	<i>Content</i>	<i>Rev.</i>	<i>Date</i>	<i>Designed By</i>	<i>Checked By</i>
1	First REV.	A	2013-07-09	Chenxian	Qinxianyong
2	Update Label	B	2013-08-15	Chenxian	Qinxianyong
3					
4					
5					
6					
7					
8					
9					
10					
11					
12					
13					
14					
15					
16					
17					
18					
19					
20					
21					
22					
23					
24					
25					
26					

TITLE:

REVISIONS:B

DRAWING NO.:

DESIGN: 陈娴

CHECK: 覃显勇

APPROVE: 宋军

DATE: 2013-08-15

PAGE: 2 OF 10

Switching Power Supply Specification

1	GENERAL.....	4
1.1	Description.....	4
2	INPUT REQUIREMENTS	4
2.1	Input Conditions	4
2.2	AC Inrush Current	4
3	OUTPUT REQUIREMENTS	4
4	MECHANICAL	5
4.1	Enclosure And Layout	5
4.2	Input and Output Configuration	5
5	REGULATORY COMPLIANCE	6
5.1	Safety Requirements and Certification	6
5.1.1	Regulatory Standard.....	6
5.1.2	Additional Safety Requirements	6
6	ENVIRONMENTAL REQUIREMENTS.....	6
6.1	Temperature	6
6.2	Humidity	6
7	APPEARANCE DRAWING: (Unit: mm).....	7
8	NAME PLATE:	8
9	DIMENSION OF OUTPUT PLUG & DC CORD (Unit: mm)	9
10	BOX DRAWING: (Unit: mm).....	10

TITLE:		REVISIONS:B	DRAWING NO.:	
DESIGN: 陈娴	CHECK: 覃显勇	APPROVE: 宋军	DATE: 2013-08-15	PAGE: 3 OF 10

Switching Power Supply Specification

1 GENERAL

1.1 Description

This specification defines the performance characteristics for a class II adapter., single-phase 7.5 watts. Single output level power supply.

- Simple design philosophy.
- Overload Latch-Off protection during either (a) specified power threshold requirements or (b) short circuit condition.
- Reliability level of 50K hours MTBF @ 25° C (rated input voltage, and using the BELLCORE SR-332 method)..
- DC output voltage must be Safe Extra Low Voltage (SELV) & Limited Power as defined by IEC60950-1.

The maximum room ambient temperature (T_{mra}), as mentioned in clause 1.4.12 of IEC 60950-1, for the external power supply is 40 °C.

- Cooling: natural convection.

2 INPUT REQUIREMENTS

2.1 Input Conditions

The Supply shall operate over the voltage ranges as follows:

Rated input voltage	100-240Vac
Operating range	90-264Vac
Rated input frequency	50/60Hz +/- 3Hz
Rated input current	0.25A max.
Maximum input power	11W
Power consumption (no loading)	Max. 0.5W
Input current (no loading)	≤18mA
Primary current protection	An adequate internal fuse on the AC input line is provide.
Configuration	<u>2</u> Conductor

2.2 AC Inrush Current

Peak inrush current shall be limited to 60 A for a cold start. Under both cold & warm start conditions, there shall be no immediate damage or long term impact on the reliability of the Supply. The conformance test for this requirement shall be performed at +12.5% of the rated input voltage. Voltage and current waveforms will be observed on an oscilloscope following closure of the external power switch. Switch closure will be repeated until the waveforms show closure coincident with a voltage peak. The current measured during this occurrence will be defined as the peak inrush current.

3 OUTPUT REQUIREMENTS

3.1	Nominal dc output voltage	+5.0V
3.2	Minimum load current	0.01A
3.3	Rating load current	1.5A

TITLE:		REVISIONS:B	DRAWING NO.:	
DESIGN: 陈娴	CHECK: 覃显勇	APPROVE: 宋军	DATE: 2013-08-15	PAGE: 4 OF 10

Switching Power Supply Specification

3.4	Peak load current	/
3.5	Rating output power	7.5W
3.6	Line regulation	The line regulation is less than <u>±5%</u> while measuring at rated load and +/-10% of input voltage changing.
3.7	Load regulation	The load regulation for +5.0V is less than <u>+/-5%</u> , at measured output load from 10% to 100% rated load .
3.8	Peak load regulation	The peak load regulation for +5.0V is less than <u>/ /</u> , at measured output load from 30% to 100% rated load.
3.9	Ripple and noise	120 mVp-p
		Add 0.1uF/50V ceramic capacitor and 10uF/50V aluminum electrolytic capacitor across the output terminal. Measured with 20MHz Bandwidth Oscilloscope.
3.10	Switching efficiency	68.13% minimum
		115V/60Hz and 230V/50Hz, output current from 100%, 75%, 50%, 25%.
3.11	Turn on delay time	3000 mS At nominal input AC voltage and full load
3.12	Rise time	The Supply shall have a start-up rise time of less than 20 mS to rise to within regulation limits for all DC outputs.
3.13	Hold up time	10 mS minimum At nominal input AC voltage and full load
3.14	Output over-shoot	Less than 10% of nominal voltage value
3.15	Temperature coefficient	Output voltage temperature coefficient ±0.05%/°C
3.16	LED indication function	/
3.17	Protection function	
	Over-voltage protection	
	Short-circuit protection	The adapter shall not damage and with auto recovery function by short the DC output to Ground.
	Over current protection	The power supply will be protection when output current is at 100-200% of all rated dc output

4 MECHANICAL

4.1 Enclosure And Layout

Plastic case: **UL94V-1**
 Weight : **70g (Max.)**
 Dimensions: **65*36*27 mm**
 Colour : **BLACK**

4.2 Input and Output Configuration

Input pin: **European PIN**
 Output connector : dc plug type: **3.5*1.35*7.0mm**
 Polarity: **center: “+”**

TITLE:		REVISIONS:B	DRAWING NO.:	
DESIGN: 陈娴	CHECK: 覃显勇	APPROVE: 宋军	DATE: 2013-08-15	PAGE: 5 OF 10

Switching Power Supply Specification

Cable: 1.5M VW-1 2468 80°C 300V 22AWG BLACK+WHITE (PAHS REACH ROHS)

5 REGULATORY COMPLIANCE

5.1 Safety Requirements and Certification

5.1.1 Regulatory Standard

The power supply shall comply with the following international regulatory standards

for short	Country	Certified Status	Standard/标准
TUV	Europe/欧洲	MEET	TUV/VDE-EN60950-1
CE	Europe/欧洲	MEET	Declared & CE Mark

5.1.2 Additional Safety Requirements

- ⊙ Dielectric Withstand Voltage, Primary(input AC short)-to-Secondary(output DC short): **3000 Vac, 5m A, 1 minute.**
- ⊙ Insulation Resistance, Input to output: **10M Ω (MIN.) at 500 VDC.**
- ⊙ Reinforced insulation system, Primary-to-Ground and Primary-to-Secondary.
- ⊙ The leakage current shall not exceed **0.25mA.**

6 ENVIRONMENTAL REQUIREMENTS

6.1 Temperature

- ⊙ Operating: **0 °C +40 °C**
- ⊙ Non-Operating: **-20 °C +80 °C**

6.2 Humidity

- ⊙ Operating: 10%~90% (Non Condensing)
- ⊙ Non-Operating: 10%~90% (Non Condensing)

TITLE:

REVISIONS:B

DRAWING NO.:

DESIGN: 陈娴

CHECK: 覃显勇

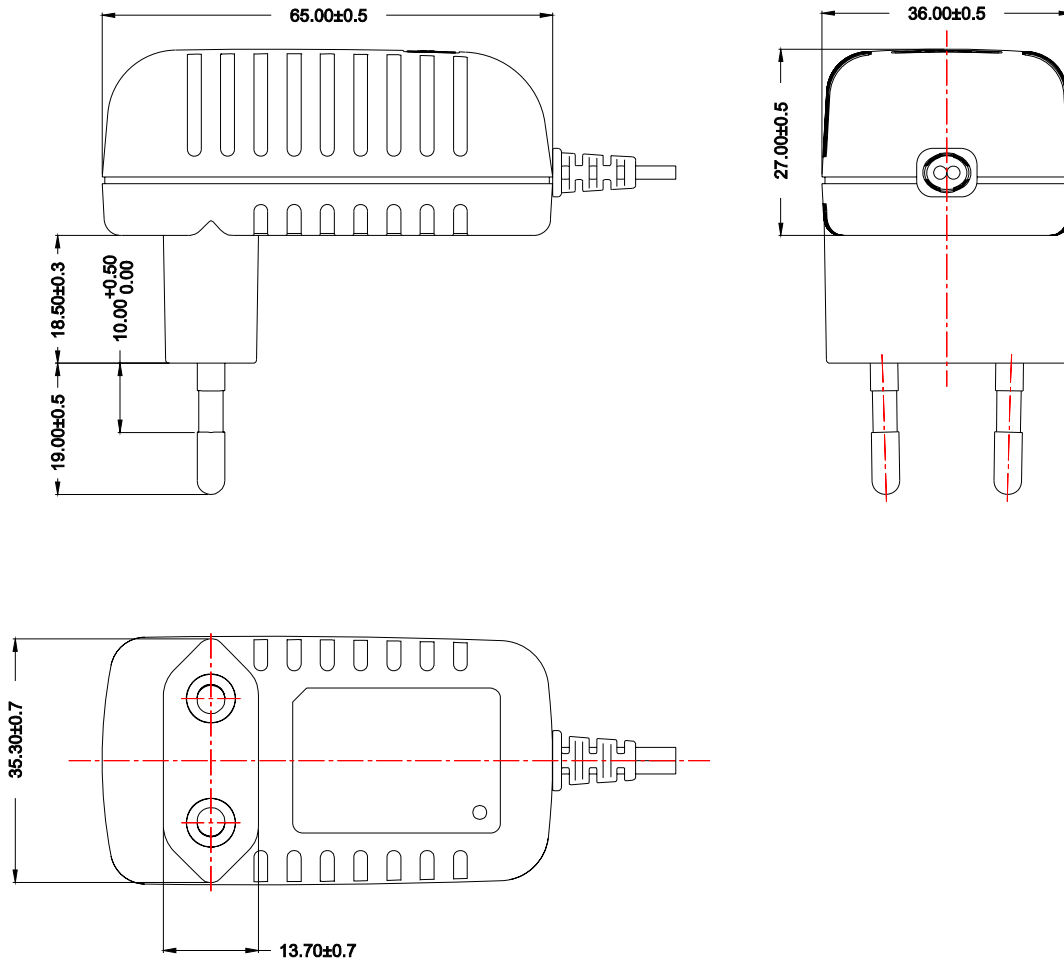
APPROVE: 宋军

DATE: 2013-08-15

PAGE: 6 OF 10

Switching Power Supply Specification

7 APPEARANCE DRAWING: (Unit: mm)

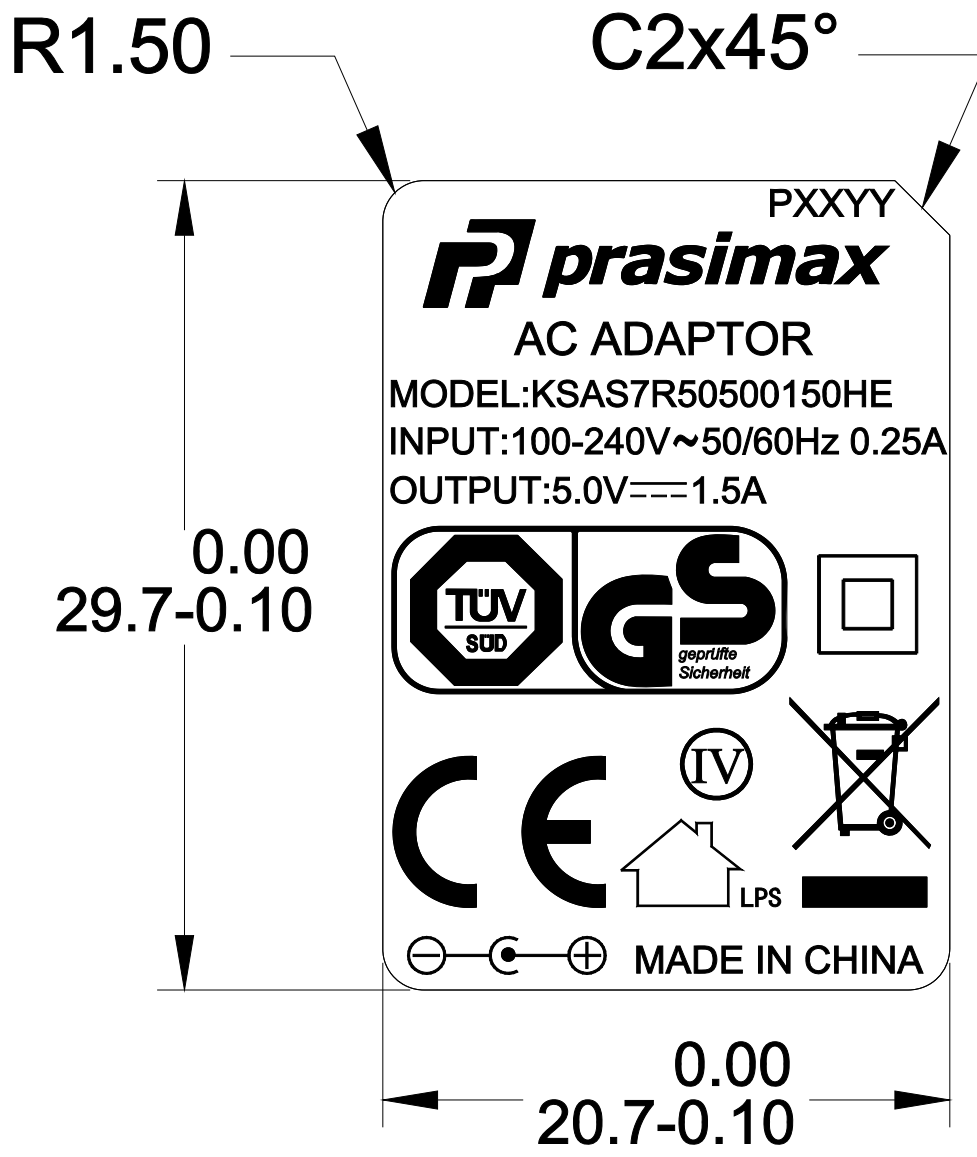


- NOTE: 1. Case cover & chassis material:
SE-1/SE-100 BLACK
2. AC PIN MATERIAL: BRASS (NI PLATED)
3. PAHS REACH ROHS

TITLE:		REVISIONS:B	DRAWING NO.:	
DESIGN: 陈娴	CHECK: 覃显勇	APPROVE: 宋军	DATE: 2013-08-15	PAGE: 7 OF 10

Switching Power Supply Specification

8 NAME PLATE:

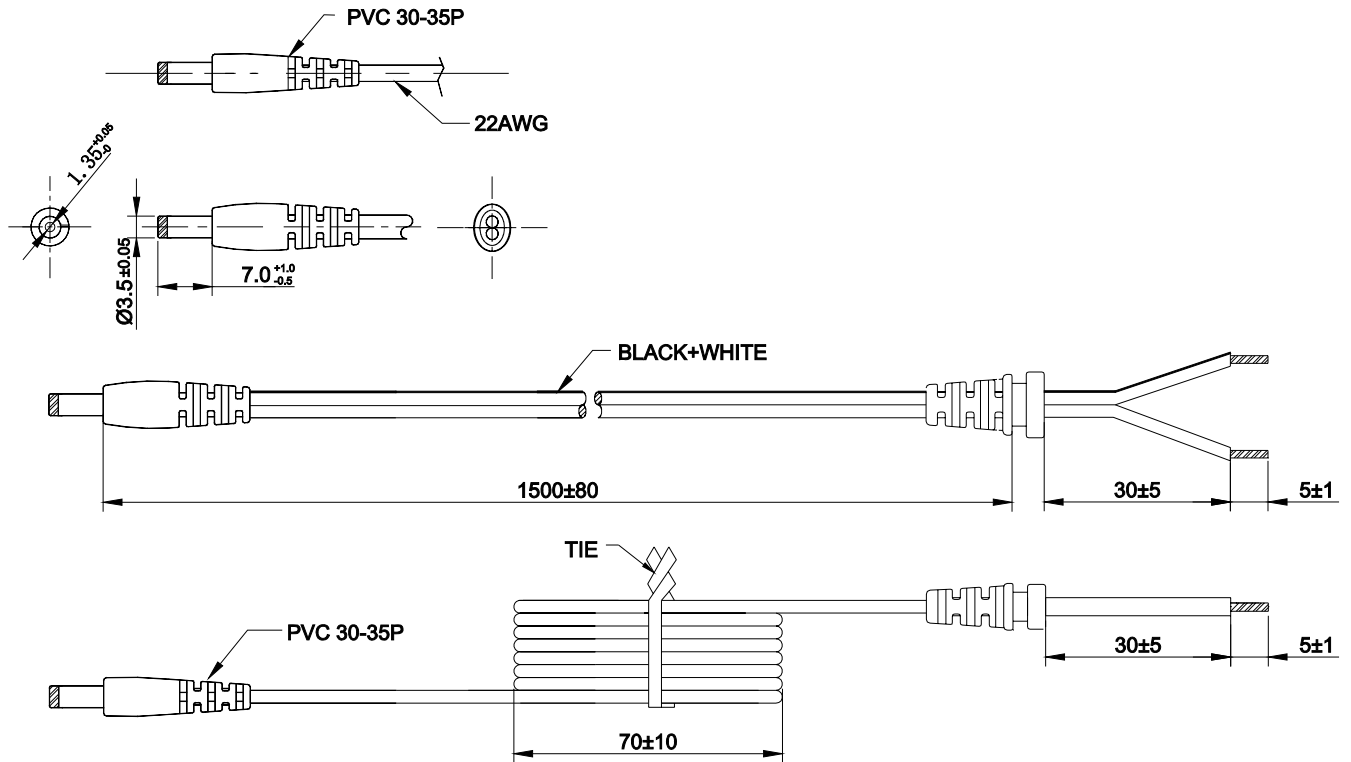


- Note: 1. MATERIAL: POLYESTER+PVC; COATING:0.25+/-0.05mm
White characters Black background
PAHS REACH ROHS
2. Laser镭射
- 3.PXXYY (P=PAHS XX=WEEK YY=YEAR) 按实际生产日期制作

TITLE:		REVISIONS:B	DRAWING NO.:	
DESIGN: 陈娴	CHECK: 覃显勇	APPROVE: 宋军	DATE: 2013-08-15	PAGE: 8 OF 10

Switching Power Supply Specification

9 DIMENSION OF OUTPUT PLUG & DC CORD (Unit: mm)



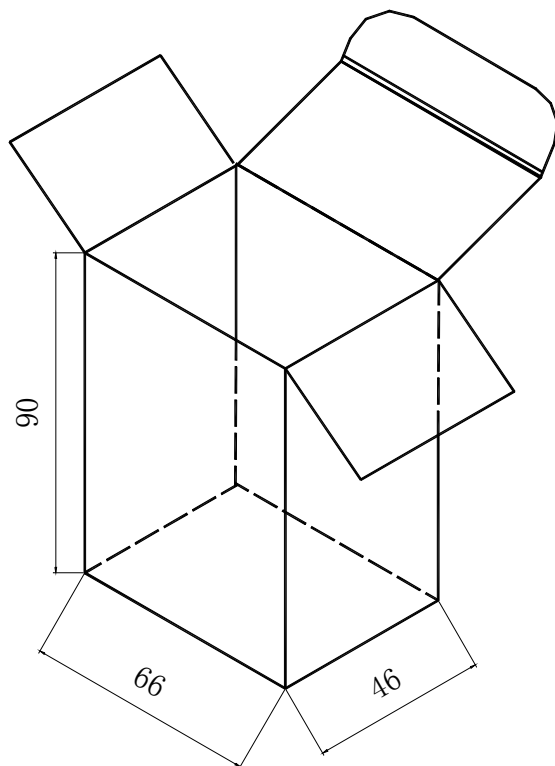
NOTE: (unit:mm)

- 1). WIRE TYPE: VW-1 80°C 300V L=1500mm 2468 22AWG 2C BLACK+WHITE
BLACK and WHITE---Positive BLACK---Negative
- 2). THE POLARITY: \ominus \bullet \oplus
- 3). PAHS REACH ROHS

TITLE:		REVISIONS:B	DRAWING NO.:	
DESIGN: 陈娴	CHECK: 覃显勇	APPROVE: 宋军	DATE: 2013-08-15	PAGE: 9 OF 10

Switching Power Supply Specification

10 BOX DRAWING: (Unit: mm)



NOTE: WHITE BOX: 66*46*90 mm
MATERIAL:400g/M²(LEAD FREE)

TITLE:		REVISIONS: B	DRAWING NO.:	
DESIGN: 陈娴	CHECK: 覃显勇	APPROVE: 宋军	DATE: 2013-08-15	PAGE: 10 OF 10