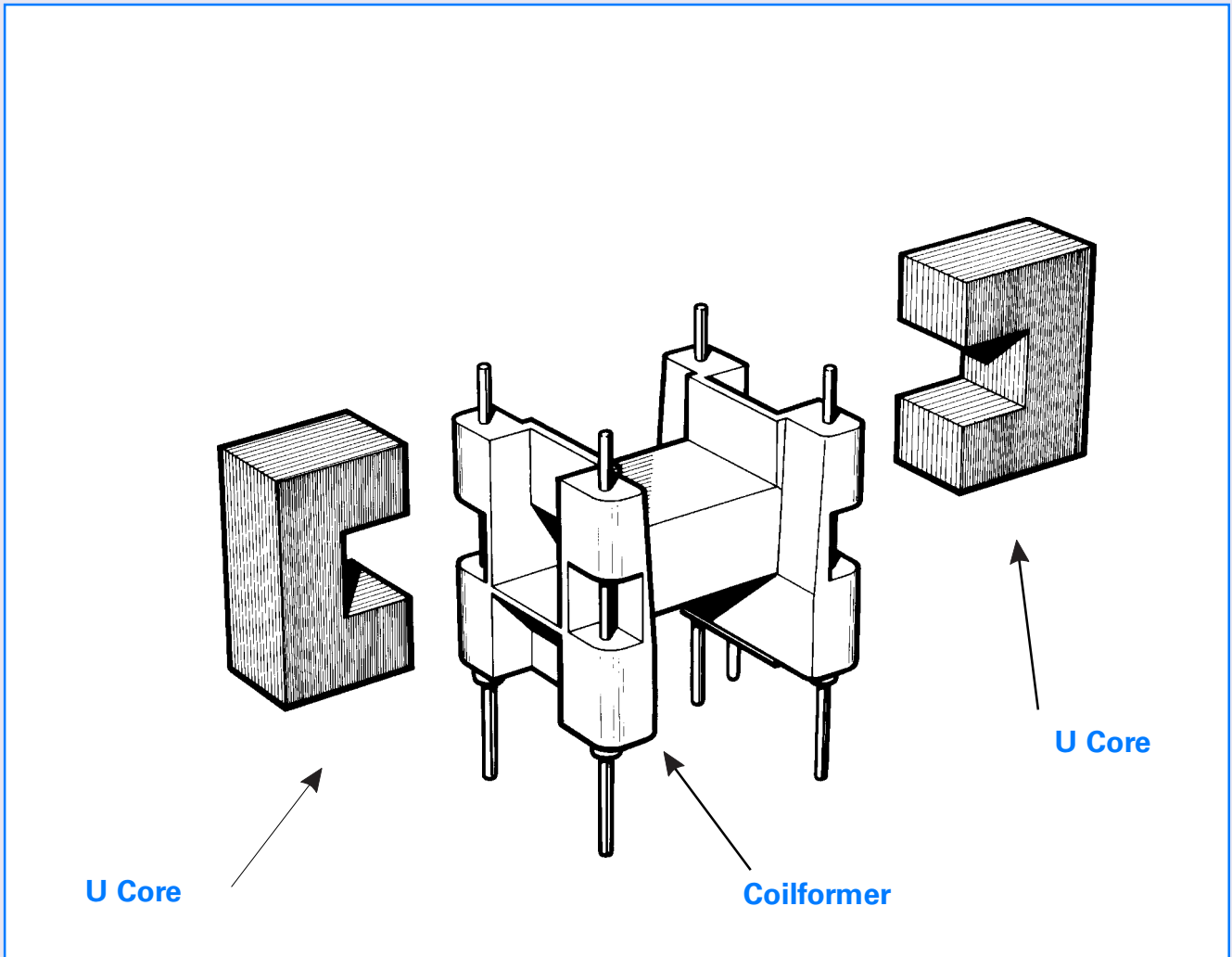


## U Series Components



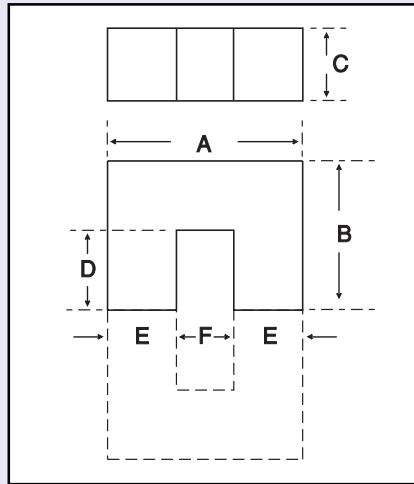
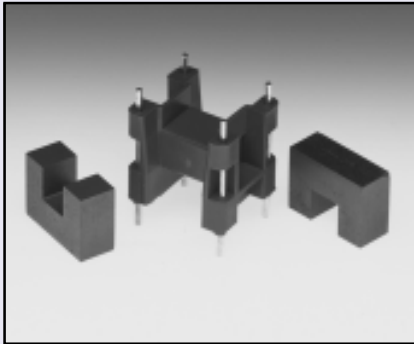
### U & I Cores

These cores are used for the construction of transformers in the frequency range from 10 to 500kHz. The transferable outputs will be determined by core geometry, and the upper frequency limits by the material selected.

Other applications are in line transformers producing an electron deflection beam for CRT's, and new areas of design are emerging in the automotive industry.

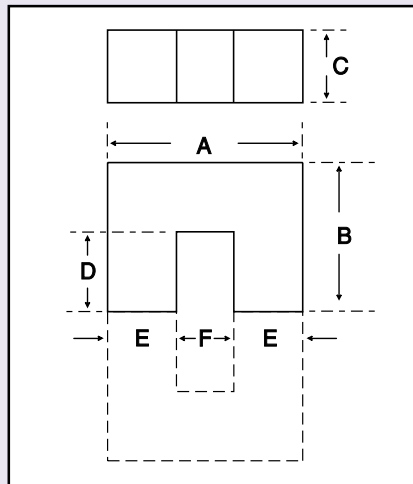
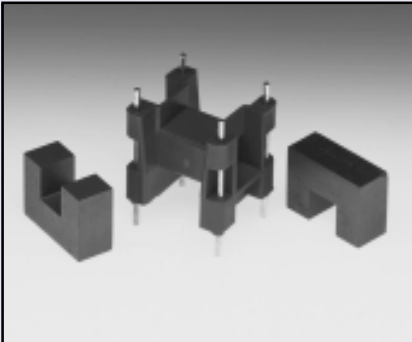
Materials used for these applications are characterised by high flux density, low specific power losses and the decline of losses dependant on temperature in the range from 20°C to 100°C.

# Square



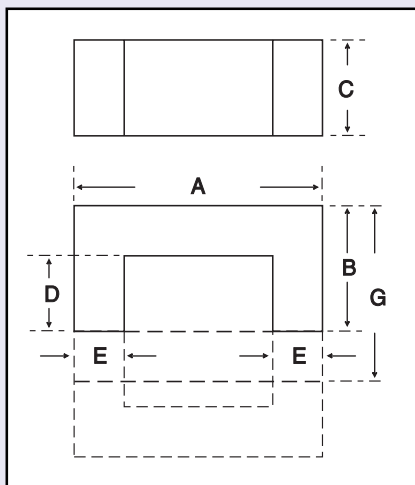
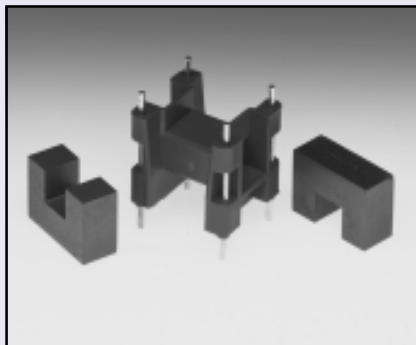
Description		U12.7		U+I 12.7	U13.5	U15		
Part No.		34-491-36	34-491-49	33/34-490-36	34-031-36	34-010-36	34-010-39	34-010-44
Material		F9	F5A	F9	F9	F9	F39	F44
Dimensions	A	12.70	12.70	12.70	13.50	15.20	15.20	15.20
	B	6.35	6.35	6.35	9.7	11.20	11.20	11.20
	C	4.95	4.95	4.95	4.80	6.45	6.45	6.45
	D	3.81	3.81	3.81	6.25	6.00	6.00	6.00
	E	2.54	2.54	2.54	3.34	5.00	5.00	5.00
	F	7.30min	7.30min	7.30min	6.50min	5.00min	5.00min	5.00min
	G	-	-	8.90	-	-	-	-
Tolerance		860	500	1000	1060	2625	5000	1120
A <sub>L</sub> Value		+30/-20%	+30/-20%	+30/-20%	±25%	+30/-20%	+40/-30%	+30/-20%
Core Parameters		In accordance with IEC Document 60205.						
C <sub>1</sub>	3.05mm <sup>-1</sup>	3.05mm <sup>-1</sup>	2.62mm <sup>-1</sup>	3.01mm <sup>-1</sup>	1.50mm <sup>-1</sup>	1.50mm <sup>-1</sup>	1.50mm <sup>-1</sup>	
l <sub>e</sub>	38.45	38.45	33.00	49.20	48.00	48.00	48.00	
A <sub>e</sub>	12.60mm <sup>2</sup>	12.60mm <sup>2</sup>	12.60mm <sup>2</sup>	16.31mm <sup>2</sup>	32.00mm <sup>2</sup>	32.00mm <sup>2</sup>	32.00mm <sup>2</sup>	
V <sub>e</sub>	484.0mm <sup>3</sup>	484.0mm <sup>3</sup>	416.0mm <sup>3</sup>	803.0mm <sup>3</sup>	1540.0mm <sup>3</sup>	1540.0mm <sup>3</sup>	1540.0mm <sup>3</sup>	

# Square



U20	U25				U31	U59	Description	
34-012-44	34-015-44	34-015-49	34-016-44	34-018-36	34-025-36	34-032S49	Part No.	
F44	F44	F5A	F44	F9	F9	F5C	Material	
21.00	24.75	24.75	24.75	24.65	31.00	59.00	Dimensions	
15.38	19.43	19.43	19.43	17.20	15.50	55.00		
7.50	12.70	12.70	7.0	7.30	16.00	15.27		
8.24	11.33	11.33	11.33	11.10	8.70	40.00		
7.40	8.30	8.30	8.30	7.23	7.00	15.00		
6.0min	8.0min	8.0min	8.0min	9.90min	16.0min	28.5min		
-	-	-	-	-	-	-		
1560	2480	2900	1240	2475	4500	2530		A <sub>L</sub> Value
+30/-20%	+30/-20%	+30/-20%	+30/-20%	+30/-20%	+30/-20%	±30%		Tolerance
Core Parameters								
1.24mm <sup>-1</sup>	3.05mm <sup>-1</sup>	2.62mm <sup>-1</sup>	3.01mm <sup>-1</sup>	1.50mm <sup>-1</sup>	1.50mm <sup>-1</sup>	1.50mm <sup>-1</sup>	C <sub>1</sub>	
68.0	86.0	86.0	86.0	87.0	90.0	187.0	I <sub>e</sub>	
54.9mm <sup>2</sup>	105.0mm <sup>2</sup>	105.0mm <sup>2</sup>	52.5mm <sup>2</sup>	54.0mm <sup>2</sup>	112.0mm <sup>2</sup>	225.0mm <sup>2</sup>	A <sub>e</sub>	
3730mm <sup>3</sup>	9030mm <sup>3</sup>	9030mm <sup>3</sup>	4515mm <sup>3</sup>	4700mm <sup>3</sup>	10079mm <sup>3</sup>	42100mm <sup>3</sup>	V <sub>e</sub>	

# Square

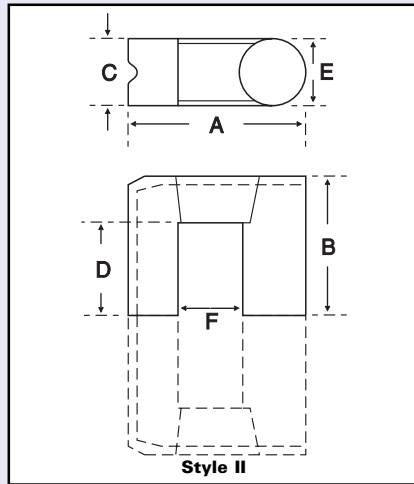
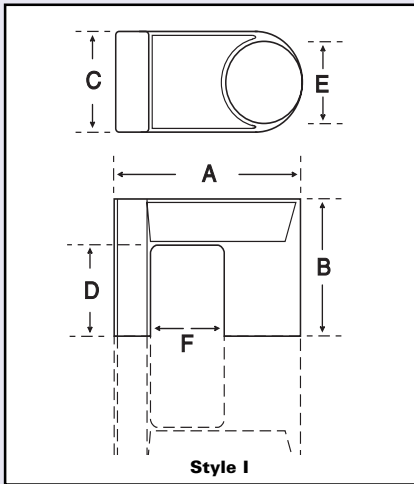


Description		U101/25.4	I101/25.4	U101/12.7		
Part No.		34-029-44	34-029-49	33-029-44	33-029-49	34-030-49
Material		F44	F5A	F44	F5A	F5A
Dimensions	A	101.6	101.6	101.6	101.6	101.6
	B	57.15	57.15	25.4	25.4	57.15
	C	25.40	25.40	25.40	25.40	12.70
	D	31.75	31.75	0.45	0.45	31.75
	E	25.40	25.40	25.40	25.40	25.40
	F	49.78	49.78	49.78	49.78	49.78
	G	25.40	25.40	25.40	25.40	25.4
A <sub>L</sub> Value		4500	5400	5625	6750	2060
Tolerance		+30/-20%	+30/-20%	+30/-20%	+30/-20%	+30/-20%

## Core Parameters

In accordance with IEC Document 60205.

C <sub>1</sub>	0.478	0.478	0.380	0.380	0.956
l <sub>e</sub>	308.40	308.40	245.00	245.00	308.40
A <sub>e</sub>	645.20	645.20	645.00	645.20	322.60
V <sub>e</sub>	198980.00	198980.00	158000.00	158000.00	99482.00



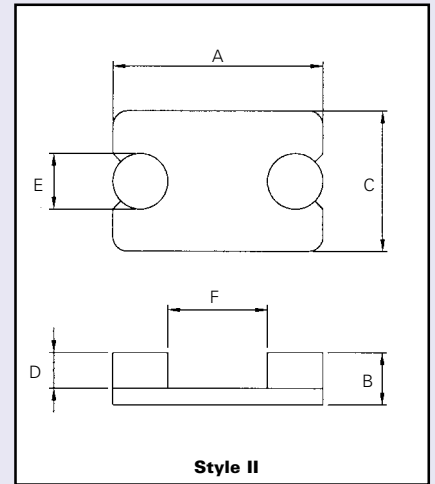
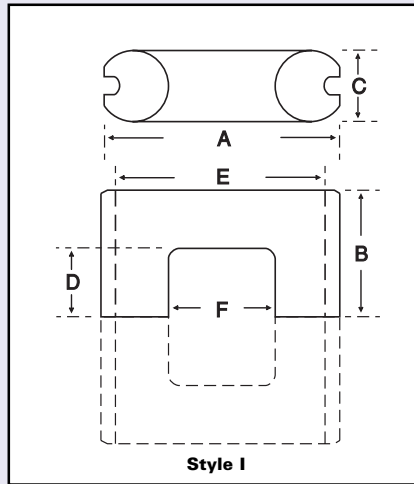
## Square/Round



<b>Description</b>	UR29/18	UR37/25	UR42/32		
<b>Style</b>	I	I	II		
<b>Part No.</b>	34-543-44	34-521-44	34-521-49	34-536-44	
<b>Material</b>	F44	F44	F5A	F44	
<b>Dimensions</b>	<b>A</b>	29.0	36.9	36.9	42.5
	<b>B</b>	17.8	28.2	28.2	31.65
	<b>C</b>	16.0	18.0	18.0	18.0
	<b>D</b>	11.7	16.5	16.5	20.9
	<b>E</b>	11.0	14.7	14.7	15.85
	<b>F</b>	11.0 MIN	13.9 MIN	13.9 MIN	16.58 MIN
	<b>G</b>	5.8	7.3	7.3	9.85
<b>A<sub>L</sub> Value</b>	2000	2200	3000	2425	
<b>Tolerance</b>	+30/-20%	+30/-20%	+30/-20%	+30/-20%	

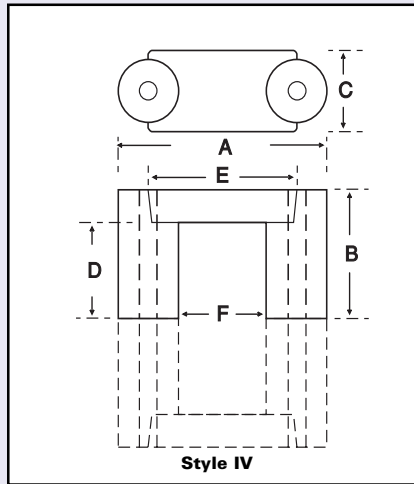
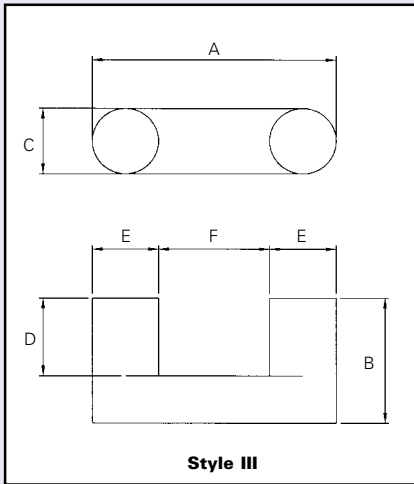
<b>Core Parameters</b>				
In accordance with IEC Document 60205.				
<b>C<sub>1</sub></b>	0.945	0.833	0.833	0.862
<b>l<sub>o</sub></b>	90.9	125.0	125.0	160.3
<b>A<sub>e</sub></b>	96.2	150.0	150.0	186.0
<b>V<sub>e</sub></b>	8744	18750	18750	29820

# Round



All dimensions are nominal unless stated.

Description		U26.5	U41		U47	U53		U58
Style		I	I	I	III	I	I	III
Part No.		34-540-49	34-548-49	34-539-49	34-533-49	34-513-49	34-514-49	34-525-44
Material		F5A	F5A	F5A	F5A	F5A	F5A	F44
Dimensions	A	26.54	41.15	41.15	47.3	52.8	52.8	58.8
	B	20.07	17.45	20.62	39.00	23.70	27.50	30.10
	C	9.40	11.70	11.70	15.25	11.30	11.30	16.50
	D	14.60	7.94	11.10	27.00	14.20	17.50	19.00
	E	20.18 MIN	34.70 MIN	34.70 MIN	15.00	46.00	46.00	15.85
	F	7.87	18.70 MIN	18.70 MIN	16.75 MIN	29.50 MIN	29.50 MIN	26.9 MIN
	G	1.14	3.18	3.18	15.00	3.40	3.40	15.85
A <sub>L</sub> Value		1790	2550	2375	2600	1500	1300	2250
Tolerance		+30/-20%	+30/-20%	+30/-20%	+30/-20%	+30/-20%	+30/-20%	+30/-20%
Core Parameters		In accordance with IEC Document 60205.						
C <sub>1</sub>		1.59	1.05	1.18	1.03	1.58	1.74	0.918
i <sub>o</sub>		95.40	103.00	116.00	184.00	146.00	162.00	174.00
A <sub>e</sub>		60.00	98.00	98.10	177.70	93.00	93.00	189.60
V <sub>e</sub>		5724.00	10094.00	11300.00	32700.00	13650.00	15100.00	32990.00



# Round



U59		U70		U81		U30/75		U42/10.5		U60		Description		
III		III		I		I		II		II		IV		Style
34-517-44		34-517-49		34-515-44		34-537-49		34-546-44		34-551-44		34-520-49		Part No.
F44		F5A		F44		F5A		F44		F44		F5A		Material
59.20		59.20		69.80		80.80		30.00		42.00		60.50		A
34.46		34.46		29.70		44.53		7.60		10.50		35.80		B
16.30		16.30		16.00		15.00		20.00		28.00		23.00		C
27.05		27.05		15.90		30.55		5.0		7.0		26.50		D
15.50		15.50		59.20 MIN		77.00		8.00		11.00		43.75		E
26.90 MIN		26.90 MIN		37.2 MIN		50.8 MIN		13.70 MIN		19.70 MIN		26.75		F
15.90		15.90		4.80		3.56		-		-		17.0		G
2240		2690		2220		1810		1000		1850		1730		A <sub>L</sub> Value
+30/-20%		+30/-20%		+30/-20%		+30/-20%		+30/-20%		+30/-20%		+30/-20%		Tolerance

Dimensions

## Core Parameters

0.935		0.935		1.02		1.52		1.28		0.845		0.90		C <sub>1</sub>
164.0		164.0		184.0		268.5		64.49		89.2		189.0		e
179.0		179.0		181.0		177.2		50.11		105.6		210.0		A <sub>e</sub>
33650.00		33650.00		33300.00		47600.00		3230.00		9420.00		39700.00		V <sub>e</sub>

