

FEATURES

- ✘ Compact-sized 1.9x4.5mm
- ✘ Side actuated
- ✘ Sealed with dust proof structure

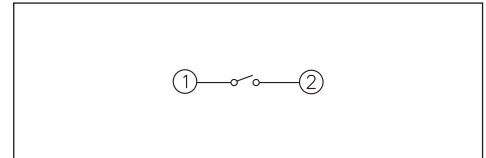
APPLICATION

- ✘ Smart phone
- ✘ Digital camera, Medical
- ✘ Portable electronic device

SPECIFICATION

Contact Rating	50mA, 12V DC
Contact Resistance	100mΩ max.
Insulation Resistance	100MΩ min. 100V DC
Dielectric Strength	250V AC/1 minute
Operating Force	180±50gf
Travel	0.20mm
Operating Life	100,000 cycles
Operating Temp.	-30°C ~ +80°C
Storage Temp.	-40°C ~ +90°C

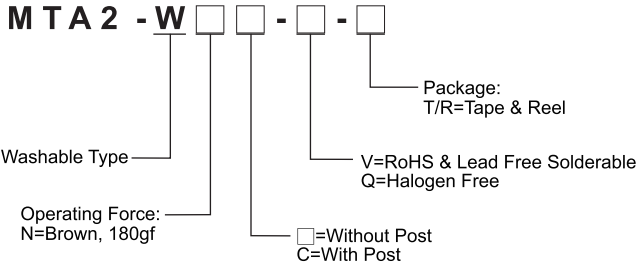
CIRCUIT



PACKAGE

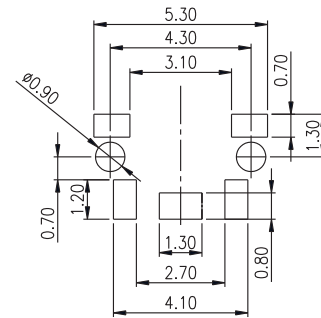
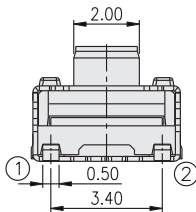
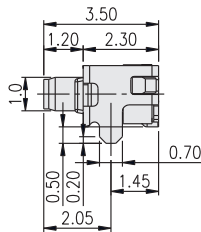
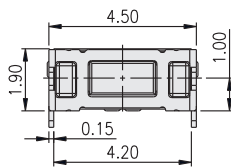
<Tape & Reel>
3000 pcs

HOW TO ORDER



TACT SWITCH

MTA2



P.C.B. LAYOUT