

REV BT

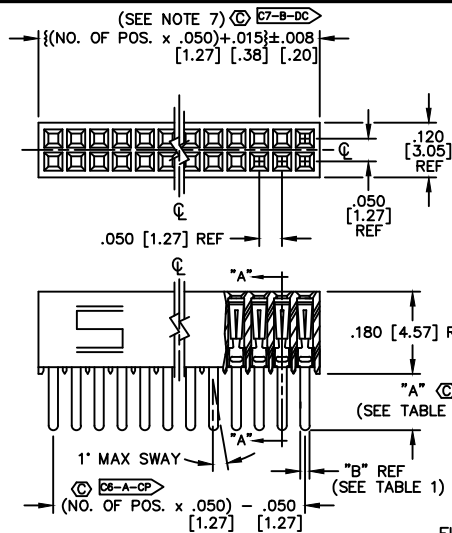


FIG 1  
 -X1: THROUGH HOLE  
 SECT. "A"-"A"

TABLE 1

SUFFIX	TAIL LENGTH "A"	TAIL WIDTH "B"
-X1	.120 [3.05]	.020 [.51]
-X3	.075 [1.91]	.016 [.41]

DIMENSIONS ARE IN INCHES UNLESS OTHERWISE NOTED TOLERANCES ARE:

ONE PLACE DECIMALS $\pm .1$ [3]	THREE PLACE DECIMALS $\pm .005$ [.13]	ANGLES $\pm 2^\circ$
TWO PLACE DECIMALS $\pm .01$ [.3]	FOUR PLACE DECIMALS $\pm .0020$ [.051]	

TITLE: .050 X .050 CUTTABLE SOCKET STRIP DOUBLE ROW ASSEMBLY  
 DWG NO: SFMC-1XX-XX-XX-D-XX  
 SHEET 1 OF 2

SFMC-1XX-XX-XX-D-XX

- NO. OF POSITIONS  
 ALL POSITIONS AVAILABLE  
 -02 THRU -50  
 USE BODY: (SFMC-50-D)
- LEAD STYLE --
- 01: THROUGH HOLE (SEE FIGURE 1)  
 USE CONTACT: (C-44-01-XX)  
 USE CONTACT: (C-44-02-XX)
  - 02: SURFACE MOUNT (SEE FIGURE 2)  
 USE CONTACT: (C-44-03-XX)
  - 03: STRAIGHT MODIFIED (SEE FIGURE 1)  
 USE CONTACT: (C-44-03-XX)
  - L1: THROUGH HOLE (LOW INSERTION) (SEE FIGURE 1)  
 USE CONTACT: (C-61-01-XX)
  - L2: SURFACE MOUNT (LOW INSERTION) (SEE FIGURE 2)  
 USE CONTACT: (C-61-02-XX)
  - L3: STRAIGHT MODIFIED (LOW INSERTION) (SEE FIGURE 1)  
 USE CONTACT: (C-61-03-XX)
  - T1: THROUGH HOLE (PHOS BRONZE) (SEE FIGURE 1)  
 USE CONTACT: (C-119-01-XX)
  - T2: SURFACE MOUNT (PHOS BRONZE) (SEE FIGURE 2)  
 USE CONTACT: (C-119-02-XX)

- OPTIONS  
 (LEAVE BLANK FOR STANDARD)  
 -P: PEEK AND PLAC PAD (SEE FIGURE 3, SHT 2)  
 USE PFP-02 (5 POSITIONS MINIMUM)  
 -TR: TAPE & REEL (SEE FIG 4, SHT 2)  
 -K: POLYIMIDE FILM PAD (.005 [1.3] THICKNESS WITH SILICONE ADHESIVE) (SEE FIG 4) (USE K-500-300) (4 POS MIN)
- BODY SPECIFICATION  
 -D: DOUBLE ROW
- PLATING SPECIFICATION  
 -S: 30μ SELECTIVE GOLD IN CONTACT AREA, MATTE TIN ON TAIL  
 -F: 3μ SELECTIVE GOLD IN CONTACT AREA, MATTE TIN ON TAIL  
 -H: 30μ GOLD IN CONTACT AREA, 3μ GOLD ON TAIL (ONLY AVAILABLE ON -02, -L2, & -T2 LEAD STYLES)  
 -FM: 3μ SELECTIVE GOLD IN CONTACT AREA, MATTE TIN ON TAIL  
 -SM: 30μ SELECTIVE GOLD IN CONTACT AREA, MATTE TIN ON TAIL  
 -L: 10μ SELECTIVE GOLD IN CONTACT AREA, MATTE TIN ON TAIL

CRITICAL DIMENSION INSPECTION TABLE

ASSEMBLY OPERATION	IN-PROCESS INSPECTION
-X1, -X3 FILL CONTACT	C2, C6
-X2 FILL CONTACT	C4, C8
CUT TO POSITION	C7
ASSEMBLY KAPTON	C8
-X2 REPRESS	C3

TABLE 2 (SEE NOTE 6)

LEAD STYLE & OPTION	PACKAGING TUBE	PLUS
-X1, -X3, -X3-K	PT-1-24-15-08	TP-24-02
-02	PT-1-24-14-08	TP-24-02
-X2-K	PT-1-24-14-08	TP-24-02
-X2-P	PT-1-24-01-38	TP-24
-X1-P	PT-1-24-15-08	TP-24-02
-X1-P, -X3-P	PT-1-24-01-08	TP-24

- NOTES:
- MIN. PUSHOUT FORCE: 5 lb.
  - COPLANARITY: .004 [10] = POS 02 THRU 24  
 .006 [15] = POS 27 THRU 50
  - REPRESENTS CRITICAL DIMENSION.
  - USE SFMC-50-D BODY.
  - NOTE DELETED.
  - PACKAGE ONLY POSITIONS -04 THRU -03 IN TUBES; LAYER PACKAGE POSITIONS -02 THRU -03.
  - CUT FLASH TO BE .010 MAX WITH NO FLASH EXTENDING BELOW LEADS OR IN HOLES OF BODY.
  - MAX HEIGHT VARIATION BETWEEN ANY TWO PINS TO BE .003 [08].
  - PINS CAN BE ORIENTED IN ANY DIRECTION; BOTH ROWS MUST FACE SAME WAY.

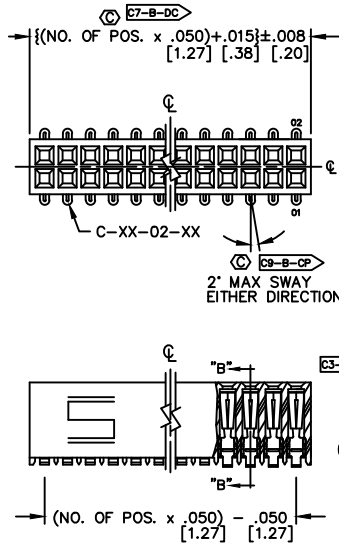
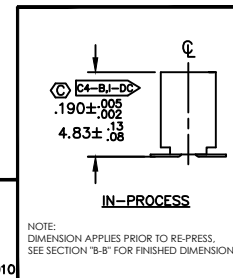
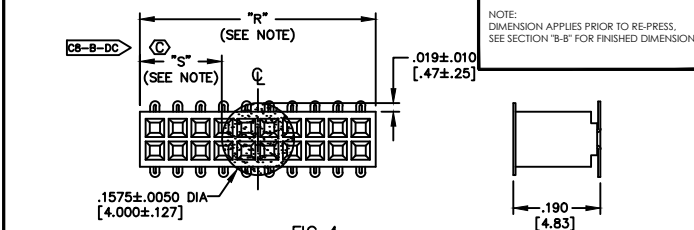


FIG 2  
 -X2: SURFACE MOUNT  
 DIFFERENT AS SHOWN,  
 OTHERWISE SAME AS FIG. 1.



MATERIAL:  
 BODY:  
 LCP, UL 94 VO  
 COLOR: BLACK

CONTACTS:  
 C-44 & C-61:  
 #25 BeCu, 1/2 HARD  
 AGE HARDENED  
 C-119:  
 PHOS BRONZE 521

MISC/MKTG  
 SFMC-1XX-XX-XX-D-XX-MK11

**samtec**  
 PHONE (812) 944-6733 P.O. BOX 1147  
 CODE 55322

MADE BY:  
 BRATCHER 10-5-94

SFMC-1XX-XX-XX-D-XX  
 SHEET 1 OF 2

PROPRIETARY NOTE  
 THIS DOCUMENT CONTAINS INFORMATION CONFIDENTIAL AND PROPRIETARY TO SAMTEC INC. AND SHALL NOT BE REPRODUCED OR TRANSMITTED IN ANY FORM OR BY ANY MEANS, ELECTRONIC OR MECHANICAL, INCLUDING PHOTOCOPYING, RECORDING, OR BY ANY INFORMATION STORAGE AND RETRIEVAL SYSTEM, WITHOUT THE WRITTEN CONSENT OF SAMTEC INC.