

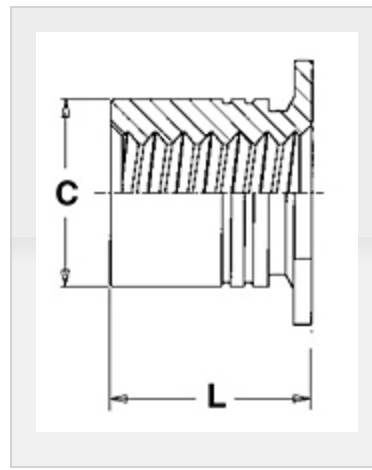
This website stores cookies on your computer. These cookies are used to collect information about how you interact with our website and allow us to remember you. We use this information in order to improve and customize your browsing experience and for analytics and metrics about our visitors both on this website and other media. To find out more about the cookies we use, see our Privacy Policy.

If you decline, your information won't be tracked when you visit this website. A single cookie will be used in your browser to remember your preference not to be tracked.

These standoffs, which use the proven self-clinching design, install with a squeeze in properly sized round holes - and become permanently mounted in the thin sheet.

Types TSO, TSOS, and TSOA self-clinching threaded standoffs provide permanent threads in sheets as thin as .025".

If you require a standoff which we do not offer in this bulletin, please contact us. We will be happy to work with you to satisfy your special need.



Specifications

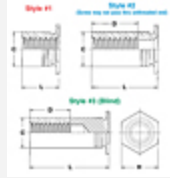
Thread Size	.112-40 (#4-40)
Thread Code	440
Length Code	250
Material Code	S
Style	#1
Min. Sheet Thickness	.025 in

**Hole Size in Sheet + .003 -
.000**

.166 in

C + .000 - .005

.165 in



H Nom.

.187 in

L - Length ± .003⁽¹⁾

.250 in

Min. Dist. Hole C/L to Edge

.23 in

For Use in Sheet Hardness⁽²⁾

HRB 70 / HB 125 or Less

Thread Specification

Internal, ANSI B1.1, 2B

Fastener Material

300 Series Stainless Steel

Standard Finish

Passivated and/or tested per ASTM A380

¹ Available in other lengths on special order.

² HRB - Hardness Rockwell "B" Scale. HB - Hardness Brinell.