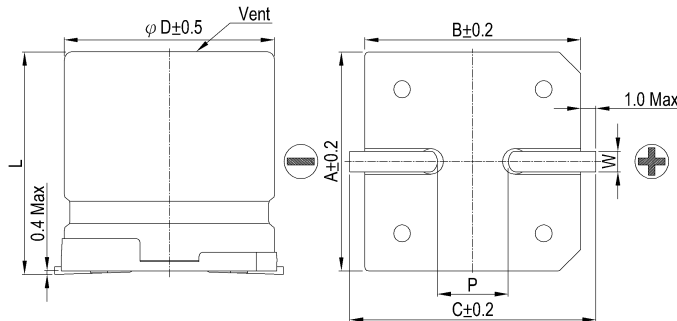


CUSTOMER :

CUSTOMER P/N:

DIAGRAM OF DIMENSIONS



Unit: mm

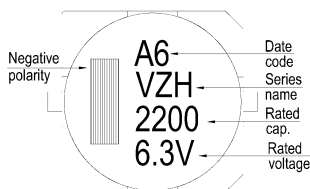
ϕ D	12.5
L	13.5 \pm 0.5
A	13.0
B	13.0
C	13.7
W	1.1 ~ 1.4
P	4.4 \pm 0.2

Items	Performance
Category Temperature Range	-55 $^{\circ}$ C ~ +105 $^{\circ}$ C
Capacitance Tolerance	-20 % ~ +20 % (120 Hz, 20 $^{\circ}$ C)
Surge Voltage	40.3 VDC
Leakage Current	$I \leq 238 \mu$ A After 2 minutes
Dissipation Factor (Tan δ)	≤ 0.13 (120 Hz, 20 $^{\circ}$ C)
Impedance	$< 0.07 \Omega$ (100kHz, 20 $^{\circ}$ C)
Ripple Current (rms)	880 mA (100kHz, 105 $^{\circ}$ C)
Low Temperature Characteristics(120 Hz)	Z(-25 $^{\circ}$ C)/Z(+20 $^{\circ}$ C) 2
	Z(-55 $^{\circ}$ C)/Z(+20 $^{\circ}$ C) 3
Ripple Current & Frequency Multipliers	Frequency (Hz) 50, 60 120 1k 10k up
	Multiplier 0.60 0.70 0.85 1.00
Life Test: Endurance: After 5000 Hrs at 105 $^{\circ}$ C Shelf Life Test: After 1000 Hrs at 105 $^{\circ}$ C	Capacitance Change Within \pm 30 % of initial value
	Dissipation factor Less than 300% of specified value
	Leakage Current Within specified value
Standards	JIS C 5101-1, -18
Remarks	RoHS Compliance & Halogen-free

Marking: Each capacitor shall be marked with the following information.

A 5 \rightarrow January , 2015

\rightarrow The last digit of A. D.
 \rightarrow Month of manufacture



Month	1	2	3	4	5	6
Code	A	B	C	D	E	F
Month	7	8	9	10	11	12
Code	G	H	I	J	K	L

Marking color: Black

* Please refer to " Precautions and Guidelines for Aluminum Electrolytic Capacitors " of Lelon's catalog.

Publish Date	August 10, 2016	Approval Signatures:	Approved	Checked	Designed
Revise Date					
Edition No.	1		Please return one copy with your approval		